

# **To Create and Find a Favourite in Internet Explorer (I.E.)**

**Ministry of Health and Long-Term Care**

Version 1.0  
November 2012

\* **NOTE:** This document is to assist users create and correct a favourite in their web browser for the GO Secure Login screen to access the Medical Claims Electronic Data Transfer service.

## Download and install Internet Explorer (I.E.) onto your computer

Download the latest version of I.E. for your Windows operating system from the Microsoft URL:

<http://windows.microsoft.com/en-US/internet-explorer/download-ie>

Open your I.E. web browser.

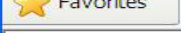
Type in the URL for GO Secure in the address field <https://www.edt.health.gov.on.ca>, and press the “Enter” key.




The URL is changed to reflect the current session

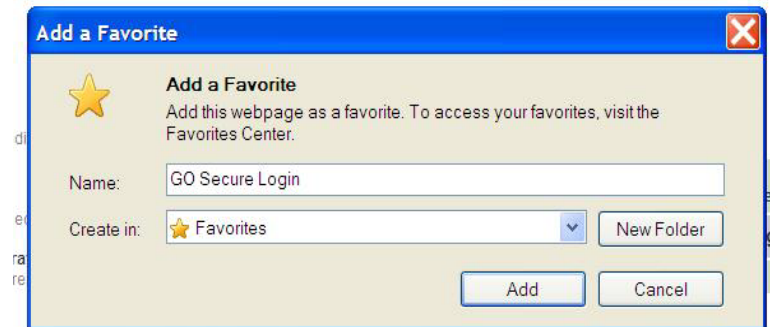


## To create a favourite in Internet Explorer (I.E.)

To create a favourite for the GO Secure Login page, left-click on  on the menu bar. A drop down menu will be displayed.




Left-click on the  on the menu bar and the following pop up screen will be displayed.

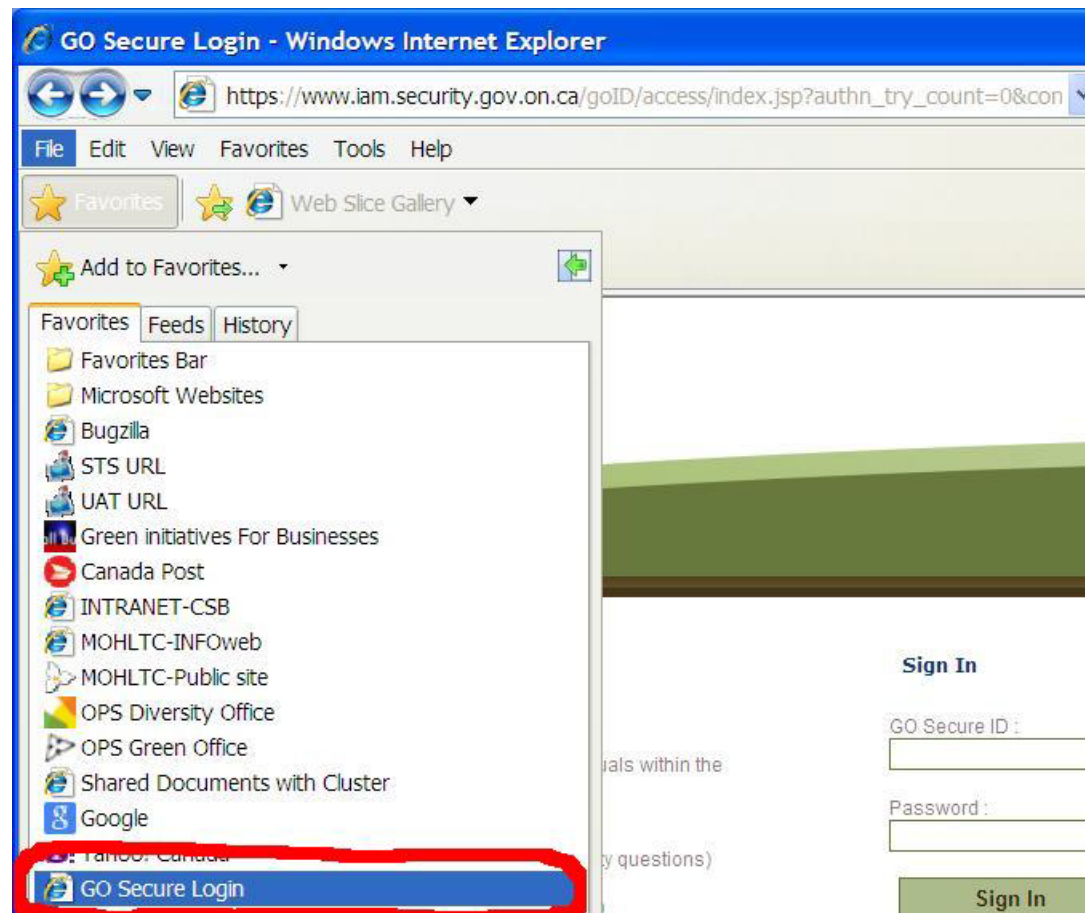


Left-click on the “Add” button, and GO Secure Login is now saved as a favourite.

To Create and Find a Favourite in Internet Explorer (I.E.)

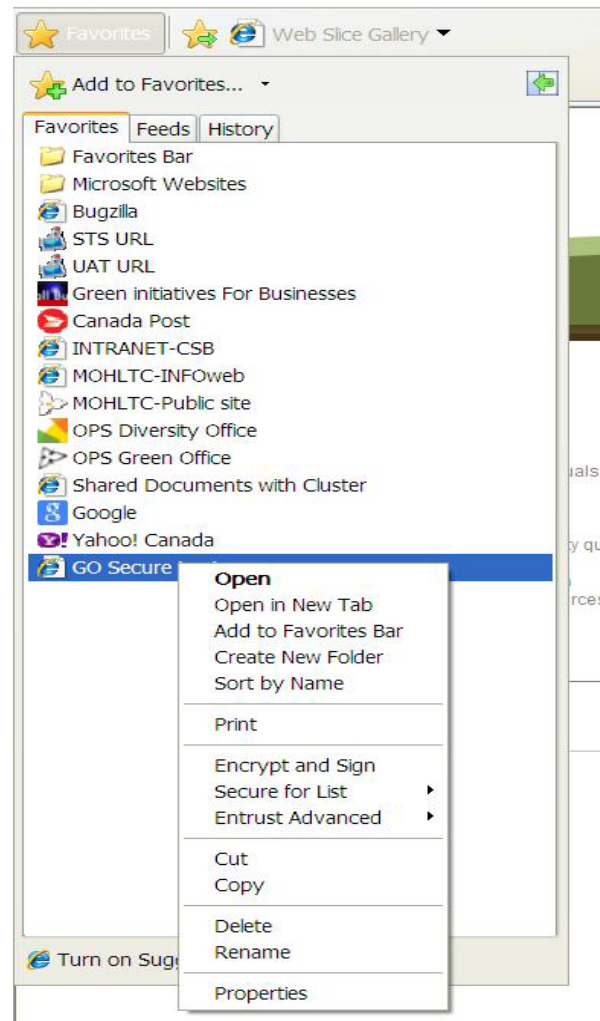
---

Left-click on  on the menu bar and a drop down menu will be displayed.  
You will see “GO Secure Login” is saved as a favourite.



## To change the favourite to the correct URL

Right-click on the favourite “GO Secure Login” and a drop down menu is displayed

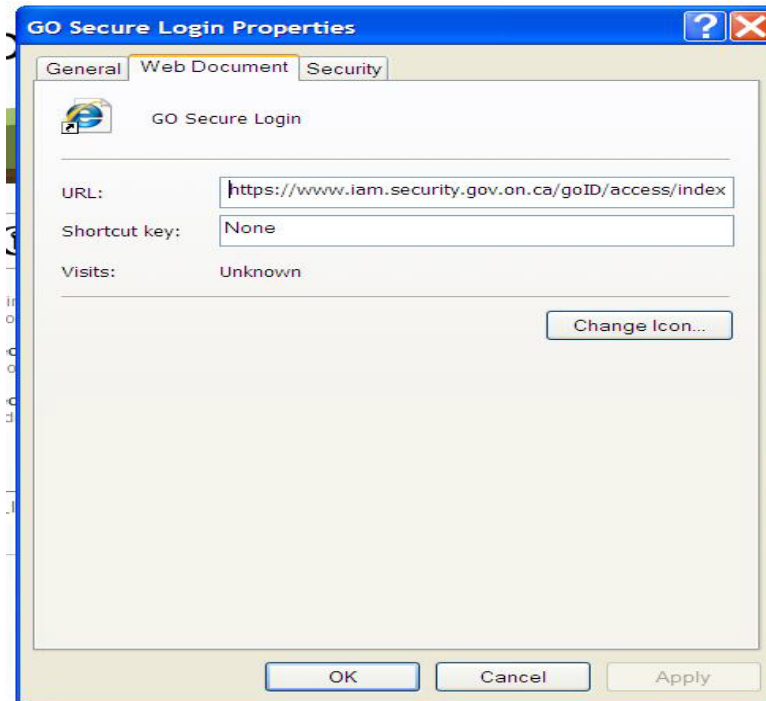


To Create and Find a Favourite in Internet Explorer (I.E.)

---

Left-click on “Properties”

The following pop up screen is displayed



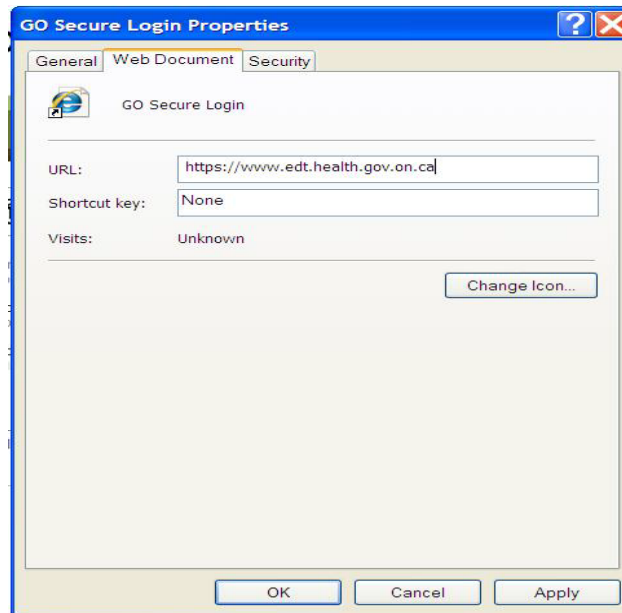
In the URL field there is text that applies to the current internet session.

This URL may result in an “Oracle Error” screen the next time you attempt to use it.

To Create and Find a Favourite in Internet Explorer (I.E.)

---

Delete the displayed text and replace with: <https://www.edt.health.gov.on.ca>



Left-click on the "Apply" button, then left-click on the "OK" button.



**Logout and close your browser.**

Reopen your browser and right-click on “GO Secure Login” to be navigated to the GO Secure Login screen to access the Medical Claims Electronic Data Transfer service.

