

## WEEKLY EPIDEMIOLOGICAL SUMMARY

# COVID-19 in Ontario: Focus on May 15, 2022 to May 21, 2022

---

Due to changes in the Ministry of Health's [updated guidance on testing and case, contact and outbreak management](#), case counts in this report are an underestimate of the true number of individuals with COVID-19 in Ontario. In addition, data for hospitalizations, intensive care unit (ICU) admission and deaths in the most recent reporting period should be interpreted with caution due to data entry and reporting lags.

---

## Introduction

This report includes the most current information available from CCM as of **May 24, 2022**.

Please visit the interactive [Ontario COVID-19 Data Tool](#) to explore recent COVID-19 data by public health unit, age group, sex, and trends over time.

A [daily summary](#) is available and provides an epidemiologic summary of recent COVID-19 activity in Ontario. This weekly report provides an epidemiologic summary of COVID-19 activity in Ontario over time.

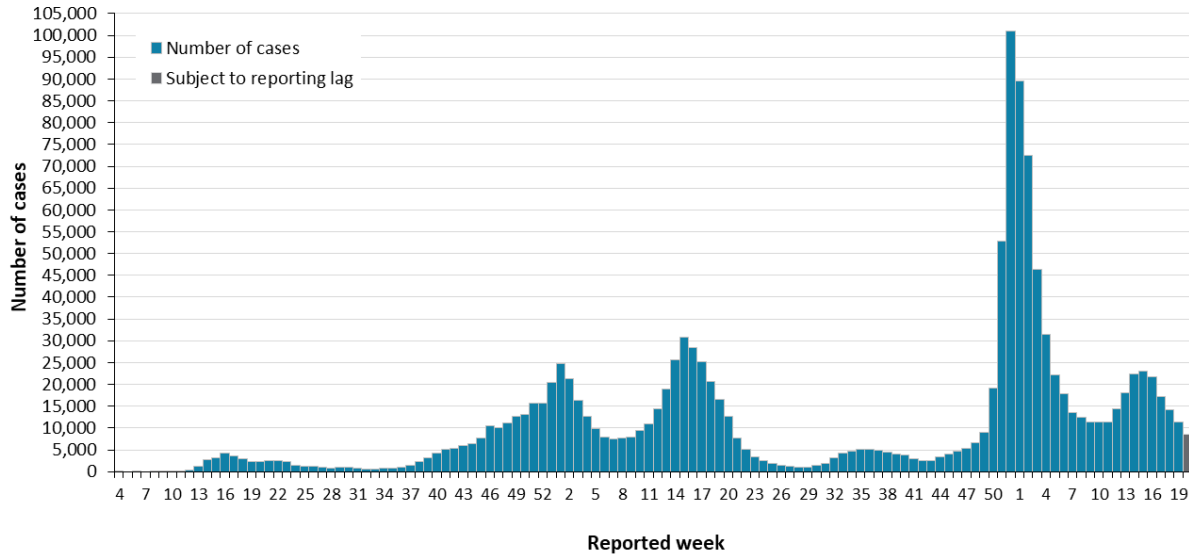
The term public health unit reported date in this document refers to the date local public health units were first notified of the case. Data corrections or updates can result in case records being removed and or updated from past reports. Thus comparisons of case counts by public health unit reported date may not align with daily change in cases publicly reported by the province for the same time period, which reflects the difference in cumulative counts between one day and the next.

## Highlights

- There are a total of 1,296,007 confirmed cases of COVID-19 in Ontario with a public health unit reported date up to May 21, 2022.
- For the period with a public health unit (PHU) reported date between May 15 to 21, 2022 (Week 20):
  - A total of 8,496 cases were reported to public health compared to 11,270 cases the previous week (May 8 to 14, 2022 or Week 19). The number of cases should be interpreted with caution due to changes in testing availability.
  - Case rates decreased across all health regions this week. While the North West region reported a decrease in case rate this week (from 214.3 to 171.2 per 100,000 population), this region continues to report the highest rate of cases.
  - The total number of outbreaks in congregate care and congregate living settings decreased this week (79) compared to last week (140, May 8 to 14, 2022). The number of outbreak associated cases also decreased across settings except correctional facilities, which saw a more than doubling of cases this week (37, up from 17 last week).

# Cases Over Time

**Figure 1. Confirmed cases of COVID-19 by public health unit reported week: Ontario**



**Note:** Include cases with reported dates ranging from week-4 (January 19 and 25, 2020) to Week 20 (May 15 and 21, 2022). See [Table 1A](#) in Appendix A for a list of the weeks and corresponding start and end dates. Changes in testing eligibility went into effect on December 31, 2021, limiting access to testing and resulting in a change in the population being tested.

**Data Source:** CCM

## Case Characteristics

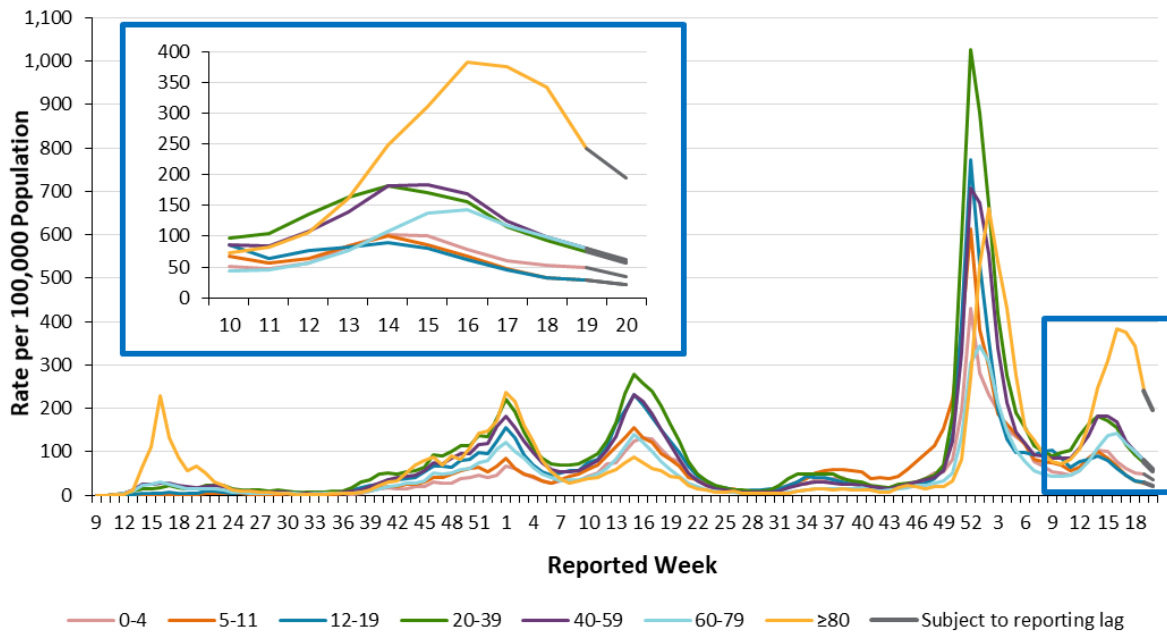
**Table 1. Summary of confirmed cases of COVID-19 by public health unit reported date: Ontario**

	Reported Week 19 (May 8 to 14, 2022)	Reported Week 20 (May 15 to 21, 2022)	Cumulative case count up to May 21, 2022	Cumulative rate per 100,000 population
Total number of cases	11,270	8,496	1,296,007	8,796.0
Sex: Male	4,351	3,260	601,544	8,263.6
Sex: Female	6,844	5,152	686,608	9,210.6
Ages: 0-4	351	251	38,531	5,329.2
Ages: 5-11	310	225	74,423	6,900.4
Ages: 12-19	393	283	105,324	7,922.2
Ages: 20-39	3,136	2,321	486,644	11,721.0
Ages: 40-59	3,165	2,409	362,813	9,313.6
Ages: 60-79	2,322	1,719	162,996	5,621.0
Ages: 80 and over	1,588	1,283	64,862	9,890.0
Number resolved	N/A	N/A	1,271,259	N/A

**Note:** Not all cases have an age or sex reported. Interpret information for the most recent week with caution due to reporting lags.

**Data Source:** CCM

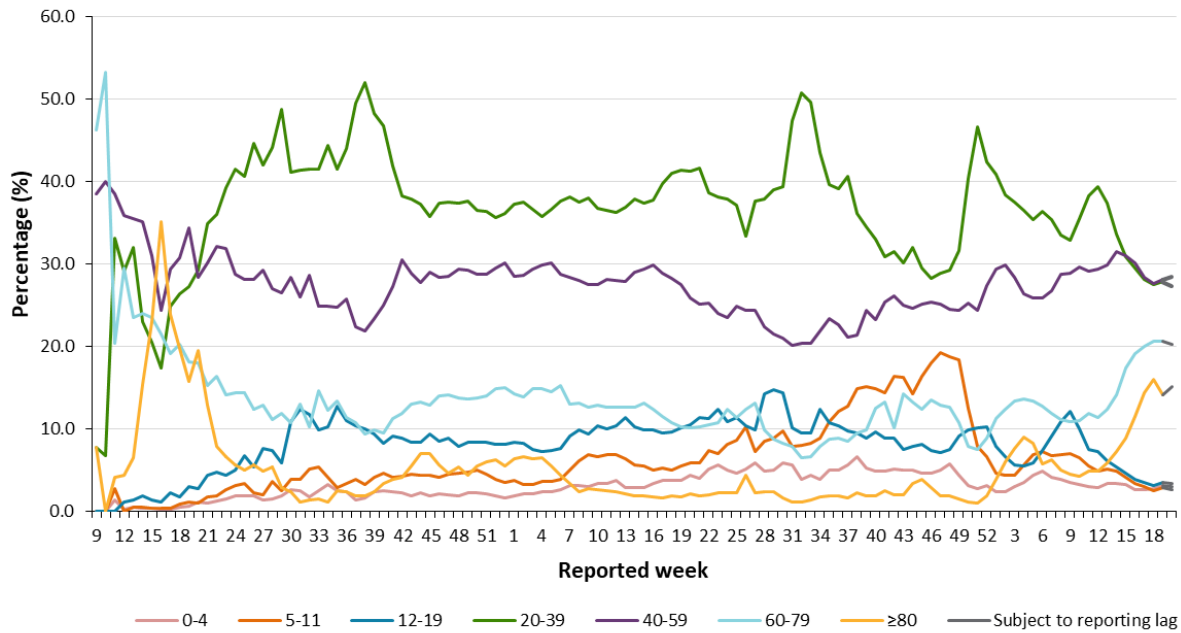
**Figure 2a. Rate of confirmed cases of COVID-19 per 100,000 population by age group and public health unit reported week: Ontario**



**Note:** Not all cases have an age reported. Only weeks with more than 10 cases by public health unit reporting date are included (starting in week 9). Include cases with reported dates ranging from week 9 (February 23 and 29, 2020) to Week 20 (May 15 and 21, 2022). See [Table 1A](#) in Appendix A for a list of the weeks and corresponding start and end dates.

**Data Source:** CCM

**Figure 2b. Percentage of confirmed cases of COVID-19 by age group and public health unit reported week: Ontario**

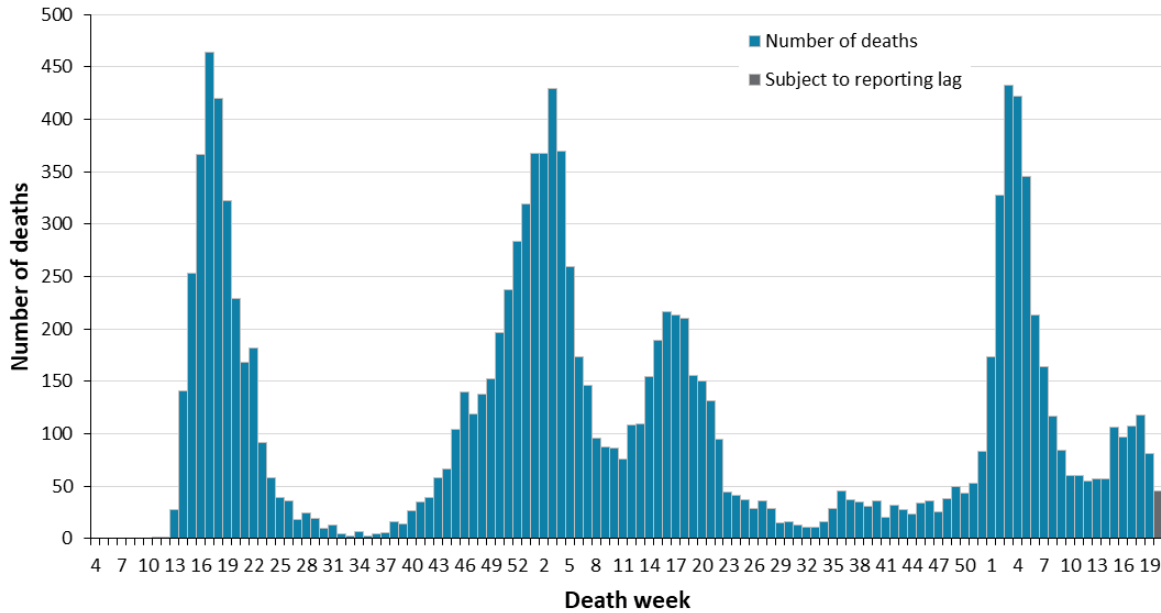


**Note:** Only weeks with more than 10 cases by public health unit reporting date are included (starting in week-9). Include cases with reported dates ranging from week-9 (February 23 and 29, 2020) to Week 20 (May 15 and 21, 2022). See Table 1A in Appendix A for a list of the weeks and corresponding start and end dates.

**Data Source:** CCM

# Deaths

**Figure 3. Deaths among confirmed cases of COVID-19 by week of death: Ontario**



**Note:** Cases without a death date are not included in the figure. Include cases with date of death ranging from week-4 (January 19 and 25, 2020) to Week 20 (May 15 and 21, 2022). See [Table 1A](#) in Appendix A for a list of the weeks and corresponding start and end dates.

**Data Source:** CCM

**Table 2. Summary of deaths among confirmed cases of COVID-19 by public health unit reported week: Ontario**

Deaths	Reported Week 19 (May 8 to 14, 2022)	Reported Week 20 (May 15 to 21, 2022)	Cumulative case count up to May 21, 2022	Cumulative rate per 100,000 population
Number of deaths	34	16	13,175	89.4
Sex: Male	20	10	6,973	95.8
Sex: Female	14	6	6,138	82.3
Ages: 19 and under	0	0	17	0.5
Ages: 20-39	0	1	141	3.4
Ages: 40-59	0	1	925	23.7
Ages: 60-79	7	5	4,424	152.6
Ages: 80 and over	27	9	7,667	1,169.0

**Note:** Age and sex may not be reported for all cases. Reported week is the week the case was reported to the public health unit. This is different than the “week of death” presented in Figure 3 which reflects the week the case was reported to have a ‘Fatal’ outcome. Interpret information for the most recent week with caution due to reporting lags.

**Data Source:** CCM

## Sub-populations of interest

**Table 3. Summary of cases of COVID-19 among health care workers: Ontario**

Health care workers	Reported Week 19 (May 8 to 14, 2022)	Reported Week 20 (May 15 to 21, 2022)	Cumulative case count up to May 21, 2022
Number of cases	805	501	52,922
Ever hospitalized	2	0	512
Ever in ICU	1	0	102

**Note:** Interpret information for the most recent week with caution due to reporting lags.

**Data Source:** CCM

**Table 4. Summary of cases of COVID-19 associated with long-term care home outbreaks: Ontario**

Long-term care home associated cases	Reported Week 19 (May 8 to 14, 2022)	Reported Week 20 (May 15 to 21, 2022)	Cumulative case count up to May 21, 2022
Residents	615	512	31,269
Deaths among residents	8	3	4,542
Health care workers	101	70	13,113
Deaths among health care workers	1	0	11

**Note:** Information on how long-term care home residents and health care workers are identified is available in the technical notes. Interpret information for the most recent week with caution due to reporting lags.

**Data Source:** CCM

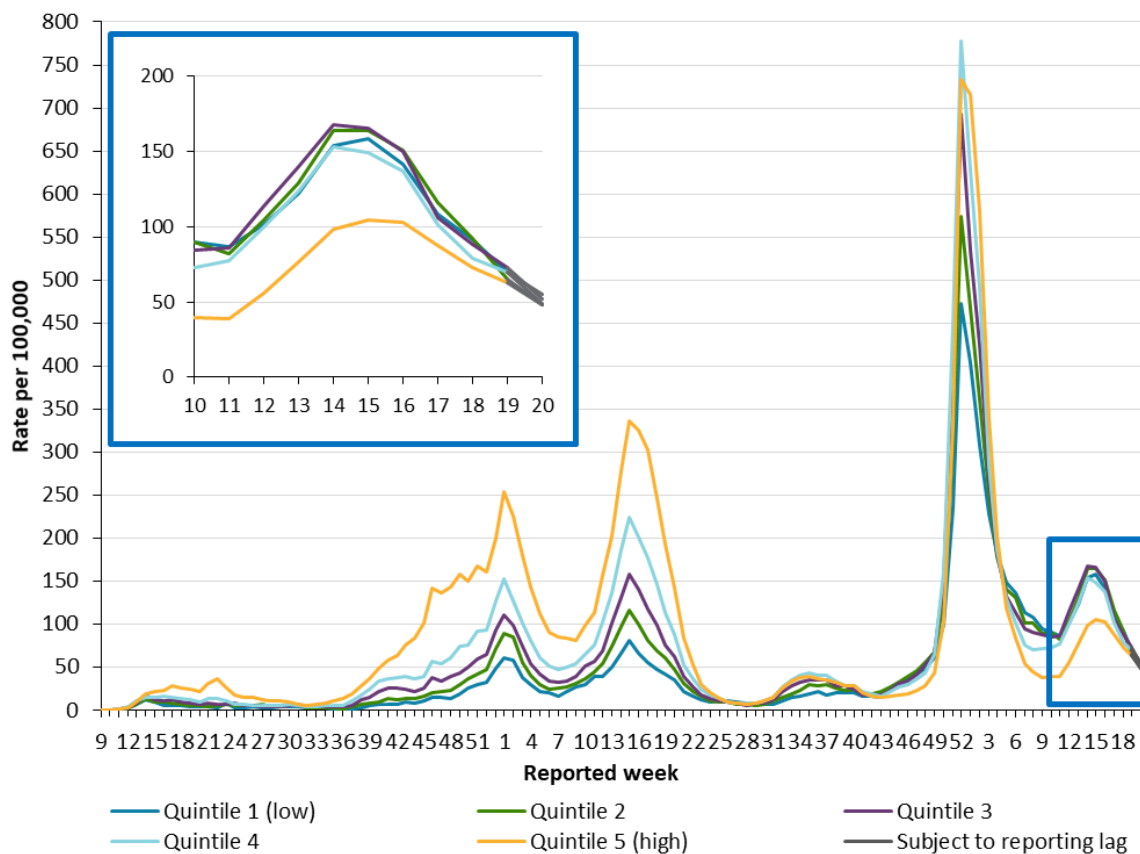
**Table 5: Summary of reinfection cases of COVID-19 by age group and public health unit reported week: Ontario**

Age Group	Reported Week 19 (May 8 to 14, 2022)	Reported Week 20 (May 15 to 21, 2022)	Cumulative count from November 1, 2020 up to May 21, 2022	Percent of reinfection cases
Ages: 0-4	6	6	189	1.1%
Ages: 5-11	9	8	337	1.9%
Ages: 12-19	15	9	804	4.6%
Ages: 20-39	173	129	8,245	46.8%
Ages: 40-59	122	107	5,197	29.5%
Ages: 60-79	53	64	1,712	9.7%
Ages: 80 and over	53	66	1,148	6.5%
<b>Total reinfection cases</b>	<b>431</b>	<b>390</b>	<b>17,633</b>	<b>100.0%</b>

**Note:** Cases identified as reinfections meeting the [provincial definition](#) as either a laboratory-based reinfection or a time-based reinfection, as indicated by public health units. The provincial confirmed reinfection case definition was updated January 17, 2022 to include a time-based reinfection definition. Cumulative counts include cases of COVID-19 reinfection reported starting week-45 (November 1 to 7, 2020). Not all cases have a reported age or sex. Data corrections or updates can result in case records being removed and or updated from past reports and may result in subset totals (i.e., age group, sex) differing from past publicly reported case counts.

**Data Source:** CCM

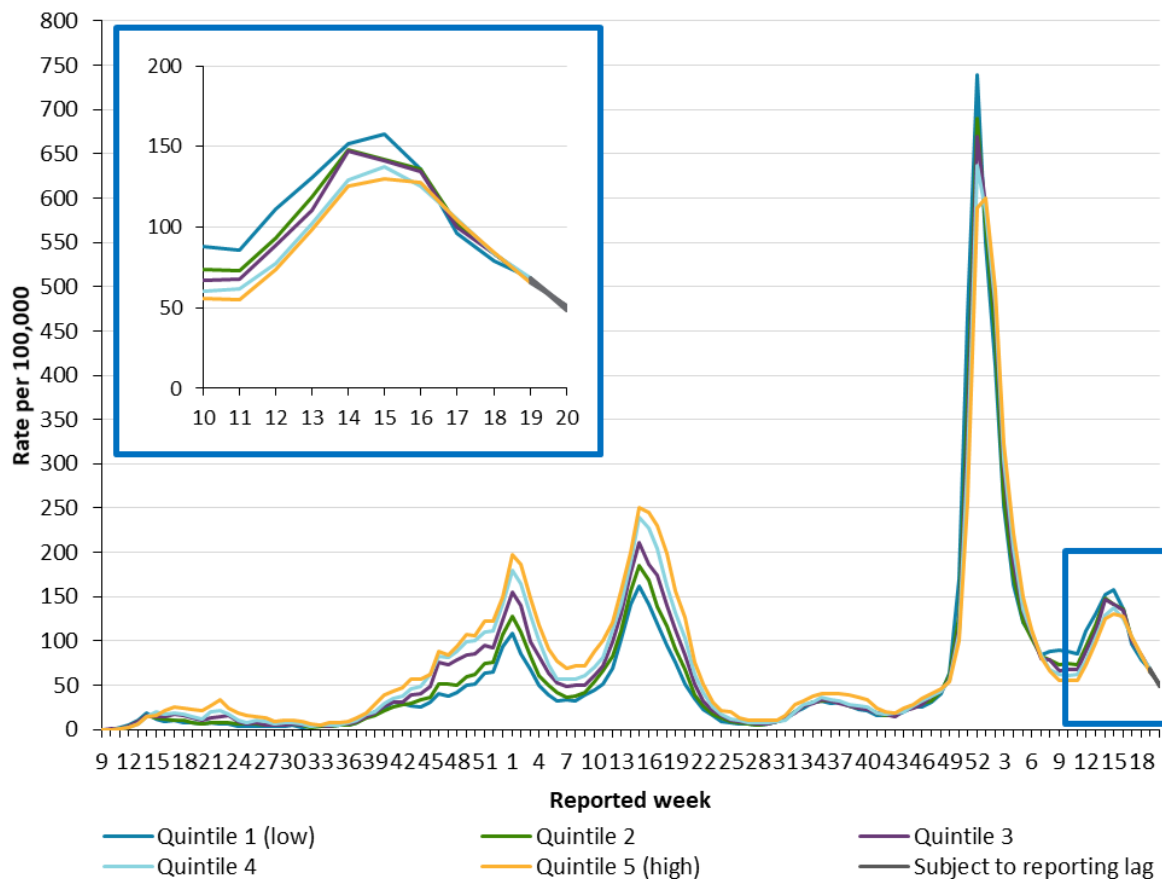
**Figure 4. Rate of confirmed cases of COVID-19 per 100,000 population by quintile of neighbourhood diversity and public health unit reported week: Ontario**



**Note:** Neighbourhood diversity is measured using the ethnic concentration dimension of the Ontario Marginalization Index. The ethnic concentration dimension is based on the proportion of non-white and non-Indigenous residents and/or the proportion of immigrants that arrived in Canada within the past five years. Only weeks with more than 10 cases by public health unit reporting date are included (starting in week 9). Include cases with reported dates ranging from weeks 9 (February 23 to 29, 2020) to Week 20 (May 15 to 21, 2022). As of June 8, 2021, all rate denominators were changed to the 2021 OHIP RPDB population, and as a result, rates shown here may differ from previous reports. See Table 1A in Appendix A for a list of the weeks and corresponding start and end dates.

**Data Source:** CCM, Ontario Marginalization Index

**Figure 5. Rate of confirmed cases of COVID-19 per 100,000 population by quintile of neighbourhood material deprivation and public health unit reported week: Ontario**



**Note:** Neighbourhood material deprivation is measured using the material deprivation dimension of the Ontario Marginalization Index. The material deprivation dimension uses Canadian census data on income, quality of housing, educational attainment and family structure characteristics to assess the ability of individuals and communities to access and attain basic material needs. Only weeks with more than 10 cases by public health unit reporting date are included (starting in week 9). Include cases with reported dates ranging from weeks 9 (February 23 to 29, 2020) to Week 20 (May 15 to 21, 2022). As of June 8, 2021, all rate denominators were changed to the 2021 OHIP RPDB population, and as a result, rates shown here may differ from previous reports. See Table 1A in Appendix A for a list of the weeks and corresponding start and end dates.

**Data Source:** CCM, Ontario Marginalization Index

**Table 6: Summary of cases of COVID-19 by quintile of neighbourhood diversity and public health unit reported week: Ontario**

	Cases Reported Week 19 (May 8 to 14, 2022)	Cases Reported Week 20 (May 15 to 21, 2022)	Cumulative case count up to May 21, 2022	Cumulative rate per 100,000 population up to May 21, 2022
Quintile 1 (least diverse)	1,544	1,086	121,251	5,458.8
Quintile 2	1,542	1,139	151,999	6,418.5
Quintile 3	1,883	1,345	193,731	7,473.9
Quintile 4	2,186	1,712	271,767	8,689.2
Quintile 5 (most diverse)	2,720	2,083	462,146	10,692.2

**Note:** Neighbourhood diversity is measured using the ethnic concentration dimension of the Ontario Marginalization Index. The ethnic concentration dimension is based on the proportion of non-white and non-Indigenous residents and/or the proportion of immigrants that arrived in Canada within the past five years. Cumulative counts and rates include cases of COVID-19 reported starting week 9 (February 23 to 29, 2020).

**Data Source:** CCM, Ontario Marginalization Index

**Table 7: Summary of cases of COVID-19 by quintile of neighbourhood material deprivation and public health unit reported week: Ontario**

	Cases Reported Week 19 (May 8 to 14, 2022)	Cases Reported Week 20 (May 15 to 21, 2022)	Cumulative case count up to May 21, 2022	Cumulative rate per 100,000 population up to May 21, 2022
Quintile 1 (least material deprivation)	2,351	1,711	254,026	7,371.2
Quintile 2	2,086	1,600	235,524	7,586.1
Quintile 3	1,871	1,344	228,861	8,253.4
Quintile 4	1,810	1,325	229,901	8,749.6
Quintile 5 (most material deprivation)	1,757	1,385	252,582	9,424.7

**Note:** Neighbourhood material deprivation is measured using the material deprivation dimension of the Ontario Marginalization Index. The material deprivation dimension uses Canadian census data on income, quality of housing, educational attainment and family structure characteristics to assess the ability of individuals and communities to access and attain basic material needs. Cumulative counts and rates include cases of COVID-19 reported starting week 9 (February 23 to 29, 2020).

**Data Source:** CCM, Ontario Marginalization Index

## Outbreaks

**Table 8. Number of public health unit declared COVID-19 outbreaks by setting type: Ontario**

Setting Type	Reported Week 20 (May 15 to 21, 2022)	Number of ongoing outbreaks	Cumulative number of outbreaks reported to May 21, 2022
<b>Congregate Care</b>	<b>53</b>	<b>288</b>	<b>6,077</b>
Long-term care homes	19	147	2,674
Retirement homes	17	90	1,919
Hospitals	17	51	1,484
<b>Congregate Living</b>	<b>26</b>	<b>53</b>	<b>2,927</b>
Correctional facility	2	8	157
Shelter	6	10	605
Group Home/supportive housing	18	35	2,165
<b>Total number of outbreaks*</b>	<b>79</b>	<b>341</b>	<b>9,004</b>

**Note:** Reported week is based on the outbreak reported date, and if unavailable, the date the public health unit created the outbreak. Ongoing outbreaks are those that are reported in CCM as 'Open' and without a 'Declared Over Date' recorded. Interpret information for the most recent week with caution due to reporting lags. Outbreak categories are mutually exclusive. Ongoing re-classification of settings for reported outbreaks can result in outbreak counts that may differ from previously reported counts. Outbreaks in settings outside of Ontario are excluded from all outbreak counts.

\*Only includes outbreaks in the setting types above

**Data Source:** CCM

**Table 9. Confirmed cases of COVID-19 associated with COVID-19 outbreaks by setting type and public health unit reported week: Ontario**

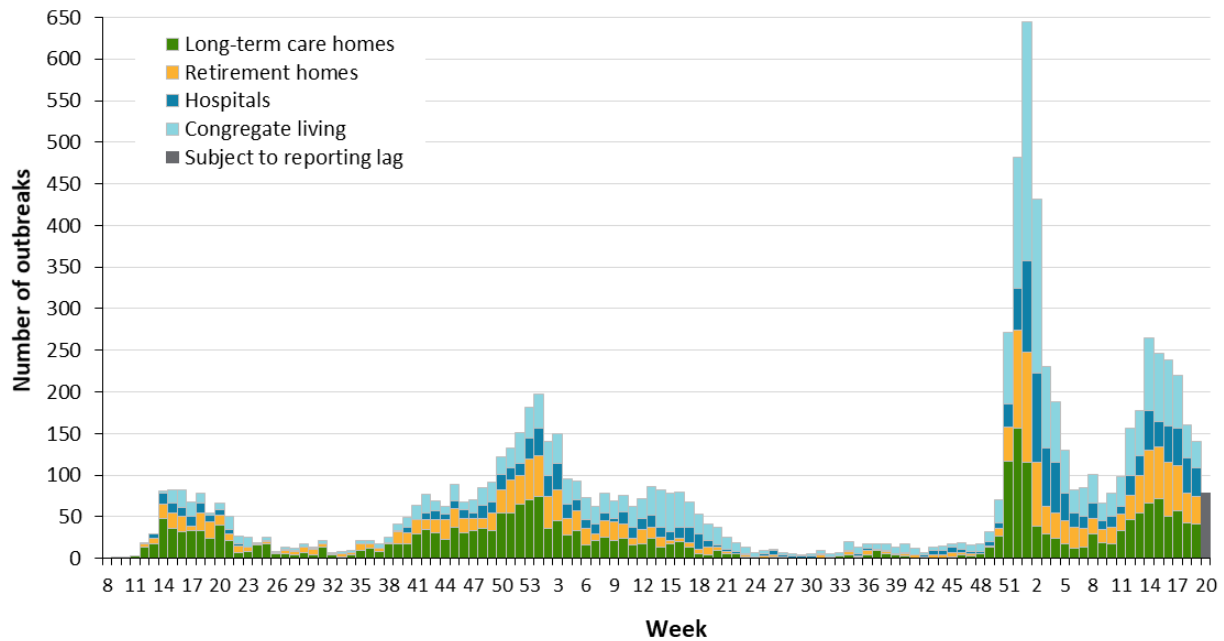
Cases associated with the outbreak setting type	Reported Week 19 (May 8 to 14, 2022)	Reported Week 20 (May 15 to 21, 2022)	Cumulative number of cases
<b>Congregate Care</b>	<b>1,604</b>	<b>1,188</b>	<b>94,931</b>
Long-term care homes	913	770	58,837
Retirement homes	442	294	21,260
Hospitals	249	124	14,834
<b>Congregate Living</b>	<b>141</b>	<b>100</b>	<b>20,391</b>
Correctional facility	17	37	5,698
Shelter	19	10	5,186
Group Home/supportive housing	105	53	9,507
<b>Total number of cases*</b>	<b>1,745</b>	<b>1,288</b>	<b>115,322</b>

**Note:** Interpret case counts for the most recent week with caution due to reporting lags. Outbreak categories are mutually exclusive. Ongoing re-classification of settings for reported outbreaks can result in outbreak counts that may differ from previously reported counts. Outbreaks in settings outside of Ontario are excluded from all outbreak counts.

\*Only includes cases associated to outbreaks in the setting types above

**Data Source:** CCM

**Figure 6. Public health unit declared COVID-19 outbreaks by outbreak setting type and public health unit reported week: Ontario**



**Note:** If public health unit outbreak reported date is unavailable, the date the public health unit created the outbreak is used. Week 8 refers to February 16 and 22, 2020 and Week 20 refers to May 15 and 21, 2022. Congregate living includes group homes, shelters, and correctional facilities.

**Data Source:** CCM

# Technical Notes

## Data Sources

- The data for this report were based on information successfully extracted from the Public Health Case and Contact Management Solution (CCM) for all PHUS by PHO as of:
  - **May 24, 2022 at 1 p.m.** for cases reported from December 1, 2021 onwards
  - **May 24, 2022 at 9 a.m.** for cases reported from January 1, 2021 to November 30, 2021
  - **April 29, 2022 at 9 a.m.** for cases reported up to December 31, 2020.
- Ontario population estimate data were sourced from Statistics Canada. Population estimates 2001-2020: Table 1 annual population estimates by age and sex for July 1, 2001 to 2020, health regions, Ontario [unpublished data table]. Ottawa, ON: Government of Canada; 2021 [received April 22, 2021].
- Statistics Canada Postal Code Conversion File Plus (PCCF+), version 7E.
- The health equity (neighbourhood-level diversity and material deprivation) analyses use data from the 2016 Ontario Marginalization Index (ON-Marg), and population counts from the Ontario Health Insurance Plan (OHIP) Registered Person Database (RPDB) as of May 1, 2021 (provided by the Institute for Clinical Evaluative Sciences [ICES]):
  - Matheson FI; van Ingen T. 2016 Ontario marginalization index. Toronto, ON: Providence St. Joseph's and St. Michael's Healthcare; 2018. Joint publication with Public Health Ontario.
  - Chung H, Fung K, Ishiguro L, Paterson M, et al. Characteristics of COVID-19 diagnostic test recipients, Applied Health Research Questions (AHRQ) # 2021 0950 080 000. Toronto: Institute for Clinical Evaluative Sciences; 2020.

## Data Caveats and Methods: Case Data

- Due to changes in the availability of testing, driven by increasing COVID-19 cases related to the Omicron variant, case counts in this report are an underestimate of the true number of individuals with COVID-19 in Ontario. As such, data should be interpreted with caution.
- The data represent case information reported to public health units and recorded in CCM. As a result, all counts are subject to varying degrees of underreporting due to a variety of factors, such as disease awareness and medical care seeking behaviours, which may depend on severity of illness, clinical practice, changes in laboratory testing, and reporting behaviours.
- Observed trends over time should be interpreted with caution for the most recent period due to reporting and/or data entry lags.
- Only cases meeting the confirmed case classification as listed in the [MOH Case Definition – Coronavirus Disease \(COVID-19\) document](#) are included in the report counts from CCM.
- Cases of confirmed reinfection, as defined in the provincial case definitions, are counted as unique investigations.

- Case classification information may be updated for individuals with a positive result issued from a point-of-care assays.
- COVID-19 cases from CCM for which the Classification and/or Disposition was reported as ENTERED IN ERROR, DOES NOT MEET DEFINITION, IGNORE, DUPLICATE, or any variation on these values have been excluded. The provincial case count for COVID-19 may include some duplicate records, if these records were not identified and resolved.
- Reported date is the date the case was reported to the public health unit. This is different than the daily change in cases released by the Province for the same time period, which reflects the difference in cumulative counts reported to the Province between one day and the next.
- Reported weeks were created to align with the Public Health Agency of Canada (PHAC) influenza surveillance weeks.
- Cases with unknown or missing ages were excluded from age-specific analyses.
- Health care worker includes cases that reported 'Yes' to any of the following occupations: health care worker, doctor, nurse, dentist, dental hygienist, midwife, other medical technicians, personal support worker, respiratory therapist, first responder.
- For surveillance purposes, a COVID-19 death is defined as a death resulting from a clinically compatible illness unless there is a clear alternative cause of death that cannot be related to COVID-19 (e.g., trauma, medically assisted death). There should be no period of complete recovery from COVID-19 between illness and reported death.
- Deaths are determined by using the outcome and Type of Death fields in CCM. COVID-19 deaths are counted where the Outcome value is 'Fatal' and the Type of Death value is not 'DOPHS was unrelated to cause of death' or 'Under PHU Review'.
  - COVID-19 deaths are placed in time using the 'Date of Death' field in CCM. If the date of death is missing, the outcome date field is used as a proxy.
- Resolved cases are determined only for COVID-19 cases that are not considered COVID-19 deaths. The following cases are classified as resolved:
  - Cases that are reported as 'recovered' in CCM based on local public health unit assessment
  - Cases that are not hospitalized and are 14 days past their symptom onset date or specimen collection date (where symptom onset date is not known)
  - Cases that are currently hospitalized (no hospitalization end date entered) and have a status of 'closed' in CCM (indicating public health unit follow up is complete) and are 14 days past their symptom onset date or specimen collection date
  - Cases that died with a Type of Death = "DOPHS was unrelated to cause of death". These are considered resolved for the purpose of COVID-19 surveillance and reporting.
- Data on hospital admissions, ICU admissions and deaths are likely under-reported as these events may occur after the completion of public health follow up of cases. Cases that were admitted to hospital or died after follow-up was completed may not be captured in CCM.

- Hospitalization includes all cases hospitalized (or that had their hospital stay extended) because of COVID-19. It includes cases that have been discharged from hospital as well as cases that are currently hospitalized. Includes Intensive Care Unit (ICU) cases but not emergency room visits. Hospitalizations were identified by a reported hospital admission date or reported 'Yes' for hospitalization/ICU.
- ICU admission includes all cases for which an ICU admission date was reported at the time of data extraction. It is a subset of the count of hospitalized cases. It includes cases that have been treated or that are currently being treated in an ICU.
- Male/Female information presented in this report are sourced from the Sex field in CCM and are intended to represent sex assigned at birth. On October 14, 2021, changes were made in CCM to enable reporting on the Sex field where this data field is supplemented by archived Male/Female information previously entered in the Gender field.
- 'Long-term care home residents' includes cases that reported 'Yes' to the risk factor 'Resident of a long-term care home'; or 'Yes' to the risk factor 'Resident of nursing home or other chronic care facility' and reported to be part of an outbreak assigned as a long-term care home (via the Outbreak number or case comments field); or were reported to be part of an outbreak assigned as a long-term care home (via the outbreak number or case comments field) with an age over 70 years and did not report 'No' to the risk factors 'Resident of long-term care home' or 'Resident of nursing home or other chronic care facility'. 'Long-term care home residents' excludes cases that reported 'Yes' to any of the health care worker occupational risk factors.
- 'Health care workers associated with long-term care outbreaks' includes 'health care workers' reported to be part of an outbreak assigned as a long-term care home (via the outbreak number or case comments field). Excludes cases that reported 'Yes' to risk factors 'Resident of long-term care home' or 'Resident of nursing home or other chronic care facility' and 'Yes' to the calculated 'health care workers' variable.
- Orientation of case counts by geography is based on the permanent health unit. This is equivalent to the diagnosing health unit (DHU) in iPHIS. DHU refers to the case's public health unit of residence at the time of illness onset and not necessarily the location of exposure. Cases for which the DHU was reported as MOH-PHO (to signify a case that is not a resident of Ontario) have been excluded from the analyses.
  - GTA health units include: Durham Region Health Department, Peel Public Health, Toronto Public Health and York Region Public Health
- Ongoing outbreaks are those that are reported in CCM as 'Open' and without a 'Declared Over Date' recorded. Closed outbreaks are 'Closed' or have a 'Declared Over Date' recorded in CCM or where the outbreak start date (determined by the onset date of first case, or if missing the reported date, or if missing the created date) is more than 5 months from the current date, even for outbreaks where the outbreak status value selected in CCM is 'OPEN'.
- Outbreaks are declared by the local medical officer of health or their designate in accordance to the Health Protection and Promotion Act and criteria outlined in [Ministry guidance documents](#).

## Data Caveats and Methods: ON-Marg

- ON-Marg is a data tool that combines a wide range of demographic indicators into multiple distinct dimensions of marginalization. It is an area-based index which assigns a measure of marginalization based on neighbourhood versus individual characteristics. As such, the broader demographic trends of an area may not reflect all residents of a neighbourhood owing to the inherent heterogeneity of demographic characteristics which can vary substantially especially across large rural geographies. For more information, please visit [PHO's ON-Marg website](#).
- Neighbourhood diversity is defined using the ethnic concentration dimension of ON-Marg, which measures populations who may experience marginalization related to racism and discrimination. It is based on the proportion of non-white and non-Indigenous residents (visible minority) and/or the proportion of immigrants that arrived in Canada within the past five years. 'Visible minority' is a term used by Statistics Canada that, although is considered to be outdated, is used here to be consistent with the Canadian census.
- Neighbourhood material deprivation is defined using the material deprivation dimension of ON-Marg, which is closely connected to poverty. It refers to the inability of individuals and communities to access and attain basic material needs. The indicators included in this dimension measure income, quality of housing, educational attainment and family structure characteristics.
- "Neighbourhoods" are considered to be Statistic Canada dissemination areas (DA). Cases were probabilistically matched to a DA based on their postal code using Statistics Canada's PCCF+ version 7E file, and subsequently assigned to a quintile of marginalization that contained 20% of Ontario neighbourhoods. The quintiles for the ethnic concentration and the material deprivation dimensions are ordered from quintiles 1 to 5, with quintile 1 having the lowest level of marginalization (i.e., least diverse or least deprived) and quintile 5 having the highest level of marginalization (i.e., most diverse or most deprived).
- The following were not included in analyses that summarize the impact of COVID-19 among Ontarians who may experience marginalization:
  - People who have tested positive for COVID-19 that reside in institutional and congregate settings are not included in the census data from which the marginalization indicators (ethnic concentration and material deprivation) are derived. Although these cases represent a large number of cases overall and deaths, their exclusion ensures appropriate comparisons since institutional and congregate setting residents are excluded from ON-Marg.
  - People who have tested positive for COVID-19 that reside in census dissemination areas where data has been suppressed, and cases that have missing or invalid postal codes could not be assigned to a quintile of marginalization.
  - Due to data suppression for some census indicators on Indian Reserves in Ontario, residents of Indian Reserves could not be included in ON-Marg and therefore people who have tested positive for COVID-19 and are living on Indian Reserves could not be assigned to a quintile of marginalization. While Indigenous individuals living off reserves are included in this analysis, Indigeneity data is not currently collected or captured in dimensions of ON-Marg.

- Population counts used in rate denominators were provided by ICES. Individuals alive and eligible for the Ontario Health Insurance Plan (OHIP) as of January 1st, 2021 using the OHIP RPDB were included.
  - Individuals residing in long-term care (LTC) homes were excluded. Recent health care transaction records (e.g., OHIP physician billings, Ontario Drug Benefit [ODB] Plan claims) and Resident Assessment Instrument (RAI) assessments from the Continuing Care Reporting System (CCRS) were used to identify individuals residing in a LTC home near the period prior to the index date.
  - Postal codes were assigned to individuals according to the most recent residential address available in the OHIP RPDB.
- This work is supported by the Applied Health Research Questions (AHRQ) Portfolio at ICES, which is funded by the Ontario Ministry of Health, and Ontario Health Data Platform (OHDP), a Province of Ontario initiative to support Ontario's ongoing response to COVID-19 and its related impacts. Parts of this material are based on data and information compiled and provided by the Ontario Ministry of Health. The analyses, conclusions, opinions and statements expressed herein are solely those of the authors and do not reflect those of ICES, the OHDP or the funding or data sources; no endorsement is intended or should be inferred. For more information on AHRQ and how to submit a request, please visit [www.ices.on.ca/DAS/AHRQ](http://www.ices.on.ca/DAS/AHRQ).

## Appendix A

**Table 1A. Confirmed cases of COVID-19 by public health unit reported week: Ontario**

Reported Week	Start date	End date	Number of cases	Cumulative count
2	January 5, 2020	January 11, 2020	0	0
3	January 12, 2020	January 18, 2020	0	0
4	January 19, 2020	January 25, 2020	3	3
5	January 26, 2020	February 1, 2020	0	3
6	February 2, 2020	February 8, 2020	2	5
7	February 9, 2020	February 15, 2020	0	5
8	February 16, 2020	February 22, 2020	1	6
9	February 23, 2020	February 29, 2020	13	19
10	March 1, 2020	March 7, 2020	15	34
11	March 8, 2020	March 14, 2020	148	182
12	March 15, 2020	March 21, 2020	447	629
13	March 22, 2020	March 28, 2020	1,327	1,956
14	March 29, 2020	April 4, 2020	2,793	4,749
15	April 5, 2020	April 11, 2020	3,165	7,914
16	April 12, 2020	April 18, 2020	4,257	12,171
17	April 19, 2020	April 25, 2020	3,649	15,820
18	April 26, 2020	May 2, 2020	2,899	18,719
19	May 3, 2020	May 9, 2020	2,353	21,072
20	May 10, 2020	May 16, 2020	2,223	23,295
21	May 17, 2020	May 23, 2020	2,618	25,913
22	May 24, 2020	May 30, 2020	2,611	28,524
23	May 31, 2020	June 6, 2020	2,301	30,825

Reported Week	Start date	End date	Number of cases	Cumulative count
24	June 7, 2020	June 13, 2020	1,472	32,297
25	June 14, 2020	June 20, 2020	1,225	33,522
26	June 21, 2020	June 27, 2020	1,250	34,772
27	June 28, 2020	July 4, 2020	1,085	35,857
28	July 5, 2020	July 11, 2020	866	36,723
29	July 12, 2020	July 18, 2020	931	37,654
30	July 19, 2020	July 25, 2020	993	38,647
31	July 26, 2020	August 1, 2020	808	39,455
32	August 2, 2020	August 8, 2020	591	40,046
33	August 9, 2020	August 15, 2020	610	40,656
34	August 16, 2020	August 22, 2020	728	41,384
35	August 23, 2020	August 29, 2020	849	42,233
36	August 30, 2020	September 5, 2020	976	43,209
37	September 6, 2020	September 12, 2020	1,508	44,717
38	September 13, 2020	September 19, 2020	2,371	47,088
39	September 20, 2020	September 26, 2020	3,122	50,210
40	September 27, 2020	October 3, 2020	4,224	54,434
41	October 4, 2020	October 10, 2020	5,039	59,473
42	October 11, 2020	October 17, 2020	5,277	64,750
43	October 18, 2020	October 24, 2020	6,041	70,791
44	October 25, 2020	October 31, 2020	6,387	77,178
45	November 1, 2020	November 7, 2020	7,601	84,779
46	November 8, 2020	November 14, 2020	10,442	95,221
47	November 15, 2020	November 21, 2020	10,036	105,257
48	November 22, 2020	November 28, 2020	11,138	116,395

Reported Week	Start date	End date	Number of cases	Cumulative count
49	November 29, 2020	December 5, 2020	12,683	129,078
50	December 6, 2020	December 12, 2020	13,062	142,140
51	December 13, 2020	December 19, 2020	15,662	157,802
52	December 20, 2020	December 26, 2020	15,621	173,423
53	December 27, 2020	January 2, 2021	20,455	193,878
1	January 3, 2021	January 9, 2021	24,872	218,750
2	January 10, 2021	January 16, 2021	21,378	240,128
3	January 17, 2021	January 23, 2021	16,404	256,532
4	January 24, 2021	January 30, 2021	12,768	269,300
5	January 31, 2021	February 6, 2021	9,777	279,077
6	February 7, 2021	February 13, 2021	7,898	286,975
7	February 14, 2021	February 20, 2021	7,458	294,433
8	February 21, 2021	February 27, 2021	7,681	302,114
9	February 28, 2021	March 6, 2021	7,934	310,048
10	March 7, 2021	March 13, 2021	9,480	319,528
11	March 14, 2021	March 20, 2021	11,021	330,549
12	March 21, 2021	March 27, 2021	14,391	344,940
13	March 28, 2021	April 3, 2021	18,939	363,879
14	April 4, 2021	April 10, 2021	25,578	389,457
15	April 11, 2021	April 17, 2021	30,885	420,342
16	April 18, 2021	April 24, 2021	28,343	448,685
17	April 25, 2021	May 1, 2021	25,205	473,890
18	May 2, 2021	May 8, 2021	20,750	494,640
19	May 9, 2021	May 15, 2021	16,524	511,164
20	May 16, 2021	May 22, 2021	12,641	523,805

Reported Week	Start date	End date	Number of cases	Cumulative count
21	May 23, 2021	May 29, 2021	7,756	531,561
22	May 30, 2021	June 5, 2021	5,211	536,772
23	June 6, 2021	June 12, 2021	3,483	540,255
24	June 13, 2021	June 19, 2021	2,417	542,672
25	June 20, 2021	June 26, 2021	1,881	544,553
26	June 27, 2021	July 3, 2021	1,473	546,026
27	July 4, 2021	July 10, 2021	1,226	547,252
28	July 11, 2021	July 17, 2021	1,044	548,296
29	July 18, 2021	July 24, 2021	1,106	549,402
30	July 25, 2021	July 31, 2021	1,347	550,749
31	August 1, 2021	August 7, 2021	1,904	552,653
32	August 8, 2021	August 14, 2021	3,169	555,822
33	August 15, 2021	August 21, 2021	4,140	559,962
34	August 22, 2021	August 28, 2021	4,767	564,729
35	August 29, 2021	September 4, 2021	5,180	569,909
36	September 5, 2021	September 11, 2021	5,053	574,962
37	September 12, 2021	September 18, 2021	4,913	579,875
38	September 19, 2021	September 25, 2021	4,396	584,271
39	September 26, 2021	October 2, 2021	3,951	588,222
40	October 3, 2021	October 9, 2021	3,842	592,064
41	October 10, 2021	October 16, 2021	2,903	594,967
42	October 17, 2021	October 23, 2021	2,624	597,591
43	October 24, 2021	October 30, 2021	2,500	600,091
44	October 31, 2021	November 6, 2021	3,292	603,383
45	November 7, 2021	November 13, 2021	3,981	607,364

Reported Week	Start date	End date	Number of cases	Cumulative count
46	November 14, 2021	November 20, 2021	4,579	611,943
47	November 21, 2021	November 27, 2021	5,432	617,375
48	November 28, 2021	December 4, 2021	6,603	623,978
49	December 5, 2021	December 11, 2021	9,009	632,987
50	December 12, 2021	December 18, 2021	19,095	652,082
51	December 19, 2021	December 25, 2021	52,770	704,852
52	December 26, 2021	January 1, 2022	100,909	805,761
1	January 2, 2022	January 8, 2022	89,468	895,229
2	January 9, 2022	January 15, 2022	72,388	967,617
3	January 16, 2022	January 22, 2022	46,367	1,013,984
4	January 23, 2022	January 29, 2022	31,451	1,045,435
5	January 30, 2022	February 5, 2022	22,149	1,067,584
6	February 6, 2022	February 12, 2022	17,769	1,085,353
7	February 13, 2022	February 19, 2022	13,524	1,098,877
8	February 20, 2022	February 26, 2022	12,389	1,111,266
9	February 27, 2022	March 5, 2022	11,369	1,122,635
10	March 6, 2022	March 12, 2022	11,372	1,134,007
11	March 13, 2022	March 19, 2022	11,293	1,145,300
12	March 20, 2022	March 26, 2022	14,368	1,159,668
13	March 27, 2022	April 2, 2022	18,062	1,177,730
14	April 3, 2022	April 9, 2022	22,490	1,200,220
15	April 10, 2022	April 16, 2022	22,994	1,223,214
16	April 17, 2022	April 23, 2022	21,844	1,245,058
17	April 24, 2022	April 30, 2022	17,102	1,262,160
18	May 1, 2022	May 7, 2022	14,081	1,276,241

Reported Week	Start date	End date	Number of cases	Cumulative count
19	May 8, 2022	May 14, 2022	11,270	1,287,511
20	May 15, 2022	May 21, 2022	8,496	1,296,007

**Table 2A. Confirmed cases of COVID-19 by public health unit and region: Ontario**

Public Health Unit Name	Cases reported Week 19	Rate per 100,000 population Reported Week 19	Cases reported Week 20	Rate per 100,000 population Reported Week 20
Northwestern Health Unit	209	257.4	176	216.8
Thunder Bay District Health Unit	303	192.1	233	147.7
<b>TOTAL NORTH WEST</b>	<b>512</b>	<b>214.3</b>	<b>409</b>	<b>171.2</b>
Algoma Public Health	140	118.8	74	62.8
North Bay Parry Sound District Health Unit	95	73.5	83	64.2
Porcupine Health Unit	105	123.5	81	95.3
Public Health Sudbury & Districts	237	115.5	152	74.1
Timiskaming Health Unit	35	103.3	20	59.0
<b>TOTAL NORTH EAST</b>	<b>612</b>	<b>107.1</b>	<b>410</b>	<b>71.8</b>
Ottawa Public Health	506	48.5	374	35.9
Eastern Ontario Health Unit	97	44.9	102	47.3
Hastings Prince Edward Public Health	111	64.2	94	54.4
Kingston, Frontenac and Lennox & Addington Public Health	313	149.6	237	113.3
Leeds, Grenville & Lanark District Health Unit	157	87.2	124	68.9
Renfrew County and District Health Unit	81	74.7	39	36.0
<b>TOTAL EASTERN</b>	<b>1,265</b>	<b>65.6</b>	<b>970</b>	<b>50.3</b>
Durham Region Health Department	518	72.8	453	63.7

Public Health Unit Name	Cases reported Week 19	Rate per 100,000 population Reported Week 19	Cases reported Week 20	Rate per 100,000 population Reported Week 20
Haliburton, Kawartha, Pine Ridge District Health Unit	118	61.9	108	56.6
Peel Public Health	884	56.5	727	46.5
Peterborough Public Health	117	79.0	66	44.6
Simcoe Muskoka District Health Unit	533	88.2	334	55.3
York Region Public Health	903	75.2	770	64.2
<b>TOTAL CENTRAL EAST</b>	<b>3,073</b>	<b>69.5</b>	<b>2,458</b>	<b>55.6</b>
Toronto Public Health	2,438	81.6	1,894	63.4
<b>TOTAL TORONTO</b>	<b>2,438</b>	<b>81.6</b>	<b>1,894</b>	<b>63.4</b>
Chatham-Kent Public Health	147	137.9	65	61.0
Grey Bruce Health Unit	109	61.9	47	26.7
Huron Perth Public Health	73	49.9	56	38.3
Lambton Public Health	89	66.9	60	45.1
Middlesex-London Health Unit	272	53.3	237	46.4
Southwestern Public Health	146	66.7	109	49.8
Windsor-Essex County Health Unit	308	71.5	240	55.7
<b>TOTAL SOUTH WEST</b>	<b>1,144</b>	<b>66.4</b>	<b>814</b>	<b>47.3</b>
Brant County Health Unit	103	67.1	66	43.0
City of Hamilton Public Health Services	704	121.0	451	77.5
Haldimand-Norfolk Health Unit	116	96.7	68	56.7
Halton Region Public Health	404	66.2	313	51.3

Public Health Unit Name	Cases reported Week 19	Rate per 100,000 population Reported Week 19	Cases reported Week 20	Rate per 100,000 population Reported Week 20
Niagara Region Public Health	372	77.2	281	58.3
Region of Waterloo Public Health and Emergency Services	346	57.2	245	40.5
Wellington-Dufferin-Guelph Public Health	181	58.0	117	37.5
<b>TOTAL CENTRAL WEST</b>	<b>2,226</b>	<b>77.7</b>	<b>1,541</b>	<b>53.8</b>
<b>TOTAL ONTARIO</b>	<b>11,270</b>	<b>76.5</b>	<b>8,496</b>	<b>57.7</b>

**Note:** Interpret information for the most recent week with caution due to reporting lags.

## Citation

Ontario Agency for Health Protection and Promotion (Public Health Ontario). Weekly epidemiologic summary: COVID-19 in Ontario – focus on May 15, 2022 to May 21, 2022. Toronto, ON: Queen’s Printer for Ontario; 2022.

## Disclaimer

This document was developed by Public Health Ontario (PHO). PHO provides scientific and technical advice to Ontario’s government, public health organizations and health care providers. PHO’s work is guided by the current best available evidence at the time of publication. The application and use of this document is the responsibility of the user. PHO assumes no liability resulting from any such application or use. This document may be reproduced without permission for non-commercial purposes only and provided that appropriate credit is given to PHO. No changes and/or modifications may be made to this document without express written permission from PHO.

## For Further Information

For more information, email [cd@oahpp.ca](mailto:cd@oahpp.ca).

## Public Health Ontario

Public Health Ontario is an agency of the Government of Ontario dedicated to protecting and promoting the health of all Ontarians and reducing inequities in health. Public Health Ontario links public health practitioners, front-line health workers and researchers to the best scientific intelligence and knowledge from around the world.

For more information about PHO, visit [publichealthontario.ca](http://publichealthontario.ca).

©Queen’s Printer for Ontario, 2022

Ontario 