

DAILY EPIDEMIOLOGICAL SUMMARY

COVID-19 in Ontario: January 15, 2020 to April 8, 2022

Due to changes in the Ministry of Health's [updated guidance on testing and case, contact and outbreak management](#), case counts in this report are an underestimate of the true number of individuals with COVID-19 in Ontario. In addition, data for hospitalizations, intensive care unit (ICU) admission and deaths in the most recent reporting period should be interpreted with caution due to data entry and reporting lags.

Introduction

This report includes the most current information available from CCM as of **April 8, 2022**.

A [weekly summary report](#) is available with additional information to complement the daily report.

Please visit the interactive [Ontario COVID-19 Data Tool](#) to explore recent COVID-19 data by public health unit, age group, sex, and trends over time. For more information about whole genome sequencing, please see the [SARS CoV-2 Whole Genome Sequencing in Ontario report](#).

This **daily** report provides an epidemiologic summary of recent COVID-19 activity in Ontario. The change in cases is determined by taking the cumulative difference between the current day and the previous day.

In this document, the term 'change in cases' refers to cases publicly reported by the province for a given day. Data corrections or updates can result in case records being removed and or updated from past reports and may result in subset totals for updated case counts (i.e., age group, sex) differing from the overall updated case counts.

The term public health unit reported date in this document refers to the date local public health units were first notified of the case.

Highlights

- There are a total of 1,192,437 confirmed cases of COVID-19 in Ontario reported to date.
- Compared to the previous day, this represents:
 - An increase of 3,797 confirmed cases (percent change of -11.6%)
 - An increase of 10* deaths (percent change of +66.7%)
 - An increase of 2,300 resolved cases (percent change of -13.0%)

* This number only includes deaths that have occurred in the last month. In addition, there was 1 death that occurred more than one month ago added to the cumulative count based on data cleaning.

Case Characteristics

Table 1a. Summary of recent confirmed cases of COVID-19: Ontario

	Change in cases April 7, 2022	Change in cases April 8, 2022	Percentage change April 8, 2022 compared to April 7, 2022	Cumulative case count as of April 8, 2022
Total number of cases	4,295	3,797	-11.6%	1,192,437
Number of deaths	6	10	+66.7%	12,548*
Number resolved	2,644	2,300	-13.0%	1,149,833

Note: The number of cases publicly reported by the province each day may not align with case counts reported to public health on a given day; public health unit reported date refers to the date local public health was first notified of the case. Data corrections or updates can result in case records being removed and or updated from past reports. The number of deaths presented in the change in cases column for each day only includes deaths that occurred in the last 30 days.

* There was 1 death that occurred more than one month ago added to the cumulative count based on data cleaning.

Data Source: CCM

Table 1b. Summary of recent confirmed cases of COVID-19 by age group and sex: Ontario

	Change in cases April 7, 2022	Change in cases April 8, 2022	Cumulative case count as of April 8, 2022
Sex: Male	1,635	1,447	561,104
Sex: Female	2,634	2,319	624,076
Ages: 0-4	129	98	35,585
Ages: 5-11	210	157	71,059
Ages: 12-19	232	174	101,294
Ages: 20-39	1,552	1,313	455,851
Ages: 40-59	1,384	1,220	332,476
Ages: 60-79	544	540	143,511
Ages: 80 and over	243	290	52,257

Note: Not all cases have an age or sex reported. Data corrections or updates can result in case records being removed and or updated from past reports and may result in subset totals (i.e., age group, sex) differing from past publicly reported case counts.

Data Source: CCM

Table 2. Summary of recent confirmed cases of COVID-19 in long-term care homes: Ontario

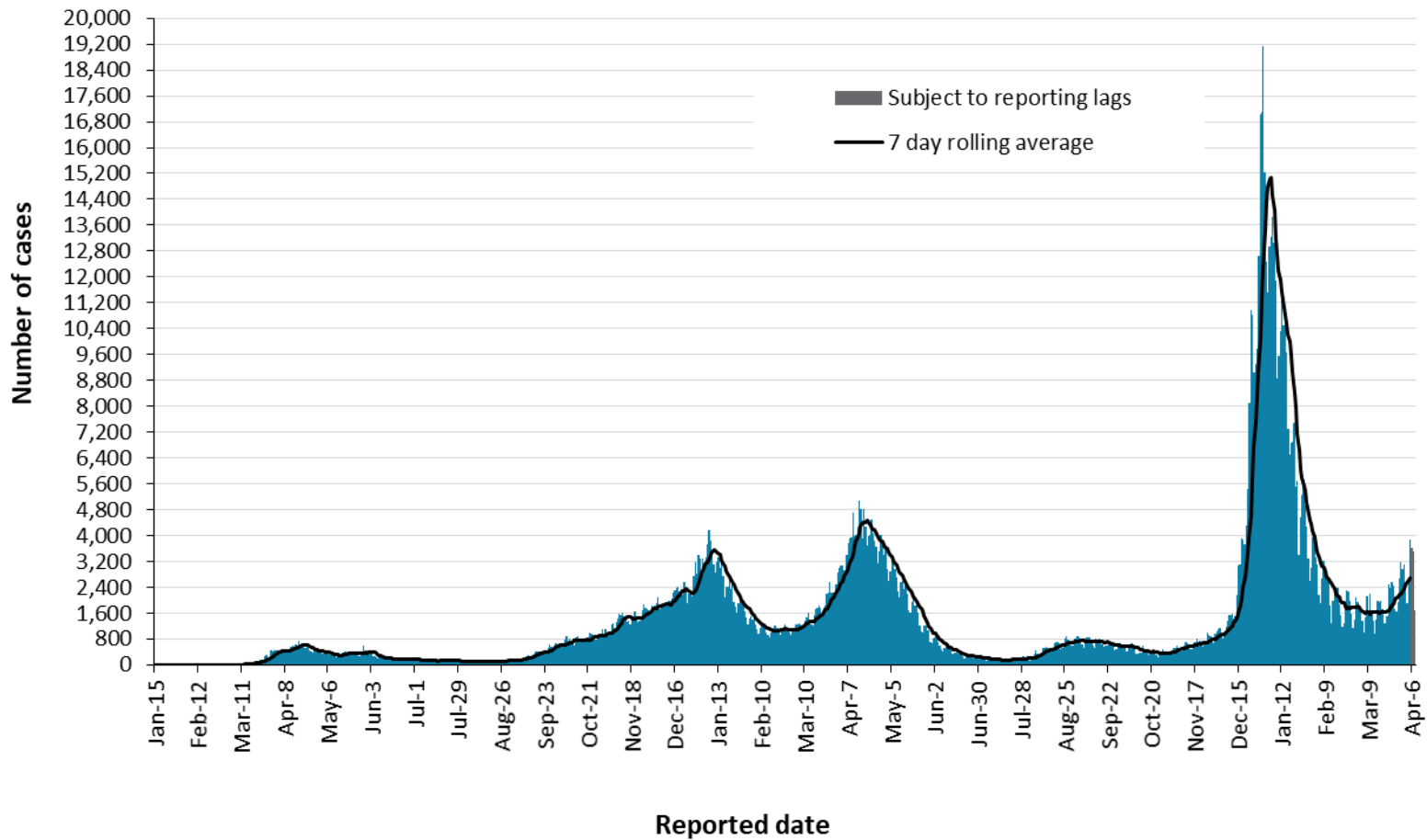
Long-term care home cases	Change in cases April 7, 2022	Change in cases April 8, 2022	Cumulative case count as of April 8, 2022
Residents	80	108	26,470
Health care workers	16	21	12,014
Deaths among residents	2	2	4,429
Deaths among health care workers	0	0	10

Note: Information on how long-term care home residents and health care workers are identified is available in the [technical notes](#). Also, the change in cases in these categories may represent existing case records that have been updated.

Data Source: CCM

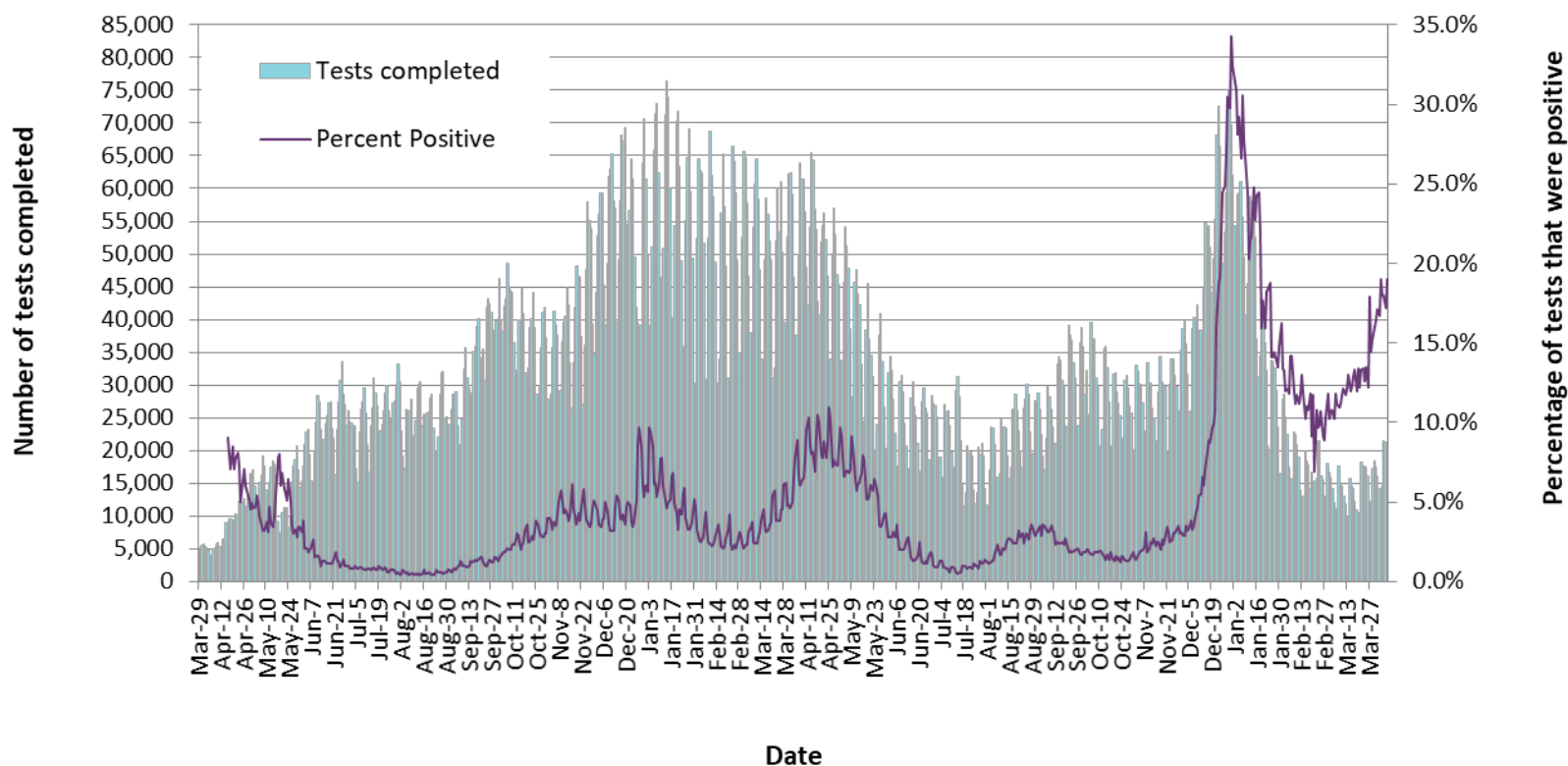
Time

Figure 1. Confirmed cases of COVID-19 by public health unit reported date: Ontario, January 15, 2020 to April 8, 2022



Note: Changes in testing eligibility went into effect on December 31, 2021, limiting access to testing and resulting in a change in the population being tested.
Data Source: CCM

Figure 2. Number of COVID-19 tests completed and percent positivity: Ontario, March 29, 2020 to April 7, 2022

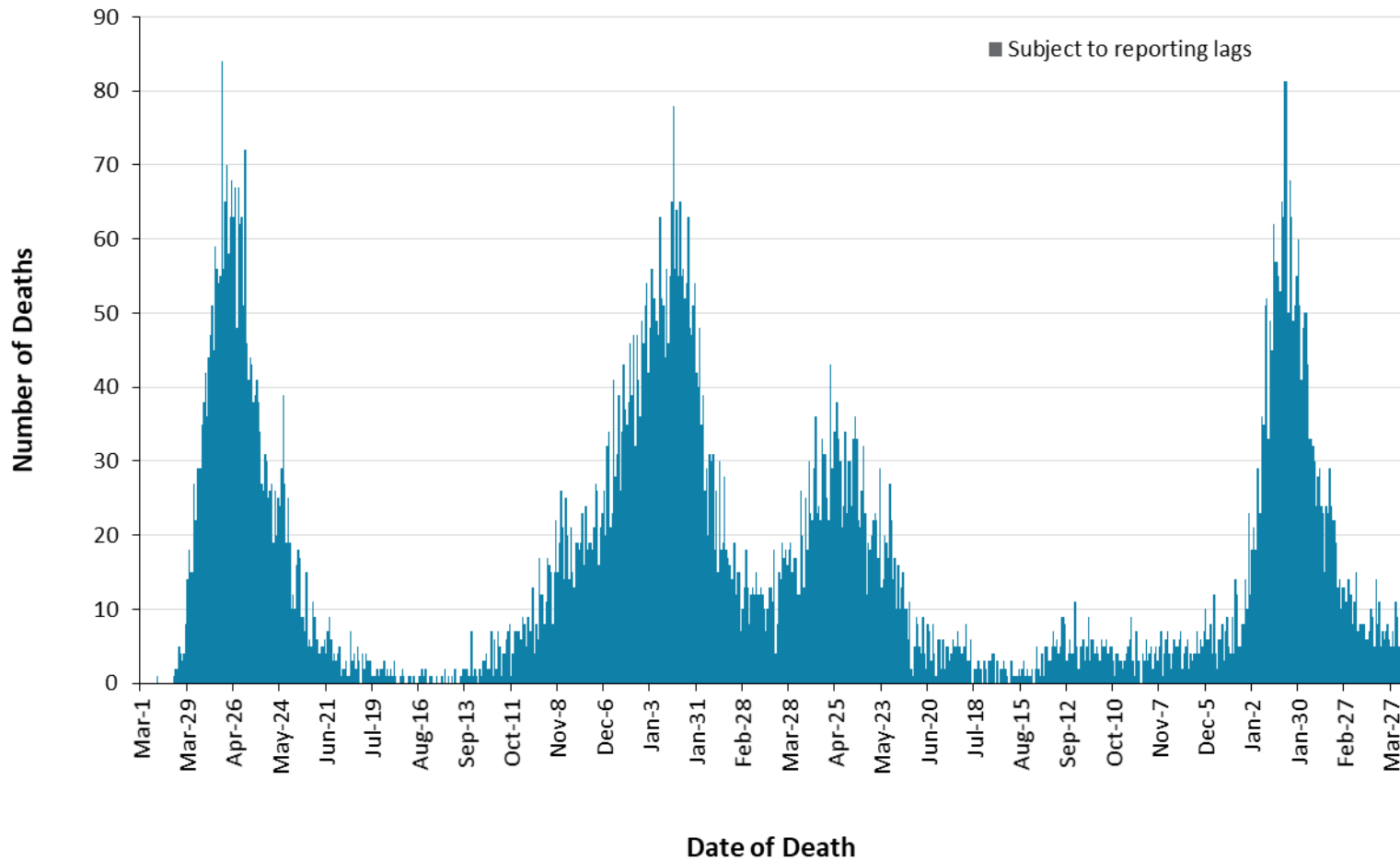


Note: The number of tests performed does not reflect the number of specimens or persons tested. More than one test may be performed per specimen or per person. As such, the percentage of tests that were positive does not necessarily translate to the number of specimens or persons testing positive. Changes in testing eligibility went into effect on December 31, 2021, limiting access to testing and resulting in a change in the population being tested.

Data Source: The Provincial COVID-19 Diagnostics Network, data reported by member microbiology laboratories.

Severity

Figure 3. Confirmed deaths among COVID-19 cases by date of death: Ontario, March 1, 2020 to April 8, 2022



Note: Cases without a death date are not included in the figure.

Data Source: CCM

Table 3. Confirmed cases of COVID-19 by severity: Ontario

	Cumulative case count as of April 8, 2022	Percentage of all cases
Cumulative deaths reported (please note there may be a reporting delay for deaths)	12,548	1.1%
Deaths reported in ages: 19 and under	15	<0.1%
Deaths reported in ages: 20-39	133	<0.1%
Deaths reported in ages: 40-59	892	0.3%
Deaths reported in ages: 60-79	4,223	2.9%
Deaths reported in ages: 80 and over	7,284	13.9%
Ever in ICU	8,030	0.7%
Ever hospitalized	44,529	3.7%

Note: Not all cases have an age reported. Data corrections or updates can result in case records being removed and/or updated and may result in totals differing from past publicly reported case counts. Percentage of deaths reported for each age group is calculated using all cases in the age group as the denominator.

Data Source: CCM

Geography

Table 4. Summary of recent confirmed cases of COVID-19 by public health unit and region: Ontario

Public Health Unit Name	Change in cases April 7, 2022	Change in cases April 8, 2022	Cumulative case count	Cumulative rate per 100,000 population
Northwestern Health Unit	56	26	6,981	8,598.9
Thunder Bay District Health Unit	39	32	10,044	6,368.8
TOTAL NORTH WEST	95	58	17,025	7,126.7
Algoma Public Health	69	42	7,090	6,016.6
North Bay Parry Sound District Health Unit	39	37	4,790	3,704.3
Porcupine Health Unit	29	34	6,511	7,660.0
Public Health Sudbury & Districts	60	63	13,120	6,392.0
Timiskaming Health Unit	11	17	1,482	4,373.6
TOTAL NORTH EAST	208	193	32,993	5,775.2
Ottawa Public Health	246	207	67,819	6,501.5
Eastern Ontario Health Unit	67	41	14,648	6,785.9
Hastings Prince Edward Public Health	68	72	8,532	4,936.6
Kingston, Frontenac and Lennox & Addington Public Health	120	145	13,744	6,568.8
Leeds, Grenville & Lanark District Health Unit	52	43	7,714	4,286.8
Renfrew County and District Health Unit	31	19	3,964	3,654.3
TOTAL EASTERN	584	527	116,421	6,033.8

Public Health Unit Name	Change in cases April 7, 2022	Change in cases April 8, 2022	Cumulative case count	Cumulative rate per 100,000 population
Durham Region Health Department	172	196	57,180	8,037.4
Haliburton, Kawartha, Pine Ridge District Health Unit	51	41	7,980	4,184.0
Peel Public Health	265	180	177,536	11,354.0
Peterborough Public Health	39	36	6,418	4,333.0
Simcoe Muskoka District Health Unit	245	251	40,306	6,667.5
York Region Public Health	188	193	103,407	8,615.4
TOTAL CENTRAL EAST	960	897	392,827	8,890.1
Toronto Public Health	956	891	296,609	9,925.3
TOTAL TORONTO	956	891	296,609	9,925.3
Chatham-Kent Public Health	35	42	7,532	7,064.3
Grey Bruce Health Unit	65	71	7,505	4,260.6
Huron Perth Public Health	26	44	6,476	4,428.2
Lambton Public Health	52	53	10,678	8,030.3
Middlesex-London Health Unit	130	81	34,864	6,827.9
Southwestern Public Health	66	45	12,356	5,644.4
Windsor-Essex County Health Unit	136	160	40,400	9,374.7
TOTAL SOUTH WEST	510	496	119,811	6,955.9
Brant County Health Unit	48	49	10,721	6,981.7
City of Hamilton Public Health Services	210	155	52,395	9,006.9
Haldimand-Norfolk Health Unit	44	25	7,773	6,477.1

Public Health Unit Name	Change in cases April 7, 2022	Change in cases April 8, 2022	Cumulative case count	Cumulative rate per 100,000 population
Halton Region Public Health	115	127	45,323	7,423.0
Niagara Region Public Health	278	171	37,148	7,711.4
Region of Waterloo Public Health and Emergency Services	204	110	43,131	7,126.4
Wellington-Dufferin-Guelph Public Health	83	98	20,260	6,493.7
TOTAL CENTRAL WEST	982	735	216,751	7,566.0
TOTAL ONTARIO	4,295	3,797	1,192,437	8,093.1

Notes: Health units with data corrections or updates could result in records being removed from totals, leading to negative or zero counts.

Data Source: CCM

Outbreaks

Table 5. Summary of recent confirmed COVID-19 outbreaks reported in long-term care homes, retirement homes and hospitals by status: Ontario

Institution type	Change in outbreaks April 7, 2022	Change in outbreaks April 8, 2022	Number of ongoing outbreaks	Cumulative number of outbreaks reported
Long-term care homes	15	12	132	2,340
Retirement homes	9	6	97	1,616
Hospitals	7	5	62	1,257

Note: Ongoing outbreaks are those that are reported in CCM as 'Open' and without a 'Declared Over Date' recorded. The start of the outbreak is determined by the onset date of first case, or if missing the outbreak reported date, or else if that is also missing, then the outbreak created date.

Data Source: CCM

Technical Notes

Data Sources

- The data for this report were based on information successfully extracted from the Public Health Case and Contact Management Solution (CCM) for all PHUs by PHO as of **April 8, 2022 at 1 p.m.** for cases reported from May 1, 2021 onwards and as of **April 7, 2022 at 9 a.m.** for cases reported up to April 40, 2021.
- CCM is a dynamic disease reporting system, which allows ongoing updates to data previously entered. As a result, data extracted from CCM represent a snapshot at the time of extraction and may differ from previous or subsequent reports.
- Ontario population estimate data were sourced from Statistics Canada. Population estimates 2001-2020: Table 1 annual population estimates by age and sex for July 1, 2001 to 2020, health regions, Ontario [unpublished data table]. Ottawa, ON: Government of Canada; 2021 [received April 72, 2021].
- COVID-19 test data were based on information from The Provincial COVID-19 Diagnostics Network, reported by member microbiology laboratories.

Data Caveats

- Due to changes in the availability of testing, driven by increasing COVID-19 cases related to the Omicron variant, case counts in this report are an underestimate of the true number of individuals with COVID-19 in Ontario. As such, data should be interpreted with caution.
- The data only represent cases reported to public health units and recorded in CCM. As a result, all counts will be subject to varying degrees of underreporting due to a variety of factors, such as disease awareness and medical care seeking behaviours, which may depend on severity of illness, clinical practice, changes in laboratory testing, and reporting behaviours.
- Data cleaning for older cases is incorporated on Mondays and Thursdays and may impact the case count published on Tuesdays and Fridays.
- Lags in CCM data entry due to weekend staffing may result in lower case counts than would otherwise be recorded.
- Only cases meeting the confirmed case classification as listed in the [MOH Case Definition – Coronavirus Disease \(COVID-19\) document](#) are included in the report counts from CCM.
- Cases of confirmed reinfection, as defined in the provincial case definitions, are counted as unique investigations.
- Case classification information may be updated for individuals with a positive result issued from a point-of-care assays.
- The number of tests performed does not reflect the number of specimens or persons tested. More than one test may be performed per specimen or per person. As such, the percentage of tests that were positive does not necessarily translate to the number of specimens or persons testing positive.
- Reported date is the date the case was reported to the public health unit.

- For surveillance purposes, a COVID-19 death is defined as a death resulting from a clinically compatible illness unless there is a clear alternative cause of death that cannot be related to COVID-19 (e.g., trauma, medically assisted death). There should be no period of complete recovery from COVID-19 between illness and reported death.
- Deaths are determined by using the Outcome and Type of Death fields in CCM. COVID-19 deaths are counted where the Outcome value is 'Fatal' and the Type of Death value is not 'DOPHS was unrelated to cause of death'.
 - COVID-19 deaths are placed in time using the 'Date of Death' field in CCM. If the date of death is missing, the outcome date field is used as a proxy.
- Resolved cases are determined only for COVID-19 cases that are not considered COVID-19 deaths. The following cases are classified as resolved:
 - Cases that are reported as 'recovered' in CCM based on local public health unit assessment
 - Cases that are not hospitalized and are 14 days past their symptom onset date or specimen collection date (where symptom onset date is not known)
 - Cases that are currently hospitalized (no hospital end date entered) and have a status of 'closed' in CCM (indicating public health unit follow-up is complete) and are 14 days past their symptom onset date or specimen collection date
 - Cases that died with a Type of Death = "DOPHS was unrelated to cause of death". These are considered resolved for the purpose of COVID-19 surveillance and reporting
- Hospitalization includes all cases hospitalized (or that had their hospital stay extended) because of COVID-19. It includes cases that have been discharged from hospital as well as cases that are currently hospitalized. Includes Intensive Care Unit (ICU) cases but not emergency room visits. Hospitalizations were identified by a reported hospital admission date or reported 'Yes' for hospitalization/ICU
- ICU admission includes all cases for which an ICU admission date was reported at the time of data extraction. It is a subset of the count of hospitalized cases. It includes cases that have been treated or that are currently being treated in an ICU.
- Orientation of case counts by geography is based on the permanent health unit. This is equivalent to the diagnosing health unit (DHU) in iPHIS. DHU refers to the case's public health unit of residence at the time of illness onset and not necessarily the location of exposure. Cases for which the DHU was reported as MOH-PHO (to signify a case that is not a resident of Ontario) have been excluded from the analyses.
- Male/Female information presented in this report are sourced from the Sex field in CCM and are intended to represent sex assigned at birth. On October 14, 2021 changes were made in CCM to enable reporting on the Sex field where these data are supplemented by archived Male/Female information previously entered in the Gender field.
- COVID-19 cases from CCM for which the Classification and/or Disposition was reported as ENTERED IN ERROR, DOES NOT MEET DEFINITION, IGNORE, DUPLICATE or any variation on these values have been excluded. The provincial case count for COVID-19 may include some duplicate records, if these records were not identified and resolved.

- Ongoing outbreaks are those that are reported in CCM as 'Open' and without a 'Declared Over Date' recorded. Closed outbreaks are 'Closed' or have a 'Declared Over Date' recorded in CCM or where the outbreak start date (determined by the onset date of first case, or if missing the reported date, or if missing the created date) is more than 5 months from the current date, even for outbreaks where the outbreak status value selected in CCM is 'OPEN'.
- 'Long-term care home residents' includes cases that reported 'Yes' to the risk factor 'Resident of a long-term care home'; or 'Yes' to the risk factor 'Resident of nursing home or other chronic care facility' and reported to be part of an outbreak assigned as a long-term care home (via the Outbreak number or case comments field); or were reported to be part of an outbreak assigned as a long-term care home (via the outbreak number or case comments field) with an age over 70 years and did not report 'No' to the risk factors 'Resident of long-term care home' or 'Resident of nursing home or other chronic care facility'. 'Long-term care home residents' excludes cases that reported 'Yes' to any of the health care worker occupational risk factors.
- The 'health care workers' variable includes cases that reported 'Yes' to any of the occupation of health care worker, doctor, nurse, dentist, dental hygienist, midwife, other medical technicians, personal support worker, respiratory therapist, first responder.
- 'Health care workers associated with long-term care outbreaks' includes 'health care workers' reported to be part of an outbreak assigned as a long-term care home (via the outbreak number or case comments field). Excludes cases that reported 'Yes' to risk factors 'Resident of long-term care home' or 'Resident of nursing home or other chronic care facility' and 'Yes' to the calculated 'health care workers' variable.
- Percent change is calculated by taking the difference between the current period (i.e., daily count or sum of the daily count over a 7-day period) and previous period (i.e., daily count or sum of the daily count over a 7-day period), divided by the previous period.

Appendix A

Table A1. Weekly rates of confirmed COVID-19 cases per 100,000 population over recent rolling 7-day periods, by reported date and public health unit: Ontario, March 24, 2022 to April 5, 2022

Public Health Unit Name	Mar 24 to Mar 30	Mar 25 to Mar 31	Mar 26 to Apr 1	Mar 27 to Apr 2	Mar 28 to Apr 3	Mar 29 to Apr 4	Mar 30 to Apr 5	% change from Mar 24 – Mar 30 to Mar 30 – Apr 5
NORTH WEST								
Northwestern Health Unit	433.6	417.6	376.9	401.6	400.3	362.1	344.9	-20.5%
Thunder Bay District Health Unit	118.6	117.9	112.9	121.1	121.1	121.1	119.2	+0.5%
NORTH EAST								
Algoma Public Health	290.2	262.2	283.4	286.0	287.7	300.4	314.8	+8.5%
North Bay Parry Sound District Health Unit	132.2	137.7	126.8	133.8	163.9	174.8	171.7	+29.9%
Porcupine Health Unit	144.7	169.4	200.0	215.3	211.8	237.6	236.5	+63.4%
Public Health Sudbury & Districts	165.2	169.5	173.4	169.5	163.2	176.4	183.7	+11.2%
Timiskaming Health Unit	203.6	209.5	230.2	227.2	236.1	256.8	239.0	+17.4%
EASTERN								
Ottawa Public Health	91.2	93.8	103.4	110.9	109.7	111.3	118.9	+30.4%
Eastern Ontario Health Unit	101.5	96.4	107.9	114.9	112.6	112.1	129.3	+27.4%
Hastings Prince Edward Public Health	187.5	193.3	196.7	211.2	219.3	247.6	259.8	+38.6%

Public Health Unit Name	Mar 24 to Mar 30	Mar 25 to Mar 31	Mar 26 to Apr 1	Mar 27 to Apr 2	Mar 28 to Apr 3	Mar 29 to Apr 4	Mar 30 to Apr 5	% change from Mar 24 – Mar 30 to Mar 30 – Apr 5
Kingston, Frontenac and Lennox & Addington Public Health	317.8	330.3	365.6	351.8	368.5	367.5	414.4	+30.4%
Leeds, Grenville & Lanark District Health Unit	95.0	101.7	118.9	119.5	123.4	130.0	141.7	+49.2%
Renfrew County and District Health Unit	128.1	119.8	118.9	116.2	113.4	104.2	127.2	-0.7%
CENTRAL EAST								
Durham Region Health Department	106.7	105.8	116.4	123.4	117.9	124.3	133.4	+25.0%
Haliburton, Kawartha, Pine Ridge District Health Unit	86.5	84.4	92.8	98.0	104.3	97.0	102.8	+18.8%
Peel Public Health	50.2	52.4	54.1	57.1	59.7	61.9	67.2	+33.9%
Peterborough Public Health	100.6	104.0	113.4	124.9	122.9	118.1	130.3	+29.5%
Simcoe Muskoka District Health Unit	142.9	160.0	167.6	181.6	183.0	194.0	198.3	+38.8%
York Region Public Health	84.8	85.8	86.1	89.2	91.7	92.5	97.1	+14.5%
TORONTO								
Toronto Public Health	102.1	104.2	106.0	114.7	116.3	122.6	128.4	+25.8%
SOUTH WEST								
Chatham-Kent Public Health	99.4	92.9	112.5	123.8	124.7	128.5	149.1	+50.0%
Grey Bruce Health Unit	113.5	122.6	134.0	145.3	153.8	160.1	182.2	+60.5%

Public Health Unit Name	Mar 24 to Mar 30	Mar 25 to Mar 31	Mar 26 to Apr 1	Mar 27 to Apr 2	Mar 28 to Apr 3	Mar 29 to Apr 4	Mar 30 to Apr 5	% change from Mar 24 – Mar 30 to Mar 30 – Apr 5
Huron Perth Public Health	100.5	99.2	99.2	97.8	98.5	102.6	110.8	+10.2%
Lambton Public Health	158.7	158.7	160.9	154.2	147.4	153.4	180.5	+13.7%
Middlesex-London Health Unit	113.2	113.4	123.2	126.5	131.4	130.0	145.9	+28.9%
Southwestern Public Health	111.0	111.5	120.1	118.3	124.3	118.8	131.6	+18.6%
Windsor-Essex County Health Unit	136.7	140.2	137.1	144.6	144.1	160.8	168.0	+22.9%
CENTRAL WEST								
Brant County Health Unit	90.5	97.0	108.8	120.5	132.2	142.0	153.7	+69.8%
City of Hamilton Public Health Services	146.1	144.2	152.8	156.9	159.4	167.9	189.6	+29.8%
Haldimand-Norfolk Health Unit	122.5	127.5	136.7	139.2	145.8	147.5	181.7	+48.3%
Halton Region Public Health	104.5	102.9	101.2	100.9	104.0	105.1	104.7	+0.2%
Niagara Region Public Health	105.2	111.1	117.7	121.9	117.1	119.4	131.0	+24.5%
Region of Waterloo Public Health and Emergency Services	90.2	99.3	95.0	104.1	105.9	111.2	110.4	+22.4%
Wellington-Dufferin-Guelph Public Health	123.4	127.2	128.5	133.0	133.3	138.5	139.1	+12.7%
TOTAL ONTARIO	109.5	112	116.5	122.2	123.9	128.3	136.5	+24.7%

Note: Rates are based on the sum of the daily case counts during the date ranges specified in each column.

Data Source: CCM

Table A2. Number of confirmed COVID-19 cases with a fatal outcome by date of death in the last 30 days: Ontario

Date of Death	Number of deaths
March 10, 2022	8
March 11, 2022	8
March 12, 2022	6
March 13, 2022	6
March 14, 2022	7
March 15, 2022	10
March 16, 2022	9
March 17, 2022	5
March 18, 2022	14
March 19, 2022	8
March 20, 2022	11
March 21, 2022	5
March 22, 2022	7
March 23, 2022	6
March 24, 2022	7
March 25, 2022	8
March 26, 2022	6
March 27, 2022	5
March 28, 2022	7
March 29, 2022	5
March 30, 2022	11
March 31, 2022	9

Date of Death	Number of deaths
April 1, 2022	5
April 2, 2022	2*
April 3, 2022	13*
April 4, 2022	8*
April 5, 2022	6*
April 6, 2022	2*
April 7, 2022	1*
April 8, 2022	1*

Note: Cases without a death date are not included in the table.

*Subject to reporting lags

Data Source: CCM

Citation

Ontario Agency for Health Protection and Promotion (Public Health Ontario). Epidemiologic summary: COVID-19 in Ontario – January 15, 2020 to April 8, 2022. Toronto, ON: Queen’s Printer for Ontario; 2022.

Disclaimer

This document was developed by Public Health Ontario (PHO). PHO provides scientific and technical advice to Ontario’s government, public health organizations and health care providers. PHO’s work is guided by the current best available evidence at the time of publication. The application and use of this document is the responsibility of the user. PHO assumes no liability resulting from any such application or use. This document may be reproduced without permission for non-commercial purposes only and provided that appropriate credit is given to PHO. No changes and/or modifications may be made to this document without express written permission from PHO.

For Further Information

For more information, cd@oahpp.ca.

Public Health Ontario

Public Health Ontario is an agency of the Government of Ontario dedicated to protecting and promoting the health of all Ontarians and reducing inequities in health. Public Health Ontario links public health practitioners, front-line health workers and researchers to the best scientific intelligence and knowledge from around the world.

For more information about PHO, visit publichealthontario.ca.



©Queen’s Printer for Ontario, 2022