

## DAILY EPIDEMIOLOGICAL SUMMARY

# COVID-19 in Ontario: January 15, 2020 to February 24, 2022

---

Due to changes in the Ministry of Health's [updated guidance on testing and case, contact and outbreak management](#), case counts in this report are an underestimate of the true number of individuals with COVID-19 in Ontario. In addition, data for hospitalizations, intensive care unit (ICU) admission and deaths in the most recent reporting period should be interpreted with caution due to data entry and reporting lags.

---

## Introduction

This report includes the most current information available from CCM as of **February 24, 2022**.

A [weekly summary report](#) is available with additional information to complement the daily report.

Please visit the interactive [Ontario COVID-19 Data Tool](#) to explore recent COVID-19 data by public health unit, age group, sex, and trends over time. For more information about whole genome sequencing, please see the [SARS CoV-2 Whole Genome Sequencing in Ontario report](#).

This **daily** report provides an epidemiologic summary of recent COVID-19 activity in Ontario. The change in cases is determined by taking the cumulative difference between the current day and the previous day.

In this document, the term 'change in cases' refers to cases publicly reported by the province for a given day. Data corrections or updates can result in case records being removed and or updated from past reports and may result in subset totals for updated case counts (i.e., age group, sex) differing from the overall updated case counts.

The term public health unit reported date in this document refers to the date local public health units were first notified of the case.

## Highlights

- There are a total of 1,096,357 confirmed cases of COVID-19 in Ontario reported to date.
- Compared to the previous day, this represents:
  - An increase of 2,427 confirmed cases (percent change of +1.0%)
  - An increase of 35\* deaths (percent change of -14.6%)
  - An increase of 2,427 resolved cases (percent change of -6.8%)

\* This number only includes deaths that have occurred in the last month. In addition, 4 deaths were added to the cumulative count based on data cleaning.

## Case Characteristics

**Table 1a. Summary of recent confirmed cases of COVID-19: Ontario**

	Change in cases February 23, 2022	Change in cases February 24, 2022	Percentage change February 24, 2022 compared to February 23, 2022	Cumulative case count as of February 24, 2022
Total number of cases	2,404	2,427	+1.0%	1,096,357
Number of deaths	41	35	-14.6%	12,386*
Number resolved	2,604	2,427	-6.8%	1,065,561

**Note:** The number of cases publicly reported by the province each day may not align with case counts reported to public health on a given day; public health unit reported date refers to the date local public health was first notified of the case. Data corrections or updates can result in case records being removed and or updated from past reports. The number of deaths presented in the change in cases column for each day only includes deaths that occurred in the last 30 days.

\*4 deaths were added to the cumulative total based on data cleaning.

**Data Source:** CCM

**Table 1b. Summary of recent confirmed cases of COVID-19 by age group and sex: Ontario**

	Change in cases February 23, 2022	Change in cases February 24, 2022	Cumulative case count as of February 24, 2022
Sex: Male	972	1,030	522,034
Sex: Female	1,356	1,362	567,867
Ages: 0-4	93	79	32,678
Ages: 5-11	145	157	65,863
Ages: 12-19	246	271	93,869
Ages: 20-39	850	828	420,143
Ages: 40-59	682	684	303,970
Ages: 60-79	260	280	132,199
Ages: 80 and over	127	128	47,266

**Note:** Not all cases have an age or sex reported. Data corrections or updates can result in case records being removed and/or updated from past reports and may result in subset totals (i.e., age group, sex) differing from past publicly reported case counts.

**Data Source:** CCM

**Table 2. Summary of recent confirmed cases of COVID-19 in long-term care homes: Ontario**

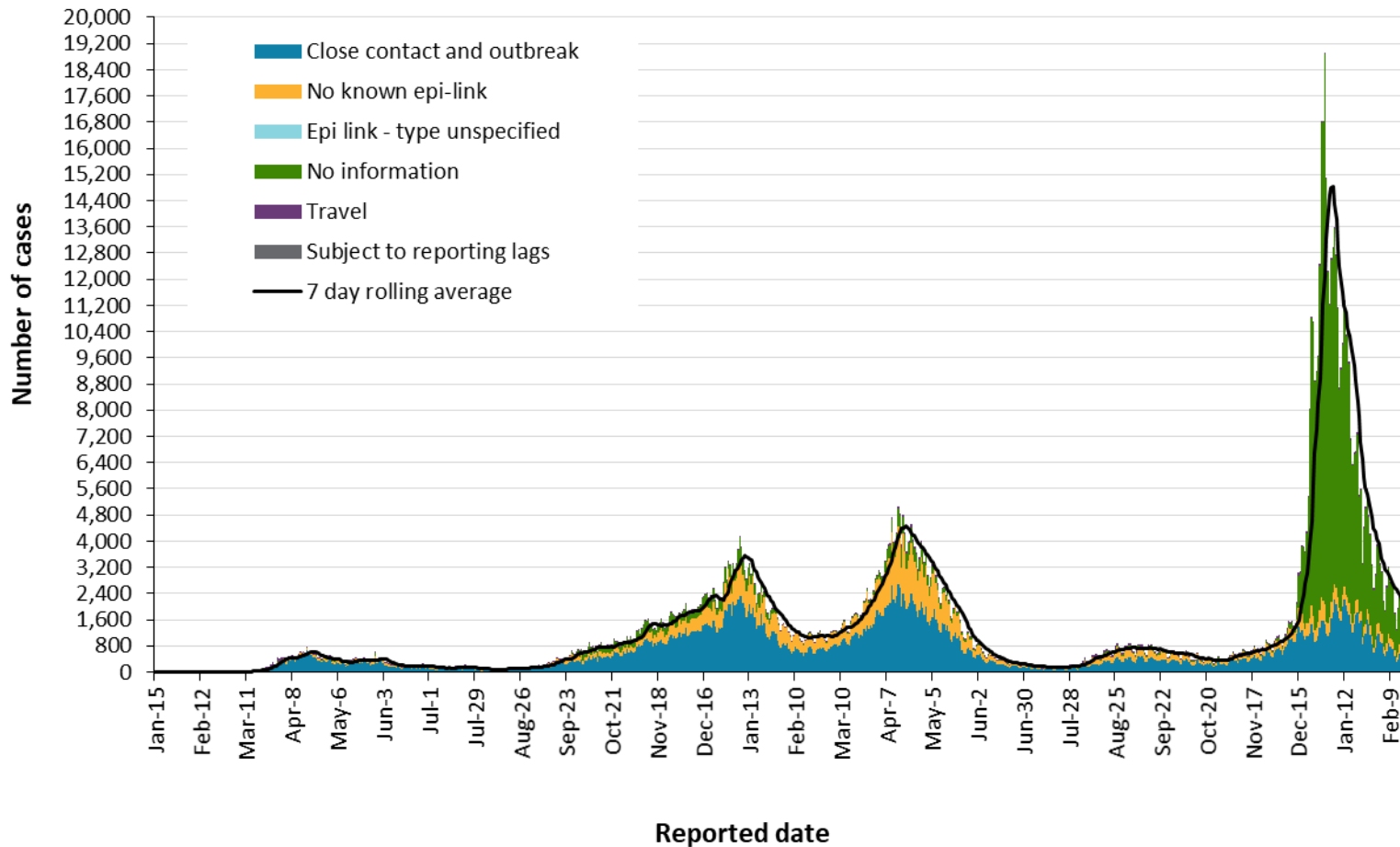
Long-term care home cases	Change in cases February 23, 2022	Change in cases February 24, 2022	Cumulative case count as of February 24, 2022
Residents	39	55	24,485
Health care workers	94	85	11,254
Deaths among residents	6	6	4,463
Deaths among health care workers	0	0	10

**Note:** Information on how long-term care home residents and health care workers are identified is available in the [technical notes](#). Also, the change in cases in these categories may represent existing case records that have been updated.

**Data Source:** CCM

# Time

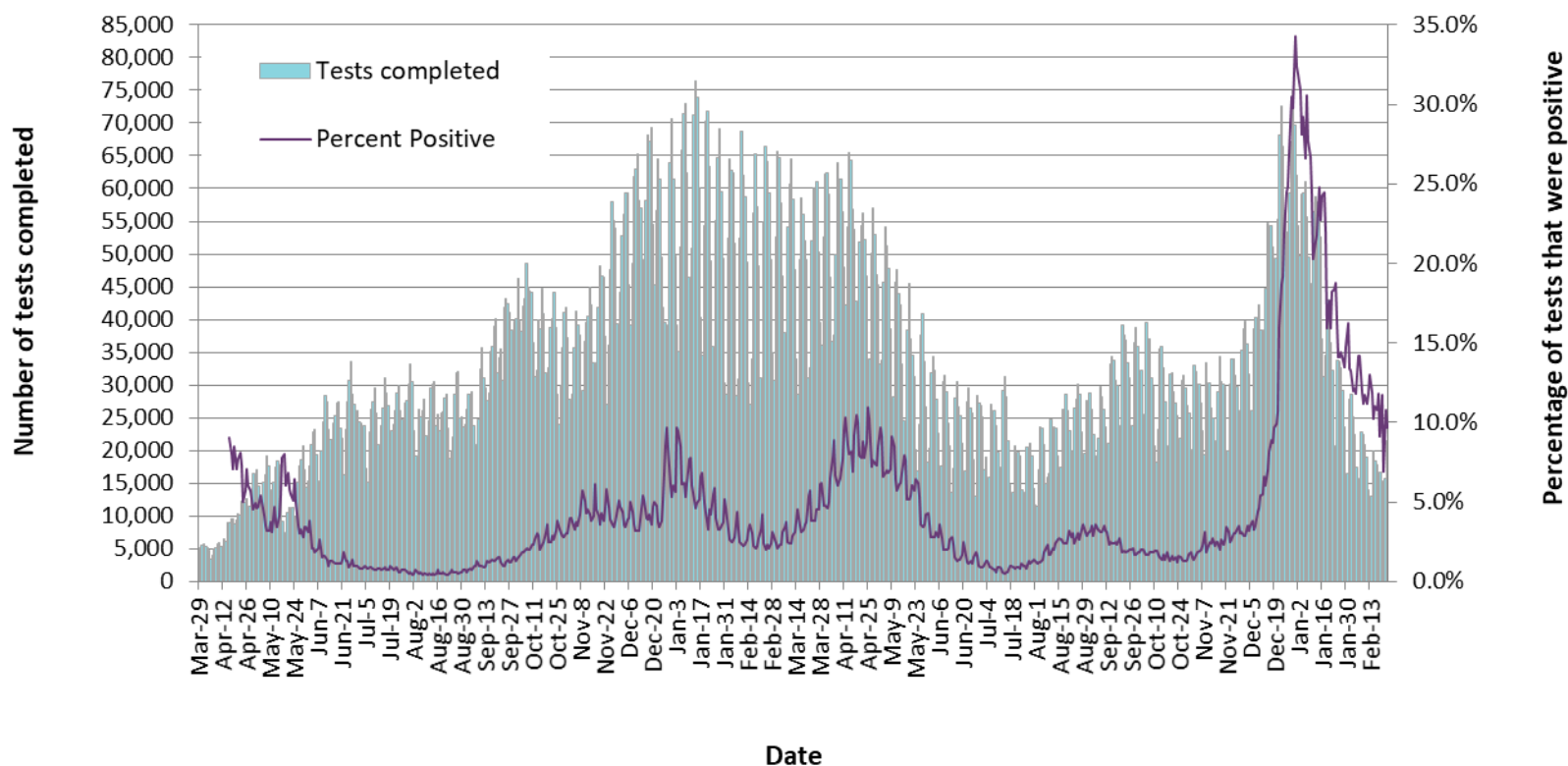
**Figure 1. Confirmed cases of COVID-19 by likely acquisition and public health unit reported date: Ontario, January 15, 2020 to February 24, 2022**



**Note:** Changes in testing eligibility went into effect on December 31, 2021, limiting access to testing and resulting in a change in the population being tested.

**Data Source:** CCM

**Figure 2. Number of COVID-19 tests completed and percent positivity: Ontario, March 29, 2020 to February 23, 2022**

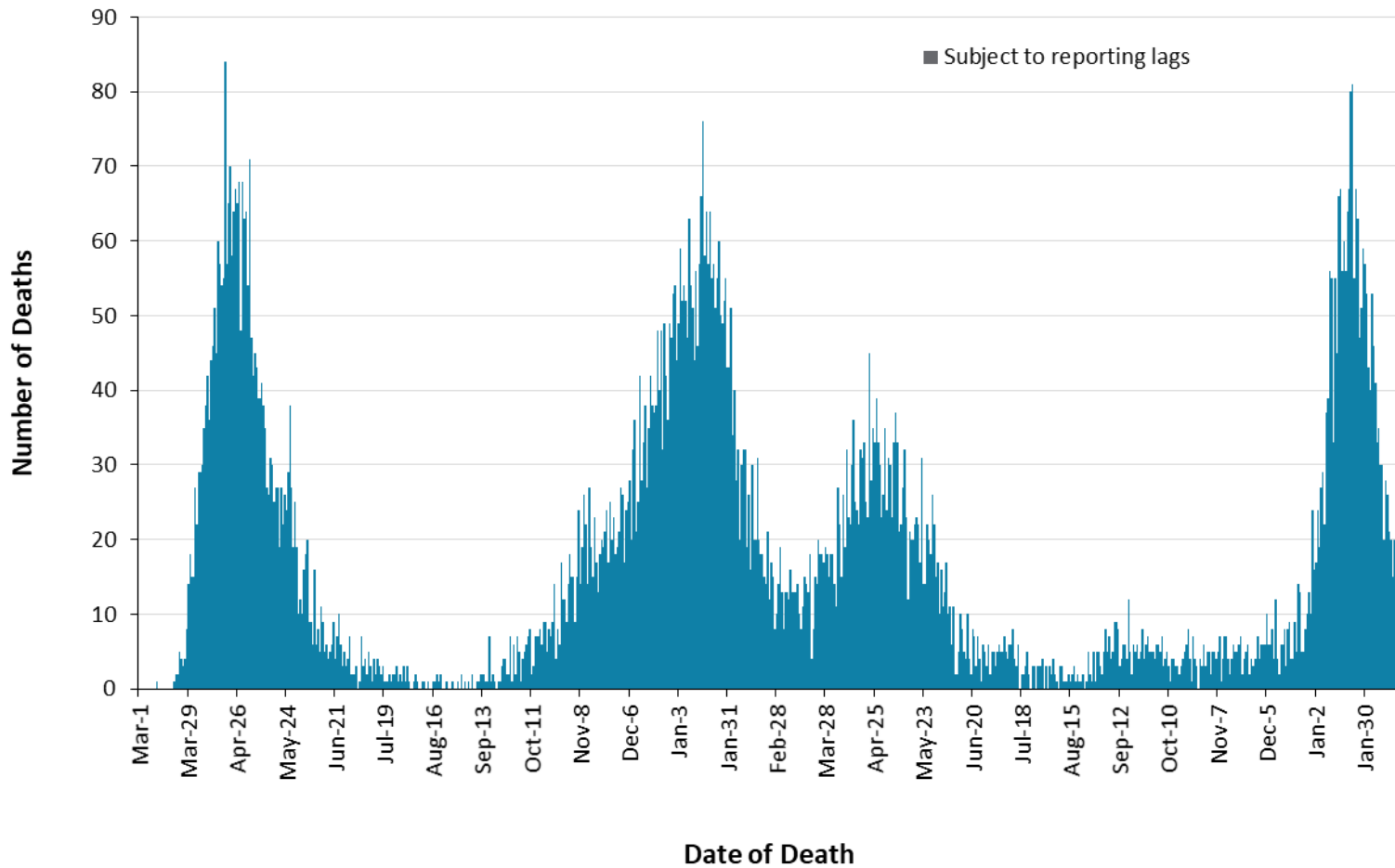


**Note:** The number of tests performed does not reflect the number of specimens or persons tested. More than one test may be performed per specimen or per person. As such, the percentage of tests that were positive does not necessarily translate to the number of specimens or persons testing positive. Changes in testing eligibility went into effect on December 31, 2021, limiting access to testing and resulting in a change in the population being tested.

**Data Source:** The Provincial COVID-19 Diagnostics Network, data reported by member microbiology laboratories.

# Severity

Figure 3. Confirmed deaths among COVID-19 cases by date of death: Ontario, March 1, 2020 to February 24, 2022



**Note:** Cases without a death date are not included in the figure.

**Data Source:** CCM

**Table 3. Confirmed cases of COVID-19 by severity: Ontario**

	Cumulative case count as of February 24, 2022	Percentage of all cases
Cumulative deaths reported (please note there may be a reporting delay for deaths)	12,386	1.1%
Deaths reported in ages: 19 and under	12	<0.1%
Deaths reported in ages: 20-39	140	<0.1%
Deaths reported in ages: 40-59	888	0.3%
Deaths reported in ages: 60-79	4,117	3.1%
Deaths reported in ages: 80 and over	7,227	15.3%
Ever in ICU	7,716	0.7%
Ever hospitalized	41,734	3.8%

**Note:** Not all cases have an age reported. Data corrections or updates can result in case records being removed and/or updated and may result in totals differing from past publicly reported case counts. Percentage of deaths reported for each age group is calculated using all cases in the age group as the denominator.

**Data Source:** CCM

## Geography

**Table 4. Summary of recent confirmed cases of COVID-19 by public health unit and region: Ontario**

Public Health Unit Name	Change in cases February 23, 2022	Change in cases February 24, 2022	Cumulative case count	Cumulative rate per 100,000 population
Northwestern Health Unit	57	111	4,716	5,809.0
Thunder Bay District Health Unit	105	67	8,550	5,421.5
<b>TOTAL NORTH WEST</b>	162	178	13,266	5,553.2
Algoma Public Health	58	62	4,967	4,215.0
North Bay Parry Sound District Health Unit	56	44	3,683	2,848.2
Porcupine Health Unit	58	67	5,377	6,325.9
Public Health Sudbury & Districts	99	74	10,880	5,300.7
Timiskaming Health Unit	5	5	1,132	3,340.7
<b>TOTAL NORTH EAST</b>	276	252	26,039	4,557.9
Ottawa Public Health	187	131	62,302	5,972.6
Eastern Ontario Health Unit	33	39	13,541	6,273.1
Hastings Prince Edward Public Health	64	46	6,831	3,952.4
Kingston, Frontenac and Lennox & Addington Public Health	80	101	9,998	4,778.5
Leeds, Grenville & Lanark District Health Unit	50	38	6,668	3,705.6
Renfrew County and District Health Unit	18	16	3,303	3,045.0
<b>TOTAL EASTERN</b>	432	371	102,643	5,319.8



Public Health Unit Name	Change in cases February 23, 2022	Change in cases February 24, 2022	Cumulative case count	Cumulative rate per 100,000 population
Durham Region Health Department	107	106	52,716	7,409.9
Haliburton, Kawartha, Pine Ridge District Health Unit	29	34	6,996	3,668.1
Peel Public Health	195	130	171,574	10,972.7
Peterborough Public Health	26	50	5,544	3,743.0
Simcoe Muskoka District Health Unit	113	134	35,067	5,800.9
York Region Public Health	104	94	97,811	8,149.1
<b>TOTAL CENTRAL EAST</b>	574	548	369,708	8,366.9
Toronto Public Health	306	357	277,451	9,284.2
<b>TOTAL TORONTO</b>	306	357	277,451	9,284.2
Chatham-Kent Public Health	26	23	6,780	6,359.0
Grey Bruce Health Unit	22	45	6,163	3,498.7
Huron Perth Public Health	18	24	5,654	3,866.2
Lambton Public Health	8	29	9,648	7,255.7
Middlesex-London Health Unit	85	75	31,528	6,174.6
Southwestern Public Health	32	36	11,086	5,064.2
Windsor-Essex County Health Unit	75	103	36,918	8,566.8
<b>TOTAL SOUTH WEST</b>	266	335	107,777	6,257.2
Brant County Health Unit	16	30	9,807	6,386.5
City of Hamilton Public Health Services	61	72	48,150	8,277.1
Haldimand-Norfolk Health Unit	32	14	6,979	5,815.4

Public Health Unit Name	Change in cases February 23, 2022	Change in cases February 24, 2022	Cumulative case count	Cumulative rate per 100,000 population
Halton Region Public Health	73	60	42,085	6,892.7
Niagara Region Public Health	105	81	33,839	7,024.5
Region of Waterloo Public Health and Emergency Services	61	73	40,301	6,658.8
Wellington-Dufferin-Guelph Public Health	40	56	18,312	5,869.3
<b>TOTAL CENTRAL WEST</b>	<b>388</b>	<b>386</b>	<b>199,473</b>	<b>6,962.9</b>
<b>TOTAL ONTARIO</b>	<b>2,404</b>	<b>2,427</b>	<b>1,096,357</b>	<b>7,441.0</b>

**Notes:** Health units with data corrections or updates could result in records being removed from totals, leading to negative or zero counts.

**Data Source:** CCM

## Outbreaks

**Table 5. Summary of recent confirmed COVID-19 outbreaks reported in long-term care homes, retirement homes and hospitals by status: Ontario**

Institution type	Change in outbreaks February 23, 2022	Change in outbreaks February 24, 2022	Number of ongoing outbreaks	Cumulative number of outbreaks reported
Long-term care homes	4	8	89	2,139
Retirement homes	6	3	75	1,447
Hospitals	2	3	33	1,128

**Note:** Ongoing outbreaks are those that are reported in CCM as 'Open' and without a 'Declared Over Date' recorded. The start of the outbreak is determined by the onset date of first case, or if missing the outbreak reported date, or else if that is also missing, then the outbreak created date.

**Data Source:** CCM

# Technical Notes

## Data Sources

- The data for this report were based on information successfully extracted from the Public Health Case and Contact Management Solution (CCM) for all PHUs by PHO as of **February 24, 2022 at 1 p.m.** for cases reported from May 1, 2021 onwards and as of **February 24, 2022 at 9 a.m.** for cases reported up to April 30, 2021.
- CCM is a dynamic disease reporting system, which allows ongoing updates to data previously entered. As a result, data extracted from CCM represent a snapshot at the time of extraction and may differ from previous or subsequent reports.
- Ontario population estimate data were sourced from Statistics Canada. Population estimates 2001-2020: Table 1 annual population estimates by age and sex for July 1, 2001 to 2020, health regions, Ontario [unpublished data table]. Ottawa, ON: Government of Canada; 2021 [received April 22, 2021].
- COVID-19 test data were based on information from The Provincial COVID-19 Diagnostics Network, reported by member microbiology laboratories.

## Data Caveats

- Due to changes in the availability of testing, driven by increasing COVID-19 cases related to the Omicron variant, case counts in this report are an underestimate of the true number of individuals with COVID-19 in Ontario. As such, data should be interpreted with caution.
- The data only represent cases reported to public health units and recorded in CCM. As a result, all counts will be subject to varying degrees of underreporting due to a variety of factors, such as disease awareness and medical care seeking behaviours, which may depend on severity of illness, clinical practice, changes in laboratory testing, and reporting behaviours.
- Data cleaning for older cases is incorporated on Mondays and Thursdays and may impact the case count published on Tuesdays and Fridays.
- Lags in CCM data entry due to weekend staffing may result in lower case counts than would otherwise be recorded.
- Only cases meeting the confirmed case classification as listed in the [MOH Case Definition – Coronavirus Disease \(COVID-19\) document](#) are included in the report counts from CCM.
- Cases of confirmed reinfection, as defined in the provincial case definitions, are counted as unique investigations.
- Case classification information may be updated for individuals with a positive result issued from a point-of-care assays.
- The number of tests performed does not reflect the number of specimens or persons tested. More than one test may be performed per specimen or per person. As such, the percentage of tests that were positive does not necessarily translate to the number of specimens or persons testing positive.
- Reported date is the date the case was reported to the public health unit.

- Resolved cases are determined only for COVID-19 cases that have not died. Cases that have died are considered fatal and not resolved. The following cases are classified as resolved:
  - Cases that are reported as ‘recovered’ in CCM based on local public health unit assessment
  - Cases that are not hospitalized and are 14 days past their symptom onset date or specimen collection date (where symptom onset date is not known)
  - Cases that are currently hospitalized (no hospital end date entered) and have a status of ‘closed’ in CCM (indicating public health unit follow-up is complete) and are 14 days past their symptom onset date or specimen collection date
- Hospitalization includes all cases hospitalized (or that had their hospital stay extended) because of COVID-19. It includes cases that have been discharged from hospital as well as cases that are currently hospitalized. Includes Intensive Care Unit (ICU) cases but not emergency room visits. Hospitalizations were identified by a reported hospital admission date or reported ‘Yes’ for hospitalization/ICU
- ICU admission includes all cases for which an ICU admission date was reported at the time of data extraction. It is a subset of the count of hospitalized cases. It includes cases that have been treated or that are currently being treated in an ICU.
- Orientation of case counts by geography is based on the permanent health unit. This is equivalent to the diagnosing health unit (DHU) in iPHIS. DHU refers to the case's public health unit of residence at the time of illness onset and not necessarily the location of exposure. Cases for which the DHU was reported as MOH-PHO (to signify a case that is not a resident of Ontario) have been excluded from the analyses.
- Male/Female information presented in this report are sourced from the Sex field in CCM and are intended to represent sex assigned at birth. On October 14, 2021 changes were made in CCM to enable reporting on the Sex field where these data are supplemented by archived Male/Female information previously entered in the Gender field.
- Likely source of acquisition is determined by examining the epidemiologic link and epidemiologic link status fields in CCM. If no epidemiologic link is identified in those fields the risk factor fields are examined to determine whether a case travelled, was associated with a confirmed outbreak, was a contact of a case, had no known epidemiological link (sporadic community transmission) or was reported to have an unknown source/no information was reported. Some cases may have no information reported if the case is untraceable, was lost to follow-up or referred to FNIHB. Cases with multiple risk factors were assigned to a single likely acquisition source group which was determined hierarchically in the following order:
  - For cases with an episode date *on or after* April 1, 2020: Outbreak-associated > close contact of a confirmed case > travel > no known epidemiological link > information missing or unknown
  - For cases with an episode date *before* April 1, 2020: Travel > outbreak-associated > close contact of a confirmed case > no known epidemiological link > information missing or unknown
  - Case episode date represents an estimate of disease onset. This date is calculated based on the earliest date of symptom onset, specimen collection/test date, or the date reported to the public health unit

- Deaths are determined by using the outcome field in CCM. Any case marked 'Fatal' is included in the deaths data. The CCM field Type of Death is not used to further categorize the data.
  - If the date of death is missing the outcome date field is used as a proxy for cases marked as 'Fatal' in the outcome field.
- COVID-19 cases from CCM for which the Classification and/or Disposition was reported as ENTERED IN ERROR, DOES NOT MEET DEFINITION, IGNORE, DUPLICATE or any variation on these values have been excluded. The provincial case count for COVID-19 may include some duplicate records, if these records were not identified and resolved.
- Ongoing outbreaks are those that are reported in CCM as 'Open' and without a 'Declared Over Date' recorded. Closed outbreaks are 'Closed' or have a 'Declared Over Date' recorded in CCM or where the outbreak start date (determined by the onset date of first case, or if missing the reported date, or if missing the created date) is more than 5 months from the current date, even for outbreaks where the outbreak status value selected in CCM is 'OPEN'.
- 'Long-term care home residents' includes cases that reported 'Yes' to the risk factor 'Resident of a long-term care home'; or 'Yes' to the risk factor 'Resident of nursing home or other chronic care facility' and reported to be part of an outbreak assigned as a long-term care home (via the Outbreak number or case comments field); or were reported to be part of an outbreak assigned as a long-term care home (via the outbreak number or case comments field) with an age over 70 years and did not report 'No' to the risk factors 'Resident of long-term care home' or 'Resident of nursing home or other chronic care facility'. 'Long-term care home residents' excludes cases that reported 'Yes' to any of the health care worker occupational risk factors.
- The 'health care workers' variable includes cases that reported 'Yes' to any of the occupation of health care worker, doctor, nurse, dentist, dental hygienist, midwife, other medical technicians, personal support worker, respiratory therapist, first responder.
- 'Health care workers associated with long-term care outbreaks' includes 'health care workers' reported to be part of an outbreak assigned as a long-term care home (via the outbreak number or case comments field). Excludes cases that reported 'Yes' to risk factors 'Resident of long-term care home' or 'Resident of nursing home or other chronic care facility' and 'Yes' to the calculated 'health care workers' variable.
- Percent change is calculated by taking the difference between the current period (i.e., daily count or sum of the daily count over a 7-day period) and previous period (i.e., daily count or sum of the daily count over a 7-day period), divided by the previous period.

## Appendix A

**Table A1. Weekly rates of confirmed COVID-19 cases per 100,000 population over recent rolling 7-day periods, by reported date and public health unit: Ontario, February 9, 2022 to February 21, 2022**

Public Health Unit Name	Feb 9 to Feb 15	Feb 10 to Feb 16	Feb 11 to Feb 17	Feb 12 to Feb 18	Feb 13 to Feb 19	Feb 14 to Feb 20	Feb 15 to Feb 21	% change from Feb 9 – Feb 15 to Feb 15 – Feb 21
<b>NORTH WEST</b>								
Northwestern Health Unit	474.2	459.4	526.0	492.7	492.7	490.2	445.9	-6.0%
Thunder Bay District Health Unit	307.5	318.3	320.2	299.9	320.9	325.3	310.7	+1.0%
<b>NORTH EAST</b>								
Algoma Public Health	273.3	282.6	286.0	286.8	305.5	322.5	314.8	+15.2%
North Bay Parry Sound District Health Unit	159.3	171.7	174.8	178.6	180.2	198.8	184.1	+15.6%
Porcupine Health Unit	396.5	408.2	405.9	396.5	415.3	408.2	398.8	+0.6%
Public Health Sudbury & Districts	220.2	206.1	207.1	180.7	176.9	192.4	192.4	-12.6%
Timiskaming Health Unit	129.9	126.9	100.3	76.7	73.8	73.8	64.9	-50.0%
<b>EASTERN</b>								
Ottawa Public Health	105.7	108.2	108.2	109.2	107.5	105.0	95.8	-9.4%
Eastern Ontario Health Unit	118.1	112.6	102.4	100.5	97.7	92.2	86.6	-26.7%
Hastings Prince Edward Public Health	160.9	163.7	165.5	159.7	159.1	158.5	142.3	-11.6%

Public Health Unit Name	Feb 9 to Feb 15	Feb 10 to Feb 16	Feb 11 to Feb 17	Feb 12 to Feb 18	Feb 13 to Feb 19	Feb 14 to Feb 20	Feb 15 to Feb 21	% change from Feb 9 – Feb 15 to Feb 15 – Feb 21
Kingston, Frontenac and Lennox & Addington Public Health	171.1	180.7	184.0	190.2	201.7	195.0	187.8	+9.8%
Leeds, Grenville & Lanark District Health Unit	161.2	151.7	136.2	130.6	132.3	138.4	123.9	-23.1%
Renfrew County and District Health Unit	119.8	105.1	98.6	103.3	88.5	84.8	75.6	-36.9%
<b>CENTRAL EAST</b>								
Durham Region Health Department	88.0	84.6	81.0	80.8	76.5	76.6	76.2	-13.4%
Haliburton, Kawartha, Pine Ridge District Health Unit	122.7	122.7	114.8	112.2	113.3	109.1	106.4	-13.3%
Peel Public Health	73.4	68.9	62.4	56.1	54.1	53.4	48.9	-33.4%
Peterborough Public Health	104.6	109.4	105.3	102.6	104.6	96.5	94.5	-9.7%
Simcoe Muskoka District Health Unit	132.2	132.3	134.5	117.8	115.5	115.8	100.2	-24.2%
York Region Public Health	66.5	60.1	56.2	55.1	50.7	51.4	48.7	-26.8%
<b>TORONTO</b>								
Toronto Public Health	72.9	66.6	65.8	61.1	59.9	59.8	58.0	-20.4%
<b>SOUTH WEST</b>								
Chatham-Kent Public Health	194.1	202.6	183.8	159.4	163.2	156.6	136.0	-29.9%
Grey Bruce Health Unit	122.1	124.3	122.6	120.9	120.4	114.1	100.5	-17.7%

Public Health Unit Name	Feb 9 to Feb 15	Feb 10 to Feb 16	Feb 11 to Feb 17	Feb 12 to Feb 18	Feb 13 to Feb 19	Feb 14 to Feb 20	Feb 15 to Feb 21	% change from Feb 9 – Feb 15 to Feb 15 – Feb 21
Huron Perth Public Health	107.4	101.9	92.3	79.3	85.5	82.7	80.0	-25.5%
Lambton Public Health	161.7	160.9	145.9	139.9	134.6	127.8	124.8	-22.8%
Middlesex-London Health Unit	117.7	114.4	115.7	100.9	93.2	93.8	88.3	-25.0%
Southwestern Public Health	101.0	98.2	95.9	85.9	80.9	81.3	79.5	-21.3%
Windsor-Essex County Health Unit	151.8	137.8	126.2	129.5	122.1	115.8	117.0	-22.9%
<b>CENTRAL WEST</b>								
Brant County Health Unit	92.5	91.8	89.9	80.1	74.2	73.6	68.4	-26.1%
City of Hamilton Public Health Services	92.7	88.0	85.1	82.2	80.1	77.5	71.9	-22.4%
Haldimand-Norfolk Health Unit	118.3	110.8	117.5	107.5	100.0	102.5	105.8	-10.6%
Halton Region Public Health	78.0	74.2	66.3	61.6	53.9	52.6	49.3	-36.8%
Niagara Region Public Health	127.0	122.7	118.5	114.6	112.1	105.7	100.5	-20.9%
Region of Waterloo Public Health and Emergency Services	86.2	79.3	75.5	68.6	67.6	65.9	68.2	-20.9%
Wellington-Dufferin-Guelph Public Health	91.0	84.6	73.1	69.9	69.2	67.0	62.8	-31.0%
<b>TOTAL ONTARIO</b>	<b>105.7</b>	<b>101.9</b>	<b>98.9</b>	<b>93.7</b>	<b>91.8</b>	<b>91.0</b>	<b>86.2</b>	<b>-18.4%</b>

**Note:** Rates are based on the sum of the daily case counts during the date ranges specified in each column.

**Data Source:** CCM



**Table A2. Number of confirmed COVID-19 cases with a fatal outcome by date of death in the last 30 days: Ontario**

Date of Death	Number of deaths
January 26, 2022	63
January 27, 2022	47
January 28, 2022	51
January 29, 2022	59
January 30, 2022	57
January 31, 2022	53
February 1, 2022	43
February 2, 2022	40
February 3, 2022	53
February 4, 2022	46
February 5, 2022	41
February 6, 2022	33
February 7, 2022	35
February 8, 2022	30
February 9, 2022	30
February 10, 2022	20
February 11, 2022	28
February 12, 2022	26
February 13, 2022	21
February 14, 2022	20
February 15, 2022	15
February 16, 2022	20

Date of Death	Number of deaths
February 17, 2022	13
February 18, 2022	21*
February 19, 2022	17*
February 20, 2022	15*
February 21, 2022	15*
February 22, 2022	9*
February 23, 2022	5*
February 24, 2022	0*

**Note:** Cases without a death date are not included in the table.

\*Subject to reporting lags

**Data Source:** CCM

## Citation

Ontario Agency for Health Protection and Promotion (Public Health Ontario). Epidemiologic summary: COVID-19 in Ontario – January 15, 2020 to February 24, 2022. Toronto, ON: Queen’s Printer for Ontario; 2022.

## Disclaimer

This document was developed by Public Health Ontario (PHO). PHO provides scientific and technical advice to Ontario’s government, public health organizations and health care providers. PHO’s work is guided by the current best available evidence at the time of publication. The application and use of this document is the responsibility of the user. PHO assumes no liability resulting from any such application or use. This document may be reproduced without permission for non-commercial purposes only and provided that appropriate credit is given to PHO. No changes and/or modifications may be made to this document without express written permission from PHO.

## For Further Information

For more information, [cd@oahpp.ca](mailto:cd@oahpp.ca).

## Public Health Ontario

Public Health Ontario is an agency of the Government of Ontario dedicated to protecting and promoting the health of all Ontarians and reducing inequities in health. Public Health Ontario links public health practitioners, front-line health workers and researchers to the best scientific intelligence and knowledge from around the world.

For more information about PHO, visit [publichealthontario.ca](http://publichealthontario.ca).



©Queen’s Printer for Ontario, 2022