

DAILY EPIDEMIOLOGICAL SUMMARY

COVID-19 in Ontario: January 15, 2020 to January 23, 2022

This report includes the most current information available from CCM as of **January 23, 2022**.

A [weekly summary report](#) is available with additional information to complement the daily report.

Please visit the interactive [Ontario COVID-19 Data Tool](#) to explore recent COVID-19 data by public health unit, age group, sex, and trends over time. For more information about whole genome sequencing, please see the [SARS CoV-2 Whole Genome Sequencing in Ontario report](#).

This **daily** report provides an epidemiologic summary of recent COVID-19 activity in Ontario. The change in cases is determined by taking the cumulative difference between the current day and the previous day.

Highlights

- There are a total of 1,001,455 confirmed cases of COVID-19 in Ontario reported to date.
- Compared to the previous day, this represents:
 - An increase of 4,790 confirmed cases (percent change of -17.9%)
 - An increase of 37* deaths (percent change of -35.1%)
 - An increase of 6,924 resolved cases (percent change of -27.0%)

* This number only includes deaths that have occurred in the last month. In addition, there was 1 death that occurred more than one month ago removed from the cumulative count based on data cleaning.

Due to changes in the availability of testing, driven by increasing COVID-19 cases related to the Omicron variant, case counts in this report are an underestimate of the true number of individuals with COVID-19 in Ontario. In addition, data for hospitalizations, intensive care unit (ICU) admission and deaths in the most recent reporting period should be interpreted with caution due to data entry and reporting lags. For more information, please see our data caveats and check out [our blog](#). Effective, December 31, 2021, the Ministry of Health updated its eligibility requirements for molecular testing (PCR or rapid molecular testing). Details can be found in the Ministry of Health [Interim Guidance](#).

In this document, the term ‘change in cases’ refers to cases publicly reported by the province for a given day. Data corrections or updates can result in case records being removed and or updated from past reports and may result in subset totals for updated case counts (i.e., age group, sex) differing from the overall updated case counts.

The term public health unit reported date in this document refers to the date local public health units were first notified of the case.

Case Characteristics

Table 1a. Summary of recent confirmed cases of COVID-19: Ontario

| | Change in cases January 22, 2022 | Change in cases January 23, 2022 | Percentage change January 23, 2022 compared to January 22, 2022 | Cumulative case count as of January 23, 2022 |
|--------------------------|--|--|--|---|
| Total number of cases | 5,833 | 4,790 | -17.9% | 1,001,455 |
| Number of deaths | 57 | 37 | -35.1% | 11,004* |
| Number resolved | 9,490 | 6,924 | -27.0% | 924,947 |

Note: The number of cases publicly reported by the province each day may not align with case counts reported to public health on a given day; public health unit reported date refers to the date local public health was first notified of the case. Data corrections or updates can result in case records being removed and or updated from past reports. The number of deaths presented in the change in cases column for each day only includes deaths that occurred in the last 30 days.

*1 death was removed from the cumulative total based on data cleaning.

Data Source: CCM

Table 1b. Summary of recent confirmed cases of COVID-19 by age group and sex: Ontario

| | Change in cases January 22, 2022 | Change in cases January 23, 2022 | Cumulative case count as of January 23, 2022 |
|-------------------|-------------------------------------|-------------------------------------|---|
| Sex: Male | 2,439 | 2,073 | 481,945 |
| Sex: Female | 3,328 | 2,654 | 514,705 |
| Ages: 0-4 | 165 | 184 | 28,903 |
| Ages: 5-11 | 320 | 226 | 59,861 |
| Ages: 12-19 | 340 | 252 | 87,274 |
| Ages: 20-39 | 2,176 | 1,696 | 385,844 |
| Ages: 40-59 | 1,595 | 1,298 | 278,954 |
| Ages: 60-79 | 770 | 682 | 120,106 |
| Ages: 80 and over | 454 | 451 | 40,224 |

Note: Not all cases have an age or sex reported. Data corrections or updates can result in case records being removed and/or updated from past reports and may result in subset totals (i.e., age group, sex) differing from past publicly reported case counts.

Data Source: CCM

Table 2. Summary of recent confirmed cases of COVID-19 in long-term care homes: Ontario

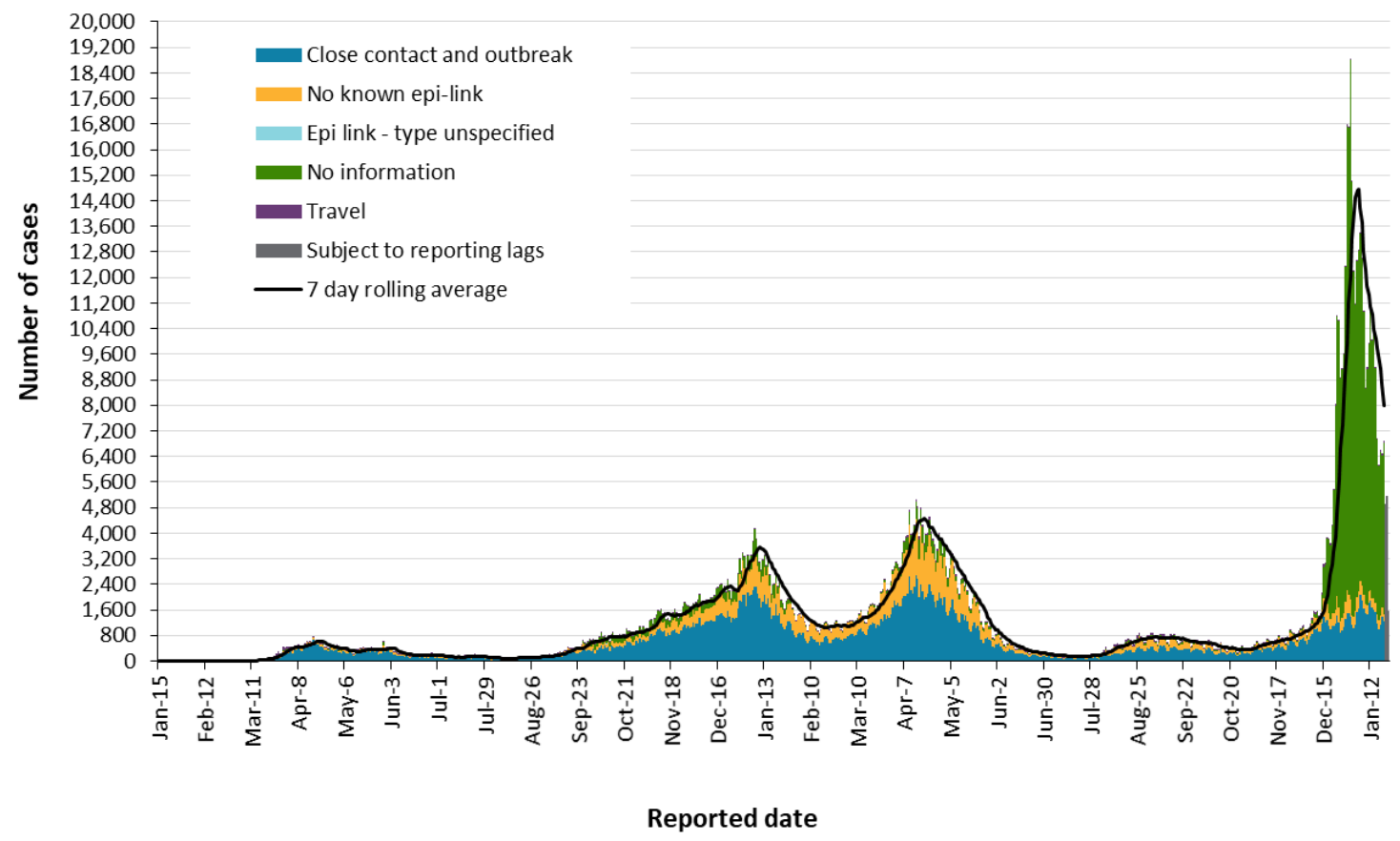
| Long-term care home cases | Change in cases January 22, 2022 | Change in cases January 23, 2022 | Cumulative case count as of January 23, 2022 |
|----------------------------------|--|--|---|
| Residents | 261 | 177 | 20,708 |
| Health care workers | 68 | 26 | 9,102 |
| Deaths among residents | 7 | 2 | 4,183 |
| Deaths among health care workers | 0 | 0 | 10 |

Note: Information on how long-term care home residents and health care workers are identified is available in the [technical notes](#). Also, the change in cases in these categories may represent existing case records that have been updated.

Data Source: CCM

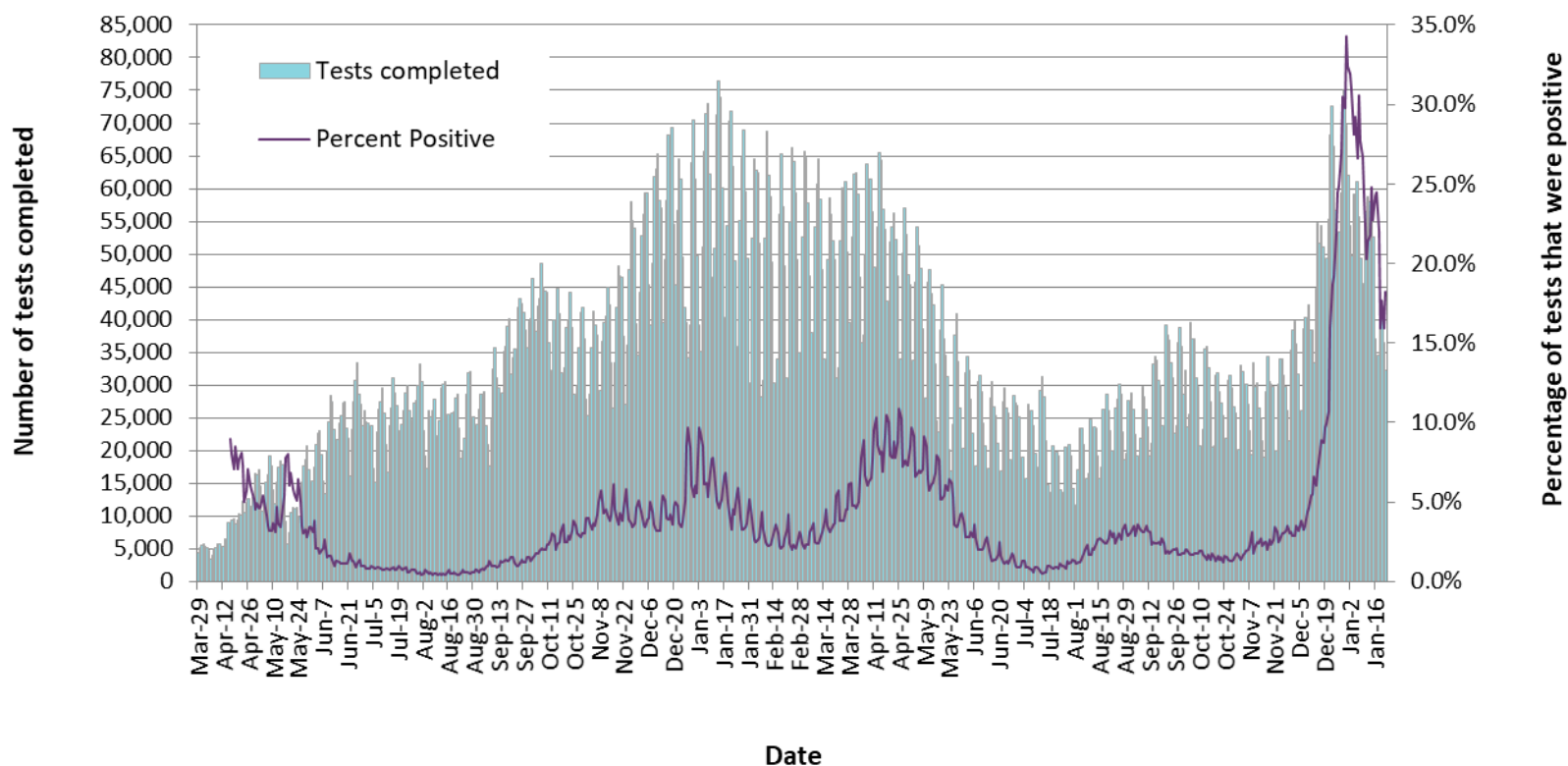
Time

Figure 1. Confirmed cases of COVID-19 by likely acquisition and public health unit reported date: Ontario, January 15, 2020 to January 23, 2022



Note: Changes in testing eligibility went into effect on December 31, 2021, limiting access to testing and resulting in a change in the population being tested.
Data Source: CCM
COVID-19 in Ontario: January 15, 2020 to January 23, 2022

Figure 2. Number of COVID-19 tests completed and percent positivity: Ontario, March 29, 2020 to January 22, 2022

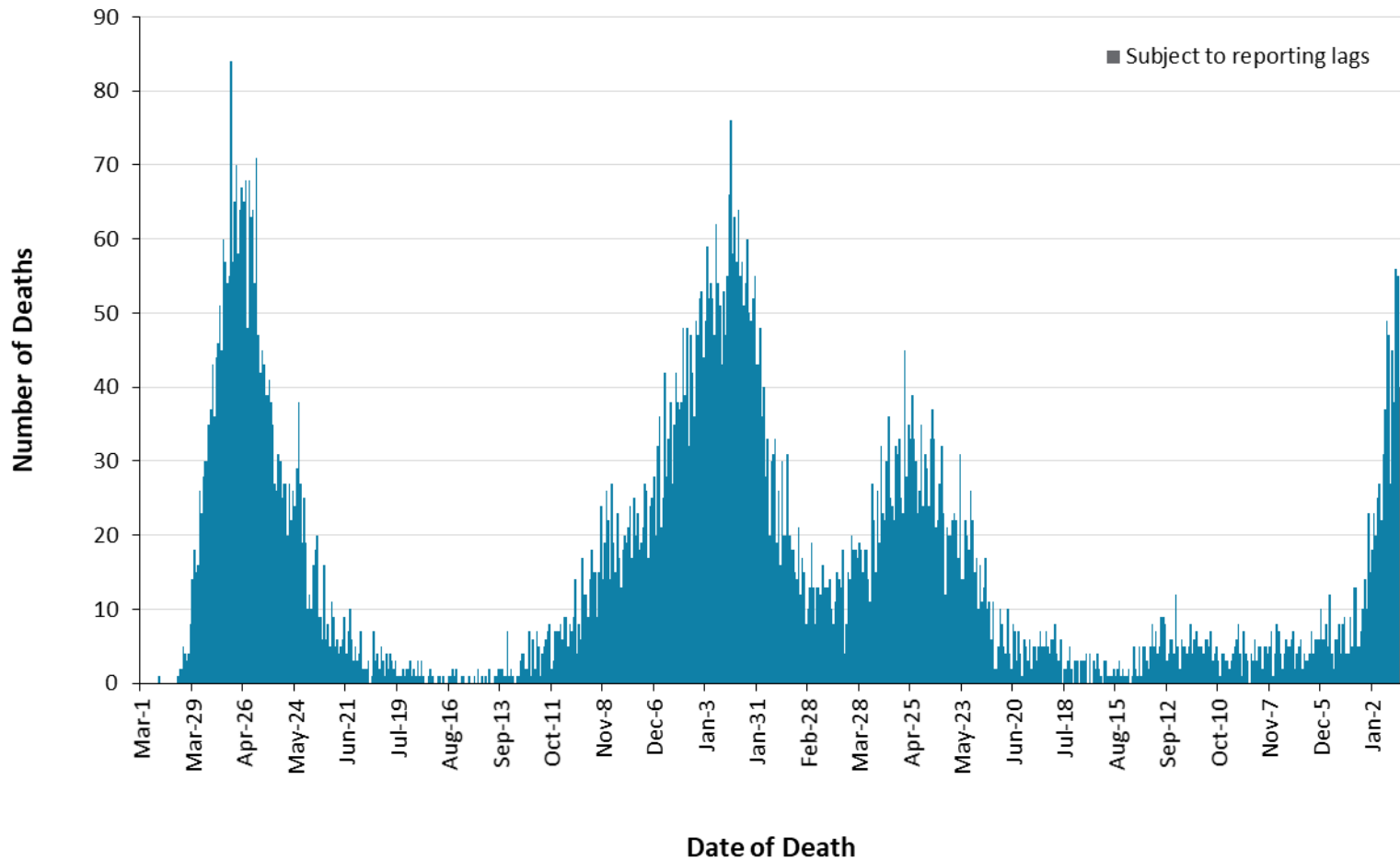


Note: The number of tests performed does not reflect the number of specimens or persons tested. More than one test may be performed per specimen or per person. As such, the percentage of tests that were positive does not necessarily translate to the number of specimens or persons testing positive. Changes in testing eligibility went into effect on December 31, 2021, limiting access to testing and resulting in a change in the population being tested.

Data Source: The Provincial COVID-19 Diagnostics Network, data reported by member microbiology laboratories.

Severity

Figure 3. Confirmed deaths among COVID-19 cases by date of death: Ontario, March 1, 2020 to January 23, 2022



Note: Cases without a death date are not included in the figure.

Data Source: CCM

Table 3. Confirmed cases of COVID-19 by severity: Ontario

| | Cumulative case count as of January 23, 2022 | Percentage of all cases |
|--|---|----------------------------|
| Cumulative deaths reported (please note there may be a reporting delay for deaths) | 11,004 | 1.1% |
| Deaths reported in ages: 19 and under | 10 | <0.1% |
| Deaths reported in ages: 20-39 | 120 | <0.1% |
| Deaths reported in ages: 40-59 | 796 | 0.3% |
| Deaths reported in ages: 60-79 | 3,666 | 3.1% |
| Deaths reported in ages: 80 and over | 6,410 | 15.9% |
| Ever in ICU | 7,030 | 0.7% |
| Ever hospitalized | 37,173 | 3.7% |

Note: Not all cases have an age reported. Data corrections or updates can result in case records being removed and/or updated and may result in totals differing from past publicly reported case counts. Percentage of deaths reported for each age group is calculated using all cases in the age group as the denominator.

Data Source: CCM

Geography

Table 4. Summary of recent confirmed cases of COVID-19 by public health unit and region: Ontario

| Public Health Unit Name | Change in cases January 22, 2022 | Change in cases January 23, 2022 | Cumulative case count | Cumulative rate per 100,000 population |
|--|----------------------------------|----------------------------------|-----------------------|--|
| Northwestern Health Unit | 98 | 29 | 2,987 | 3,679.3 |
| Thunder Bay District Health Unit | 87 | 68 | 6,239 | 3,956.1 |
| TOTAL NORTH WEST | 185 | 97 | 9,226 | 3,862.0 |
| Algoma Public Health | 73 | 28 | 3,334 | 2,829.3 |
| North Bay Parry Sound District Health Unit | 60 | 25 | 2,580 | 1,995.2 |
| Porcupine Health Unit | 30 | 43 | 4,037 | 4,749.4 |
| Public Health Sudbury & Districts | 147 | 57 | 8,475 | 4,129.0 |
| Timiskaming Health Unit | 4 | 7 | 918 | 2,709.2 |
| TOTAL NORTH EAST | 314 | 160 | 19,344 | 3,386.0 |
| Ottawa Public Health | 307 | 339 | 55,896 | 5,358.5 |
| Eastern Ontario Health Unit | 88 | 73 | 12,016 | 5,566.6 |
| Hastings Prince Edward Public Health | 34 | 33 | 5,449 | 3,152.8 |
| Kingston, Frontenac and Lennox & Addington Public Health | 61 | 34 | 8,330 | 3,981.3 |
| Leeds, Grenville & Lanark District Health Unit | 40 | 40 | 5,283 | 2,935.9 |
| Renfrew County and District Health Unit | 28 | 52 | 2,604 | 2,400.6 |
| TOTAL EASTERN | 558 | 571 | 89,578 | 4,642.6 |

| Public Health Unit Name | Change in cases January 22, 2022 | Change in cases January 23, 2022 | Cumulative case count | Cumulative rate per 100,000 population |
|---|----------------------------------|----------------------------------|-----------------------|--|
| Durham Region Health Department | 237 | 177 | 48,731 | 6,849.8 |
| Haliburton, Kawartha, Pine Ridge District Health Unit | 85 | 98 | 5,759 | 3,019.5 |
| Peel Public Health | 884 | 690 | 161,762 | 10,345.2 |
| Peterborough Public Health | 38 | 44 | 4,720 | 3,186.6 |
| Simcoe Muskoka District Health Unit | 190 | 116 | 30,451 | 5,037.3 |
| York Region Public Health | 467 | 384 | 92,800 | 7,731.6 |
| TOTAL CENTRAL EAST | 1,901 | 1,509 | 344,223 | 7,790.2 |
| Toronto Public Health | 1,022 | 886 | 262,088 | 8,770.2 |
| TOTAL TORONTO | 1,022 | 886 | 262,088 | 8,770.2 |
| Chatham-Kent Public Health | 39 | 56 | 5,654 | 5,302.9 |
| Grey Bruce Health Unit | 27 | 37 | 5,173 | 2,936.7 |
| Huron Perth Public Health | 46 | 33 | 4,840 | 3,309.6 |
| Lambton Public Health | 82 | 66 | 8,410 | 6,324.6 |
| Middlesex-London Health Unit | 245 | 167 | 27,788 | 5,442.1 |
| Southwestern Public Health | 75 | 100 | 9,740 | 4,449.4 |
| Windsor-Essex County Health Unit | 166 | 185 | 33,160 | 7,694.7 |
| TOTAL SOUTH WEST | 680 | 644 | 94,765 | 5,501.8 |
| Brant County Health Unit | 38 | 54 | 8,906 | 5,799.8 |
| City of Hamilton Public Health Services | 351 | 252 | 44,366 | 7,626.7 |
| Haldimand-Norfolk Health Unit | 40 | 41 | 6,106 | 5,088.0 |

| Public Health Unit Name | Change in cases January 22, 2022 | Change in cases January 23, 2022 | Cumulative case count | Cumulative rate per 100,000 population |
|---|----------------------------------|----------------------------------|-----------------------|--|
| Halton Region Public Health | 270 | 176 | 38,995 | 6,386.6 |
| Niagara Region Public Health | 141 | 177 | 30,194 | 6,267.9 |
| Region of Waterloo Public Health and Emergency Services | 225 | 159 | 36,950 | 6,105.1 |
| Wellington-Dufferin-Guelph Public Health | 108 | 64 | 16,714 | 5,357.2 |
| TOTAL CENTRAL WEST | 1,173 | 923 | 182,231 | 6,361.0 |
| TOTAL ONTARIO | 5,833 | 4,790 | 1,001,455 | 6,796.9 |

Notes: Health units with data corrections or updates could result in records being removed from totals, leading to negative or zero counts.

Data Source: CCM

Outbreaks

Table 5. Summary of recent confirmed COVID-19 outbreaks reported in long-term care homes, retirement homes and hospitals by status: Ontario

| Institution type | Change in outbreaks January 22, 2022 | Change in outbreaks January 23, 2022 | Number of ongoing outbreaks | Cumulative number of outbreaks reported |
|----------------------|--------------------------------------|--------------------------------------|-----------------------------|---|
| Long-term care homes | 4 | 5 | 402 | 2042 |
| Retirement homes | 5 | 5 | 302 | 1311 |
| Hospitals | 12 | 2 | 235 | 993 |

Note: Ongoing outbreaks are those that are reported in CCM as 'Open' and without a 'Declared Over Date' recorded. The start of the outbreak is determined by the onset date of first case, or if missing the outbreak reported date, or else if that is also missing, then the outbreak created date.

Data Source: CCM

Technical Notes

Data Sources

- The data for this report were based on information successfully extracted from the Public Health Case and Contact Management Solution (CCM) for all PHUs by PHO as of **January 23, 2022 at 1 p.m.** for cases reported from February 1, 2021 onwards and as of **January 20, 2022 at 9 a.m.** for cases reported up to January 31, 2021.
- CCM is a dynamic disease reporting system, which allows ongoing updates to data previously entered. As a result, data extracted from CCM represent a snapshot at the time of extraction and may differ from previous or subsequent reports.
- Ontario population estimate data were sourced from Statistics Canada. Population estimates 2001-2020: Table 1 annual population estimates by age and sex for July 1, 2001 to 2020, health regions, Ontario [unpublished data table]. Ottawa, ON: Government of Canada; 2021 [received April 22, 2021].
- COVID-19 test data were based on information from The Provincial COVID-19 Diagnostics Network, reported by member microbiology laboratories.

Data Caveats

- Due to changes in the availability of testing, driven by increasing COVID-19 cases related to the Omicron variant, case counts in this report are an underestimate of the true number of individuals with COVID-19 in Ontario. As such, data should be interpreted with caution.
- The data only represent cases reported to public health units and recorded in CCM. As a result, all counts will be subject to varying degrees of underreporting due to a variety of factors, such as disease awareness and medical care seeking behaviours, which may depend on severity of illness, clinical practice, changes in laboratory testing, and reporting behaviours.
- Data cleaning for older cases is incorporated on Mondays and Thursdays and may impact the case count published on Tuesdays and Fridays.
- Lags in CCM data entry due to weekend staffing may result in lower case counts than would otherwise be recorded.
- Only cases meeting the confirmed case classification as listed in the [MOH Case Definition – Coronavirus Disease \(COVID-19\) document](#) are included in the report counts from CCM.
- Cases of confirmed reinfection, as defined in the provincial case definitions, are counted as unique investigations.
- Case classification information may be updated for individuals with a positive result issued from a point-of-care assays.
- The number of tests performed does not reflect the number of specimens or persons tested. More than one test may be performed per specimen or per person. As such, the percentage of tests that were positive does not necessarily translate to the number of specimens or persons testing positive.
- Reported date is the date the case was reported to the public health unit.

- Resolved cases are determined only for COVID-19 cases that have not died. Cases that have died are considered fatal and not resolved. The following cases are classified as resolved:
 - Cases that are reported as 'recovered' in CCM based on local public health unit assessment
 - Cases that are not hospitalized and are 14 days past their symptom onset date or specimen collection date (where symptom onset date is not known)
 - Cases that are currently hospitalized (no hospital end date entered) and have a status of 'closed' in CCM (indicating public health unit follow-up is complete) and are 14 days past their symptom onset date or specimen collection date
- Hospitalization includes all cases hospitalized (or that had their hospital stay extended) because of COVID-19. It includes cases that have been discharged from hospital as well as cases that are currently hospitalized. Includes Intensive Care Unit (ICU) cases but not emergency room visits. Hospitalizations were identified by a reported hospital admission date or reported 'Yes' for hospitalization/ICU
- ICU admission includes all cases for which an ICU admission date was reported at the time of data extraction. It is a subset of the count of hospitalized cases. It includes cases that have been treated or that are currently being treated in an ICU.
- Orientation of case counts by geography is based on the permanent health unit. This is equivalent to the diagnosing health unit (DHU) in iPHIS. DHU refers to the case's public health unit of residence at the time of illness onset and not necessarily the location of exposure. Cases for which the DHU was reported as MOH-PHO (to signify a case that is not a resident of Ontario) have been excluded from the analyses.
- Male/Female information presented in this report are sourced from the Sex field in CCM and are intended to represent sex assigned at birth. On October 14, 2021 changes were made in CCM to enable reporting on the Sex field where these data are supplemented by archived Male/Female information previously entered in the Gender field.
- Likely source of acquisition is determined by examining the epidemiologic link and epidemiologic link status fields in CCM. If no epidemiologic link is identified in those fields the risk factor fields are examined to determine whether a case travelled, was associated with a confirmed outbreak, was a contact of a case, had no known epidemiological link (sporadic community transmission) or was reported to have an unknown source/no information was reported. Some cases may have no information reported if the case is untraceable, was lost to follow-up or referred to FNIHB. Cases with multiple risk factors were assigned to a single likely acquisition source group which was determined hierarchically in the following order:
 - For cases with an episode date *on or after* April 1, 2020: Outbreak-associated > close contact of a confirmed case > travel > no known epidemiological link > information missing or unknown
 - For cases with an episode date *before* April 1, 2020: Travel > outbreak-associated > close contact of a confirmed case > no known epidemiological link > information missing or unknown
 - Case episode date represents an estimate of disease onset. This date is calculated based on the earliest date of symptom onset, specimen collection/test date, or the date reported to the public health unit

- Deaths are determined by using the outcome field in CCM. Any case marked 'Fatal' is included in the deaths data. The CCM field Type of Death is not used to further categorize the data.
 - If the date of death is missing the outcome date field is used as a proxy for cases marked as 'Fatal' in the outcome field.
- COVID-19 cases from CCM for which the Classification and/or Disposition was reported as ENTERED IN ERROR, DOES NOT MEET DEFINITION, IGNORE, DUPLICATE or any variation on these values have been excluded. The provincial case count for COVID-19 may include some duplicate records, if these records were not identified and resolved.
- Ongoing outbreaks are those that are reported in CCM as 'Open' and without a 'Declared Over Date' recorded. Closed outbreaks are 'Closed' or have a 'Declared Over Date' recorded in CCM or where the outbreak start date (determined by the onset date of first case, or if missing the reported date, or if missing the created date) is more than 5 months from the current date, even for outbreaks where the outbreak status value selected in CCM is 'OPEN'.
- 'Long-term care home residents' includes cases that reported 'Yes' to the risk factor 'Resident of a long-term care home'; or 'Yes' to the risk factor 'Resident of nursing home or other chronic care facility' and reported to be part of an outbreak assigned as a long-term care home (via the Outbreak number or case comments field); or were reported to be part of an outbreak assigned as a long-term care home (via the outbreak number or case comments field) with an age over 70 years and did not report 'No' to the risk factors 'Resident of long-term care home' or 'Resident of nursing home or other chronic care facility'. 'Long-term care home residents' excludes cases that reported 'Yes' to any of the health care worker occupational risk factors.
- The 'health care workers' variable includes cases that reported 'Yes' to any of the occupation of health care worker, doctor, nurse, dentist, dental hygienist, midwife, other medical technicians, personal support worker, respiratory therapist, first responder.
- 'Health care workers associated with long-term care outbreaks' includes 'health care workers' reported to be part of an outbreak assigned as a long-term care home (via the outbreak number or case comments field). Excludes cases that reported 'Yes' to risk factors 'Resident of long-term care home' or 'Resident of nursing home or other chronic care facility' and 'Yes' to the calculated 'health care workers' variable.
- Percent change is calculated by taking the difference between the current period (i.e., daily count or sum of the daily count over a 7-day period) and previous period (i.e., daily count or sum of the daily count over a 7-day period), divided by the previous period.

Appendix A

Table A1. Weekly rates of confirmed COVID-19 cases per 100,000 population over recent rolling 7-day periods, by reported date and public health unit: Ontario, January 8, 2022 to January 20, 2022

| Public Health Unit Name | Jan 8 to Jan 14 | Jan 9 to Jan 15 | Jan 10 to Jan 16 | Jan 11 to Jan 17 | Jan 12 to Jan 18 | Jan 13 to Jan 19 | Jan 14 to Jan 20 | % change from Jan 8 – Jan 14 to Jan 14 – Jan 20 |
|--|-----------------|-----------------|------------------|------------------|------------------|------------------|------------------|---|
| NORTH WEST | | | | | | | | |
| Northwestern Health Unit | 368.3 | 390.5 | 335.0 | 331.3 | 342.4 | 346.1 | 335.0 | -9.0% |
| Thunder Bay District Health Unit | 400.1 | 395.7 | 357.0 | 336.1 | 332.9 | 330.4 | 317.0 | -20.8% |
| NORTH EAST | | | | | | | | |
| Algoma Public Health | 270.7 | 300.4 | 301.3 | 311.4 | 322.5 | 298.7 | 301.3 | +11.3% |
| North Bay Parry Sound District Health Unit | 216.5 | 215.8 | 198.8 | 207.3 | 208.0 | 212.7 | 190.2 | -12.1% |
| Porcupine Health Unit | 310.6 | 292.9 | 276.5 | 267.1 | 280.0 | 285.9 | 287.1 | -7.6% |
| Public Health Sudbury & Districts | 429.7 | 466.2 | 449.7 | 393.7 | 427.8 | 431.2 | 416.1 | -3.2% |
| Timiskaming Health Unit | 218.4 | 224.3 | 230.2 | 218.4 | 203.6 | 215.4 | 215.4 | -1.4% |
| EASTERN | | | | | | | | |
| Ottawa Public Health | 331.5 | 302.2 | 293.4 | 282.8 | 243.5 | 243.8 | 250.0 | -24.6% |
| Eastern Ontario Health Unit | 501.3 | 486.0 | 441.0 | 419.3 | 386.8 | 374.3 | 387.3 | -22.7% |
| Hastings Prince Edward Public Health | 304.9 | 307.2 | 285.3 | 251.7 | 221.6 | 216.4 | 196.1 | -35.7% |

| Public Health Unit Name | Jan 8 to Jan 14 | Jan 9 to Jan 15 | Jan 10 to Jan 16 | Jan 11 to Jan 17 | Jan 12 to Jan 18 | Jan 13 to Jan 19 | Jan 14 to Jan 20 | % change from Jan 8 – Jan 14 to Jan 14 – Jan 20 |
|--|-----------------|-----------------|------------------|------------------|------------------|------------------|------------------|---|
| Kingston, Frontenac and Lennox & Addington Public Health | 228.9 | 218.4 | 211.3 | 189.7 | 174.4 | 152.5 | 166.3 | -27.3% |
| Leeds, Grenville & Lanark District Health Unit | 185.6 | 192.3 | 202.3 | 203.4 | 196.7 | 207.8 | 206.2 | +11.1% |
| Renfrew County and District Health Unit | 305.1 | 280.3 | 309.8 | 284.9 | 233.2 | 172.4 | 203.7 | -33.2% |
| CENTRAL EAST | | | | | | | | |
| Durham Region Health Department | 752.9 | 769.2 | 761.6 | 698.5 | 625.8 | 529.6 | 454.2 | -39.7% |
| Haliburton, Kawartha, Pine Ridge District Health Unit | 301.0 | 304.1 | 304.1 | 272.1 | 258.5 | 261.1 | 261.6 | -13.1% |
| Peel Public Health | 615.0 | 597.4 | 593.7 | 581.6 | 557.5 | 505.5 | 463.7 | -24.6% |
| Peterborough Public Health | 303.1 | 316.6 | 318.0 | 297.1 | 276.8 | 262.0 | 253.9 | -16.2% |
| Simcoe Muskoka District Health Unit | 427.3 | 433.2 | 417.2 | 408.6 | 415.7 | 392.4 | 378.3 | -11.5% |
| York Region Public Health | 542.0 | 536.4 | 508.6 | 458.1 | 426.9 | 377.3 | 338.2 | -37.6% |
| TORONTO | | | | | | | | |
| Toronto Public Health | 449.2 | 446.0 | 442.9 | 428.4 | 404.8 | 374.5 | 350.2 | -22.0% |
| SOUTH WEST | | | | | | | | |
| Chatham-Kent Public Health | 511.2 | 476.5 | 445.5 | 445.5 | 455.8 | 478.3 | 478.3 | -6.4% |
| Grey Bruce Health Unit | 223.1 | 215.7 | 208.9 | 202.7 | 211.8 | 203.2 | 186.8 | -16.3% |

| Public Health Unit Name | Jan 8 to Jan 14 | Jan 9 to Jan 15 | Jan 10 to Jan 16 | Jan 11 to Jan 17 | Jan 12 to Jan 18 | Jan 13 to Jan 19 | Jan 14 to Jan 20 | % change from Jan 8 – Jan 14 to Jan 14 – Jan 20 |
|---|-----------------|-----------------|------------------|------------------|------------------|------------------|------------------|---|
| Huron Perth Public Health | 194.9 | 192.1 | 192.8 | 194.2 | 203.8 | 195.6 | 186.0 | -4.6% |
| Lambton Public Health | 609.2 | 566.3 | 552.0 | 527.2 | 583.6 | 512.1 | 485.8 | -20.3% |
| Middlesex-London Health Unit | 424.4 | 401.3 | 398.5 | 384.2 | 365.4 | 350.6 | 347.8 | -18.0% |
| Southwestern Public Health | 319.8 | 303.8 | 292.4 | 295.6 | 274.5 | 262.7 | 262.2 | -18.0% |
| Windsor-Essex County Health Unit | 573.9 | 529.1 | 521.6 | 515.1 | 491.9 | 480.6 | 497.5 | -13.3% |
| CENTRAL WEST | | | | | | | | |
| Brant County Health Unit | 511.2 | 469.5 | 470.2 | 444.1 | 434.4 | 426.5 | 405.7 | -20.6% |
| City of Hamilton Public Health Services | 573.6 | 525.2 | 516.1 | 506.4 | 472.9 | 428.6 | 425.6 | -25.8% |
| Haldimand-Norfolk Health Unit | 411.6 | 439.1 | 404.1 | 404.1 | 347.5 | 339.1 | 350.8 | -14.8% |
| Halton Region Public Health | 599.3 | 567.0 | 561.3 | 552.4 | 538.8 | 491.7 | 445.5 | -25.7% |
| Niagara Region Public Health | 513.2 | 508.6 | 480.6 | 439.7 | 443.6 | 404.8 | 378.8 | -26.2% |
| Region of Waterloo Public Health and Emergency Services | 633.3 | 592.3 | 561.1 | 512.2 | 462.8 | 406.1 | 360.0 | -43.2% |
| Wellington-Dufferin-Guelph Public Health | 331.1 | 324.7 | 325.3 | 320.2 | 303.2 | 285.9 | 288.1 | -13.0% |
| TOTAL ONTARIO | 478.2 | 466.1 | 455.3 | 434.7 | 412.0 | 380.2 | 358.5 | -25.0% |

Note: Rates are based on the sum of the daily case counts during the date ranges specified in each column.

Data Source: CCM

Citation

Ontario Agency for Health Protection and Promotion (Public Health Ontario). Epidemiologic summary: COVID-19 in Ontario – January 15, 2020 to January 23, 2022. Toronto, ON: Queen’s Printer for Ontario; 2022.

Disclaimer

This document was developed by Public Health Ontario (PHO). PHO provides scientific and technical advice to Ontario’s government, public health organizations and health care providers. PHO’s work is guided by the current best available evidence at the time of publication. The application and use of this document is the responsibility of the user. PHO assumes no liability resulting from any such application or use. This document may be reproduced without permission for non-commercial purposes only and provided that appropriate credit is given to PHO. No changes and/or modifications may be made to this document without express written permission from PHO.

For Further Information

For more information, cd@oahpp.ca.

Public Health Ontario

Public Health Ontario is an agency of the Government of Ontario dedicated to protecting and promoting the health of all Ontarians and reducing inequities in health. Public Health Ontario links public health practitioners, front-line health workers and researchers to the best scientific intelligence and knowledge from around the world.

For more information about PHO, visit publichealthontario.ca.



©Queen’s Printer for Ontario, 2022