

DAILY EPIDEMIOLOGICAL SUMMARY

COVID-19 in Ontario: January 15, 2020 to January 13, 2022

This report includes the most current information available from CCM as of **January 13, 2022**.

A [weekly summary report](#) is available with additional information to complement the daily report.

Please visit the interactive [Ontario COVID-19 Data Tool](#) to explore recent COVID-19 data by public health unit, age group, sex, and trends over time. For more information about whole genome sequencing, please see the [SARS CoV-2 Whole Genome Sequencing in Ontario report](#).

This **daily** report provides an epidemiologic summary of recent COVID-19 activity in Ontario. The change in cases is determined by taking the cumulative difference between the current day and the previous day.

Highlights

- There are a total of 926,904 confirmed cases of COVID-19 in Ontario reported to date.
- Compared to the previous day, this represents:
 - An increase of 10,964 confirmed cases (percent change of +10.6%)
 - An increase of 41* deaths (percent change of +17.1%)
 - An increase of 21,672 resolved cases (percent change of +9.4%)

* This number only includes deaths that have occurred in the last month.

Due to changes in the availability of testing, driven by increasing COVID-19 cases related to the Omicron variant, case counts in this report are an underestimate of the true number of individuals with COVID-19 in Ontario. In addition, data for hospitalizations, intensive care unit (ICU) admission and deaths in the most recent reporting period should be interpreted with caution due to data entry and reporting lags. For more information, please see our data caveats and check out [our blog](#). Effective, December 31, 2021, the Ministry of Health updated its eligibility requirements for molecular testing (PCR or rapid molecular testing). Details can be found in the Ministry of Health [Interim Guidance](#).

In this document, the term 'change in cases' refers to cases publicly reported by the province for a given day. Data corrections or updates can result in case records being removed and or updated from past reports and may result in subset totals for updated case counts (i.e., age group, sex) differing from the overall updated case counts.

The term public health unit reported date in this document refers to the date local public health units were first notified of the case.

Case Characteristics

Table 1a. Summary of recent confirmed cases of COVID-19: Ontario

	Change in cases January 12, 2022	Change in cases January 13, 2022	Percentage change January 13, 2022 compared to January 12, 2022	Cumulative case count as of January 13, 2022
Total number of cases	9,909	10,964	+10.6%	926,904
Number of deaths	35	41	+17.1%	10,522*
Number resolved	19,816	21,672	+9.4%	804,886

Note: The number of cases publicly reported by the province each day may not align with case counts reported to public health on a given day; public health unit reported date refers to the date local public health was first notified of the case. Data corrections or updates can result in case records being removed and or updated from past reports. The number of deaths presented in the change in cases column for each day only includes deaths that occurred in the last 30 days.

*In addition, there was 1 death that occurred more than one month ago added to the cumulative count based on data cleaning.

Data Source: CCM

Table 1b. Summary of recent confirmed cases of COVID-19 by age group and sex: Ontario

	Change in cases January 12, 2022	Change in cases January 13, 2022	Cumulative case count as of January 13, 2022
Sex: Male	3,996	4,588	450,645
Sex: Female	5,780	6,247	472,262
Ages: 0-4	257	216	26,769
Ages: 5-11	348	504	56,402
Ages: 12-19	578	728	82,828
Ages: 20-39	3,788	4,260	357,744
Ages: 40-59	3,075	3,292	257,655
Ages: 60-79	1,218	1,320	110,293
Ages: 80 and over	641	635	34,978

Note: Not all cases have a reported age or sex reported. Data corrections or updates can result in case records being removed and or updated from past reports and may result in subset totals (i.e., age group, sex) differing from past publicly reported case counts.

Data Source: CCM

Table 2. Summary of recent confirmed cases of COVID-19 in long-term care homes: Ontario

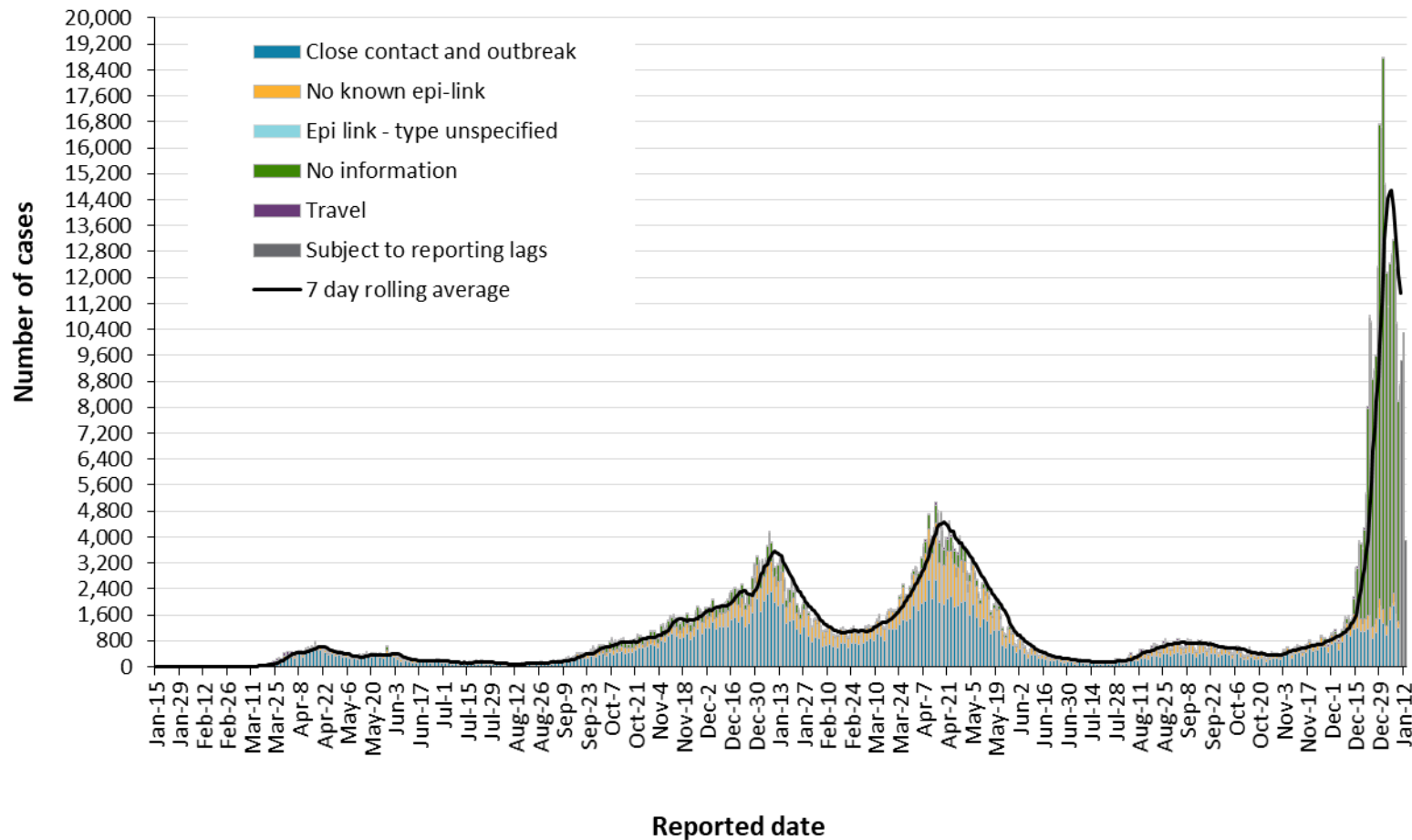
Long-term care home cases	Change in cases January 12, 2022	Change in cases January 13, 2022	Cumulative case count as of January 13, 2022
Residents	275	272	18,259
Health care workers	85	126	8,446
Deaths among residents	3	11	4,091
Deaths among health care workers	0	0	10

Note: Information on how long-term care home residents and health care workers are identified is available in the [technical notes](#). Also, the change in cases in these categories may represent existing case records that have been updated.

Data Source: CCM

Time

Figure 1. Confirmed cases of COVID-19 by likely acquisition and public health unit reported date: Ontario, January 15, 2020 to January 13, 2022

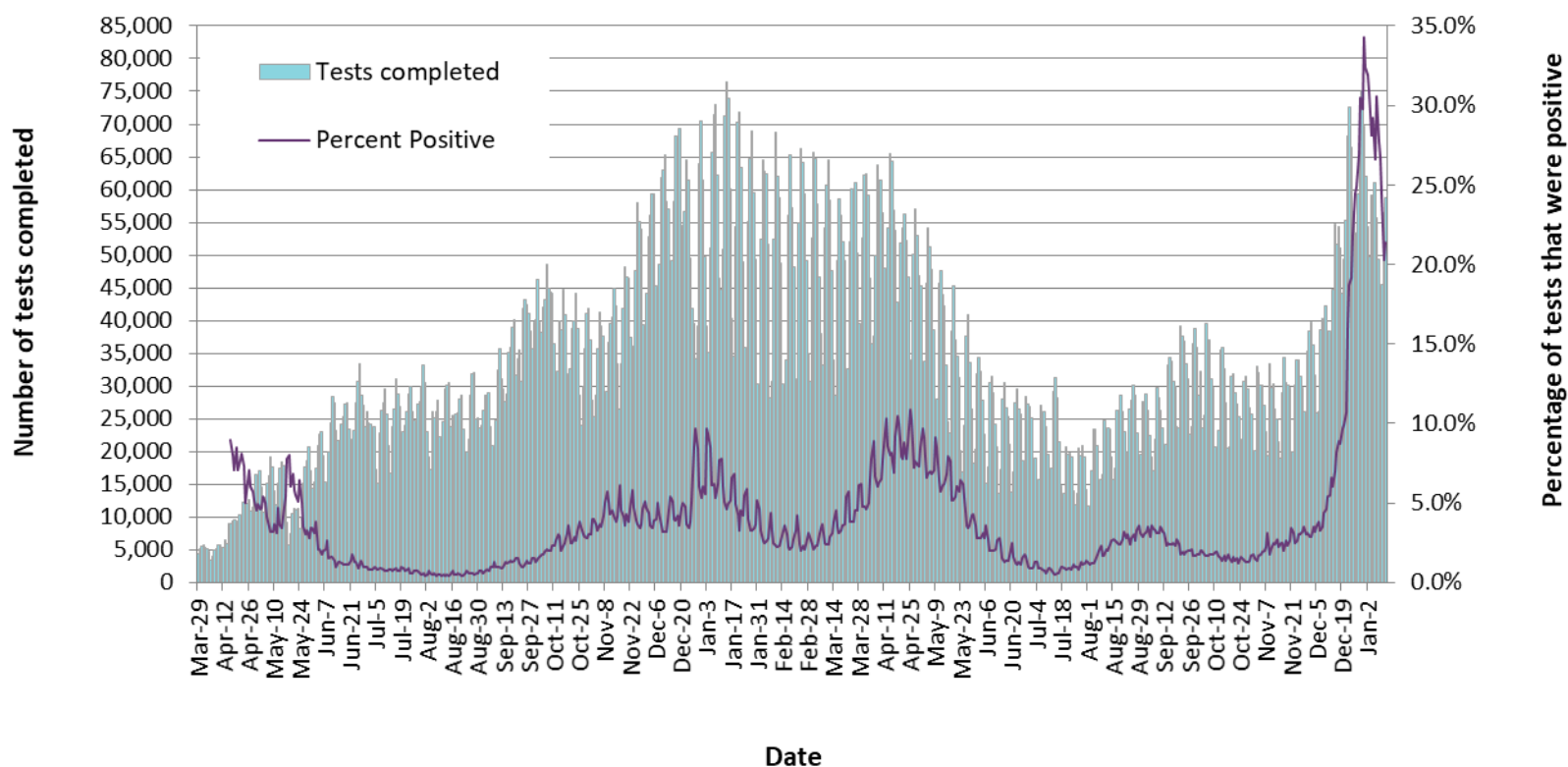


Note: Changes in testing eligibility went into effect on December 31, 2021, limiting access to testing and resulting in a change in the population being tested.

Data Source: CCM

COVID-19 in Ontario: January 15, 2020 to January 13, 2022

Figure 2. Number of COVID-19 tests completed and percent positivity: Ontario, March 29, 2020 to January 12, 2022

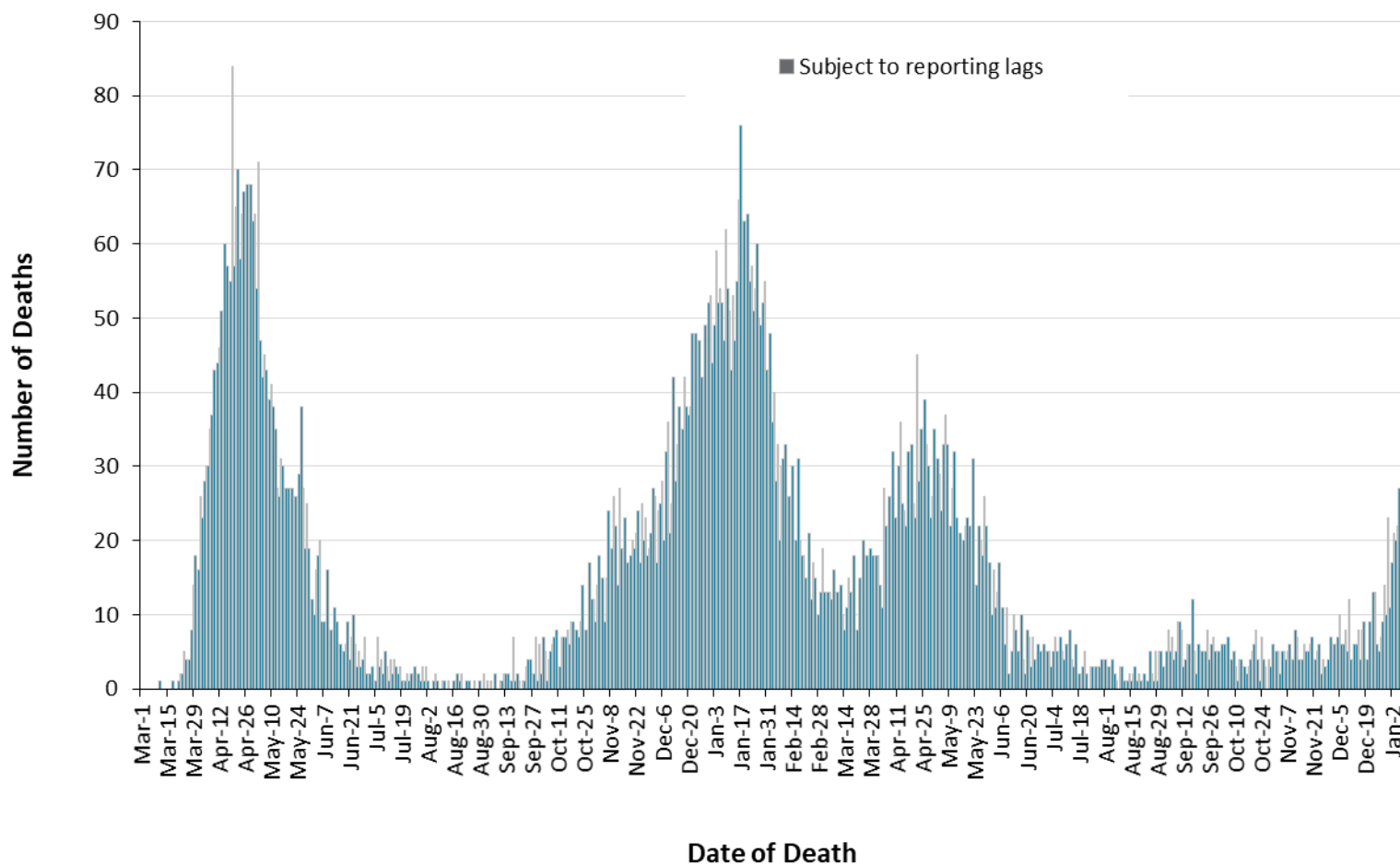


Note: The number of tests performed does not reflect the number of specimens or persons tested. More than one test may be performed per specimen or per person. As such, the percentage of tests that were positive does not necessarily translate to the number of specimens or persons testing positive. Changes in testing eligibility went into effect on December 31, 2021, limiting access to testing and resulting in a change in the population being tested.

Data Source: The Provincial COVID-19 Diagnostics Network, data reported by member microbiology laboratories.

Severity

Figure 3. Confirmed deaths among COVID-19 cases by date of death: Ontario, March 1, 2020 to January 13, 2022



Note: Cases without a death date are not included in the figure.

Data Source: CCM

Table 3. Confirmed cases of COVID-19 by severity: Ontario

	Cumulative case count as of January 13, 2022	Percentage of all cases
Cumulative deaths reported (please note there may be a reporting delay for deaths)	10,522	1.1%
Deaths reported in ages: 19 and under	9	<0.1%
Deaths reported in ages: 20-39	119	<0.1%
Deaths reported in ages: 40-59	758	0.3%
Deaths reported in ages: 60-79	3,500	3.2%
Deaths reported in ages: 80 and over	6,135	17.5%
Ever in ICU	6,705	0.7%
Ever hospitalized	34,636	3.7%

Note: Not all cases have an age reported. Data corrections or updates can result in case records being removed and/or updated and may result in totals differing from past publicly reported case counts. Percentage of deaths reported for each age group is calculated using all cases in the age group as the denominator.

Data Source: CCM

Geography

Table 4. Summary of recent confirmed cases of COVID-19 by public health unit and region: Ontario

Public Health Unit Name	Change in cases January 12, 2022	Change in cases January 13, 2022	Cumulative case count	Cumulative rate per 100,000 population
Northwestern Health Unit	22	53	2,544	3,133.6
Thunder Bay District Health Unit	111	87	5,496	3,485.0
TOTAL NORTH WEST	133	140	8,040	3,365.6
Algoma Public Health	59	69	2,824	2,396.5
North Bay Parry Sound District Health Unit	32	61	2,209	1,708.3
Porcupine Health Unit	34	35	3,693	4,344.7
Public Health Sudbury & Districts	135	107	7,290	3,551.6
Timiskaming Health Unit	13	27	821	2,422.9
TOTAL NORTH EAST	273	299	16,837	2,947.2
Ottawa Public Health	494	453	52,213	5,005.4
Eastern Ontario Health Unit	220	146	10,889	5,044.5
Hastings Prince Edward Public Health	91	80	4,952	2,865.2
Kingston, Frontenac and Lennox & Addington Public Health	54	81	7,820	3,737.5
Leeds, Grenville & Lanark District Health Unit	56	54	4,763	2,646.9
Renfrew County and District Health Unit	35	80	2,269	2,091.7
TOTAL EASTERN	950	894	82,906	4,296.8

Public Health Unit Name	Change in cases January 12, 2022	Change in cases January 13, 2022	Cumulative case count	Cumulative rate per 100,000 population
Durham Region Health Department	799	1,054	44,427	6,244.8
Haliburton, Kawartha, Pine Ridge District Health Unit	79	73	4,971	2,606.3
Peel Public Health	1,365	1,561	150,898	9,650.4
Peterborough Public Health	73	79	4,196	2,832.9
Simcoe Muskoka District Health Unit	294	329	27,411	4,534.4
York Region Public Health	1,001	918	86,864	7,237.1
TOTAL CENTRAL EAST	3,611	4,014	318,767	7,214.1
Toronto Public Health	1,895	1,961	247,860	8,294.0
TOTAL TORONTO	1,895	1,961	247,860	8,294.0
Chatham-Kent Public Health	68	79	4,957	4,649.2
Grey Bruce Health Unit	44	76	4,732	2,686.3
Huron Perth Public Health	35	84	4,439	3,035.4
Lambton Public Health	127	143	7,511	5,648.6
Middlesex-London Health Unit	290	315	25,361	4,966.8
Southwestern Public Health	90	114	8,902	4,066.5
Windsor-Essex County Health Unit	390	302	30,449	7,065.6
TOTAL SOUTH WEST	1,044	1,113	86,351	5,013.3
Brant County Health Unit	116	121	8,082	5,263.2
City of Hamilton Public Health Services	411	604	40,943	7,038.2
Haldimand-Norfolk Health Unit	108	66	5,555	4,628.9

Public Health Unit Name	Change in cases January 12, 2022	Change in cases January 13, 2022	Cumulative case count	Cumulative rate per 100,000 population
Halton Region Public Health	436	633	35,005	5,733.1
Niagara Region Public Health	302	340	27,543	5,717.6
Region of Waterloo Public Health and Emergency Services	469	613	33,505	5,535.9
Wellington-Dufferin-Guelph Public Health	161	166	15,510	4,971.2
TOTAL CENTRAL WEST	2,003	2,543	166,143	5,799.4
TOTAL ONTARIO	9,909	10,964	926,904	6,290.9

Notes: Health units with data corrections or updates could result in records being removed from totals, leading to negative or zero counts.

Data Source: CCM

Outbreaks

Table 5. Summary of recent confirmed COVID-19 outbreaks reported in long-term care homes, retirement homes and hospitals by status: Ontario

Institution type	Change in outbreaks January 12, 2022	Change in outbreaks January 13, 2022	Number of ongoing outbreaks	Cumulative number of outbreaks reported
Long-term care homes	12	14	411	1,983
Retirement homes	17	19	298	1,229
Hospitals	12	17	217	879

Note: Ongoing outbreaks are those that are reported in CCM as 'Open' and without a 'Declared Over Date' recorded. The start of the outbreak is determined by the onset date of first case, or if missing the outbreak reported date, or else if that is also missing, then the outbreak created date.

Data Source: CCM

Technical Notes

Data Sources

- The data for this report were based on information successfully extracted from the Public Health Case and Contact Management Solution (CCM) for all PHUs by PHO as of **January 13, 2022 at 1 p.m.** for cases reported from February 1, 2021 onwards and as of **January 13, 2022 at 9 a.m.** for cases reported up to January 31, 2021.
- CCM is a dynamic disease reporting system, which allows ongoing updates to data previously entered. As a result, data extracted from CCM represent a snapshot at the time of extraction and may differ from previous or subsequent reports.
- Ontario population estimate data were sourced from Statistics Canada. Population estimates 2001-2020: Table 1 annual population estimates by age and sex for July 1, 2001 to 2020, health regions, Ontario [unpublished data table]. Ottawa, ON: Government of Canada; 2021 [received April 22, 2021].
- COVID-19 test data were based on information from The Provincial COVID-19 Diagnostics Network, reported by member microbiology laboratories.

Data Caveats

- Due to changes in the availability of testing, driven by increasing COVID-19 cases related to the Omicron variant, case counts in this report are an underestimate of the true number of individuals with COVID-19 in Ontario. As such, data should be interpreted with caution.
- The data only represent cases reported to public health units and recorded in CCM. As a result, all counts will be subject to varying degrees of underreporting due to a variety of factors, such as disease awareness and medical care seeking behaviours, which may depend on severity of illness, clinical practice, changes in laboratory testing, and reporting behaviours.
- Data cleaning for older cases is incorporated on Mondays and Thursdays and may impact the case count published on Tuesdays and Fridays.
- Lags in CCM data entry due to weekend staffing may result in lower case counts than would otherwise be recorded.
- Only cases meeting the confirmed case classification as listed in the [MOH Case Definition – Coronavirus Disease \(COVID-19\) document](#) are included in the report counts from CCM.
- Cases of confirmed reinfection, as defined in the provincial case definitions, are counted as unique investigations.
- Case classification information may be updated for individuals with a positive result issued from a point-of-care assays.
- The number of tests performed does not reflect the number of specimens or persons tested. More than one test may be performed per specimen or per person. As such, the percentage of tests that were positive does not necessarily translate to the number of specimens or persons testing positive.
- Reported date is the date the case was reported to the public health unit.

- Resolved cases are determined only for COVID-19 cases that have not died. Cases that have died are considered fatal and not resolved. The following cases are classified as resolved:
 - Cases that are reported as 'recovered' in CCM based on local public health unit assessment
 - Cases that are not hospitalized and are 14 days past their symptom onset date or specimen collection date (where symptom onset date is not known)
 - Cases that are currently hospitalized (no hospital end date entered) and have a status of 'closed' in CCM (indicating public health unit follow-up is complete) and are 14 days past their symptom onset date or specimen collection date
- Hospitalization includes all cases hospitalized (or that had their hospital stay extended) because of COVID-19. It includes cases that have been discharged from hospital as well as cases that are currently hospitalized. Includes Intensive Care Unit (ICU) cases but not emergency room visits. Hospitalizations were identified by a reported hospital admission date or reported 'Yes' for hospitalization/ICU
- ICU admission includes all cases for which an ICU admission date was reported at the time of data extraction. It is a subset of the count of hospitalized cases. It includes cases that have been treated or that are currently being treated in an ICU.
- Orientation of case counts by geography is based on the permanent health unit. This is equivalent to the diagnosing health unit (DHU) in iPHIS. DHU refers to the case's public health unit of residence at the time of illness onset and not necessarily the location of exposure. Cases for which the DHU was reported as MOH-PHO (to signify a case that is not a resident of Ontario) have been excluded from the analyses.
- Male/Female information presented in this report are sourced from the Sex field in CCM and are intended to represent sex assigned at birth. On October 14, 2021 changes were made in CCM to enable reporting on the Sex field where these data are supplemented by archived Male/Female information previously entered in the Gender field.
- Likely source of acquisition is determined by examining the epidemiologic link and epidemiologic link status fields in CCM. If no epidemiologic link is identified in those fields the risk factor fields are examined to determine whether a case travelled, was associated with a confirmed outbreak, was a contact of a case, had no known epidemiological link (sporadic community transmission) or was reported to have an unknown source/no information was reported. Some cases may have no information reported if the case is untraceable, was lost to follow-up or referred to FNIHB. Cases with multiple risk factors were assigned to a single likely acquisition source group which was determined hierarchically in the following order:
 - For cases with an episode date *on or after* April 1, 2020: Outbreak-associated > close contact of a confirmed case > travel > no known epidemiological link > information missing or unknown
 - For cases with an episode date *before* April 1, 2020: Travel > outbreak-associated > close contact of a confirmed case > no known epidemiological link > information missing or unknown
 - Case episode date represents an estimate of disease onset. This date is calculated based on the earliest date of symptom onset, specimen collection/test date, or the date reported to the public health unit

- Deaths are determined by using the outcome field in CCM. Any case marked 'Fatal' is included in the deaths data. The CCM field Type of Death is not used to further categorize the data.
 - If the date of death is missing the outcome date field is used as a proxy for cases marked as 'Fatal' in the outcome field.
- COVID-19 cases from CCM for which the Classification and/or Disposition was reported as ENTERED IN ERROR, DOES NOT MEET DEFINITION, IGNORE, DUPLICATE or any variation on these values have been excluded. The provincial case count for COVID-19 may include some duplicate records, if these records were not identified and resolved.
- Ongoing outbreaks are those that are reported in CCM as 'Open' and without a 'Declared Over Date' recorded. Closed outbreaks are 'Closed' or have a 'Declared Over Date' recorded in CCM or where the outbreak start date (determined by the onset date of first case, or if missing the reported date, or if missing the created date) is more than 5 months from the current date, even for outbreaks where the outbreak status value selected in CCM is 'OPEN'.
- 'Long-term care home residents' includes cases that reported 'Yes' to the risk factor 'Resident of a long-term care home'; or 'Yes' to the risk factor 'Resident of nursing home or other chronic care facility' and reported to be part of an outbreak assigned as a long-term care home (via the Outbreak number or case comments field); or were reported to be part of an outbreak assigned as a long-term care home (via the outbreak number or case comments field) with an age over 70 years and did not report 'No' to the risk factors 'Resident of long-term care home' or 'Resident of nursing home or other chronic care facility'. 'Long-term care home residents' excludes cases that reported 'Yes' to any of the health care worker occupational risk factors.
- The 'health care workers' variable includes cases that reported 'Yes' to any of the occupation of health care worker, doctor, nurse, dentist, dental hygienist, midwife, other medical technicians, personal support worker, respiratory therapist, first responder.
- 'Health care workers associated with long-term care outbreaks' includes 'health care workers' reported to be part of an outbreak assigned as a long-term care home (via the outbreak number or case comments field). Excludes cases that reported 'Yes' to risk factors 'Resident of long-term care home' or 'Resident of nursing home or other chronic care facility' and 'Yes' to the calculated 'health care workers' variable.
- Percent change is calculated by taking the difference between the current period (i.e., daily count or sum of the daily count over a 7-day period) and previous period (i.e., daily count or sum of the daily count over a 7-day period), divided by the previous period.

Appendix A

Table A1. Weekly rates of confirmed COVID-19 cases per 100,000 population over recent rolling 7-day periods, by reported date and public health unit: Ontario, December 29, 2021 to January 10, 2022

Public Health Unit Name	Dec 29 to Jan 4	Dec 30 to Jan 5	Dec 31 to Jan 6	Jan 1 to Jan 7	Jan 2 to Jan 8	Jan 3 to Jan 9	Jan 4 to Jan 10	% change from Dec 29 – Jan 4 to Jan 4 – Jan 10
NORTH WEST								
Northwestern Health Unit	677.5	656.5	561.7	489.0	458.2	449.6	444.7	-34.4%
Thunder Bay District Health Unit	388.7	355.7	400.7	359.5	357.6	367.1	417.9	+7.5%
NORTH EAST								
Algoma Public Health	418.4	398.0	345.4	336.0	323.3	329.3	319.1	-23.7%
North Bay Parry Sound District Health Unit	356.5	340.3	293.9	255.2	255.2	267.6	255.2	-28.4%
Porcupine Health Unit	677.6	592.9	514.1	410.6	400.0	408.2	428.2	-36.8%
Public Health Sudbury & Districts	542.2	492.6	480.9	453.1	427.3	409.7	434.6	-19.8%
Timiskaming Health Unit	392.5	407.3	333.5	312.8	283.3	295.1	301.0	-23.3%
EASTERN								
Ottawa Public Health	663.8	611.6	563.0	496.7	449.5	445.8	428.8	-35.4%
Eastern Ontario Health Unit	905.7	865.8	807.9	764.4	679.1	695.8	662.9	-26.8%
Hastings Prince Edward Public Health	666.0	613.3	519.6	457.7	394.6	357.0	357.6	-46.3%
Kingston, Frontenac and Lennox &	654.3	596.5	508.1	408.6	341.7	318.8	301.1	-54.0%

Public Health Unit Name	Dec 29 to Jan 4	Dec 30 to Jan 5	Dec 31 to Jan 6	Jan 1 to Jan 7	Jan 2 to Jan 8	Jan 3 to Jan 9	Jan 4 to Jan 10	% change from Dec 29 – Jan 4 to Jan 4 – Jan 10
Addington Public Health								
Leeds, Grenville & Lanark District Health Unit	584.1	487.4	410.7	284.5	246.7	215.1	202.8	-65.3%
Renfrew County and District Health Unit	533.8	479.4	445.3	420.4	413.0	313.4	283.9	-46.8%
CENTRAL EAST								
Durham Region Health Department	724.0	705.8	679.6	671.7	637.6	623.1	650.0	-10.2%
Haliburton, Kawartha, Pine Ridge District Health Unit	506.5	471.9	453.5	410.5	368.6	332.4	318.3	-37.2%
Peel Public Health	762.6	755.0	773.9	727.3	699.8	668.0	647.7	-15.1%
Peterborough Public Health	533.4	525.9	490.1	445.6	415.9	388.9	374.7	-29.8%
Simcoe Muskoka District Health Unit	621.0	597.8	572.4	524.2	510.8	498.7	481.2	-22.5%
York Region Public Health	787.7	751.0	720.8	670.3	652.8	617.4	615.2	-21.9%
TORONTO								
Toronto Public Health	780.6	736.0	673.5	611.6	566.5	534.9	505.5	-35.2%
SOUTH WEST								
Chatham-Kent Public Health	444.6	533.7	559.0	633.1	712.8	694.1	668.7	+50.4%
Grey Bruce Health Unit	491.6	481.4	467.2	411.6	396.8	320.2	300.3	-38.9%
Huron Perth Public Health	493.7	528.6	488.2	446.5	376.1	282.4	253.0	-48.8%

Public Health Unit Name	Dec 29 to Jan 4	Dec 30 to Jan 5	Dec 31 to Jan 6	Jan 1 to Jan 7	Jan 2 to Jan 8	Jan 3 to Jan 9	Jan 4 to Jan 10	% change from Dec 29 – Jan 4 to Jan 4 – Jan 10
Lambton Public Health	850.6	869.4	841.5	803.9	786.6	666.3	673.8	-20.8%
Middlesex-London Health Unit	694.1	710.3	659.2	681.9	644.7	587.3	546.0	-21.3%
Southwestern Public Health	542.7	533.1	519.4	521.2	495.6	420.7	385.1	-29.0%
Windsor-Essex County Health Unit	603.6	630.5	675.0	691.5	708.7	645.3	638.8	+5.8%
CENTRAL WEST								
Brant County Health Unit	682.5	641.5	587.4	545.1	549.6	505.3	514.5	-24.6%
City of Hamilton Public Health Services	822.0	778.4	798.8	719.4	706.4	723.0	681.8	-17.1%
Haldimand-Norfolk Health Unit	572.5	590.0	555.8	498.3	465.0	454.1	455.0	-20.5%
Halton Region Public Health	748.3	721.1	752.2	723.7	717.8	719.2	677.1	-9.5%
Niagara Region Public Health	562.4	549.9	577.9	580.0	573.8	552.2	542.0	-3.6%
Region of Waterloo Public Health and Emergency Services	681.6	666.0	691.0	674.6	665.5	644.7	640.3	-6.1%
Wellington-Dufferin-Guelph Public Health	635.3	600.7	602.6	507.4	431.7	388.1	385.9	-39.3%
TOTAL ONTARIO	697.5	670.4	646.8	602.9	574.0	547.2	531.0	-23.9%

Note: Rates are based on the sum of the daily case counts during the date ranges specified in each column.

Data Source: CCM

Citation

Ontario Agency for Health Protection and Promotion (Public Health Ontario). Epidemiologic summary: COVID-19 in Ontario – January 15, 2020 to January 13, 2022. Toronto, ON: Queen’s Printer for Ontario; 2022.

Disclaimer

This document was developed by Public Health Ontario (PHO). PHO provides scientific and technical advice to Ontario’s government, public health organizations and health care providers. PHO’s work is guided by the current best available evidence at the time of publication. The application and use of this document is the responsibility of the user. PHO assumes no liability resulting from any such application or use. This document may be reproduced without permission for non-commercial purposes only and provided that appropriate credit is given to PHO. No changes and/or modifications may be made to this document without express written permission from PHO.

For Further Information

For more information, cd@oahpp.ca.

Public Health Ontario

Public Health Ontario is an agency of the Government of Ontario dedicated to protecting and promoting the health of all Ontarians and reducing inequities in health. Public Health Ontario links public health practitioners, front-line health workers and researchers to the best scientific intelligence and knowledge from around the world.

For more information about PHO, visit publichealthontario.ca.



©Queen’s Printer for Ontario, 2022