

DAILY EPIDEMIOLOGICAL SUMMARY

COVID-19 in Ontario: January 15, 2020 to December 27, 2021

This report includes the most current information available from CCM as of **December 27, 2021**.

A [weekly summary report](#) is available with additional information to complement the daily report.

Please visit the interactive [Ontario COVID-19 Data Tool](#) to explore recent COVID-19 data by public health unit, age group, sex, and trends over time. For more information about whole genome sequencing, please see the [SARS CoV-2 Whole Genome Sequencing in Ontario report](#).

This **daily** report provides an epidemiologic summary of recent COVID-19 activity in Ontario. The change in cases is determined by taking the cumulative difference between the current day and the previous day.

Highlights

- There are a total of 715,405 confirmed cases of COVID-19 in Ontario reported to date.
- Compared to the previous day, this represents:
 - An increase of 8,825 confirmed cases (percent change of -6.3%)
 - An increase of 7* deaths (percent change of +40.0%)
 - An increase of 2,481 resolved cases (percent change of +30.6%)

* This number only includes deaths that have occurred in the last month.

Due to changes in the availability of testing, driven by increasing COVID-19 cases related to the Omicron variant, case counts in this report are an underestimate of the true number of individuals with COVID-19 in Ontario. As such, data should be interpreted with caution. For more information, please see our data caveats and check out [our blog](#).

In this document, the term 'change in cases' refers to cases publicly reported by the province for a given day. Data corrections or updates can result in case records being removed and or updated from past reports and may result in subset totals for updated case counts (i.e., age group, sex) differing from the overall updated case counts.

The term public health unit reported date in this document refers to the date local public health units were first notified of the case.

Case Characteristics

Table 1a. Summary of recent confirmed cases of COVID-19: Ontario

	Change in cases December 26, 2021	Change in cases December 27, 2021	Percentage change December 27, 2021 compared to December 26, 2021	Cumulative case count as of December 27, 2021
Total number of cases	9,418	8,825	-6.3%	715,405
Number of deaths	5	7	+40.0%	10,168
Number resolved	1,899	2,481	+30.6%	634,846

Note: The number of cases publicly reported by the province each day may not align with case counts reported to public health on a given day; public health unit reported date refers to the date local public health was first notified of the case. Data corrections or updates can result in case records being removed and or updated from past reports. The number of deaths presented in the change in cases column for each day only includes deaths that occurred in the last 30 days.

Data Source: CCM

Table 1b. Summary of recent confirmed cases of COVID-19 by age group and sex: Ontario

	Change in cases December 26, 2021	Change in cases December 27, 2021	Cumulative case count as of December 27, 2021
Sex: Male	4,623	4,275	357,261
Sex: Female	4,738	4,510	355,483
Ages: 0-4	245	241	21,071
Ages: 5-11	668	605	45,027
Ages: 12-19	1,015	867	64,501
Ages: 20-39	4,300	3,967	272,266
Ages: 40-59	2,335	2,295	196,639
Ages: 60-79	735	704	87,978
Ages: 80 and over	116	138	27,766

Note: Not all cases have a reported age or sex reported. Data corrections or updates can result in case records being removed and or updated from past reports and may result in subset totals (i.e., age group, sex) differing from past publicly reported case counts.

Data Source: CCM

Table 2. Summary of recent confirmed cases of COVID-19 in long-term care homes: Ontario

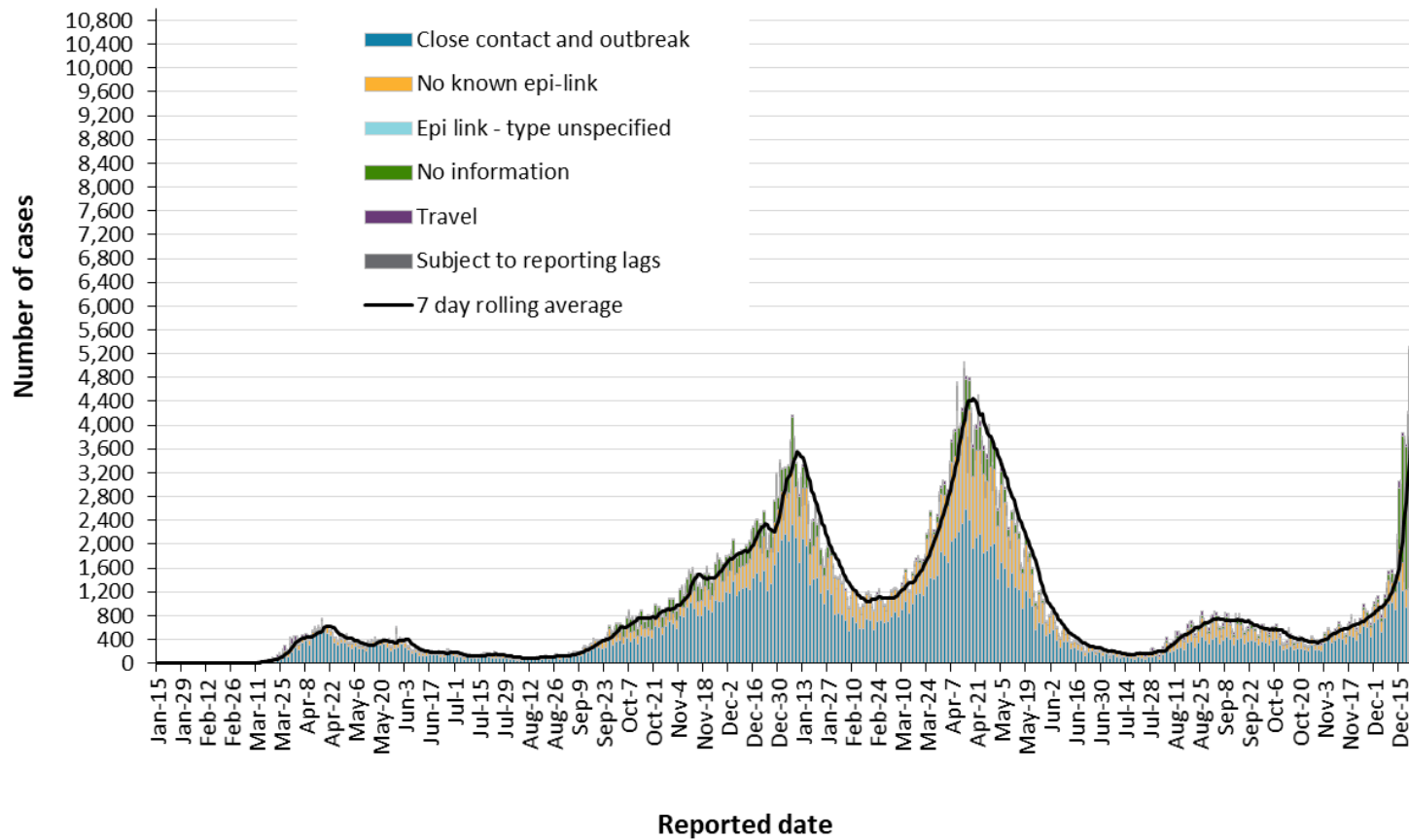
Long-term care home cases	Change in cases December 26, 2021	Change in cases December 27, 2021	Cumulative case count as of December 27, 2021
Residents	18	29	15,808
Health care workers	6	10	7,487
Deaths among residents	0	0	4,032
Deaths among health care workers	0	0	10

Note: Information on how long-term care home residents and health care workers are identified is available in the [technical notes](#). Also, the change in cases in these categories may represent existing case records that have been updated.

Data Source: CCM

Time

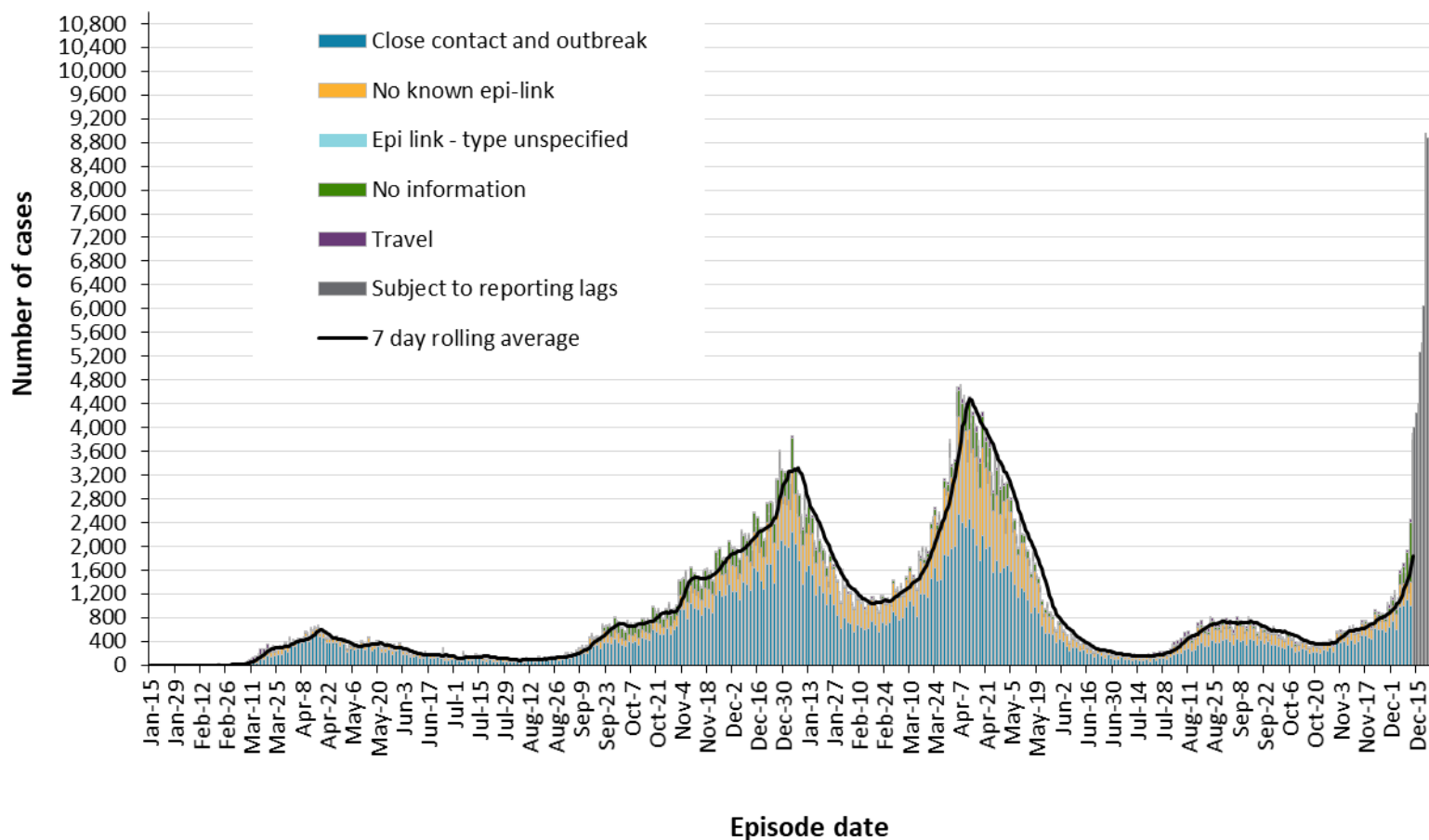
Figure 1. Confirmed cases of COVID-19 by likely acquisition and public health unit reported date: Ontario, January 15, 2020 to December 27, 2021



Data Source: CCM

COVID-19 in Ontario: January 15, 2020 to December 27, 2021

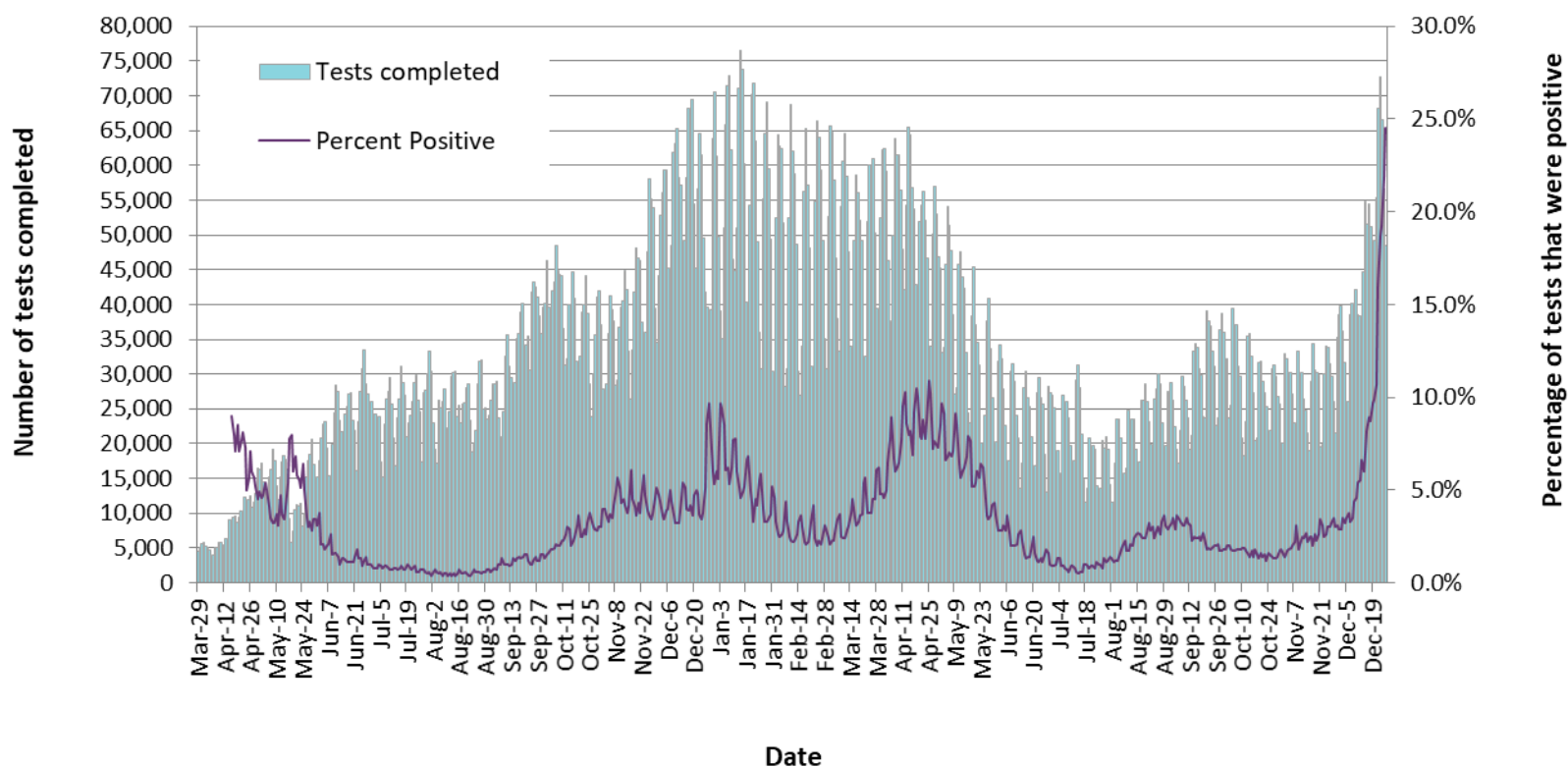
Figure 2. Confirmed cases of COVID-19 by likely acquisition and approximation of symptom onset date: Ontario, January 15, 2020 to December 27, 2021



Note: Not all cases may have an episode date and those without one are not included in the figure. Episode date is defined and available in the [technical notes](#).

Data Source: CCM

Figure 3. Number of COVID-19 tests completed and percent positivity: Ontario, March 29, 2020 to December 26, 2021

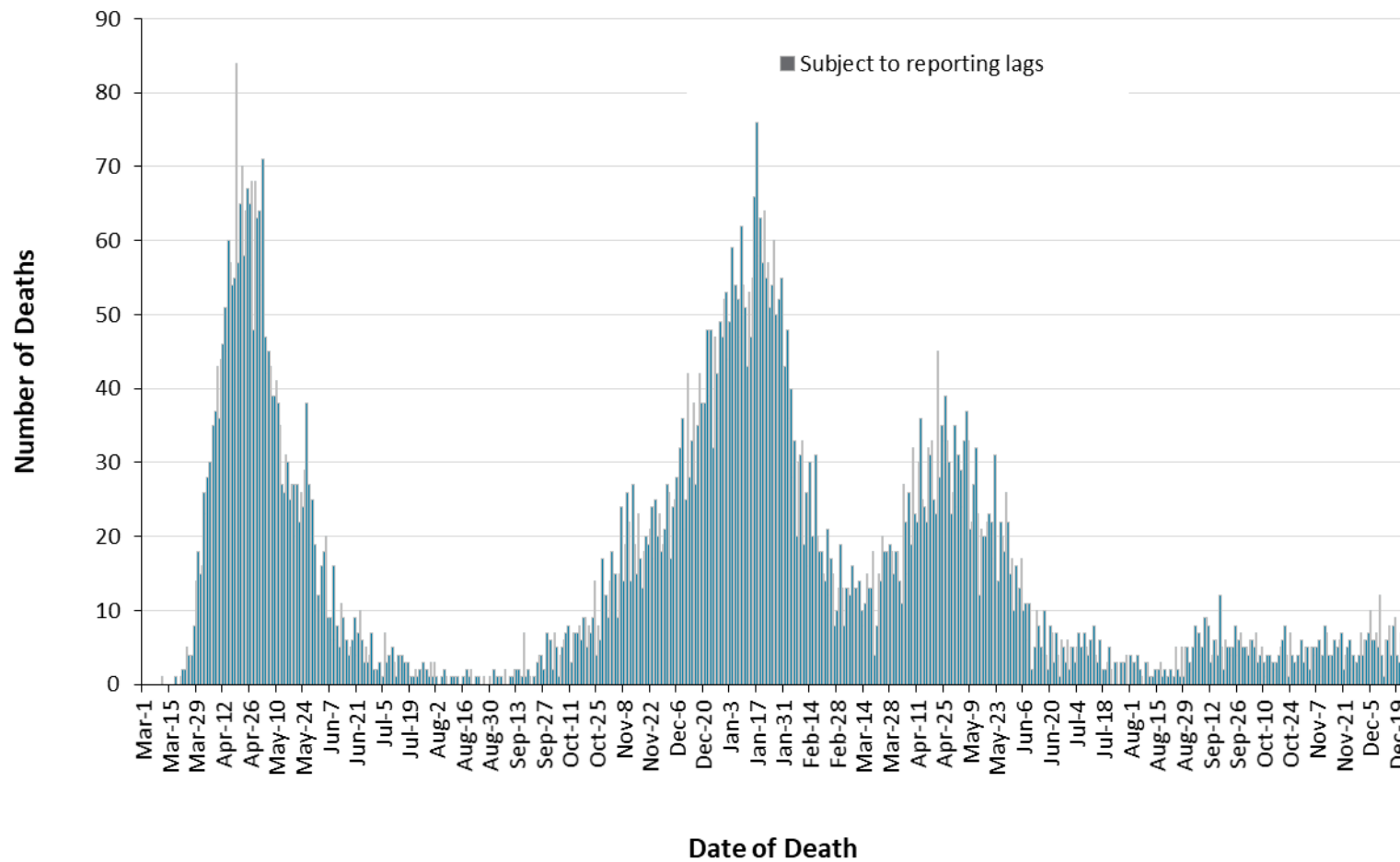


Note: The number of tests performed does not reflect the number of specimens or persons tested. More than one test may be performed per specimen or per person. As such, the percentage of tests that were positive does not necessarily translate to the number of specimens or persons testing positive.

Data Source: The Provincial COVID-19 Diagnostics Network, data reported by member microbiology laboratories.

Severity

Figure 4. Confirmed deaths among COVID-19 cases by date of death: Ontario, March 1, 2020 to December 27, 2021



Note: Cases without a death date are not included in the figure.

Data Source: CCM

Table 3. Confirmed cases of COVID-19 by severity: Ontario

	Cumulative case count as of December 27, 2021	Percentage of all cases
Cumulative deaths reported (please note there may be a reporting delay for deaths)	10,168	1.4%
Deaths reported in ages: 19 and under	8	<0.1%
Deaths reported in ages: 20-39	113	<0.1%
Deaths reported in ages: 40-59	727	0.4%
Deaths reported in ages: 60-79	3,364	3.8%
Deaths reported in ages: 80 and over	5,955	21.4%
Ever in ICU	6,380	0.9%
Ever hospitalized	32,201	4.5%

Note: Not all cases have an age reported. Data corrections or updates can result in case records being removed and/or updated and may result in totals differing from past publicly reported case counts. Percentage of deaths reported for each age group is calculated using all cases in the age group as the denominator.

Data Source: CCM

Geography

Table 4. Summary of recent confirmed cases of COVID-19 by public health unit and region: Ontario

Public Health Unit Name	Change in cases December 26, 2021	Change in cases December 27, 2021	Cumulative case count	Cumulative rate per 100,000 population
Northwestern Health Unit	28	20	1,568	1,931.4
Thunder Bay District Health Unit	26	40	3,993	2,531.9
TOTAL NORTH WEST	54	60	5,561	2,327.8
Algoma Public Health	26	31	1,813	1,538.5
North Bay Parry Sound District Health Unit	21	63	1,278	988.3
Porcupine Health Unit	13	51	2,654	3,122.4
Public Health Sudbury & Districts	33	74	4,948	2,410.6
Timiskaming Health Unit	-1	4	543	1,602.5
TOTAL NORTH EAST	92	223	11,236	1,966.8
Ottawa Public Health	826	376	39,082	3,746.6
Eastern Ontario Health Unit	142	71	7,112	3,294.7
Hastings Prince Edward Public Health	28	54	2,879	1,665.8
Kingston, Frontenac and Lennox & Addington Public Health	51	32	5,508	2,632.5
Leeds, Grenville & Lanark District Health Unit	78	54	3,096	1,720.5
Renfrew County and District Health Unit	39	28	1,201	1,107.2
TOTAL EASTERN	1,164	615	58,878	3,051.5

Public Health Unit Name	Change in cases December 26, 2021	Change in cases December 27, 2021	Cumulative case count	Cumulative rate per 100,000 population
Durham Region Health Department	464	389	32,503	4,568.7
Haliburton, Kawartha, Pine Ridge District Health Unit	55	70	3,190	1,672.5
Peel Public Health	934	886	125,435	8,022.0
Peterborough Public Health	52	31	2,634	1,778.3
Simcoe Muskoka District Health Unit	364	330	19,724	3,262.8
York Region Public Health	887	1,272	67,184	5,597.4
TOTAL CENTRAL EAST	2,756	2,978	250,670	5,672.9
Toronto Public Health	2,763	2,797	202,572	6,778.6
TOTAL TORONTO	2,763	2,797	202,572	6,778.6
Chatham-Kent Public Health	55	46	3,632	3,406.5
Grey Bruce Health Unit	49	62	3,211	1,822.9
Huron Perth Public Health	65	24	3,187	2,179.2
Lambton Public Health	139	27	5,217	3,923.4
Middlesex-London Health Unit	303	204	18,072	3,539.3
Southwestern Public Health	97	59	6,546	2,990.3
Windsor-Essex County Health Unit	158	154	24,439	5,671.0
TOTAL SOUTH WEST	866	576	64,304	3,733.3
Brant County Health Unit	65	74	5,834	3,799.2
City of Hamilton Public Health Services	491	377	30,208	5,192.9

Public Health Unit Name	Change in cases December 26, 2021	Change in cases December 27, 2021	Cumulative case count	Cumulative rate per 100,000 population
Haldimand-Norfolk Health Unit	29	44	4,076	3,396.4
Halton Region Public Health	498	399	24,912	4,080.1
Niagara Region Public Health	322	155	21,367	4,435.5
Region of Waterloo Public Health and Emergency Services	175	298	24,135	3,987.7
Wellington-Dufferin-Guelph Public Health	143	229	11,652	3,734.7
TOTAL CENTRAL WEST	1,723	1,576	122,184	4,265.0
TOTAL ONTARIO	9,418	8,825	715,405	4,855.5

Notes: Health units with data corrections or updates could result in records being removed from totals, leading to negative or zero counts.

Data Source: CCM

Outbreaks

Table 5. Summary of recent confirmed COVID-19 outbreaks reported in long-term care homes, retirement homes and hospitals by status: Ontario

Institution type	Change in outbreaks December 26, 2021	Change in outbreaks December 27, 2021	Number of ongoing outbreaks	Cumulative number of outbreaks reported
Long-term care homes	7	20	70	1,624
Retirement homes	4	4	20	946
Hospitals	8	2	41	666

Note: Ongoing outbreaks include all outbreaks that are 'Open' in CCM without a 'Declared Over Date' recorded, or where the outbreak started more than five months ago, even for outbreaks where the Outbreak Status value selected in CCM is 'OPEN'. The start of the outbreak is determined by the onset date of first case, or if missing the outbreak reported date, or else if that is also missing, then the outbreak created date.

Data Source: CCM

Variant COVID-19 Cases

As of December 6, 2021 all eligible COVID-19 PCR-positive specimens in Ontario will be screened for S gene target failure (SGTF) as a marker for the Omicron variant. For more information please see the [SARS-CoV-2 \(COVID-19 Virus\) Variant of Concern \(VOC\) S Screening and Genomic Sequencing for Surveillance website](#).

Table 6. Summary of confirmed COVID-19 cases with a lineage* or S-gene target failure detected from October 31, 2021 to December 27, 2021: Ontario**

	Change in cases December 26, 2021	Change in cases December 27, 2021	Cumulative case count since October 31, 2021***
Variant of Concern			
Lineage B.1.1.7 (Alpha)	0	0	1
Lineage B.1.351 (Beta)	0	0	0
Lineage P.1 (Gamma)	0	0	2
Lineage B.1.617.2 (Delta)	266	26	17,071
Lineage B.1.1.529 (Omicron)	49	63	1,727
Mutations			
S-gene Target Failure	1,915	1,708	20,671

Note: Interpret the VOC trends with caution due to the varying time required to complete genomic analysis following the initial positive test for SARS-CoV-2. Due to the nature of the genomic analysis, test results may be completed in batches. Data corrections or updates can result in case records being removed and/or updated and may result in totals differing from past publicly reported case counts. Data for calculating the change in cases and the cumulative case counts uses data from the Investigation Lineage or Investigation Mutation fields only. Changes to the VOC testing algorithm may impact counts and trends. Further details can be found in the [data caveats](#) section.

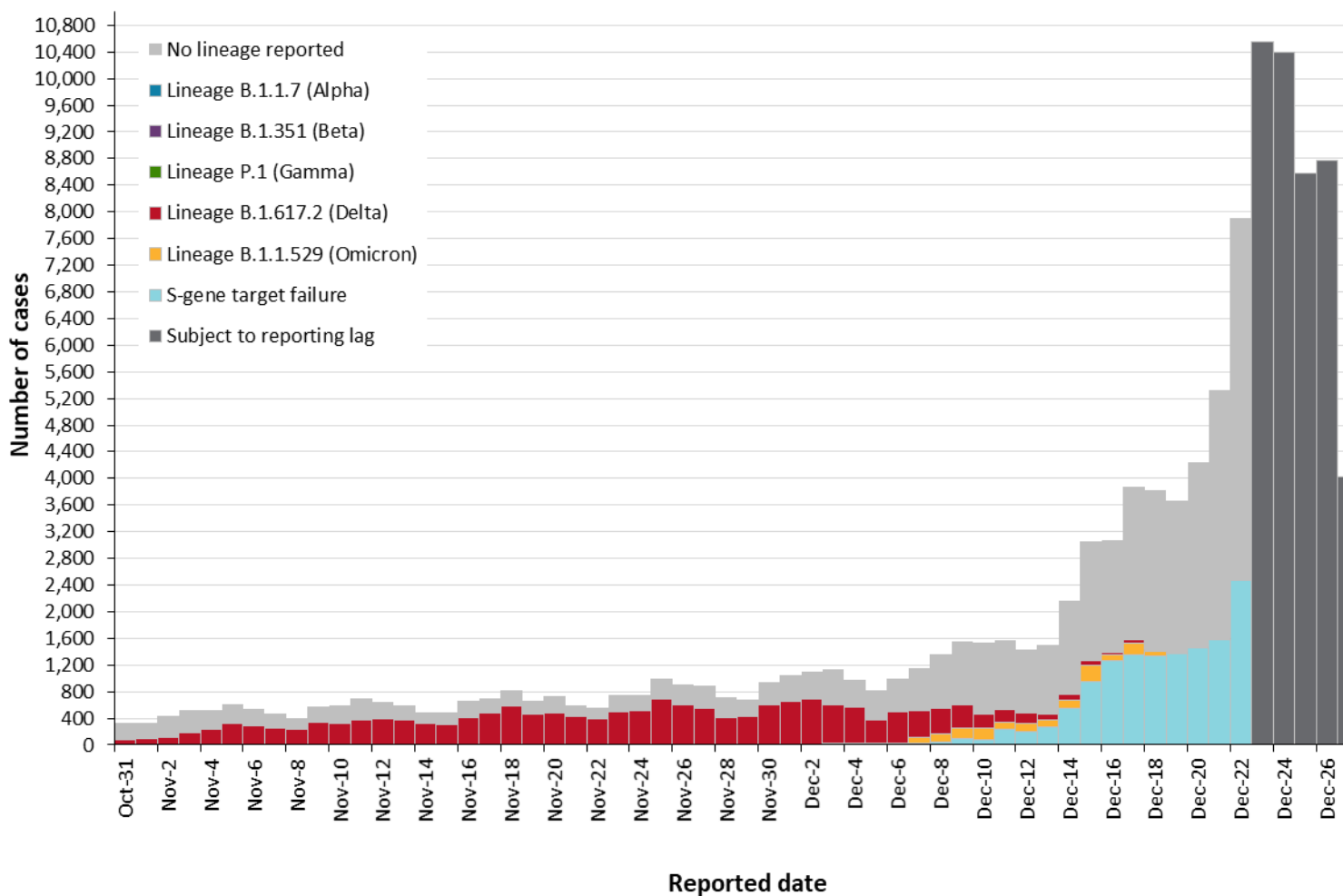
*Includes all confirmed COVID-19 cases with a lineage identified by genomic analysis and reported in CCM as of the extraction time. B.1.617.2 (Delta) includes all Delta sublineage cases identified by genomic analysis.

**Includes all confirmed COVID-19 cases with an S-gene target failure identified by PCR assay and reported in CCM as of the extraction time. If a VOC is identified through genomic analysis cases initially classified as a mutation may be updated and moved to the appropriate lineage (e.g. B.1.1.529)

***Cumulative case counts may be impacted by lags in case identification, reporting and/or data entry.

Data Source: CCM

Figure 5. Confirmed COVID-19 cases with a lineage* or S-gene target failure detected by public health unit reported date: Ontario, October 31, 2021 to December 27, 2021**



Note: Reported date is the date the case was reported, not the date that the VOC was identified. Details on testing for variants of concern are in the [technical notes](#). Interpret the VOC trends with caution due to the varying time required to complete testing and/or genomic analysis following the initial positive test for SARS-CoV-2.

*Includes all confirmed COVID-19 cases with a lineage identified by genomic analysis. B.1.617.2 (Delta) includes all Delta sublineage cases identified by genomic analysis.

**Includes all confirmed COVID-19 cases with an S-gene target failure identified by PCR assay and reported in CCM as of the extraction time

Data Source: CCM

Technical Notes

Data Sources

- The data for this report were based on information successfully extracted from the Public Health Case and Contact Management Solution (CCM) for all PHUs by PHO as of **December 27, 2021 at 1 p.m.** for cases reported from February 1, 2021 onwards and as of **December 23, 2021 at 9 a.m.** for cases reported up to January 31, 2021.
- CCM is a dynamic disease reporting system, which allows ongoing updates to data previously entered. As a result, data extracted from CCM represent a snapshot at the time of extraction and may differ from previous or subsequent reports.
- Ontario population estimate data were sourced from Statistics Canada. Population estimates 2001-2020: Table 1 annual population estimates by age and sex for July 1, 2001 to 2020, health regions, Ontario [unpublished data table]. Ottawa, ON: Government of Canada; 2021 [received April 22, 2021].
- COVID-19 test data were based on information from The Provincial COVID-19 Diagnostics Network, reported by member microbiology laboratories.

Data Caveats

- Due to changes in the availability of testing, driven by increasing COVID-19 cases related to the Omicron variant, case counts in this report are an underestimate of the true number of individuals with COVID-19 in Ontario. As such, data should be interpreted with caution.
- The data only represent cases reported to public health units and recorded in CCM. As a result, all counts will be subject to varying degrees of underreporting due to a variety of factors, such as disease awareness and medical care seeking behaviours, which may depend on severity of illness, clinical practice, changes in laboratory testing, and reporting behaviours.
- Data cleaning for older cases is incorporated on Mondays and Thursdays and may impact the case count published on Tuesdays and Fridays.
- Lags in CCM data entry due to weekend staffing may result in lower case counts than would otherwise be recorded.
- Only cases meeting the confirmed case classification as listed in the [MOH Case Definition – Coronavirus Disease \(COVID-19\) document](#) are included in the report counts from CCM.
- Cases of confirmed reinfection, as defined in the provincial case definitions, are counted as unique investigations.
- Case classification information may be updated for individuals with a positive result issued from a point-of-care assays.
- The number of tests performed does not reflect the number of specimens or persons tested. More than one test may be performed per specimen or per person. As such, the percentage of tests that were positive does not necessarily translate to the number of specimens or persons testing positive.
- Reported date is the date the case was reported to the public health unit.

- Case episode date represents an estimate of disease onset. This date is calculated based on the earliest date of symptom onset, specimen collection/test date, or the date reported to the public health unit.
- Resolved cases are determined only for COVID-19 cases that have not died. Cases that have died are considered fatal and not resolved. The following cases are classified as resolved:
 - Cases that are reported as 'recovered' in CCM
 - Cases that are not hospitalized and are 14 days past their episode date
 - Cases that are currently hospitalized (no hospital end date entered) and have a status of 'closed' in CCM (indicating public health unit follow-up is complete) and are 14 days past their symptom onset date or specimen collection date
- Hospitalization includes all cases for which a hospital admission date was reported or hospitalization/ICU was reported as 'Yes' at the time of data extraction. It includes cases that have been discharged from hospital as well as cases that are currently hospitalized. Emergency room visits are not included in the number of reported hospitalizations.
- ICU admission includes all cases for which an ICU admission date was reported at the time of data extraction. It is a subset of the count of hospitalized cases. It includes cases that have been treated or that are currently being treated in an ICU.
- Orientation of case counts by geography is based on the permanent health unit. This is equivalent to the diagnosing health unit (DHU) in iPHIS. DHU refers to the case's public health unit of residence at the time of illness onset and not necessarily the location of exposure. Cases for which the DHU was reported as MOH-PHO (to signify a case that is not a resident of Ontario) have been excluded from the analyses.
- Male/Female information presented in this report are sourced from the Sex field in CCM and are intended to represent sex assigned at birth. On October 14, 2021 changes were made in CCM to enable reporting on the Sex field where these data are supplemented by archived Male/Female information previously entered in the Gender field.
- Likely source of acquisition is determined by examining the epidemiologic link and epidemiologic link status fields in CCM. If no epidemiologic link is identified in those fields the risk factor fields are examined to determine whether a case travelled, was associated with a confirmed outbreak, was a contact of a case, had no known epidemiological link (sporadic community transmission) or was reported to have an unknown source/no information was reported. Some cases may have no information reported if the case is untraceable, was lost to follow-up or referred to FNIHB. Cases with multiple risk factors were assigned to a single likely acquisition source group which was determined hierarchically in the following order:
 - For cases with an episode date *on or after* April 1, 2020: Outbreak-associated > close contact of a confirmed case > travel > no known epidemiological link > information missing or unknown
 - For cases with an episode date *before* April 1, 2020: Travel > outbreak-associated > close contact of a confirmed case > no known epidemiological link > information missing or unknown
- Deaths are determined by using the outcome field in CCM. Any case marked 'Fatal' is included in the deaths data. The CCM field Type of Death is not used to further categorize the data.

- If the date of death is missing the outcome date field is used as a proxy for cases marked as 'Fatal' in the outcome field.
- COVID-19 cases from CCM for which the Classification and/or Disposition was reported as ENTERED IN ERROR, DOES NOT MEET DEFINITION, IGNORE, DUPLICATE or any variation on these values have been excluded. The provincial case count for COVID-19 may include some duplicate records, if these records were not identified and resolved.
- Ongoing outbreaks include all outbreaks that are 'Open' in CCM without a 'Declared Over Date' recorded, or where the outbreak started more than five months ago, even for outbreaks where the Outbreak Status value selected in CCM is 'OPEN'. The start of the outbreak is determined by the onset date of first case, or if missing the outbreak reported date, or else if that is also missing, then the outbreak created date.
- 'Long-term care home residents' includes cases that reported 'Yes' to the risk factor 'Resident of a long-term care home'; or 'Yes' to the risk factor 'Resident of nursing home or other chronic care facility' and reported to be part of an outbreak assigned as a long-term care home (via the Outbreak number or case comments field); or were reported to be part of an outbreak assigned as a long-term care home (via the outbreak number or case comments field) with an age over 70 years and did not report 'No' to the risk factors 'Resident of long-term care home' or 'Resident of nursing home or other chronic care facility'. 'Long-term care home residents' excludes cases that reported 'Yes' to any of the health care worker occupational risk factors.
- The 'health care workers' variable includes cases that reported 'Yes' to any of the occupation of health care worker, doctor, nurse, dentist, dental hygienist, midwife, other medical technicians, personal support worker, respiratory therapist, first responder.
- 'Health care workers associated with long-term care outbreaks' includes 'health care workers' reported to be part of an outbreak assigned as a long-term care home (via the outbreak number or case comments field). Excludes cases that reported 'Yes' to risk factors 'Resident of long-term care home' or 'Resident of nursing home or other chronic care facility' and 'Yes' to the calculated 'health care workers' variable.
- Percent change is calculated by taking the difference between the current period (i.e., daily count or sum of the daily count over a 7-day period) and previous period (i.e., daily count or sum of the daily count over a 7-day period), divided by the previous period.
- Public Health Ontario conducts testing and genomic analyses for SARS-CoV-2 positive specimens using the criteria outlined here: <https://www.publichealthontario.ca/en/laboratory-services/test-information-index/covid-19-voc>
- Lineage nomenclature is dynamic. PANGO lineage naming and assignment may change as more samples are sequenced and analyzed.
- Variant status may be updated based on scientific evidence. Variants designated as a VOC in Canada is available on the [Public Health Agency of Canada's SARS-CoV-2 Variants webpage](#).
- The laboratory detection of a variant of concern is a multi-step process. Samples that test positive for SARS-CoV-2 and have a cycle threshold (Ct) value ≤ 30 , may then undergo genomic analyses to identify the VOC lineage.
- If a VOC is identified through genomic analysis cases initially classified as a mutation may be updated and moved to the appropriate lineage (e.g. B.1.1.529, B.1.617.2)

Appendix A

Table A1. Weekly rates of confirmed COVID-19 cases per 100,000 population over recent rolling 7-day periods, by reported date and public health unit: Ontario, December 11 to December 24, 2021

Public Health Unit Name	Dec 12 to Dec 18	Dec 13 to Dec 19	Dec 14 to Dec 20	Dec 15 to Dec 21	Dec 16 to Dec 22	Dec 17 to Dec 23	Dec 18 to Dec 24	% change from Dec 12 – Dec 18 to Dec 18 – Dec 24
NORTH WEST								
Northwestern Health Unit	126.9	130.6	140.4	149.0	155.2	173.7	183.5	+44.6%
Thunder Bay District Health Unit	31.1	33.6	36.8	36.8	46.9	58.3	70.4	+126.4%
NORTH EAST								
Algoma Public Health	134.9	132.4	114.6	110.3	116.3	131.5	128.1	-5.0%
North Bay Parry Sound District Health Unit	30.9	38.7	44.1	65.0	83.5	120.6	137.7	+345.6%
Porcupine Health Unit	61.2	64.7	77.6	98.8	161.2	222.4	227.1	+271.1%
Public Health Sudbury & Districts	112.5	112.5	122.3	120.8	133.0	170.5	158.8	+41.2%
Timiskaming Health Unit	156.4	156.4	132.8	141.7	150.5	162.3	147.6	-5.6%
EASTERN								
Ottawa Public Health	155.8	184.3	210.5	237.3	277.2	317.3	365.9	+134.9%
Eastern Ontario Health Unit	88.0	93.6	99.1	134.3	180.2	235.8	299.3	+240.1%
Hastings Prince Edward Public Health	152.8	158.5	181.7	207.7	238.4	279.5	323.4	+111.6%
Kingston, Frontenac and Lennox & Addington Public Health	496.6	487.5	502.3	499.5	467.4	477.0	503.8	+1.4%

Public Health Unit Name	Dec 12 to Dec 18	Dec 13 to Dec 19	Dec 14 to Dec 20	Dec 15 to Dec 21	Dec 16 to Dec 22	Dec 17 to Dec 23	Dec 18 to Dec 24	% change from Dec 12 – Dec 18 to Dec 18 – Dec 24
Leeds, Grenville & Lanark District Health Unit	136.7	150.0	157.8	181.7	212.8	247.3	282.3	+106.5%
Renfrew County and District Health Unit	33.2	41.5	47.0	70.1	77.4	84.8	113.4	+241.6%
CENTRAL EAST								
Durham Region Health Department	119.1	129.2	152.8	179.6	207.2	254.3	307.6	+158.3%
Haliburton, Kawartha, Pine Ridge District Health Unit	57.7	64.0	72.4	88.6	107.5	127.9	168.3	+191.7%
Peel Public Health	84.2	102.1	117.0	135.1	177.3	231.6	273.3	+224.6%
Peterborough Public Health	64.1	77.6	88.4	118.8	172.8	226.2	252.5	+293.9%
Simcoe Muskoka District Health Unit	143.1	150.9	157.3	172.5	186.8	206.0	234.1	+63.6%
York Region Public Health	122.5	137.8	161.1	186.5	219.0	268.7	331.3	+170.4%
TORONTO								
Toronto Public Health	145.7	172.2	199.5	234.0	282.4	356.9	411.2	+182.2%
SOUTH WEST								
Chatham-Kent Public Health	127.6	134.1	121.0	133.2	130.4	149.1	171.6	+34.5%
Grey Bruce Health Unit	91.4	100.5	108.4	138.0	152.1	185.1	225.4	+146.6%
Huron Perth Public Health	81.4	73.8	81.4	85.5	101.2	121.7	157.3	+93.2%
Lambton Public Health	125.6	123.3	142.9	135.4	174.5	223.4	282.8	+125.2%
Middlesex-London Health Unit	124.0	131.0	154.9	183.3	215.6	270.7	302.2	+143.7%

Public Health Unit Name	Dec 12 to Dec 18	Dec 13 to Dec 19	Dec 14 to Dec 20	Dec 15 to Dec 21	Dec 16 to Dec 22	Dec 17 to Dec 23	Dec 18 to Dec 24	% change from Dec 12 – Dec 18 to Dec 18 – Dec 24
Southwestern Public Health	112.4	126.5	132.0	141.2	156.2	188.2	203.3	+80.9%
Windsor-Essex County Health Unit	139.5	143.6	149.9	145.7	153.2	168.9	179.4	+28.6%
CENTRAL WEST								
Brant County Health Unit	106.8	111.4	119.2	119.8	134.8	194.7	223.4	+109.2%
City of Hamilton Public Health Services	136.3	150.2	170.7	202.2	242.9	319.9	407.8	+199.2%
Haldimand-Norfolk Health Unit	110.8	115.0	111.7	121.7	144.2	220.0	248.3	+124.1%
Halton Region Public Health	171.3	199.5	230.9	251.4	306.4	392.3	449.9	+162.6%
Niagara Region Public Health	103.0	104.8	116.0	129.1	146.8	194.3	218.8	+112.4%
Region of Waterloo Public Health and Emergency Services	107.7	120.4	145.2	149.2	168.5	199.4	248.5	+130.7%
Wellington-Dufferin-Guelph Public Health	134.9	146.5	160.3	180.1	213.8	260.3	301.0	+123.1%
TOTAL ONTARIO	128.3	143.5	162.1	183.6	216.5	267.3	311.6	+142.9%

Note: Rates are based on the sum of the daily case counts during the date ranges specified in each column.

Data Source: CCM

Table A2. Cumulative* count of confirmed COVID-19 cases with lineage identified by public health unit: Ontario, as of December 27, 2021**

Public Health Unit Name	Lineage B.1.1.7 (Alpha)	Lineage B.1.351 (Beta)	Lineage P.1 (Gamma)	Lineage B.1.617.2 (Delta)	Lineage B.1.1.529 (Omicron)
Algoma Public Health	0	0	0	297	0
Brant County Health Unit	0	0	0	369	5
Chatham-Kent Public Health	0	0	0	240	0
City of Hamilton Public Health Services	0	0	0	782	56
Durham Region Health Department	0	0	0	703	54
Eastern Ontario Health Unit	0	0	0	192	7
Grey Bruce Health Unit	0	0	0	113	4
Haldimand-Norfolk Health Unit	0	0	0	389	0
Haliburton, Kawartha, Pine Ridge District Health Unit	0	0	0	99	3
Halton Region Public Health	0	0	0	557	134
Hastings Prince Edward Public Health	0	0	0	268	6
Huron Perth Public Health	0	0	0	192	2
Kingston, Frontenac and Lennox & Addington Public Health	0	0	0	705	258
Lambton Public Health	0	0	0	179	0
Leeds, Grenville & Lanark District Health Unit	0	0	0	231	50

Public Health Unit Name	Lineage B.1.1.7 (Alpha)	Lineage B.1.351 (Beta)	Lineage P.1 (Gamma)	Lineage B.1.617.2 (Delta)	Lineage B.1.1.529 (Omicron)
Middlesex-London Health Unit	0	0	0	411	34
Niagara Region Public Health	0	0	0	210	9
North Bay Parry Sound District Health Unit	0	0	0	62	3
Northwestern Health Unit	0	0	0	34	0
Ottawa Public Health	1	0	0	810	162
Peel Public Health	0	0	1	1,083	137
Peterborough Public Health	0	0	0	117	2
Porcupine Health Unit	0	0	0	46	0
Public Health Sudbury & Districts	0	0	0	563	0
Region of Waterloo Public Health and Emergency Services	0	0	0	704	61
Renfrew County and District Health Unit	0	0	0	57	5
Simcoe Muskoka District Health Unit	0	0	0	1,593	84
Southwestern Public Health	0	0	0	622	1
Thunder Bay District Health Unit	0	0	0	233	7
Timiskaming Health Unit	0	0	0	106	0
Toronto Public Health	0	0	1	2,270	502
Wellington-Dufferin-Guelph Public Health	0	0	0	306	38

Public Health Unit Name	Lineage B.1.1.7 (Alpha)	Lineage B.1.351 (Beta)	Lineage P.1 (Gamma)	Lineage B.1.617.2 (Delta)	Lineage B.1.1.529 (Omicron)
Windsor-Essex County Health Unit	0	0	0	1,267	2
York Region Public Health	0	0	0	1,261	101
TOTAL ONTARIO	1	0	2	17,071	1,727

Note: Interpret the VOC trends with caution due to the varying time required to complete genomic analysis following the initial positive test for SARS-CoV-2. Due to the nature of the genomic analysis, test results may be completed in batches. Data corrections or updates can result in case records being removed and/or updated and may result in totals differing from past publicly reported case counts. Data for calculating the change in cases and the cumulative case counts uses data from the Investigation Lineage field only. Changes to the VOC testing algorithm may impact counts and trends. Further details can be found in the [data caveats](#) section.

*Cumulative counts include cases with a reported date since October 31, 2021 and may be impacted by lags in case identification, reporting and/or data entry.

**Includes all confirmed COVID-19 cases with a lineage identified by genomic analysis and reported in CCM as of the extraction time. B.1.617.2 (Delta) includes all Delta sublineage cases identified by genomic analysis.

Data Source: CCM

Citation

Ontario Agency for Health Protection and Promotion (Public Health Ontario). Epidemiologic summary: COVID-19 in Ontario – January 15, 2020 to December 27, 2021. Toronto, ON: Queen’s Printer for Ontario; 2021.

Disclaimer

This document was developed by Public Health Ontario (PHO). PHO provides scientific and technical advice to Ontario’s government, public health organizations and health care providers. PHO’s work is guided by the current best available evidence at the time of publication. The application and use of this document is the responsibility of the user. PHO assumes no liability resulting from any such application or use. This document may be reproduced without permission for non-commercial purposes only and provided that appropriate credit is given to PHO. No changes and/or modifications may be made to this document without express written permission from PHO.

For Further Information

For more information, cd@oahpp.ca.

Public Health Ontario

Public Health Ontario is an agency of the Government of Ontario dedicated to protecting and promoting the health of all Ontarians and reducing inequities in health. Public Health Ontario links public health practitioners, front-line health workers and researchers to the best scientific intelligence and knowledge from around the world.

For more information about PHO, visit publichealthontario.ca.



©Queen’s Printer for Ontario, 2021