

DAILY EPIDEMIOLOGICAL SUMMARY

COVID-19 in Ontario: January 15, 2020 to November 26, 2021

This report includes the most current information available from CCM as of **November 26, 2021**.

Please visit the interactive [Ontario COVID-19 Data Tool](#) to explore recent COVID-19 data by public health unit, age group, sex, and trends over time.

A [weekly summary report](#) is available with additional information to complement the daily report.

This **daily** report provides an epidemiologic summary of recent COVID-19 activity in Ontario. The change in cases is determined by taking the cumulative difference between the current day and the previous day.

Highlights

- There are a total of 616,051 confirmed cases of COVID-19 in Ontario reported to date.
- Compared to the previous day, this represents:
 - An increase of 854 confirmed cases (percent change of -7.9%)
 - An increase of 2* deaths (percent change of -60.0%)
 - An increase of 580 resolved cases (percent change of -12.9%)

* This number only includes deaths that have occurred in the last month.

In this document, the term 'change in cases' refers to cases publicly reported by the province for a given day. Data corrections or updates can result in case records being removed and or updated from past reports and may result in subset totals for updated case counts (i.e., age group, sex) differing from the overall updated case counts.

The term public health unit reported date in this document refers to the date local public health units were first notified of the case.

Case Characteristics

Table 1a. Summary of recent confirmed cases of COVID-19: Ontario

	Change in cases November 25, 2021	Change in cases November 26, 2021	Percentage change November 26, 2021 compared to November 25, 2021	Cumulative case count as of November 26, 2021
Total number of cases	927	854	-7.9%	616,051
Number of deaths	5	2	-60.0%	9,993
Number resolved	666	580	-12.9%	599,979

Note: The number of cases publicly reported by the province each day may not align with case counts reported to public health on a given day; public health unit reported date refers to the date local public health was first notified of the case. Data corrections or updates can result in case records being removed and or updated from past reports. The number of deaths presented in the change in cases column for each day only includes deaths that occurred in the last 30 days.

* There was 1 death that occurred more than one month ago added to the cumulative count based on data cleaning.

Data Source: CCM

Table 1b. Summary of recent confirmed cases of COVID-19 by age group and sex: Ontario

	Change in cases November 25, 2021	Change in cases November 26, 2021	Cumulative case count as of November 26, 2021
Sex: Male	450	429	307,940
Sex: Female	472	420	305,936
Ages: 0-4	51	44	17,925
Ages: 5-11	198	183	34,575
Ages: 12-19	76	65	54,765
Ages: 20-39	271	226	230,425
Ages: 40-59	214	218	172,010
Ages: 60-79	107	101	79,679
Ages: 80 and over	10	17	26,565

Note: Not all cases have a reported age or sex reported. Data corrections or updates can result in case records being removed and or updated from past reports and may result in subset totals (i.e., age group, sex) differing from past publicly reported case counts.

Data Source: CCM

Table 2. Summary of recent confirmed cases of COVID-19 in long-term care homes: Ontario

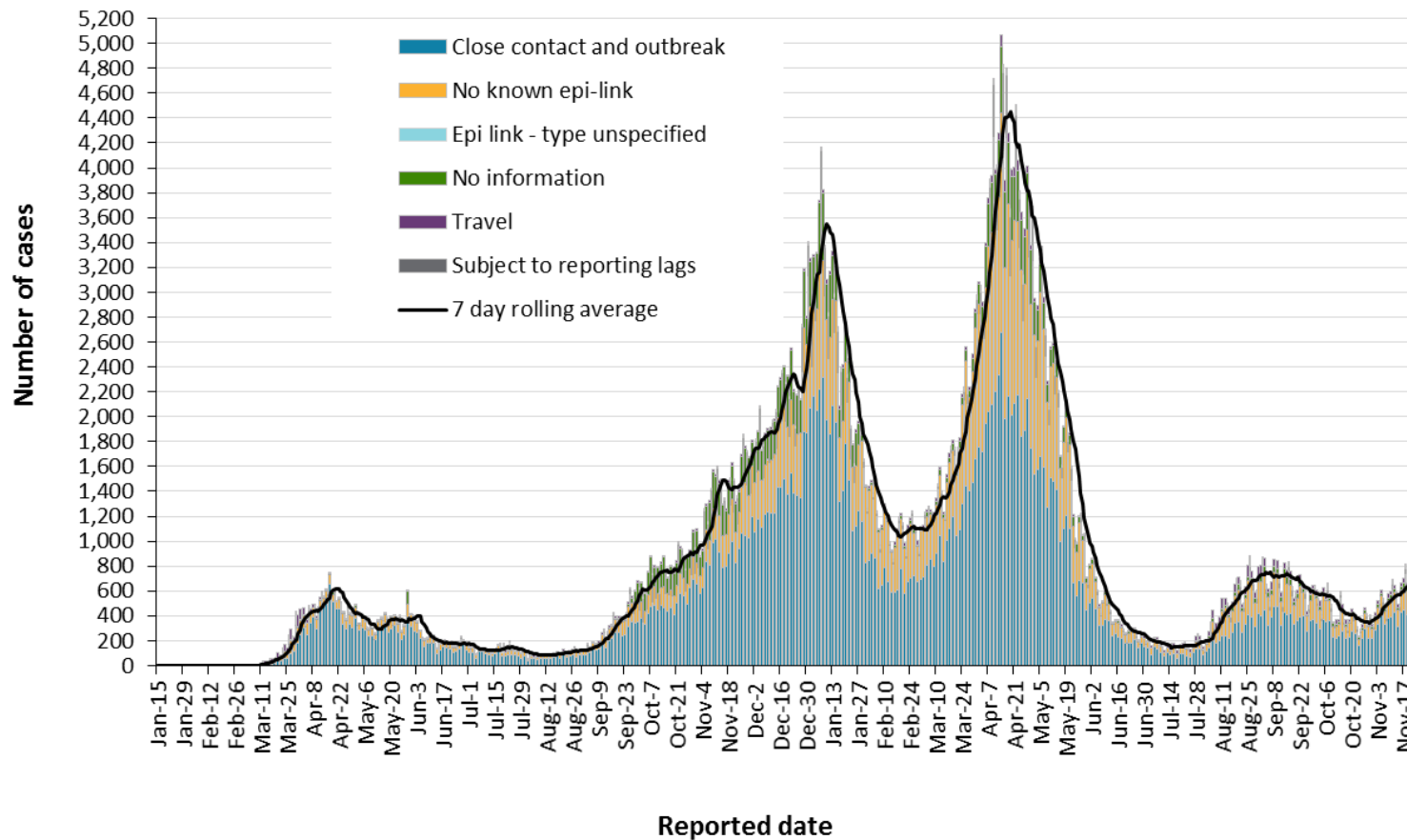
Long-term care home cases	Change in cases November 25, 2021	Change in cases November 26, 2021	Cumulative case count as of November 26, 2021
Residents	0	1	15,654
Health care workers	0	2	7,414
Deaths among residents	1	1	4,025
Deaths among health care workers	0	0	10

Note: Information on how long-term care home residents and health care workers are identified is available in the [technical notes](#). Also, the change in cases in these categories may represent existing case records that have been updated.

Data Source: CCM

Time

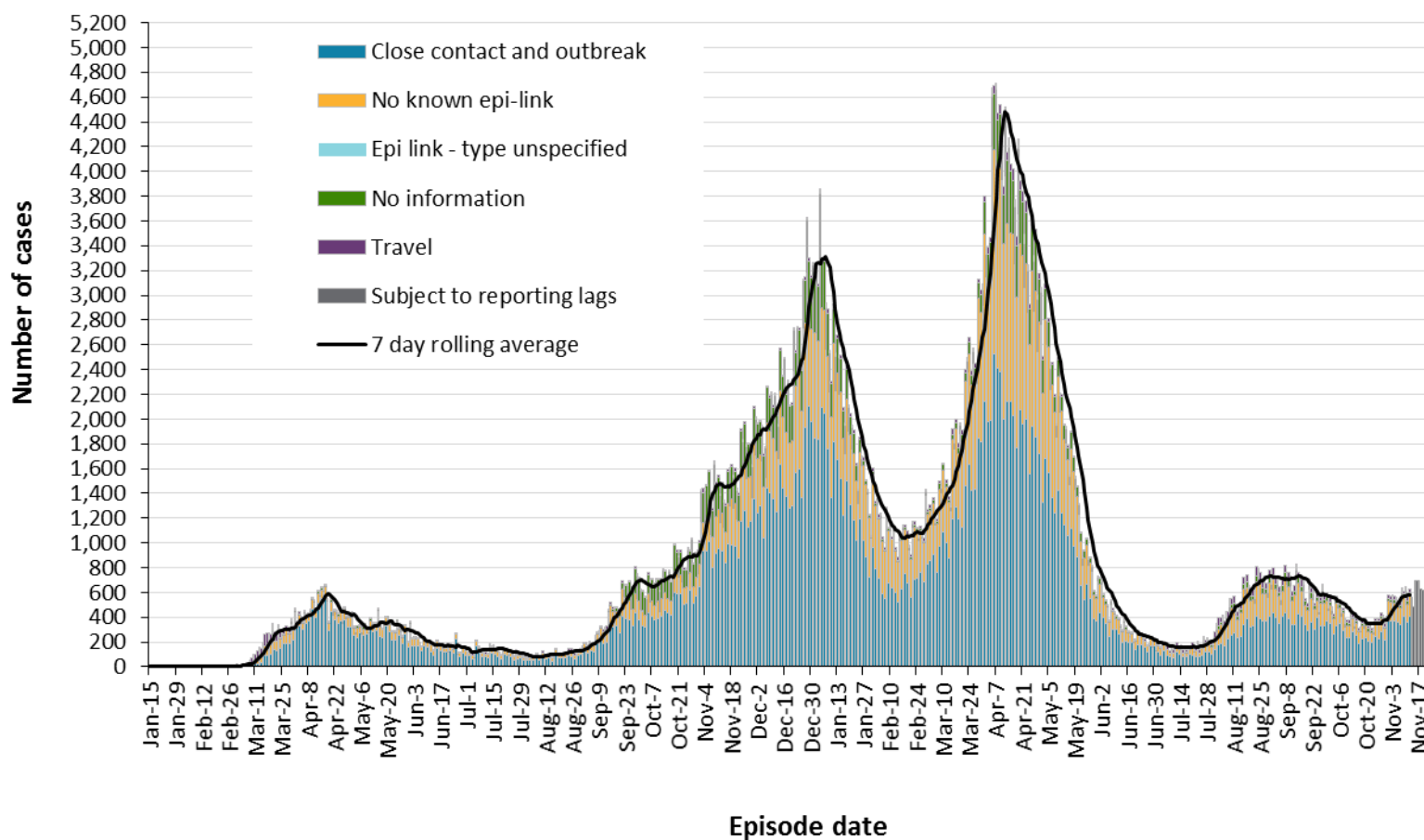
Figure 1. Confirmed cases of COVID-19 by likely acquisition and public health unit reported date: Ontario, January 15, 2020 to November 26, 2021



Data Source: CCM

COVID-19 in Ontario: January 15, 2020 to November 26, 2021

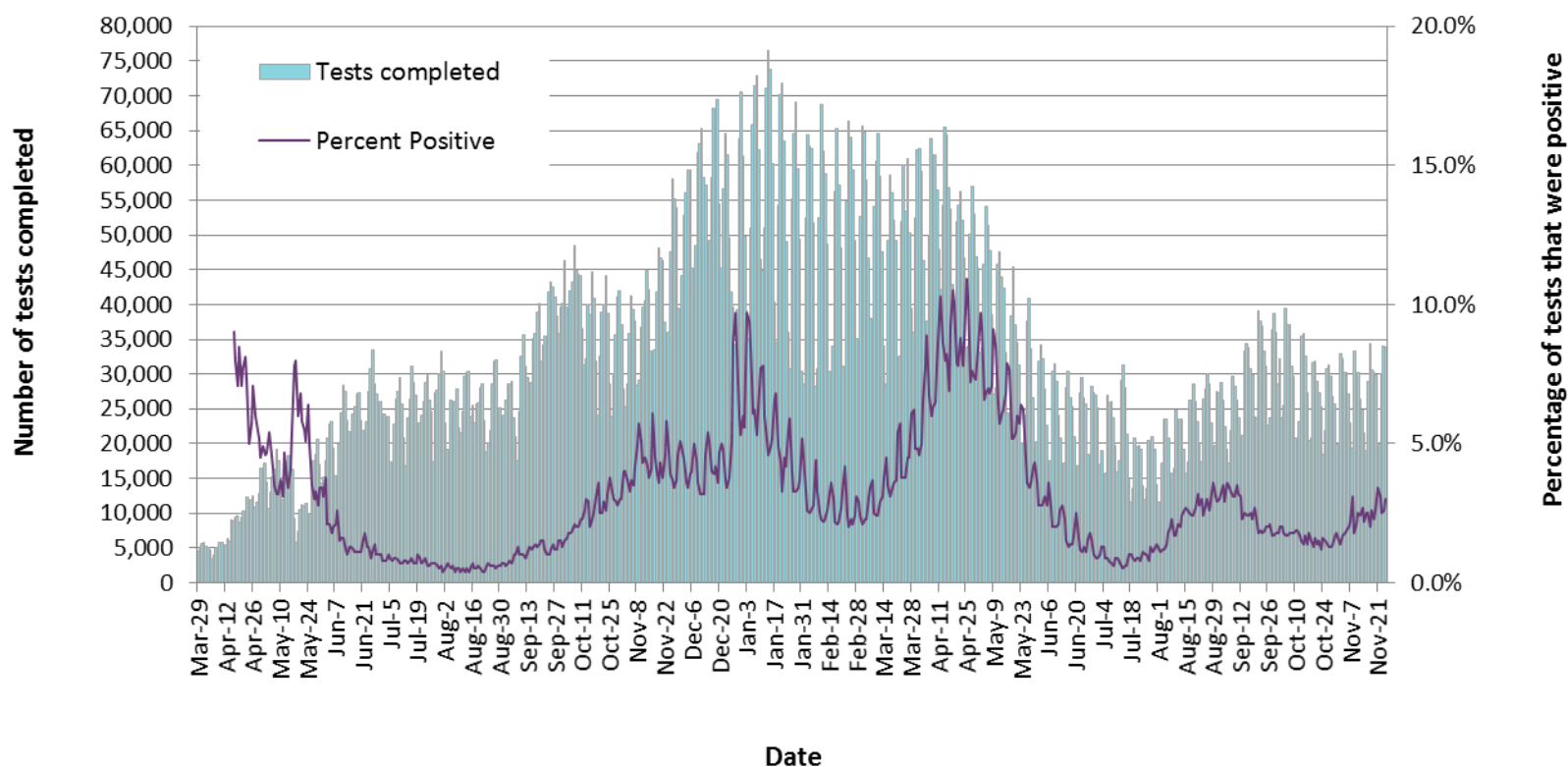
Figure 2. Confirmed cases of COVID-19 by likely acquisition and approximation of symptom onset date: Ontario, January 15, 2020 to November 26, 2021



Note: Not all cases may have an episode date and those without one are not included in the figure. Episode date is defined and available in the [technical notes](#).

Data Source: CCM

Figure 3. Number of COVID-19 tests completed and percent positivity: Ontario, March 29, 2020 to November 25, 2021

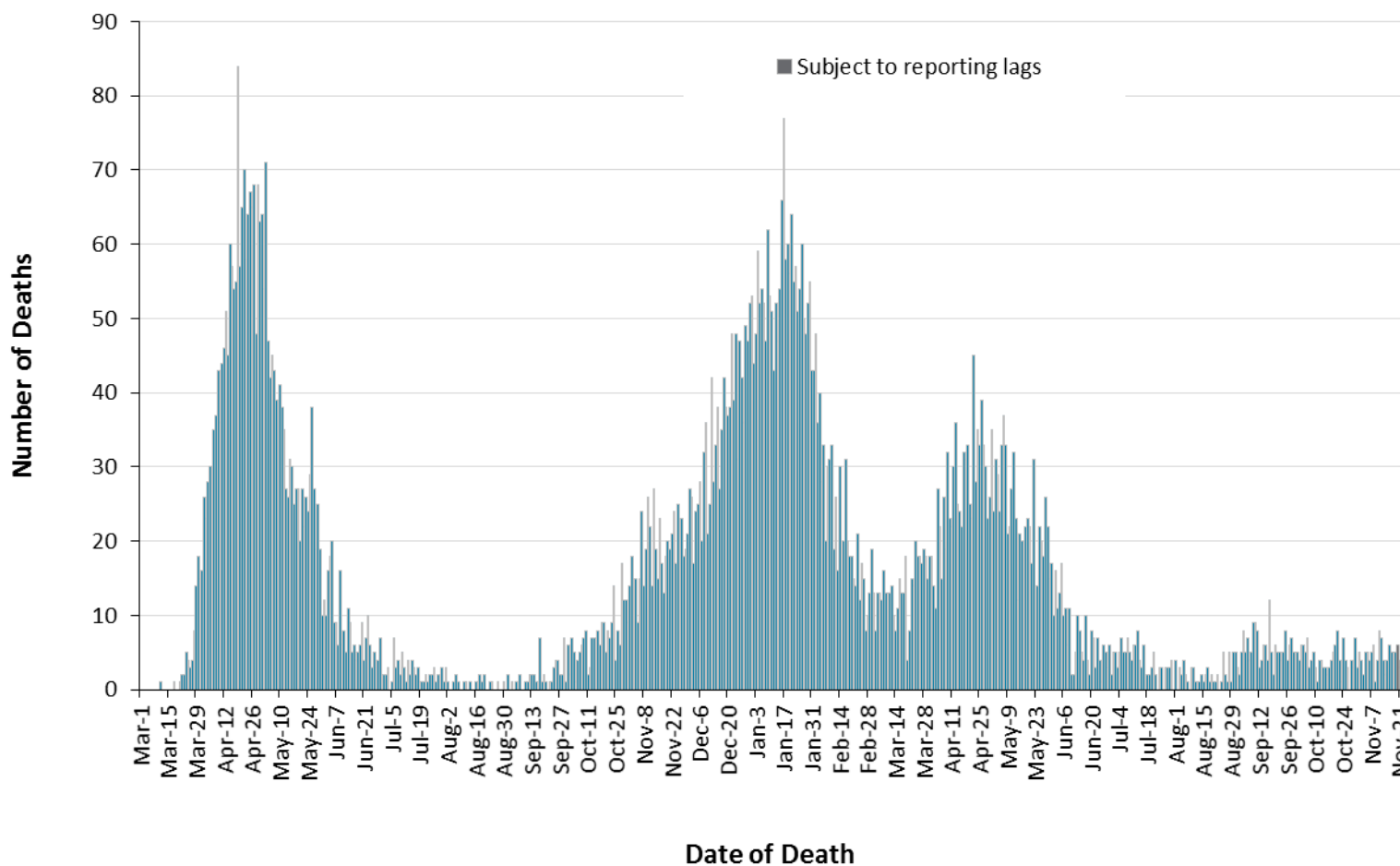


Note: The number of tests performed does not reflect the number of specimens or persons tested. More than one test may be performed per specimen or per person. As such, the percentage of tests that were positive does not necessarily translate to the number of specimens or persons testing positive.

Data Source: The Provincial COVID-19 Diagnostics Network, data reported by member microbiology laboratories.

Severity

Figure 4. Confirmed deaths among COVID-19 cases by date of death: Ontario, March 1, 2020 to November 26, 2021



Note: Cases without a death date are not included in the figure.

Data Source: CCM

Table 3. Confirmed cases of COVID-19 by severity: Ontario

	Cumulative case count as of November 26, 2021	Percentage of all cases
Cumulative deaths reported (please note there may be a reporting delay for deaths)	9,993	1.6%
Deaths reported in ages: 19 and under	7	<0.1%
Deaths reported in ages: 20-39	106	<0.1%
Deaths reported in ages: 40-59	695	0.4%
Deaths reported in ages: 60-79	3,286	4.1%
Deaths reported in ages: 80 and over	5,898	22.2%
Ever in ICU	6,166	1.0%
Ever hospitalized	31,253	5.1%

Note: Not all cases have an age reported. Data corrections or updates can result in case records being removed and/or updated and may result in totals differing from past publicly reported case counts. Percentage of deaths reported for each age group is calculated using all cases in the age group as the denominator.

Data Source: CCM

Geography

Table 4. Summary of recent confirmed cases of COVID-19 by public health unit and region: Ontario

Public Health Unit Name	Change in cases November 25, 2021	Change in cases November 26, 2021	Cumulative case count	Cumulative rate per 100,000 population
Northwestern Health Unit	1	3	1,226	1,510.1
Thunder Bay District Health Unit	13	18	3,538	2,243.4
TOTAL NORTH WEST	14	21	4,764	1,994.2
Algoma Public Health	22	38	1,011	857.9
North Bay Parry Sound District Health Unit	-1	2	903	698.3
Porcupine Health Unit	5	-1	2,272	2,672.9
Public Health Sudbury & Districts	46	43	3,666	1,786.1
Timiskaming Health Unit	17	9	362	1,068.3
TOTAL NORTH EAST	89	91	8,214	1,437.8
Ottawa Public Health	53	44	31,866	3,054.8
Eastern Ontario Health Unit	17	12	5,855	2,712.4
Hastings Prince Edward Public Health	22	15	1,668	965.1
Kingston, Frontenac and Lennox & Addington Public Health	40	33	2,485	1,187.7
Leeds, Grenville & Lanark District Health Unit	4	3	2,055	1,142.0
Renfrew County and District Health Unit	3	5	888	818.6
TOTAL EASTERN	139	112	44,817	2,322.8
Durham Region Health Department	41	27	28,027	3,939.6

Public Health Unit Name	Change in cases November 25, 2021	Change in cases November 26, 2021	Cumulative case count	Cumulative rate per 100,000 population
Haliburton, Kawartha, Pine Ridge District Health Unit	3	4	2,554	1,339.1
Peel Public Health	54	47	116,999	7,482.4
Peterborough Public Health	8	6	2,002	1,351.6
Simcoe Muskoka District Health Unit	73	107	15,508	2,565.4
York Region Public Health	52	48	58,562	4,879.1
TOTAL CENTRAL EAST	231	239	223,652	5,061.5
Toronto Public Health	129	97	177,863	5,951.8
TOTAL TORONTO	129	97	177,863	5,951.8
Chatham-Kent Public Health	8	9	2,930	2,748.1
Grey Bruce Health Unit	10	11	2,459	1,396.0
Huron Perth Public Health	17	8	2,560	1,750.5
Lambton Public Health	14	10	4,358	3,277.4
Middlesex-London Health Unit	23	17	14,812	2,900.8
Southwestern Public Health	25	21	5,294	2,418.4
Windsor-Essex County Health Unit	62	82	21,558	5,002.5
TOTAL SOUTH WEST	159	158	53,971	3,133.4
Brant County Health Unit	16	17	4,896	3,188.4
City of Hamilton Public Health Services	29	21	25,650	4,409.3
Haldimand-Norfolk Health Unit	14	24	3,378	2,814.8
Halton Region Public Health	33	22	19,633	3,215.5

Public Health Unit Name	Change in cases November 25, 2021	Change in cases November 26, 2021	Cumulative case count	Cumulative rate per 100,000 population
Niagara Region Public Health	18	16	18,815	3,905.7
Region of Waterloo Public Health and Emergency Services	44	23	20,833	3,442.2
Wellington-Dufferin-Guelph Public Health	12	13	9,565	3,065.8
TOTAL CENTRAL WEST	166	136	102,770	3,587.3
TOTAL ONTARIO	927	854	616,051	4,181.1

Notes: Health units with data corrections or updates could result in records being removed from totals, leading to negative or zero counts.

Data Source: CCM

Outbreaks

Table 5. Summary of recent confirmed COVID-19 outbreaks reported in long-term care homes, retirement homes and hospitals by status: Ontario

Institution type	Change in outbreaks November 25, 2021	Change in outbreaks November 26, 2021	Number of ongoing outbreaks	Cumulative number of outbreaks reported
Long-term care homes	0	-1	5	1,551
Retirement homes	0	0	9	922
Hospitals	0	0	11	619

Note: Ongoing outbreaks include all outbreaks that are 'Open' in CCM without a 'Declared Over Date' recorded, or where the outbreak started more than five months ago, even for outbreaks where the Outbreak Status value selected in CCM is 'OPEN'. The start of the outbreak is determined by the onset date of first case, or if missing the outbreak reported date, or else if that is also missing, then the outbreak created date.

Data Source: CCM

Technical Notes

Data Sources

- The data for this report were based on information successfully extracted from the Public Health Case and Contact Management Solution (CCM) for all PHUs by PHO as of **November 26, 2021 at 1 p.m.** for cases reported from February 1, 2021 onwards and as of **November 25, 2021 at 9 a.m.** for cases reported up to January 31, 2021.
- CCM is a dynamic disease reporting system, which allows ongoing updates to data previously entered. As a result, data extracted from CCM represent a snapshot at the time of extraction and may differ from previous or subsequent reports.
- Ontario population estimate data were sourced from Statistics Canada. Population estimates 2001-2020: Table 1 annual population estimates by age and sex for July 1, 2001 to 2020, health regions, Ontario [unpublished data table]. Ottawa, ON: Government of Canada; 2021 [received April 22, 2021].
- COVID-19 test data were based on information from The Provincial COVID-19 Diagnostics Network, reported by member microbiology laboratories.

Data Caveats

- The data only represent cases reported to public health units and recorded in CCM. As a result, all counts will be subject to varying degrees of underreporting due to a variety of factors, such as disease awareness and medical care seeking behaviours, which may depend on severity of illness, clinical practice, changes in laboratory testing, and reporting behaviours.
- Data cleaning for older cases is incorporated on Mondays and Thursdays and may impact the case count published on Tuesdays and Fridays.
- Lags in CCM data entry due to weekend staffing may result in lower case counts than would otherwise be recorded.
- Only cases meeting the confirmed case classification as listed in the [MOH Case Definition – Coronavirus Disease \(COVID-19\) document](#) are included in the report counts from CCM.
- Cases of confirmed reinfection, as defined in the provincial case definitions, are counted as unique investigations.
- Case classification information may be updated for individuals with a positive result issued from a point-of-care assays.
- The number of tests performed does not reflect the number of specimens or persons tested. More than one test may be performed per specimen or per person. As such, the percentage of tests that were positive does not necessarily translate to the number of specimens or persons testing positive.
- Reported date is the date the case was reported to the public health unit.
- Case episode date represents an estimate of disease onset. This date is calculated based on the earliest date of symptom onset, specimen collection/test date, or the date reported to the public health unit.

- Resolved cases are determined only for COVID-19 cases that have not died. Cases that have died are considered fatal and not resolved. The following cases are classified as resolved:
 - Cases that are reported as 'recovered' in CCM
 - Cases that are not hospitalized and are 14 days past their episode date
 - Cases that are currently hospitalized (no hospital end date entered) and have a status of 'closed' in CCM (indicating public health unit follow-up is complete) and are 14 days past their symptom onset date or specimen collection date
- Hospitalization includes all cases for which a hospital admission date was reported or hospitalization/ICU was reported as 'Yes' at the time of data extraction. It includes cases that have been discharged from hospital as well as cases that are currently hospitalized. Emergency room visits are not included in the number of reported hospitalizations.
- ICU admission includes all cases for which an ICU admission date was reported at the time of data extraction. It is a subset of the count of hospitalized cases. It includes cases that have been treated or that are currently being treated in an ICU.
- Orientation of case counts by geography is based on the permanent health unit. This is equivalent to the diagnosing health unit (DHU) in iPHIS. DHU refers to the case's public health unit of residence at the time of illness onset and not necessarily the location of exposure. Cases for which the DHU was reported as MOH-PHO (to signify a case that is not a resident of Ontario) have been excluded from the analyses.
- Male/Female information presented in this report are sourced from the Sex field in CCM and are intended to represent sex assigned at birth. On October 14, 2021 changes were made in CCM to enable reporting on the Sex field where these data are supplemented by archived Male/Female information previously entered in the Gender field.
- Likely source of acquisition is determined by examining the epidemiologic link and epidemiologic link status fields in CCM. If no epidemiologic link is identified in those fields the risk factor fields are examined to determine whether a case travelled, was associated with a confirmed outbreak, was a contact of a case, had no known epidemiological link (sporadic community transmission) or was reported to have an unknown source/no information was reported. Some cases may have no information reported if the case is untraceable, was lost to follow-up or referred to FNIHB. Cases with multiple risk factors were assigned to a single likely acquisition source group which was determined hierarchically in the following order:
 - For cases with an episode date *on or after* April 1, 2020: Outbreak-associated > close contact of a confirmed case > travel > no known epidemiological link > information missing or unknown
 - For cases with an episode date *before* April 1, 2020: Travel > outbreak-associated > close contact of a confirmed case > no known epidemiological link > information missing or unknown
- Deaths are determined by using the outcome field in CCM. Any case marked 'Fatal' is included in the deaths data. The CCM field Type of Death is not used to further categorize the data.
 - If the date of death is missing the outcome date field is used as a proxy for cases marked as 'Fatal' in the outcome field.

- COVID-19 cases from CCM for which the Classification and/or Disposition was reported as ENTERED IN ERROR, DOES NOT MEET DEFINITION, IGNORE, DUPLICATE or any variation on these values have been excluded. The provincial case count for COVID-19 may include some duplicate records, if these records were not identified and resolved.
- Ongoing outbreaks include all outbreaks that are 'Open' in CCM without a 'Declared Over Date' recorded, or where the outbreak started more than five months ago, even for outbreaks where the Outbreak Status value selected in CCM is 'OPEN'. The start of the outbreak is determined by the onset date of first case, or if missing the outbreak reported date, or else if that is also missing, then the outbreak created date.
- 'Long-term care home residents' includes cases that reported 'Yes' to the risk factor 'Resident of a long-term care home'; or 'Yes' to the risk factor 'Resident of nursing home or other chronic care facility' and reported to be part of an outbreak assigned as a long-term care home (via the Outbreak number or case comments field); or were reported to be part of an outbreak assigned as a long-term care home (via the outbreak number or case comments field) with an age over 70 years and did not report 'No' to the risk factors 'Resident of long-term care home' or 'Resident of nursing home or other chronic care facility'. 'Long-term care home residents' excludes cases that reported 'Yes' to any of the health care worker occupational risk factors.
- The 'health care workers' variable includes cases that reported 'Yes' to any of the occupation of health care worker, doctor, nurse, dentist, dental hygienist, midwife, other medical technicians, personal support worker, respiratory therapist, first responder.
- 'Health care workers associated with long-term care outbreaks' includes 'health care workers' reported to be part of an outbreak assigned as a long-term care home (via the outbreak number or case comments field). Excludes cases that reported 'Yes' to risk factors 'Resident of long-term care home' or 'Resident of nursing home or other chronic care facility' and 'Yes' to the calculated 'health care workers' variable.
- Percent change is calculated by taking the difference between the current period (i.e., daily count or sum of the daily count over a 7-day period) and previous period (i.e., daily count or sum of the daily count over a 7-day period), divided by the previous period.

Appendix A

Table A1. Weekly rates of confirmed COVID-19 cases per 100,000 population over recent rolling 7-day periods, by reported date and public health unit: Ontario, November 11 to November 23, 2021

Public Health Unit Name	Nov 11 to Nov 17	Nov 12 to Nov 18	Nov 13 to Nov 19	Nov 14 to Nov 20	Nov 15 to Nov 21	Nov 16 to Nov 22	Nov 17 to Nov 23	% change from Nov 11 – Nov 17 to Nov 17 – Nov 23
NORTH WEST								
Northwestern Health Unit	2.5	8.6	13.5	19.7	18.5	20.9	20.9	+736.0%
Thunder Bay District Health Unit	7.0	9.5	12.7	15.9	19.7	21.6	24.7	+252.9%
NORTH EAST								
Algoma Public Health	137.5	138.3	129.0	139.2	156.1	161.2	159.5	+16.0%
North Bay Parry Sound District Health Unit	14.7	15.5	17.0	17.0	15.5	16.2	14.7	0.0%
Porcupine Health Unit	18.8	17.6	14.1	12.9	11.8	12.9	9.4	-50.0%
Public Health Sudbury & Districts	97.0	100.8	113.5	121.3	117.4	116.0	113.0	+16.5%
Timiskaming Health Unit	73.8	82.6	106.2	144.6	153.5	171.2	188.9	+156.0%
EASTERN								
Ottawa Public Health	29.8	29.0	26.7	27.3	25.6	24.8	23.5	-21.1%
Eastern Ontario Health Unit	29.6	27.8	33.4	40.3	39.8	38.0	36.6	+23.6%
Hastings Prince Edward Public Health	15.0	26.0	26.6	34.7	39.9	45.7	52.1	+247.3%
Kingston, Frontenac and Lennox & Addington Public Health	80.3	87.5	81.7	80.3	83.2	76.5	82.7	+3.0%

Public Health Unit Name	Nov 11 to Nov 17	Nov 12 to Nov 18	Nov 13 to Nov 19	Nov 14 to Nov 20	Nov 15 to Nov 21	Nov 16 to Nov 22	Nov 17 to Nov 23	% change from Nov 11 – Nov 17 to Nov 17 – Nov 23
Leeds, Grenville & Lanark District Health Unit	24.5	26.7	23.9	26.1	25.0	22.2	22.2	-9.4%
Renfrew County and District Health Unit	16.6	18.4	19.4	21.2	21.2	23.0	24.0	+44.6%
CENTRAL EAST								
Durham Region Health Department	26.8	24.7	24.9	25.6	26.4	26.7	26.0	-3.0%
Haliburton, Kawartha, Pine Ridge District Health Unit	5.2	6.3	5.8	7.9	7.9	6.3	8.4	+61.5%
Peel Public Health	17.7	17.8	18.5	17.8	18.6	19.2	20.3	+14.7%
Peterborough Public Health	15.5	16.2	16.2	18.9	20.3	23.0	20.9	+34.8%
Simcoe Muskoka District Health Unit	60.0	66.7	67.0	68.7	72.0	77.4	74.9	+24.8%
York Region Public Health	22.2	22.7	21.3	20.4	21.2	22.3	24.1	+8.6%
TORONTO								
Toronto Public Health	17.7	18.2	18.5	19.0	19.0	19.6	19.6	+10.7%
SOUTH WEST								
Chatham-Kent Public Health	47.8	47.8	50.6	51.6	53.5	50.6	54.4	+13.8%
Grey Bruce Health Unit	14.8	10.8	11.9	10.8	10.2	9.1	9.7	-34.5%
Huron Perth Public Health	36.9	36.9	35.6	36.9	30.1	29.4	29.4	-20.3%
Lambton Public Health	28.6	29.3	32.3	34.6	32.3	30.1	31.6	+10.5%
Middlesex-London Health Unit	18.0	19.0	20.0	19.4	21.0	22.1	21.2	+17.8%

Public Health Unit Name	Nov 11 to Nov 17	Nov 12 to Nov 18	Nov 13 to Nov 19	Nov 14 to Nov 20	Nov 15 to Nov 21	Nov 16 to Nov 22	Nov 17 to Nov 23	% change from Nov 11 – Nov 17 to Nov 17 – Nov 23
Southwestern Public Health	73.5	74.0	78.1	81.8	82.2	83.1	83.6	+13.7%
Windsor-Essex County Health Unit	65.0	68.9	68.0	70.3	72.4	72.9	77.5	+19.2%
CENTRAL WEST								
Brant County Health Unit	44.3	44.9	43.6	50.1	59.9	61.2	69.0	+55.8%
City of Hamilton Public Health Services	23.4	22.9	26.6	26.3	26.1	24.9	26.1	+11.5%
Haldimand-Norfolk Health Unit	85.0	95.0	96.7	99.2	95.0	87.5	87.5	+2.9%
Halton Region Public Health	17.2	17.7	16.9	17.7	19.8	19.0	21.1	+22.7%
Niagara Region Public Health	41.3	39.0	32.6	32.0	30.7	28.6	28.2	-31.7%
Region of Waterloo Public Health and Emergency Services	33.0	33.0	34.7	34.9	36.3	38.2	38.0	+15.2%
Wellington-Dufferin-Guelph Public Health	20.8	18.9	18.9	18.9	18.6	19.2	17.9	-13.9%
TOTAL ONTARIO	29.2	30.0	30.1	31.0	31.7	32.1	32.6	+11.6%

Note: Rates are based on the sum of the daily case counts during the date ranges specified in each column.

Data Source: CCM

Citation

Ontario Agency for Health Protection and Promotion (Public Health Ontario). Epidemiologic summary: COVID-19 in Ontario – January 15, 2020 to November 26, 2021. Toronto, ON: Queen’s Printer for Ontario; 2021.

Disclaimer

This document was developed by Public Health Ontario (PHO). PHO provides scientific and technical advice to Ontario’s government, public health organizations and health care providers. PHO’s work is guided by the current best available evidence at the time of publication. The application and use of this document is the responsibility of the user. PHO assumes no liability resulting from any such application or use. This document may be reproduced without permission for non-commercial purposes only and provided that appropriate credit is given to PHO. No changes and/or modifications may be made to this document without express written permission from PHO.

For Further Information

For more information, cd@oahpp.ca.

Public Health Ontario

Public Health Ontario is an agency of the Government of Ontario dedicated to protecting and promoting the health of all Ontarians and reducing inequities in health. Public Health Ontario links public health practitioners, front-line health workers and researchers to the best scientific intelligence and knowledge from around the world.

For more information about PHO, visit publichealthontario.ca.



©Queen’s Printer for Ontario, 2021