

DAILY EPIDEMIOLOGICAL SUMMARY

COVID-19 in Ontario: January 15, 2020 to May 20, 2021

This report includes the most current information available from CCM as of **May 20, 2021**.

Please visit the interactive [Ontario COVID-19 Data Tool](#) to explore recent COVID-19 data by public health unit, age group, sex, and trends over time.

A [weekly summary report](#) is available with additional information to complement the daily report.

This **daily** report provides an epidemiologic summary of recent COVID-19 activity in Ontario. The change in cases is determined by taking the cumulative difference between the current day and the previous day.

Highlights

- There are a total of 518,980 confirmed cases of COVID-19 in Ontario reported to date.
- Compared to the previous day, this represents:
 - An increase of 1,890 confirmed cases (percent change of -21.3%)
 - An increase of 27 deaths (percent change of 0.0%)
 - An increase of 2,689 resolved cases (percent change of -2.7%)

In this document, the term 'change in cases' refers to cases publicly reported by the province for a given day. Data corrections or updates can result in case records being removed and or updated from past reports and may result in subset totals for updated case counts (i.e., age group, gender) differing from the overall updated case counts.

The term public health unit reported date in this document refers to the date local public health units were first notified of the case.

Case Characteristics

Table 1a. Summary of recent confirmed cases of COVID-19: Ontario

	Change in cases May 19, 2021	Change in cases May 20, 2021	Percentage change May 20, 2021 compared to May 19, 2021	Cumulative case count as of May 20, 2021
Total number of cases	2,400	1,890	-21.3%	518,980
Number of deaths	27	27	0.0%	8,579
Number resolved	2,763	2,689	-2.7%	488,201

Note: The number of cases publicly reported by the province each day may not align with case counts reported to public health on a given day; public health unit reported date refers to the date local public health was first notified of the case. Data corrections or updates can result in case records being removed and or updated from past reports.

Data Source: CCM

Table 1b. Summary of recent confirmed cases of COVID-19 by age group and gender: Ontario

	Change in cases May 19, 2021	Change in cases May 20, 2021	Cumulative case count as of May 20, 2021
Gender: Male	1,165	969	258,182
Gender: Female	1,185	907	256,647
Ages: 19 and under	494	397	81,856
Ages: 20-39	981	801	193,765
Ages: 40-59	628	468	149,097
Ages: 60-79	241	184	69,665
Ages: 80 and over	57	41	24,499

Note: Not all cases have a reported age or gender reported. Data corrections or updates can result in case records being removed and or updated from past reports and may result in subset totals (i.e., age group, gender) differing from past publicly reported case counts.

Data Source: CCM

Table 2. Summary of recent confirmed cases of COVID-19 in school aged children by age group, August 30, 2020 to May 20, 2021: Ontario

	Change in cases May 19, 2021	Change in cases May 20, 2021	Cumulative case count from August 30, 2020 to May 20, 2021
Ages: 4 to 8	105	83	14,980
Ages: 9 to 13	119	88	19,003
Ages: 14 to 17	109	95	19,261

Note: Includes all confirmed cases of COVID-19 for specified ages, regardless of school attendance. Data corrections or updates can result in case records being removed and or updated from past reports and may result in subset totals (i.e., age group) differing from past publicly reported case counts.

Data Source: CCM

Table 3. Summary of recent confirmed cases of COVID-19 in long-term care homes: Ontario

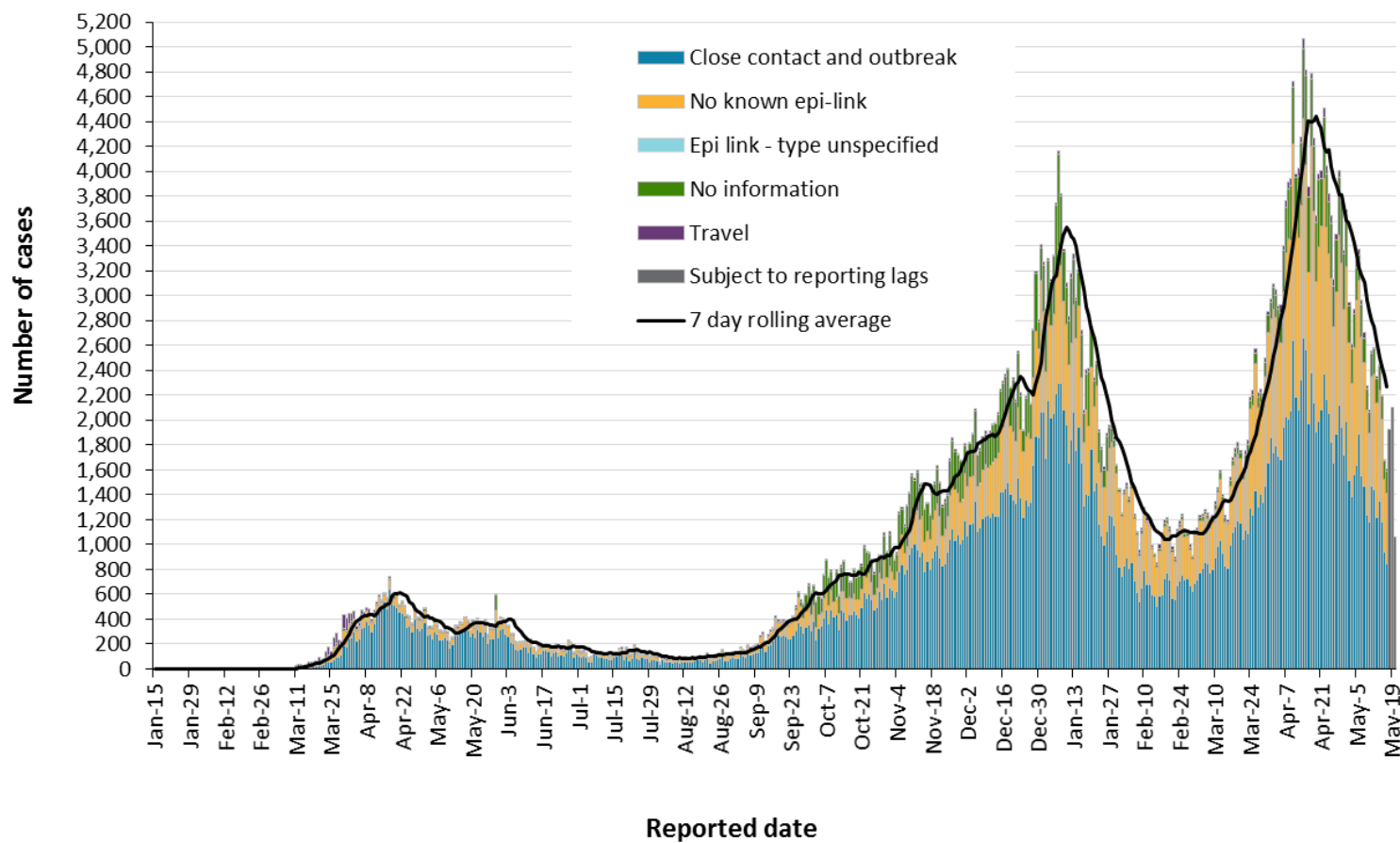
Long-term care home cases	Change in cases May 19, 2021	Change in cases May 20, 2021	Cumulative case count as of May 20, 2021
Residents	3	14	15,255
Health care workers	5	13	7,067
Deaths among residents	1	1	3,945
Deaths among health care workers	0	0	10

Note: Information on how long-term care home residents and health care workers are identified is available in the [technical notes](#). Also, the change in cases in these categories may represent existing case records that have been updated.

Data Source: CCM

Time

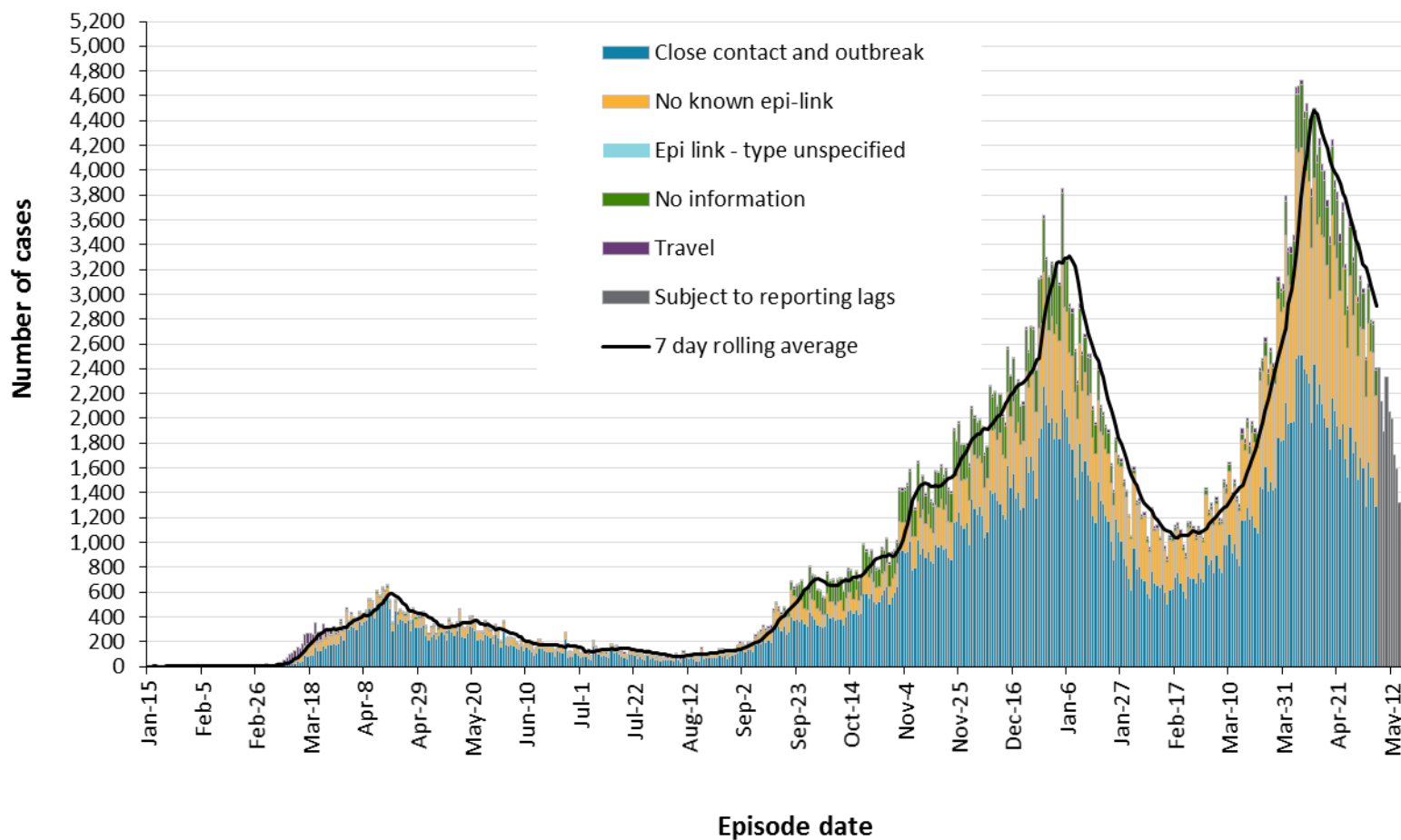
Figure 1. Confirmed cases of COVID-19 by likely acquisition and public health unit reported date: Ontario, January 15, 2020 to May 20, 2021



Data Source: CCM

COVID-19 in Ontario: January 15, 2020 to May 20, 2021

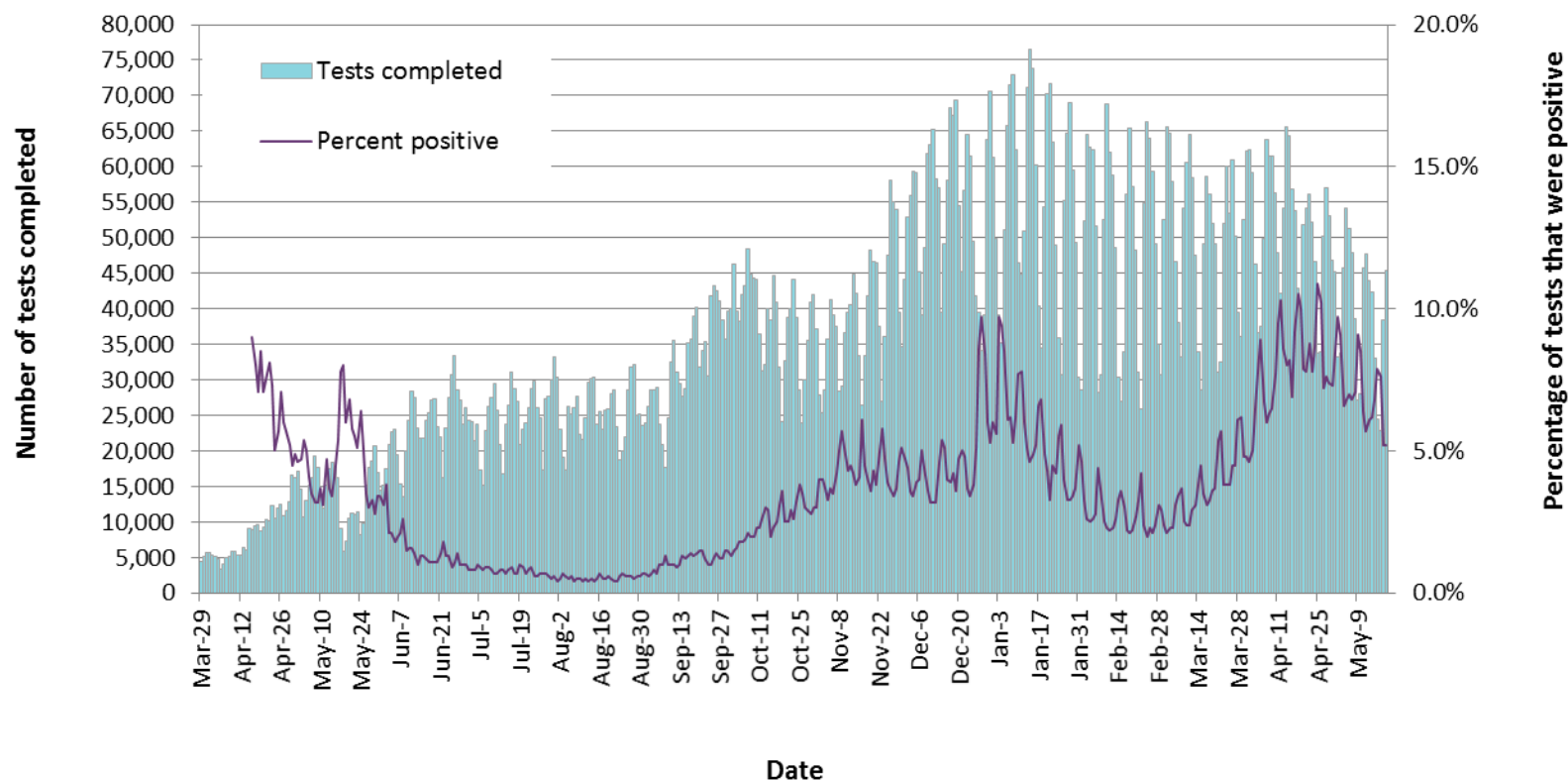
Figure 2. Confirmed cases of COVID-19 by likely acquisition and approximation of symptom onset date: Ontario, January 15, 2020 to May 20, 2021



Note: Not all cases may have an episode date and those without one are not included in the figure. Episode date is defined and available in the [technical notes](#).

Data Source: CCM

Figure 3. Number of COVID-19 tests completed and percent positivity: Ontario, March 29, 2020 to May 19, 2021

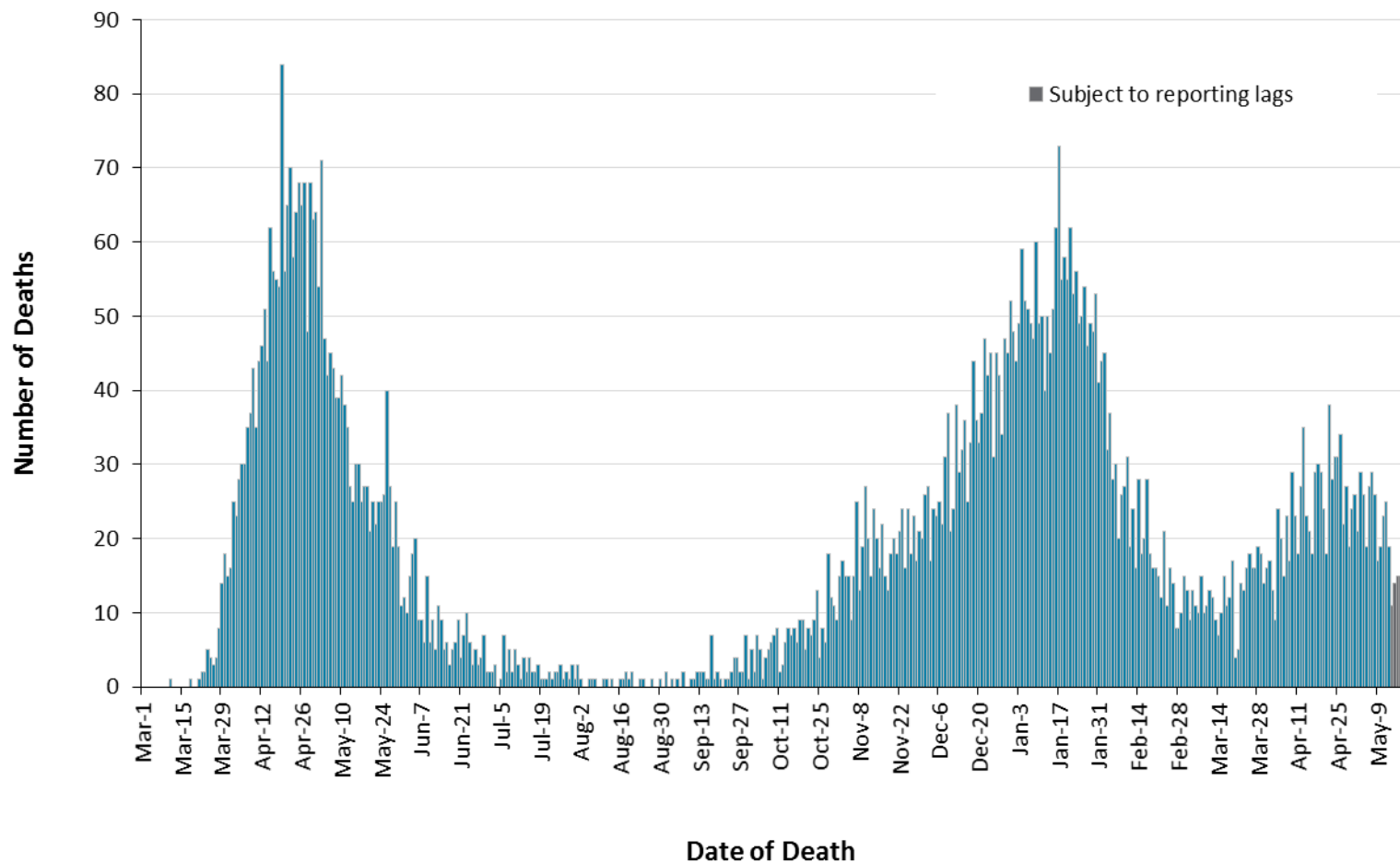


Note: The number of tests performed does not reflect the number of specimens or persons tested. More than one test may be performed per specimen or per person. As such, the percentage of tests that were positive does not necessarily translate to the number of specimens or persons testing positive.

Data Source: The Provincial COVID-19 Diagnostics Network, data reported by member microbiology laboratories.

Severity

Figure 4. Confirmed deaths among COVID-19 cases by date of death: Ontario, March 1, 2020 to May 20, 2021



Note: Cases without a death date are not included in the figure.

Data Source: CCM

Table 4. Confirmed cases of COVID-19 by severity: Ontario

	Cumulative case count as of May 20, 2021	Percentage of all cases
Cumulative deaths reported (please note there may be a reporting delay for deaths)	8,579	1.7%
Deaths reported in ages: 19 and under	4	< 0.1%
Deaths reported in ages: 20-39	67	< 0.1%
Deaths reported in ages: 40-59	472	0.3%
Deaths reported in ages: 60-79	2,624	3.8%
Deaths reported in ages: 80 and over	5,411	22.1%
Ever in ICU	4,692	0.9%
Ever hospitalized	25,453	4.9%

Note: Not all cases have an age reported. Data corrections or updates can result in case records being removed and/or updated and may result in totals differing from past publicly reported case counts.

Data Source: CCM

Geography

Table 5. Summary of recent confirmed cases of COVID-19 by public health unit and region: Ontario

Public Health Unit Name	Change in cases May 19, 2021	Change in cases May 20, 2021	Cumulative case count	Cumulative rate per 100,000 population
Northwestern Health Unit	4	6	1,049	1,196.5
Thunder Bay District Health Unit	7	1	3,175	2,117.2
TOTAL NORTH WEST	11	7	4,224	1,777.5
Algoma Public Health	8	5	383	334.7
North Bay Parry Sound District Health Unit	0	6	430	331.4
Porcupine Health Unit	35	58	983	1,178.1
Public Health Sudbury & Districts	5	1	2,043	1,026.5
Timiskaming Health Unit	3	0	202	617.9
TOTAL NORTH EAST	51	70	4,041	722.5
Ottawa Public Health	92	62	26,399	2,503.1
Eastern Ontario Health Unit	18	7	4,550	2,180.0
Hastings Prince Edward Public Health	7	5	1,086	644.5
Kingston, Frontenac and Lennox & Addington Public Health	5	7	1,506	708.0
Leeds, Grenville & Lanark District Health Unit	4	1	1,702	982.8
Renfrew County and District Health Unit	1	4	686	631.5
TOTAL EASTERN	127	86	35,929	1,865.1

Public Health Unit Name	Change in cases May 19, 2021	Change in cases May 20, 2021	Cumulative case count	Cumulative rate per 100,000 population
Durham Region Health Department	110	107	23,787	3,339.0
Haliburton, Kawartha, Pine Ridge District Health Unit	11	22	1,870	989.7
Peel Public Health	528	468	104,749	6,522.5
Peterborough Public Health	19	5	1,427	964.3
Simcoe Muskoka District Health Unit	70	43	11,707	1,952.5
York Region Public Health	181	165	50,942	4,155.8
TOTAL CENTRAL EAST	919	810	194,482	4,340.5
Toronto Public Health	607	469	158,904	5,092.5
TOTAL TORONTO	607	469	158,904	5,092.5
Chatham-Kent Public Health	1	1	1,845	1,735.4
Grey Bruce Health Unit	14	6	1,281	754.0
Huron Perth Public Health	6	11	1,783	1,275.8
Lambton Public Health	15	10	3,436	2,623.6
Middlesex-London Health Unit	89	71	11,878	2,340.4
Southwestern Public Health	11	15	3,712	1,755.1
Windsor-Essex County Health Unit	55	31	16,283	3,832.8
TOTAL SOUTH WEST	191	145	40,218	2,378.7
Brant County Health Unit	17	10	3,579	2,306.0
City of Hamilton Public Health Services	224	111	19,871	3,355.7

Public Health Unit Name	Change in cases May 19, 2021	Change in cases May 20, 2021	Cumulative case count	Cumulative rate per 100,000 population
Haldimand-Norfolk Health Unit	9	4	2,547	2,232.6
Halton Region Public Health	69	70	16,534	2,670.7
Niagara Region Public Health	68	34	15,411	3,261.7
Region of Waterloo Public Health and Emergency Services	78	48	15,488	2,650.4
Wellington-Dufferin-Guelph Public Health	29	26	7,752	2,485.3
TOTAL CENTRAL WEST	494	303	81,182	2,849.2
TOTAL ONTARIO	2,400	1,890	518,980	3,491.4

Notes: Health units with data corrections or updates could result in records being removed from totals resulting in negative counts.

Data Source: CCM

Outbreaks

Table 6. Summary of recent confirmed COVID-19 outbreaks reported in long-term care homes, retirement homes and hospitals by status: Ontario

Institution type	Change in outbreaks May 19, 2021	Change in outbreaks May 20, 2021	Number of ongoing outbreaks	Cumulative number of outbreaks reported
Long-term care homes	1	2	28	1,465
Retirement homes	0	0	15	862
Hospitals	0	1	30	557

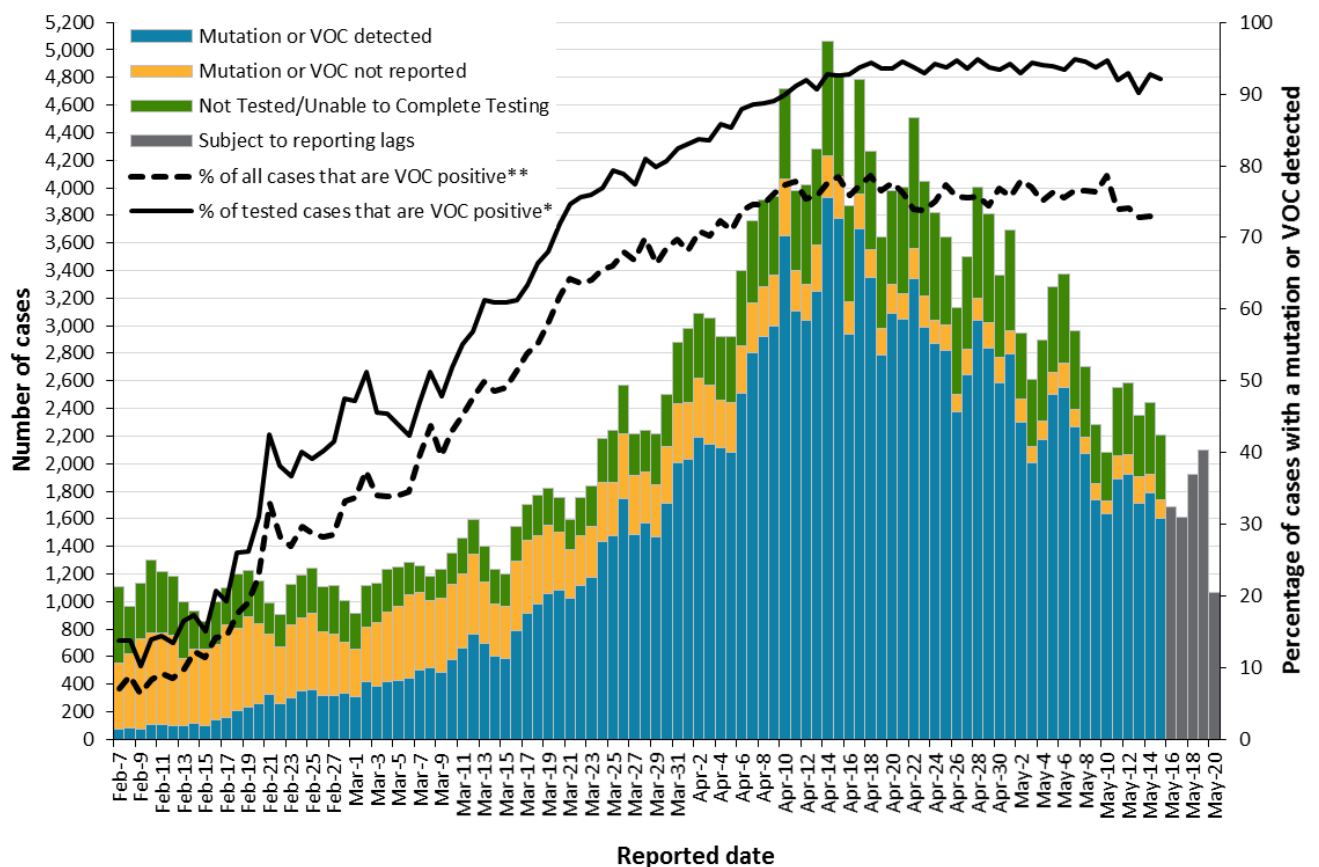
Note: Ongoing outbreaks include all outbreaks that are 'Open' in CCM without a 'Declared Over Date' recorded, or where the outbreak started more than five months ago, even for outbreaks where the Outbreak Status value selected in CCM is 'OPEN'. The start of the outbreak is determined by the onset date of first case, or if missing the outbreak reported date, or else if that is also missing, then the outbreak created date.

Data Source: CCM

Variant COVID-19 Cases

The laboratory detection of a variant of concern (VOC) is a multi-step process. Samples that test positive for SARS-CoV-2 and have a cycle threshold (Ct) value ≤ 35 can be tested for mutations common to variants of concern. If positive for the mutation of interest these samples may then undergo genomic analyses to identify the VOC. VOC lineages may still be confirmed using genomic analysis despite specific S gene mutation(s) being documented as 'unable to complete' due to poor sequence quality at the genome position.

Figure 5. Number of confirmed COVID-19 cases and percent positive for mutations or VOCs: Ontario, February 7, 2021 to May 20, 2021



Note: Data used to calculate the number of cases tested for mutations common to VOCs or lineages using genomic analyses are obtained using information from the Laboratory object in CCM in addition to the data from the Investigation Subtype field. Therefore, comparisons to counts using only information from the Investigation Subtype field may not align. The percent of cases due to a VOC may be higher than described in this report.

*The denominator includes only confirmed COVID-19 cases that were able to be tested for VOCs (e.g. those identified as 'Detected' or 'Not Detected').

**The denominator includes all confirmed COVID-19 cases, including those that were unable to be tested for VOCs (e.g. those identified as 'Detected', 'Not Detected' and 'Not Tested/Unable to Complete Testing').

Data Source: CCM

Table 7. Summary of confirmed COVID-19 cases with a mutation or VOC detected: Ontario

	Change in cases May 19, 2021	Change in cases May 20, 2021	Cumulative case count up to May 20, 2021
Variant of Concern			
Lineage B.1.1.7*	1,810	1,230	115,799
Lineage B.1.351	1	7	691
Lineage P.1	30	53	2,142
Mutations			
N501Y and E484K	49	189	6,730
N501Y (E484K unknown)**	-12	-189	21,758
E484K (N501Y negative)	64	36	4,526
E484K (N501Y unknown)	30	65	626

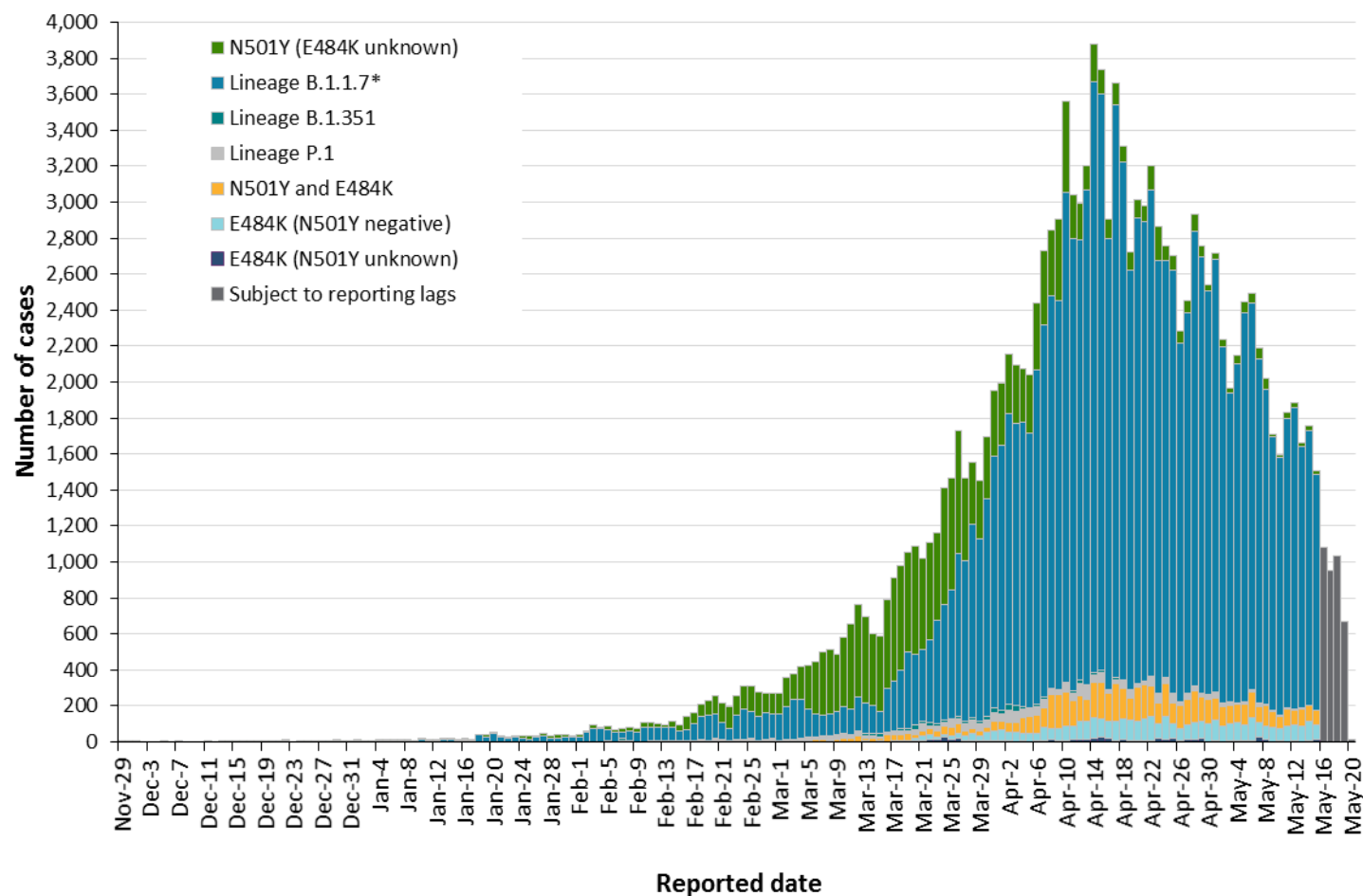
Note: Interpret the VOC and mutation trends with caution due to the varying time required to complete VOC testing and/or genomic analysis following the initial positive test for SARS-CoV-2. Due to the nature of the genomic analysis, test results may be completed in batches. Data corrections or updates can result in case records being removed and/or updated and may result in totals differing from past publicly reported case counts. Data for calculating the change in cases and the cumulative case counts uses data from the Investigation Subtype field only. Changes to the VOC testing algorithm may impact counts and trends. Further details can be found in the [data caveats](#) section.

*Includes all confirmed COVID-19 cases where lineage B.1.1.7 was identified by genomic analysis and those presumed to be B.1.1.7 based on positive N501Y and negative E484K mutation in the Investigation Subtype field

**The category 'N501Y (E484K unknown)' mainly consists of results from before the introduction of the E484K test. Counts will shift from this category into a VOC lineage category as E484K tests or genomic analysis are completed.

Data Source: CCM

Figure 6. Confirmed COVID-19 cases with a mutation or VOC detected by public health unit reported date: Ontario, November 29, 2020 to May 20, 2021



Note: Reported date is based on the date the case was reported, not the date that the VOC or mutation was identified. Further details on testing for variants of concern can be found in the [technical notes](#). Interpret the VOC and mutation trends with caution due to the varying time required to complete testing and/or genomic analysis following the initial positive test for SARS-CoV-2. Data for calculating the change in cases and the cumulative case count uses data from the Investigation

Subtype field only. Data for cases with a B.1.1.7, B.1.351, and P.1 lineage detected or any of the mutations listed above are determined using the Investigation Subtype field only. Changes to the VOC testing algorithm may impact counts and trends. Further details can be found in the [data caveats](#) section.

*Includes all confirmed COVID-19 cases where lineage B.1.1.7 was identified by genomic analysis and those presumed to be B.1.1.7 based on positive N501Y and negative E484K mutation. Starting March 22, 2021, specimens tested for the both the N501Y and E484K mutation, and if found to be positive for the N501Y mutation only, are not forwarded for further genomic analysis and presumed to be B.1.1.7.

Data Source: CCM

Technical Notes

Data Sources

- The data for this report were based on information successfully extracted from the Public Health Case and Contact Management Solution (CCM) for all PHUs by PHO as of **May 20, 2021 at 1 p.m.** for cases reported in 2021 and as of **May 17, 2021 at 9 a.m.** for cases reported in 2020.
- CCM is a dynamic disease reporting system, which allows ongoing updates to data previously entered. As a result, data extracted from CCM represent a snapshot at the time of extraction and may differ from previous or subsequent reports.
- Ontario population projection data for 2020 were sourced from Ministry, IntelliHEALTH Ontario. Data were extracted on November 26, 2019.
- COVID-19 test data were based on information from The Provincial COVID-19 Diagnostics Network, reported by member microbiology laboratories.

Data Caveats

- The data only represent cases reported to public health units and recorded in CCM. As a result, all counts will be subject to varying degrees of underreporting due to a variety of factors, such as disease awareness and medical care seeking behaviours, which may depend on severity of illness, clinical practice, changes in laboratory testing, and reporting behaviours.
- Lags in CCM data entry due to weekend staffing may result in lower case counts than would otherwise be recorded.
- Only cases meeting the confirmed case classification as listed in the [MOH Case Definition – Coronavirus Disease \(COVID-19\) document](#) are included in the report counts from CCM
- Cases of confirmed reinfection, as defined in the provincial case definitions, are counted as unique investigations.
- Case classification information may be updated for individuals with a positive result issued from a point-of-care assays.
- The number of tests performed does not reflect the number of specimens or persons tested. More than one test may be performed per specimen or per person. As such, the percentage of tests that were positive does not necessarily translate to the number of specimens or persons testing positive.
- Reported date is the date the case was reported to the public health unit.
- Case episode date is based on an estimate of the best date of disease onset. This date is calculated based on either the date of symptom onset, specimen collection/test date, or the date reported to the public health unit.
- Resolved cases are determined only for COVID-19 cases that have not died. Cases that have died are considered fatal and not resolved. The following cases are classified as resolved:

- Cases that are reported as 'recovered' in CCM
- Cases that are not hospitalized and are 14 days past their episode date
- Cases that are currently hospitalized (no hospital end date entered) and have a status of 'closed' in CCM (indicating public health unit follow-up is complete) and are 14 days past their symptom onset date or specimen collection date
- Hospitalization includes all cases for which a hospital admission date was reported at the time of data extraction. It includes cases that have been discharged from hospital as well as cases that are currently hospitalized. Emergency room visits are not included in the number of reported hospitalizations.
- ICU admission includes all cases for which an ICU admission date was reported at the time of data extraction. It is a subset of the count of hospitalized cases. It includes cases that have been treated or that are currently being treated in an ICU.
- Orientation of case counts by geography is based on the diagnosing health unit (DHU). DHU refers to the case's public health unit of residence at the time of illness onset and not necessarily the location of exposure. Cases for which the DHU was reported as MOH-PHO (to signify a case that is not a resident of Ontario) have been excluded from the analyses.
- Likely source of acquisition is determined by examining the epidemiologic link and epidemiologic link status fields in CCM. If no epidemiologic link is identified in those fields the risk factor fields are examined to determine whether a case travelled, was associated with a confirmed outbreak, was a contact of a case, had no known epidemiological link (sporadic community transmission) or was reported to have an unknown source/no information was reported. Some cases may have no information reported if the case is untraceable, was lost to follow-up or referred to FNIHB. Cases with multiple risk factors were assigned to a single likely acquisition source group which was determined hierarchically in the following order:
 - For cases with an episode date *on or after* April 1, 2020: Outbreak-associated > close contact of a confirmed case > travel > no known epidemiological link > information missing or unknown
 - For cases with an episode date *before* April 1, 2020: Travel > outbreak-associated > close contact of a confirmed case > no known epidemiological link > information missing or unknown
- Deaths are determined by using the outcome field in CCM. Any case marked 'Fatal' is included in the deaths data. The CCM field Type of Death is not used to further categorize the data.
 - The date of death is determined using the outcome date field for cases marked as 'Fatal' in the outcome field.
- COVID-19 cases from CCM for which the Classification and/or Disposition was reported as ENTERED IN ERROR, DOES NOT MEET DEFINITION, IGNORE, DUPLICATE or any variation on these values have been excluded. The provincial case count for COVID-19 may include some duplicate records, if these records were not identified and resolved.
- Ongoing outbreaks include all outbreaks that are 'Open' in CCM without a 'Declared Over Date' recorded, or where the outbreak started more than five months ago, even for outbreaks where

the Outbreak Status value selected in CCM is 'OPEN'. The start of the outbreak is determined by the onset date of first case, or if missing the outbreak reported date, or else if that is also missing, then the outbreak created date.

- 'Long-term care home residents' includes cases that reported 'Yes' to the risk factor 'Resident of a long-term care home'; or 'Yes' to the risk factor 'Resident of nursing home or other chronic care facility' and reported to be part of an outbreak assigned as a long-term care home (via the Outbreak number or case comments field); or were reported to be part of an outbreak assigned as a long-term care home (via the outbreak number or case comments field) with an age over 70 years and did not report 'No' to the risk factors 'Resident of long-term care home' or 'Resident of nursing home or other chronic care facility'. 'Long-term care home residents' excludes cases that reported 'Yes' to any of the health care worker occupational risk factors.
- The 'health care workers' variable includes cases that reported 'Yes' to any of the occupation of health care worker, doctor, nurse, dentist, dental hygienist, midwife, other medical technicians, personal support worker, respiratory therapist, first responder.
- 'Health care workers associated with long-term care outbreaks' includes 'health care workers' reported to be part of an outbreak assigned as a long-term care home (via the outbreak number or case comments field). Excludes cases that reported 'Yes' to risk factors 'Resident of long-term care home' or 'Resident of nursing home or other chronic care facility' and 'Yes' to the calculated 'health care workers' variable.
- Percent change is calculated by taking the difference between the current period (i.e., daily count or sum of the daily count over a 7-day period) and previous period (i.e., daily count or sum of the daily count over a 7-day period), divided by the previous period.
- PANGO lineage B.1.1.7: This lineage was first detected in England in September, 2020. Early evidence suggests that the N501Y mutation may increase SARS-CoV-2 transmissibility. The PANGO lineage B.1.1.7 is assigned to genome sequences with at least 5 of the 17 defining B.1.1.7 SNPs.
- PANGO lineage B.1.351 (also known as 501Y.V2): This lineage was first detected October, 2020 in South Africa and has several mutations of concern, including spike (S) gene: N501Y, K417N, and E484K. Early evidence suggests that these mutations may increase SARS-CoV-2 transmissibility and decrease vaccine efficacy. The PANGO lineage B.1.351 will be assigned to genome sequences at least 5 of the 9 defining B.1.351 SNPs.
- PANGO lineage P.1 (also known as 501Y.V3): This lineage was first detected January, 2021 in Brazil and has several mutations of concern, including spike (S) gene N501Y, K417T, and E484K. Early evidence suggests that these mutations may increase SARS-CoV-2 transmissibility and decrease vaccine efficacy. The PANGO lineage P.1 is assigned to genome sequences with more than 10 of the 17 defining P.1 SNPs.
- Public Health Ontario conducts testing and genomic analyses for SARS-CoV-2 positive specimens using the criteria outlined here: <https://www.publichealthontario.ca/en/laboratory-services/test-information-index/covid-19-voc>
- Changes to the VOC testing algorithm may occur over time and trends should be interpreted with caution. Since February 3, 2021 all PCR positive SARS-CoV-2 specimens with CT values ≤ 35 are tested for a N501Y mutation. Starting March 22, 2021, these specimens are tested for the E484K mutation as well. Specimens that are positive for the N501Y mutation only are not being

forwarded for further genomic analysis. Specimens that are E484K positive (with or without N501Y) are forwarded for genomic analysis.

- The laboratory detection of a variant of concern is a multi-step process. Samples that test positive for SARS-CoV-2 and have a cycle threshold (Ct) value ≤ 35 can be tested for mutations common to variants of concern. If positive for the mutation of interest these samples may then undergo genomic analyses to identify the VOC. VOC lineages may still be confirmed using genomic analysis despite specific S gene mutation(s) being documented as 'unable to complete' due to poor sequence quality at the genome position.
- VOC testing data are analyzed for cases with a reported date on or after February 07, 2021. VOC testing data are based on CCM information reported within the laboratory object for select Logical Observation Identifiers Names and Codes (LOINC) and supplemented with information from the Investigation Subtype field. A confirmed Case Investigation is assigned a VOC test value (e.g., VOC test detected, VOC test not detected) based on the following hierarchy:
 - If multiple laboratory results are identified, a VOC test value is assigned based on the following hierarchy: Detected > Not Detected > Unable to complete
 - If a laboratory result is 'Not Detected' or 'Unable to complete', but data on the Investigation Subtype field is listed as a lineage or mutation common to a VOC, then the VOC test value is set to 'Detected'
- If a VOC is identified through genomic analysis cases initially classified as a mutation may be updated and moved to the appropriate lineage (B.1.1.7, B.1.351 and P.1)
- LOINC codes are a set of internationally used result description codes. In the absence of a standard LOINC, Ontario Health can create local result codes, which are identified with an 'XON' prefix. LOINC codes incorporate details of the result value (e.g. test method, target detected - such as IgG, DNA, isolate etc.) and are unique to each result.
- VOC testing data in this report are assigned on a per case basis. Multiple laboratory results may be associated to a single case investigation, but for analysis purposes are only counted once.
 - The percent of cases that test VOC positive is calculated by taking the number of VOC test positive, divided by the total number of confirmed COVID-19 cases for a given reported date.
- The VOC percent positive may be higher than described in this report. While all confirmed COVID-19 cases are included in the denominator, not all cases were able to be tested for VOCs. As testing algorithms change, the VOC percent positivity may not be reflective of the exact number of COVID-19 cases due to VOCs
- Only CCM case investigations with a CONFIRMED classification have their laboratory records with VOC testing information included in the percent positivity calculations

Appendix A

Table A1. Weekly rates of confirmed COVID-19 cases per 100,000 population over recent rolling 7-day periods, by reported date and public health unit: Ontario, May 5 to May 17, 2021

Public Health Unit Name	May 5 to May 11	May 6 to May 12	May 7 to May 13	May 8 to May 14	May 9 to May 15	May 10 to May 16	May 11 to May 17	% change from May 5 - May 11 to May 11 - May 17
NORTH WEST								
Northwestern Health Unit	49.0	44.5	36.5	30.8	30.8	33.1	30.8	-37.1%
Thunder Bay District Health Unit	17.3	19.3	18.0	18.7	15.3	14.7	15.3	-11.6%
NORTH EAST								
Algoma Public Health	14.9	14.9	17.5	14.9	15.7	15.7	14.9	0.0%
North Bay Parry Sound District Health Unit	23.1	21.6	19.3	17.7	16.2	20.8	21.6	-6.5%
Porcupine Health Unit	136.6	146.2	147.4	175.0	183.4	185.8	173.8	+27.2%
Public Health Sudbury & Districts	21.1	21.1	22.6	21.6	24.6	19.6	17.1	-19.0%
Timiskaming Health Unit	21.4	15.3	15.3	3.1	3.1	3.1	9.2	-57.0%
EASTERN								
Ottawa Public Health	71.7	71.9	67.8	69.6	64.8	62.7	63.1	-12.0%
Eastern Ontario Health Unit	44.6	42.6	41.7	45.0	42.6	45.0	44.1	-1.1%
Hastings Prince Edward Public Health	41.5	35.0	30.9	24.9	23.7	25.5	24.9	-40.0%
Kingston, Frontenac and Lennox & Addington Public Health	40.9	35.3	35.7	32.4	30.6	28.2	26.8	-34.5%

Public Health Unit Name	May 5 to May 11	May 6 to May 12	May 7 to May 13	May 8 to May 14	May 9 to May 15	May 10 to May 16	May 11 to May 17	% change from May 5 - May 11 to May 11 - May 17
Leeds, Grenville & Lanark District Health Unit	12.7	11.0	9.2	11.0	11.0	11.0	11.0	-13.4%
Renfrew County and District Health Unit	41.4	38.7	36.8	40.5	42.3	24.9	27.6	-33.3%
CENTRAL EAST								
Durham Region Health Department	157.4	159.6	148.1	152.7	141.9	136.2	126.5	-19.6%
Haliburton, Kawartha, Pine Ridge District Health Unit	48.2	46.6	41.3	41.3	32.8	34.9	37.0	-23.2%
Peel Public Health	281.5	276.1	246.2	234.4	231.1	220.1	218.9	-22.2%
Peterborough Public Health	41.2	45.3	50.0	52.0	62.8	61.5	64.2	+55.8%
Simcoe Muskoka District Health Unit	67.9	61.7	59.9	56.7	58.0	58.0	58.7	-13.5%
York Region Public Health	152.3	142.8	138.7	133.7	127.9	118.5	111.1	-27.1%
TORONTO								
Toronto Public Health	175.7	166.2	160.7	154.4	150.1	143.5	138.9	-20.9%
SOUTH WEST								
Chatham-Kent Public Health	23.5	27.3	25.4	23.5	24.5	26.3	28.2	+20.0%
Grey Bruce Health Unit	24.1	24.7	23.5	26.5	26.5	24.7	25.9	+7.5%
Huron Perth Public Health	63.7	64.4	68.0	68.0	56.5	56.5	56.5	-11.3%
Lambton Public Health	57.3	51.9	59.6	58.0	56.5	58.0	58.0	+1.2%
Middlesex-London Health Unit	107.6	101.7	95.6	88.3	82.8	79.8	75.1	-30.2%

Public Health Unit Name	May 5 to May 11	May 6 to May 12	May 7 to May 13	May 8 to May 14	May 9 to May 15	May 10 to May 16	May 11 to May 17	% change from May 5 - May 11 to May 11 - May 17
Southwestern Public Health	55.3	58.6	53.9	47.8	46.3	48.7	44.9	-18.8%
Windsor-Essex County Health Unit	64.5	67.1	70.6	69.7	68.0	67.3	66.9	+3.7%
CENTRAL WEST								
Brant County Health Unit	99.9	94.7	89.6	93.4	92.1	103.1	87.6	-12.3%
City of Hamilton Public Health Services	146.4	139.5	130.2	131.2	132.9	138.3	130.4	-10.9%
Haldimand-Norfolk Health Unit	90.3	85.9	78.9	73.6	77.1	78.0	65.7	-27.2%
Halton Region Public Health	116.0	110.8	101.0	99.2	94.2	90.8	86.3	-25.6%
Niagara Region Public Health	129.7	122.8	114.1	107.5	102.9	96.3	94.2	-27.4%
Region of Waterloo Public Health and Emergency Services	75.1	76.0	82.5	79.9	78.5	79.1	80.9	+7.7%
Wellington-Dufferin-Guelph Public Health	87.8	82.4	77.3	74.1	68.3	66.4	63.5	-27.7%
TOTAL ONTARIO	129.4	124.8	117.9	114.4	111.0	107.0	103.8	-19.8%

Note: Rates are based on the sum of the daily case counts during the date ranges specified in each column.

Data Source: CCM

Table A2. Summary of confirmed COVID-19 cases with a mutation or VOC by public health unit: Ontario as of May 20, 2021

Public Health Unit Name	Cumulative count for Lineage B.1.1.7*	Cumulative count for Lineage B.1.351	Cumulative count for Lineage P.1	Cumulative count for mutations**
Algoma Public Health	54	0	0	37
Brant County Health Unit	529	0	53	463
Chatham-Kent Public Health	99	5	3	112
City of Hamilton Public Health Services	4,801	11	26	1,364
Durham Region Health Department	8,562	22	99	1,191
Eastern Ontario Health Unit	596	24	3	305
Grey Bruce Health Unit	283	0	3	51
Haldimand-Norfolk Health Unit	304	0	7	382
Haliburton, Kawartha, Pine Ridge District Health Unit	321	0	7	225
Halton Region Public Health	4,616	17	73	624
Hastings Prince Edward Public Health	40	0	1	409
Huron Perth Public Health	143	0	0	90
Kingston, Frontenac and Lennox & Addington Public Health	402	1	22	144
Lambton Public Health	381	0	4	98
Leeds, Grenville & Lanark District Health Unit	272	9	0	39
Middlesex-London Health Unit	2,664	0	27	359
Niagara Region Public Health	3,376	0	3	988

Public Health Unit Name	Cumulative count for Lineage B.1.1.7*	Cumulative count for Lineage B.1.351	Cumulative count for Lineage P.1	Cumulative count for mutations**
North Bay Parry Sound District Health Unit	108	27	0	16
Northwestern Health Unit	36	0	1	26
Ottawa Public Health	5,108	178	14	717
Peel Public Health	25,069	76	568	5,242
Peterborough Public Health	438	2	1	169
Porcupine Health Unit	399	2	0	4
Public Health Sudbury & Districts	530	3	0	361
Region of Waterloo Public Health and Emergency Services	2,530	3	18	310
Renfrew County and District Health Unit	180	2	1	23
Simcoe Muskoka District Health Unit	3,130	19	101	872
Southwestern Public Health	604	2	2	99
Thunder Bay District Health Unit	36	0	0	43
Timiskaming Health Unit	78	1	0	0
Toronto Public Health	33,230	257	869	15,758
Wellington-Dufferin-Guelph Public Health	1,848	0	23	203
Windsor-Essex County Health Unit	1,400	4	5	113
York Region Public Health	13,632	26	208	2,803
TOTAL ONTARIO	115,799	691	2,142	33,640

Note: Interpret the VOC and mutation trends with caution due to the varying time required to complete VOC testing and/or genomic analysis following the initial positive test for SARS-CoV-2. Due to the nature of the genomic analysis, test results may be completed in batches. Data corrections or updates can result in case records being removed and/or updated and may result in totals differing from past publicly reported case counts. Data for calculating the change in cases and the cumulative case count uses data from the Investigation Subtype field only. Changes to the VOC testing algorithm may impact counts and trends. Further details can be found in the [data caveats](#) section.

*Includes all confirmed COVID-19 cases where lineage B.1.1.7 was identified by genomic analysis and those presumed to be B.1.1.7 based on positive N501Y and negative E484K mutation.

**Mutations includes all confirmed COVID-19 cases with the following mutations detected, reported from the Investigation Subtype field: N501Y and E484K, N501Y (E484K unknown), E484K (N501Y negative), E484K (N501Y unknown).

If a VOC is identified through genomic analysis, the change in cases and/or cumulative case counts for mutations will fluctuate as the case is moved to one of the listed lineages.

Data Source: CCM

Table A3. Weekly percent positivity for cases positive for mutations or VOCs over recent rolling 7-day periods using all confirmed cases as the denominator, by reported date and public health unit: Ontario, May 3 to May 15, 2021

Public Health Unit Name	May 3 to May 9	May 4 to May 10	May 5 to May 11	May 6 to May 12	May 7 to May 13	May 8 to May 14	May 9 to May 15
Algoma Public Health	70.0	76.9	58.8	58.8	65.0	64.7	61.1
Brant County Health Unit	76.2	77.7	85.2	84.4	85.6	84.8	80.4
Chatham-Kent Public Health	64.0	69.6	64.0	69.0	70.4	68.0	73.1
City of Hamilton Public Health Services	76.6	78.4	77.9	75.4	76.1	75.2	73.7
Durham Region Health Department	88.2	88.3	88.3	88.0	87.8	88.5	87.4
Eastern Ontario Health Unit	38.9	38.6	40.9	40.4	37.9	40.4	39.3
Grey Bruce Health Unit	62.9	65.7	61.0	64.3	72.5	73.3	75.6
Haldimand-Norfolk Health Unit	74.3	71.7	70.9	65.3	62.2	58.3	56.8
Haliburton, Kawartha, Pine Ridge District Health Unit	78.8	80.0	79.1	78.4	79.5	79.5	82.3
Halton Region Public Health	79.5	79.9	79.7	80.0	80.2	81.1	80.4
Hastings Prince Edward Public Health	86.1	87.5	90.0	88.1	88.5	88.1	85.0
Huron Perth Public Health	79.2	79.5	73.0	75.6	71.6	71.6	65.8
Kingston, Frontenac and Lennox & Addington Public Health	88.7	88.9	88.5	89.3	89.5	92.8	95.4
Lambton Public Health	77.1	77.6	78.7	76.5	78.2	76.3	78.4

Public Health Unit Name	May 3 to May 9	May 4 to May 10	May 5 to May 11	May 6 to May 12	May 7 to May 13	May 8 to May 14	May 9 to May 15
Leeds, Grenville & Lanark District Health Unit	51.3	51.4	54.5	63.2	68.8	68.4	68.4
Middlesex-London Health Unit	83.5	82.6	81.7	81.8	79.0	78.1	79.3
Niagara Region Public Health	75.1	71.5	67.5	60.2	52.1	44.5	32.9
North Bay Parry Sound District Health Unit	71.9	72.4	73.3	71.4	60.0	60.9	61.9
Northwestern Health Unit	2.1	6.1	4.7	5.1	6.3	7.4	7.4
Ottawa Public Health	34.0	35.2	38.1	36.4	37.5	39.6	39.2
Peel Public Health	71.5	71.3	70.6	71.1	70.8	70.3	69.8
Peterborough Public Health	86.0	87.7	83.6	88.1	89.2	88.3	89.2
Porcupine Health Unit	76.7	79.0	76.3	77.0	72.4	71.2	71.2
Public Health Sudbury & Districts	78.8	77.4	73.8	69.0	68.9	62.8	63.3
Region of Waterloo Public Health and Emergency Services	72.8	73.0	73.3	72.7	73.0	73.9	74.1
Renfrew County and District Health Unit	83.0	83.0	82.2	76.2	72.5	72.7	76.1
Simcoe Muskoka District Health Unit	77.1	76.8	78.4	77.6	77.2	77.1	78.7
Southwestern Public Health	75.2	77.6	76.9	84.7	85.1	84.2	83.7
Thunder Bay District Health Unit	53.6	52.2	61.5	65.5	70.4	71.4	73.9
Timiskaming Health Unit	91.7	87.5	100.0	100.0	100.0	100.0	100.0

Public Health Unit Name	May 3 to May 9	May 4 to May 10	May 5 to May 11	May 6 to May 12	May 7 to May 13	May 8 to May 14	May 9 to May 15
Toronto Public Health	79.6	79.9	80.1	80.5	80.7	80.7	81.2
Wellington-Dufferin-Guelph Public Health	82.8	82.0	80.3	79.0	76.3	74.0	72.3
Windsor-Essex County Health Unit	86.1	85.9	83.2	82.1	75.3	70.3	68.5
York Region Public Health	84.8	85.4	86.1	86.2	86.1	85.1	84.3
TOTAL ONTARIO	76.1	76.3	76.2	75.9	75.5	75.0	74.4

Note: Data for calculating the number of cases tested for mutations common to VOCs or lineages using genomic analyses are obtained using information from the Laboratory object in CCM in addition to the data from the Investigation subtype field. Therefore, comparisons to counts using only information from the Investigation Subtype field may not align. The percent of cases due to a VOC may be higher than described in this report. While all confirmed COVID-19 cases are included in the denominator, not all cases were able to be tested for VOCs. Percent positivity is based on the sum of the daily cases that test positive divided by the number of cases reported during the date ranges specified in each column.

Data Source: CCM.

Table A4. Weekly percent positivity for cases positive for mutations or VOCs over recent rolling 7-day periods using cases tested for mutations or VOCs as the denominator, by reported date and public health unit: Ontario, May 3 to May 15, 2021

Public Health Unit Name	May 3 to May 9	May 4 to May 10	May 5 to May 11	May 6 to May 12	May 7 to May 13	May 8 to May 14	May 9 to May 15
Algoma Public Health	87.5	83.3	83.3	83.3	86.7	84.6	84.6
Brant County Health Unit	90.1	91.7	97.8	97.6	96.7	96.9	92.7
Chatham-Kent Public Health	94.1	94.1	94.1	95.2	95.0	94.4	95.0
City of Hamilton Public Health Services	88.7	90.2	90.2	91.5	92.3	92.0	91.5
Durham Region Health Department	96.8	97.1	96.9	97.1	97.6	97.6	97.6
Eastern Ontario Health Unit	97.4	94.4	95.0	97.3	91.7	92.7	92.1
Grey Bruce Health Unit	84.6	88.5	86.2	87.1	90.6	91.7	91.9
Haldimand-Norfolk Health Unit	95.3	95.3	93.6	92.8	94.9	94.2	92.6
Haliburton, Kawartha, Pine Ridge District Health Unit	96.3	96.2	96.0	94.5	95.4	93.9	96.2
Halton Region Public Health	97.8	97.9	97.9	98.0	98.2	98.2	98.1
Hastings Prince Edward Public Health	100.0	100.0	100.0	100.0	100.0	100.0	100.0
Huron Perth Public Health	95.0	96.7	94.2	94.4	91.9	93.2	91.2
Kingston, Frontenac and Lennox & Addington Public Health	99.0	98.9	98.7	98.5	100.0	100.0	98.4
Lambton Public Health	85.7	85.2	85.5	86.7	88.4	87.9	89.2

Public Health Unit Name	May 3 to May 9	May 4 to May 10	May 5 to May 11	May 6 to May 12	May 7 to May 13	May 8 to May 14	May 9 to May 15
Leeds, Grenville & Lanark District Health Unit	100.0	100.0	100.0	100.0	100.0	100.0	100.0
Middlesex-London Health Unit	96.8	97.2	97.8	97.9	96.2	96.4	95.4
Niagara Region Public Health	99.2	99.1	98.6	98.6	98.3	97.4	97.0
North Bay Parry Sound District Health Unit	95.8	91.3	91.7	90.9	78.9	77.8	72.2
Northwestern Health Unit	5.3	15.0	10.5	9.5	11.8	14.3	14.3
Ottawa Public Health	91.5	91.9	92.3	92.3	89.3	89.5	89.9
Peel Public Health	91.8	91.4	90.9	90.5	89.4	88.9	88.4
Peterborough Public Health	94.2	94.3	94.4	95.2	97.1	95.8	97.6
Porcupine Health Unit	94.3	95.2	95.6	95.9	93.7	92.0	91.6
Public Health Sudbury & Districts	91.1	95.3	93.9	96.7	93.9	90.0	91.2
Region of Waterloo Public Health and Emergency Services	91.5	90.5	88.0	87.1	86.3	86.7	86.7
Renfrew County and District Health Unit	100.0	100.0	100.0	100.0	100.0	100.0	100.0
Simcoe Muskoka District Health Unit	92.4	91.8	92.5	91.4	91.7	91.6	91.9
Southwestern Public Health	94.3	93.8	92.8	95.5	96.0	95.5	94.3
Thunder Bay District Health Unit	78.9	75.0	80.0	79.2	86.4	87.0	94.4
Timiskaming Health Unit	100.0	100.0	100.0	100.0	100.0	100.0	100.0

Public Health Unit Name	May 3 to May 9	May 4 to May 10	May 5 to May 11	May 6 to May 12	May 7 to May 13	May 8 to May 14	May 9 to May 15
Toronto Public Health	94.3	94.6	94.2	94.2	94.1	93.8	93.8
Wellington-Dufferin-Guelph Public Health	96.5	95.1	93.2	92.7	89.8	87.7	86.0
Windsor-Essex County Health Unit	96.0	94.8	92.7	92.1	92.2	90.8	89.2
York Region Public Health	97.2	97.4	97.8	97.7	97.5	96.9	96.2
TOTAL ONTARIO	94.1	94.1	93.9	93.7	93.3	93.0	92.6

Note: Data for calculating the number of cases tested for mutations common to VOCs or lineages using genomic analyses are obtained using information from the Laboratory object in CCM in addition to the data from the Investigation subtype field. Therefore, comparisons to counts using only information from the Investigation Subtype field may not align. The percent of cases due to a VOC may be higher than described in this report. Percent positivity is based on the sum of the daily cases that test positive divided by the number of cases that were tested for mutations common to VOCs or lineages (e.g. those identified as 'Detected' or 'Not Detected') during the date ranges specified in each column.

Data Source: CCM.

Citation

Ontario Agency for Health Protection and Promotion (Public Health Ontario). Epidemiologic summary: COVID-19 in Ontario – January 15, 2020 to May 20, 2021. Toronto, ON: Queen’s Printer for Ontario; 2021.

Disclaimer

This document was developed by Public Health Ontario (PHO). PHO provides scientific and technical advice to Ontario’s government, public health organizations and health care providers. PHO’s work is guided by the current best available evidence at the time of publication. The application and use of this document is the responsibility of the user. PHO assumes no liability resulting from any such application or use. This document may be reproduced without permission for non-commercial purposes only and provided that appropriate credit is given to PHO. No changes and/or modifications may be made to this document without express written permission from PHO.

For Further Information

For more information, cd@oahpp.ca.

Public Health Ontario

Public Health Ontario is an agency of the Government of Ontario dedicated to protecting and promoting the health of all Ontarians and reducing inequities in health. Public Health Ontario links public health practitioners, front-line health workers and researchers to the best scientific intelligence and knowledge from around the world.

For more information about PHO, visit publichealthontario.ca.



©Queen’s Printer for Ontario, 2021