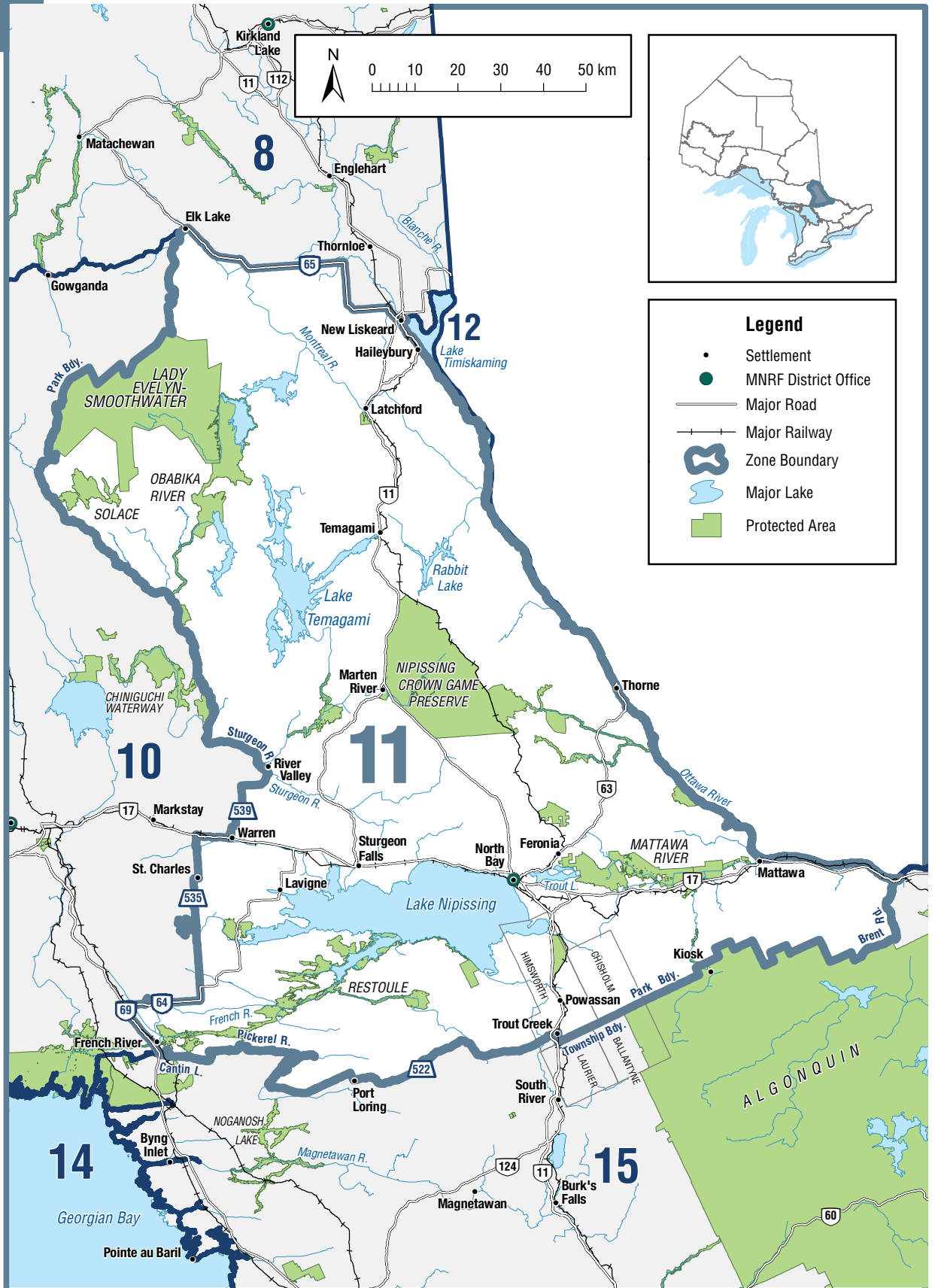


Fisheries Management Zone 11



General Information

- See General Fishing Regulations for more information on how to use this summary, aggregate limits for trout and salmon and open seasons.
- Some Brook Trout Additional Fishing Opportunities in Zone 11 also have bait restrictions. Be sure to review these regulations carefully.
- The following waterbodies have regulations that are very different from the Zone-wide season and limits and are only referred to in the Waterbody Exceptions: Cut Lake, French River Provincial Park, Green Lake, Lake Nipissing, Lake Temagami, McConnell Lake, Obabika Lake, Shanty Lake, Surecatch Lake, and Trout Lake.

Zone-wide Seasons and Limits

Atlantic Salmon

Season: closed all year

Brook Trout

Season: February 15 to September 30
Limits: S-5; not more than 1 greater than 31 cm, and C-2; none greater than 31 cm

Brown Trout

Season: fourth Saturday in April to September 30
Limits: S-5 and C-2

Channel Catfish

Season: open all year
Limits: S-12 and C-6

Crappie

Season: open all year
Limits: S-30 and C-10

Lake Sturgeon

Season: closed all year

Lake Trout

Season: February 15 to third Sunday in March and third Saturday in May to September 30
Limits: S-2 and C-1

Lake Whitefish

Season: open all year
Limits: S-12 and C-6

Largemouth and Smallmouth Bass combined

Season: fourth Saturday in June to December 31

Limits: S-6 and C-2

Muskellunge

Season: third Saturday in June to December 15

Limits: S-1; must be greater than 122 cm, and C-0

Northern Pike

Season: January 1 to third Sunday in March and third Saturday in May to December 31

Limits: S-6; not more than 2 greater than 61 cm, of which not more than 1 is greater than 86 cm and C-2; not more than 1 greater than 61 cm, none greater than 86 cm

Pacific Salmon

Season: open all year
Limits: S-5 and C-2

Rainbow Trout

Season: open all year
Limits: S-5 and C-2

Splake

Season: open all year
Limits: S-5 and C-2

Sunfish

Season: open all year
Limits: S-50 and C-25

Walleye and Sauger combined

Season: January 1 to third Sunday in March and third Saturday in May to December 31

Limits: S-4 and C-2; none between 43-60 cm, not more than 1 greater than 60 cm

Yellow Perch

Season: open all year
Limits: S-50 and C-25

Species Exceptions**Brook Trout****Additional Fishing Opportunities****Season: open all year**

- Barnett Lake (47°09'05"N., 80°02'37"W.) - Aston Township
- Bartle Lake (47°30'00"N., 79°50'00"W.) - Hudson Township
- Bastien Lake (Tower Lake) (46°23'56"N., 78°54'52"W.) - Mattawan Township
- Beach Lake (46°44'11"N., 79°47'48"W.) - Sisk Township
- Best Lake 73 (47°09'30"N., 79°45'41"W.) - Best Township
- Brown's Lake (47°06'57"N., 80°05'18"W.) - Cynthia Township
- Coppersand Lake (47°08'44"N., 80°03'47"W.) - Aston Township
- Dokis Pond (46°07'23"N., 80°02'46"W.) - IR 9
- Fork Lake (46°09'13"N., 78°43'53"W.) - Boyd Township
- Froggy Lake (46°17'12"N., 79°07'22"W.) - Bonfield Township
- Gillies Limit Lake 19 (47°16'04"N., 79°46'59"W.) - Gillies Limit Township
- Gillies Limit Lake 51 (47°16'57"N., 79°42'44"W.) - Gillies Limit Township
- Glassy Lake (46°23'16"N., 79°06'50"W.) - Phelps Township
- Herbert Lake (46°58'48"N., 80°08'17"W.) - Joan Township
- High Lake (46°53'46"N., 80°20'28"W.) - Afton Township
- Hillcrest Lake (47°00'52"N., 80°03'24"W.) - Joan Township
- Hook Lake (47°08'10"N., 79°50'47"W.) - Strathy Township
- Hush Hush Lake (47°08'12"N., 80°02'54"W.) - Cynthia Township
- Indian Lake (46°28'05"N., 79°08'19"W.) - French Township
- Lake 697 (46°29'51"N., 79°04'00"W.) - Butler Township
- Lake 2 (Pothole 2) (46°30'12"N., 79°09'44"W.) - French Township
- Little McConnell Lake (46°45'12"N., 79°20'13"W.) - McAuslan Township
- Love Lake (45°59'20"N., 79°19'47"W.) - Himsforth Township
- Malloch Lake (47°04'43"N., 80°03'04"W.) - Cynthia Township
- Mirror Lake (46°25'24"N., 79°07'05"W.) - Phelps Township
- Montreuil Lake (46°25'54"N., 78°54'28"W.) - Mattawan Township
- Mowat Lake (47°28'51"N., 79°57'37"W.) - Barr Township
- Mug Lake (46°44'33"N., 79°22'30"W.) - McAuslan Township
- Norway Lake (46°45'08"N., 79°15'08"W.) - Wyse Township
- Pine Lake (46°44'47"N., 79°16'39"W.) - McAuslan Township
- Pole Lake (46°43'44"N., 79°21'51"W.) - McAuslan Township
- Price Lake (46°58'03"N., 80°07'32"W.) - Phyllis Township
- Quarry Lake (46°43'43"N., 79°21'12"W.) - McAuslan Township
- Redbark Lake (46°59'45"N., 80°09'55"W.) - Joan Township
- Robert Lake (Head Lake) - (47°16'01"N., 79°51'36"W.) - Brigstocke Township
- Roko Lake (47°07'12"N., 80°02'52"W.) - Cynthia Township
- Round Lake (46°46'34"N., 79°18'55"W.) - McAuslan Township
- Secord Lake (46°45'25"N., 79°24'54"W.) - La Salle Township
- Side Rock Lake (47°04'36"N., 80°03'34"W.) - Cynthia Township
- Strathcona Lake 25 (47°01'23"N., 79°46'40"W.) - Strathcona Township

- Teasdale Lake (46°21'20"N., 79°02'30"W.) - Olrig Township
- Turtle Lake (46°09'15"N., 79°01'52"W.) - Boulter Township
- Whitefawn Lake (46°23'23"N., 79°27'53"W.) - Widdifield Township

Lake Trout

Additional Fishing Opportunities

Season: open all year

- Crooked Lake (46°02'45"N., 79°50'36"W.) - Patterson Township
- Hearst Lake (47°17'28"N., 79°45'34"W.) - Gillies Limit Township
- Justin Lake (First Justin) (47°20'36"N., 79°53'27"W.) - Coleman Township
- Kingston Lake (47°35'17"N., 80°05'39"W.) - Cane Township
- Kitt Lake - (47°21'03"N., 79°55'28"W.) - Kittson Township
- McNab Lake (47°09'48"N., 79°40'18"W.) - Best Township
- Roosevelt Lake (47°15'38"N., 79°42'45"W.) - Gillies Limit Township
- Stormy Lake (46°04'47"N., 79°46'29"W.) - Patterson Township
- Threetrails Lake (46°44'07"N., 79°16'18"W.) - McAuslan Township
- Tooth Lake (47°10'53"N., 79°30'31"W.) - South Lorrain Township

Season: closed all year

- Florence Lake (47°13'36"N., 80°33'09"W.) - Dundee Township

Waterbody Exceptions

Cut Lake (46°46'N., 79°16'W.) - McAuslan Township

- Live fish may not be used as bait or possessed for use as bait
- Fish sanctuary - no fishing from January 1 to April 30 and October 1 to December 31

French River Provincial Park - waters lying south of the Five Finger Rapids, and west of the Chaudière Dam downstream to the Highway 69 bridge including Wolseley Bay, the North Channel of the

French River, 18 Mile Bay, Ranger Bay and Dry Pine Bay, and the waters of Cross Lake lying west of Highway 536 in Cherriman Township

- Largemouth and Smallmouth Bass combined: S-4 and C-2; none between 33-43 cm, not more than 1 greater than 43 cm
- Muskellunge - open from 1st Saturday in June to December 15
- Northern Pike - open January 1 to March 31 and third Saturday in May to December 31
- Northern Pike - S-4 and C-2; none between 53-86 cm, not more than 1 greater than 86 cm
- Walleye and Sauger: open from January 1 to March 31 and third Saturday in May to December 31
- Walleye and Sauger combined: S-4 and C-2; none between 40-60 cm, not more than 1 greater than 60 cm

Green Lake - Parkman Township

- Live fish may not be used as bait or possessed for use as bait
- Brook Trout - open from May 1 to September 30

Lake Nipissing - Iron Island vicinity, 100 m around shore

- Fish sanctuary - no fishing from March 16 to Friday before third Saturday in May

Lake Nipissing - Wasi Falls, waters of Lake Nipissing lying east of the east boundary of Lot 9, Concession 24, and south of a line joining this projection where it meets Lake Nipissing to the northwest tip of Burford Point, and mouth of the Wistiswasing River (North Himsworth Township)

- Fish sanctuary - no fishing from March 16 to May 31 and October 1 to November 30

Lake Nipissing - including the waters of the French River from the Chaudière and the Little Chaudière dams to Lake Nipissing; the west bay of Lake Nipissing (Haddo Township); the northwest bay of Lake Nipissing to the falls of MacPherson Creek; the Sturgeon River from Lake

Nipissing to the dam at Sturgeon Falls; the Veuve River from Lake Nipissing to the chutes located in Lot 5 in Concession 1 (Caldwell Township); the South River from Lake Nipissing to Highway 654; and the entire West Arm of Lake Nipissing including Cross Lake

- Closed to all species - from March 16 to Friday before third Saturday in May and December 1 to December 31.
- Largemouth and Smallmouth Bass - open from third Saturday in June to November 30
- Muskellunge - open from third Saturday in June to November 30
- Northern Pike - S-4; not more than 2 greater than 61 cm, of which not more than 1 is greater than 86 cm, and C-2; not more than 1 greater than 61 cm, none greater than 86 cm
- Walleye and Yellow Perch - open from January 1 to March 15 and third Saturday in May to October 15
- Walleye - S-2 and C-1; none less than 46 cm

Lake Temagami

- Only live or dead baitfish less than 13 cm in length may be used as bait
- Lake Whitefish - S-25 and C-12
- Walleye - none between 46-60 cm, not more than 1 greater than 60 cm

Lake Temagami - Scholes and Phyllis Townships, Gull Creek from dam at outlet of Gull Lake to 200 m in an arc extending into Lake Temagami

Lake Temagami - Joan Township, Kokoko Bay

- Lake Temagami** - Briggs and Joan Townships, Spawning Creek from Spawning Lake including all waters of Spawning Bay and Loon Bay
- Fish sanctuary - no fishing from March 15 to June 15

McConnell Lake - McAuslan Township

- Live fish may not be used as bait or possessed for use as bait
- Fish sanctuary - no fishing from January 1 to April 30 and October 1 to December 31

Obabika Lake (47°00'60"N., 80°16'26"W.)
- Belfast Township

- Lake Trout - closed all year
- Northern Pike - S-2; only 1 greater than 86 cm, and C-1; must be less than 86 cm
- Smallmouth Bass - S-2 and C-1

Shanty Lake - McAuslan Township

- Live fish may not be used as bait or possessed for use as bait
- Fish sanctuary - no fishing from January 1 to April 30 and October 1 to December 31

Surecatch Lake - Parkman Township

- Live fish may not be used as bait or possessed for use as bait
- Brook Trout - open from May 1 to September 30

Trout Lake - (46°19'09"N., 79°20'11"W.)
- City of North Bay and East Ferris Township

- Lake Trout and Atlantic Salmon - open from third Saturday in June to Friday before fourth Saturday in June
- Lake Trout and Atlantic Salmon - S-1 and C-1; must be less than 55 cm

Trout Lake - East Ferris Township, lying between the water's edge and a line drawn 30 m in perpendicular distance from Poplar Island along the west side of the island from the northwest tip of the island to the southwest tip of the island

Trout Lake - Widdifield Township, lying within a line drawn from the most westerly tip of Kirkwood Island, commonly known as Camp Island extending 50 m into the water and paralleling the shore for a distance of 500 m then back to the south shore

- Fish sanctuary - no fishing from May 15 to July 31

Bait Restrictions

Live fish may not be used as bait or possessed for use as bait

- Big Webb Lake - Parkman Township
- Camp Lake - McAuslan Township
- Cut Lake - see Waterbody Exceptions for details

- Emerald Lake - McAuslan Township
 - Green Lake - see Waterbody Exceptions for details
 - Jimmie Lake - McAuslan Township
 - Klock Lake - Klock Township
 - Little Clear Lake - Boulter Township
 - Little Webb Lake - Parkman Township
 - McConnell Lake - see Waterbody Exceptions for details
 - Modder Lake - McAuslan and La Salle Townships
 - Mug Lake - McAuslan Township
 - Norway Lake - Wyse Township
 - Orient Lake - McAuslan Township
 - Otter Lake - Parkman Township
 - Pascal Lake - Boulter Township
 - Pine Lake - McAuslan Township
 - Planet Lake - Van Nostrand Township
 - Pole Lake - McAuslan Township
 - Quarry Lake - McAuslan Township
 - Rainbow Lake - Van Nostrand Township
 - Round Lake - McAuslan Township
 - Shanty Lake - see Waterbody Exceptions for details
 - Slade Lake - Leo Township
 - Spring Lake - McAuslan Township
 - Surecatch Lake - see Waterbody Exceptions for details
 - Troutbait Lake - Parkman Township
 - Turtle Lake - Boulter Township
 - Wolf Lake - Sisk Township
- Only live or dead baitfish less than 13 cm in length may be used as bait**
- Lake Temagami - see Waterbody Exceptions for details

Fish Sanctuaries

No fishing - closed all year

- Four Mile Creek - Widdifield Township, within Lots 8 and 9 in Concession B
- **Liberty Lake - Aston Township**
- Whirligig Lake - Gamble Township
- Whitepine Lake - Gamble Township

No fishing - January 1 to April 30 and October 1 to December 31

- Blue Lake - McAuslan Township
- Cut Lake - see Waterbody Exceptions for details

- McConnell Lake - see Waterbody Exceptions for details
- Shanty Lake - see Waterbody Exceptions for details

No fishing - January 1 to Friday before third Saturday in May

- Wicksteed Lake - Kenny, Gladman, Flett, Gooderham and Milne Townships

No fishing - March 1 to Friday before third Saturday in May

- Kaibuskong Bay - in front of Bonfield Township
- Kaibuskong River - from Sheedy Lake to Kaibuskong Bay
- Sharpes Creek - from Highway 17 to Kaibuskong Bay
- Talon Lake - in front of Orlig and Calvin Townships, including Kaibuskong Bay

No fishing - March 1 to June 15

- Restoule Lake and River - Patterson Township, that part in Lots 24 and 25, Concessions 3 and 4

No fishing - March 15 to June 15

- Lake Temagami - see Waterbody Exceptions for details

No fishing - March 16 to Friday before third Saturday in May

- Duchesney Creek - City of North Bay and Commanda Township, from Lake Nipissing to the C.N.R. bridge
- Ferrim Creek - Cynthia Township, from Ferrim Lake to 200 m in an arc extending out into Kokoko Lake
- Lake Nipissing - see Waterbody Exceptions for details

No fishing - March 16 to Friday before third Saturday in May and October 1 to November 30

- South River - the waters of the South River lying between the bridge that forms part of Highway 654 and the northerly boundary of Concession 14 (Nipissing Township)

No fishing - March 16 to May 31 and October 1 to November 30

- Lake Nipissing - see Waterbody Exceptions for details

No fishing - April 1 to June 15

- Anima-Nipissing River - Banting Township, from 100 m in an arc extending out into Red Squirrel Lake to a point upstream 400 m
- Friday Creek - Cassels Township, including the waters in an arc extending 200 m out into Obashkong Lake
- Kanichee Creek - Strathy Township, from Kanichee Lake to 200 m in an arc extending out into Net Lake
- Mattawa River - Papineau and Mattawan Townships, from the face of Hurdman Dam to 200 m downstream
- Montreal River - Town of Latchford and Gillies Limit Township, Ontario Hydro dam to 30 m south of the Ontario Northland Transportation Commission bridge
- Montreal River - Gillies Limit Township, Fountain Falls 150 m upstream and downstream from the concrete abutments

- Net Creek - Cassels Township, from dam on Net Lake to 200 m in an arc extending out into Cassels Lake
- Net Lake - Temagami Township, 100 m easterly and westerly of the O.N.R. bridge
- Thieving Bear Creek - Best Township, from Thieving Bear Lake to 200 m in an arc extending out into Net Lake
- Tomiko River - from the bridge in Lot 8, Concession 4, Grant Township to Tomiko Lake

No fishing - April 1 to Friday before third Saturday in May

- Memesagamesing Lake and Rainy Creek - Hardy Township, waters that fall within Lots 22, 23, 24, 25, Concession 7.

No fishing - May 15 to July 31

- Trout Lake - see Waterbody Exceptions for details

Fight The Spread!

CLEAN, DRAIN AND DRY YOUR BOAT.

Invasive species make unwelcome hitchhikers. Look before you leave—follow these 3 simple steps when you remove your boat from the water. Help fight the spread!



Step 1 CLEAN YOUR BOAT

Clean off all visible mud, vegetation and other debris before you leave the boat launch.



Step 2 DRAIN YOUR BOAT

Drain all standing water by pulling the plug on your transom and livewell before leaving the launch.



Step 3 DRY YOUR BOAT

Dry your boat for 2-7 days in sunlight before transporting it to another waterbody.