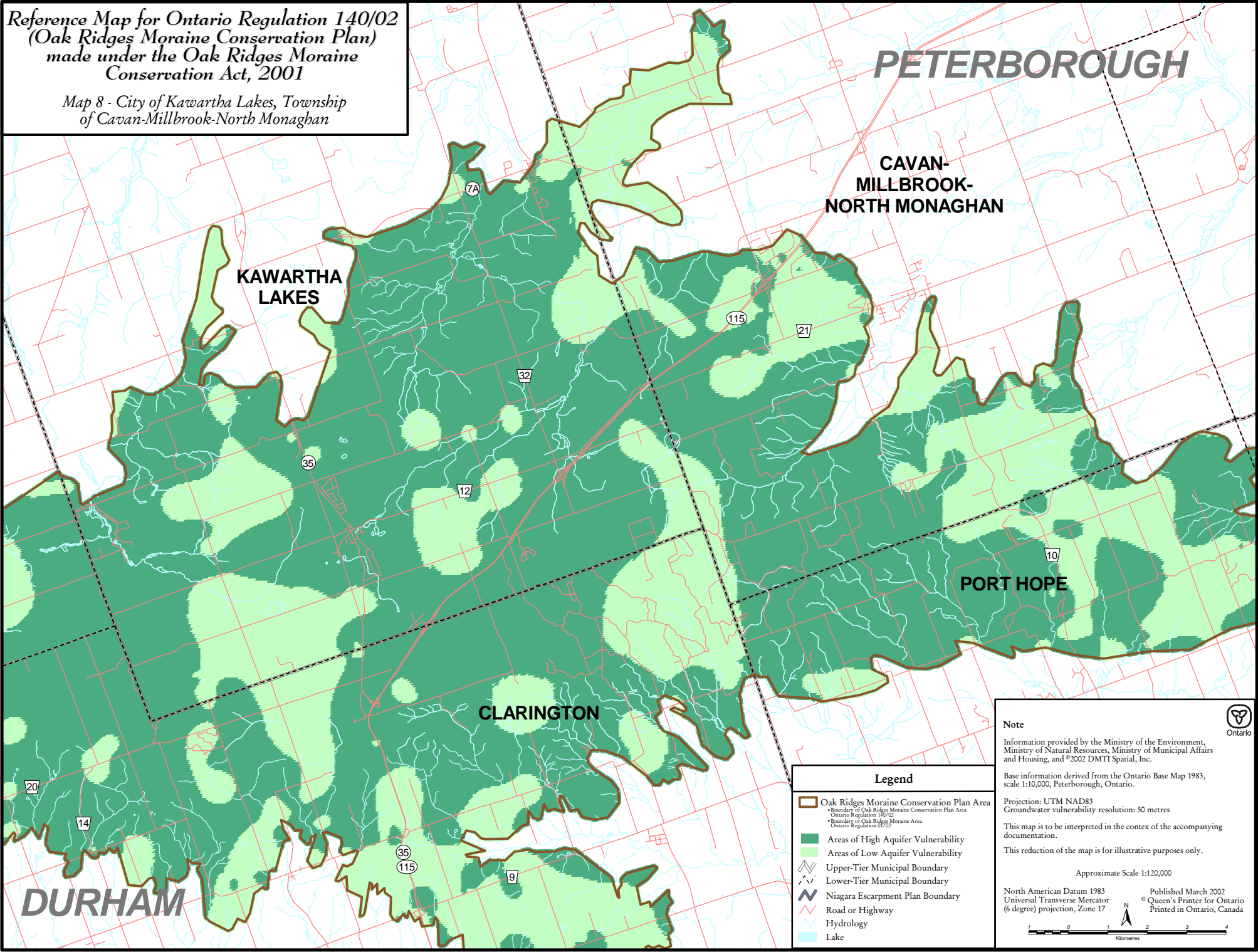


**Reference Map for Ontario Regulation 140/02
(Oak Ridges Moraine Conservation Plan)
made under the Oak Ridges Moraine
Conservation Act, 2001**

*Map 8 - City of Kawartha Lakes, Township
of Cavan-Millbrook-North Monaghan*



PETERBOROUGH

**CAVAN-
MILLBROOK-
NORTH MONAGHAN**

**KAWARTHA
LAKES**

PORT HOPE

CLARINGTON

DURHAM

Legend

- Oak Ridges Moraine Conservation Plan Area
 - Boundary of Oak Ridges Moraine Conservation Plan Area Ontario Regulation 140/02
 - Boundary of Oak Ridges Moraine Area Ontario Regulation 17/02
- Areas of High Aquifer Vulnerability
- Areas of Low Aquifer Vulnerability
- Upper-Tier Municipal Boundary
- Lower-Tier Municipal Boundary
- Niagara Escarpment Plan Boundary
- Road or Highway
- Hydrology
- Lake

Note

Information provided by the Ministry of the Environment, Ministry of Natural Resources, Ministry of Municipal Affairs and Housing, and ©2002 DMTI Spatial, Inc.

Base information derived from the Ontario Base Map 1983, scale 1:10,000, Peterborough, Ontario.

Projection: UTM NAD83
Groundwater vulnerability resolution: 50 metres

This map is to be interpreted in the context of the accompanying documentation.

This reduction of the map is for illustrative purposes only.

Approximate Scale 1:120,000

North American Datum 1983
Universal Transverse Mercator
(6 degree) projection, Zone 17

Published March 2002
© Queen's Printer for Ontario
Printed in Ontario, Canada

