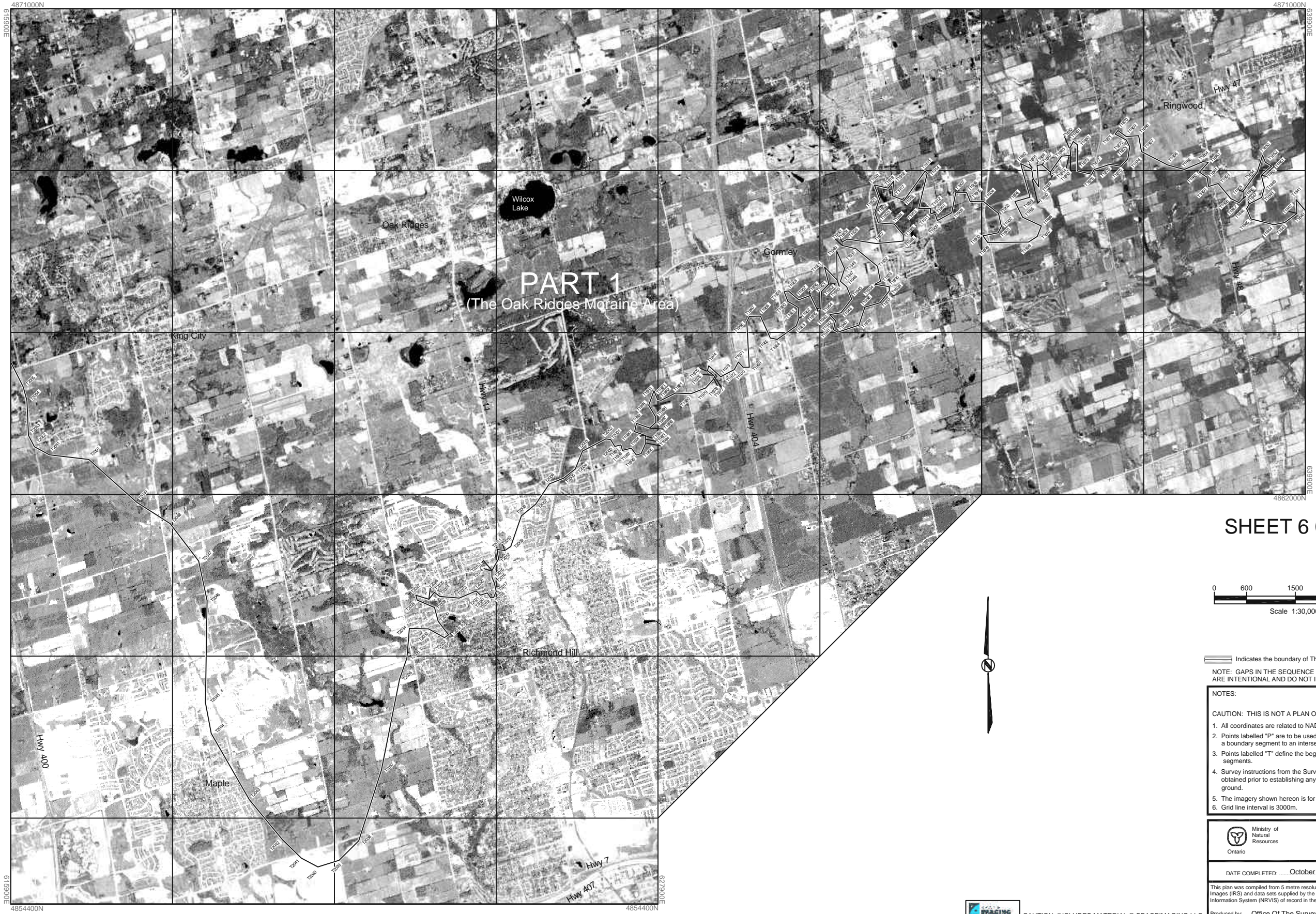
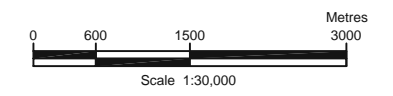


# PLAN OF THE BOUNDARY OF THE OAK RIDGES MORaine AREA



SHEET 6 OF 18



— Indicates the boundary of The Oak Ridges Moraine Area.  
 NOTE: GAPS IN THE SEQUENCE OF "T" POINT NUMBERS ARE INTENTIONAL AND DO NOT INDICATE MISSING DATA.

- NOTES:
- CAUTION: THIS IS NOT A PLAN OF SURVEY.
1. All coordinates are related to NAD83 CSRS(98)UTM Zone 17.
  2. Points labelled "P" are to be used for the purpose of producing a boundary segment to an intersection.
  3. Points labelled "T" define the beginning and end of boundary segments.
  4. Survey instructions from the Surveyor General must be obtained prior to establishing any of the boundaries on the ground.
  5. The imagery shown hereon is for illustrative purposes only.
  6. Grid line interval is 3000m.



DATE COMPLETED: .....October.....2001.....

This plan was compiled from 5 metre resolution - Indian Remote Sensor Images (IRS) and data sets supplied by the Natural Resources and Values Information System (NRVIS) of record in the Ministry of Natural Resources.  
 Produced by: Office Of The Surveyor General