

# Lithium

## Highlights

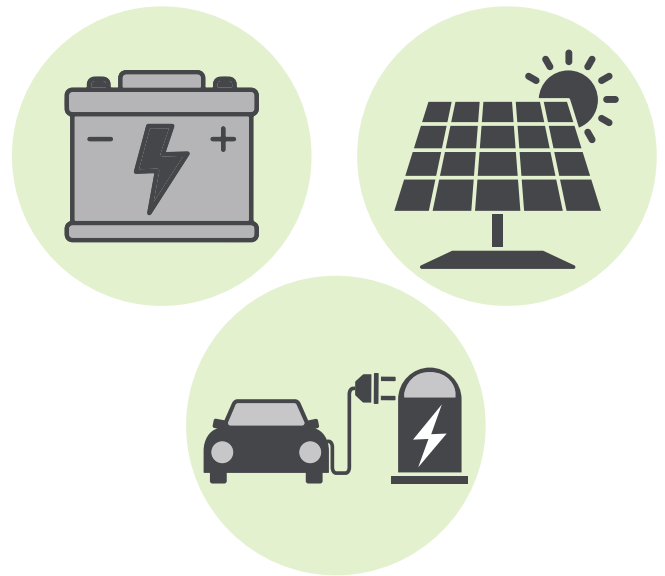
Lithium is found in most battery-operated items, such as smartphones, portable computers and electric vehicles.

Lithium is also used in glass and ceramics to increase strength and durability, especially at high temperatures.



Demand for this strategic commodity is expected to increase in the coming years as the market for batteries that power electric vehicles and other clean technologies grows.

Ontario has hard-rock lithium deposits that are being explored actively.

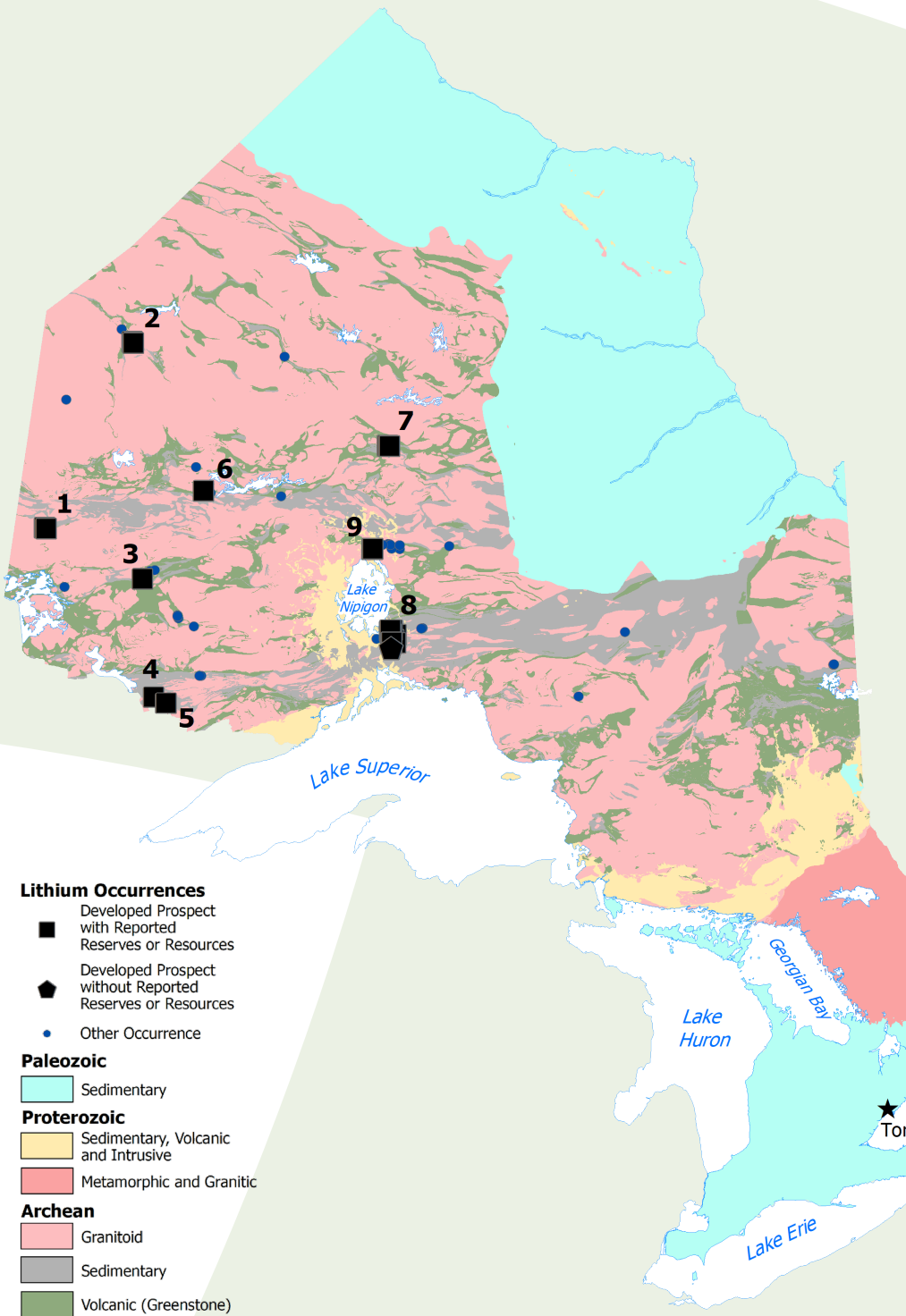


## Ontario's investment advantages

### World's largest mining capital market: Toronto Stock Exchange (TSX) & TSX Venture Exchange

- Global leader in mining
- Open to global investment
- Committed mining communities
- Political stability
- Competitive business costs and tax regime
- Education and training network
- 100+ years of mineral production
- Government funding and support
- Canadian economic powerhouse
- Diverse and widespread mineral deposits

# Lithium in Ontario



Location	Name
1	Big Mack
	Separation Rapids
2	Spark Pegmatite
	PAK Lithium Project
3	Mavis Lake North Zone
4	Wisa Lake
5	International Lithium
6	McCombe
	Rubellite Dyke
7	Pollucite Dyke
	Jackpot
8	Brink
	Conway
	Parole
	Line 60 Lithium
	Nama Creek MZN
	Vegan
	Nama Creek MZSW
	McVittie
	West Dyke
	MNW
9	North Aubry
	South Aubry

## Lithium Occurrences

- Developed Prospect with Reported Reserves or Resources
- ⬠ Developed Prospect without Reported Reserves or Resources
- Other Occurrence

## Paleozoic

- Sedimentary

## Proterozoic

- Sedimentary, Volcanic and Intrusive
- Metamorphic and Granitic

## Archean

- Granitoid
- Sedimentary
- Volcanic (Greenstone)

**Note:** All monetary values are in Canadian dollars. This information is accurate to April 20, 2023.

Printed in Ontario, Canada on recycled paper.  
© King's Printer for Ontario, 2023.



For more information about Ontario's mineral resources:



[ontario.ca/mineralssector](https://ontario.ca/mineralssector)

[mineralsinfo@ontario.ca](mailto:mineralsinfo@ontario.ca)

+1 888 415-9845