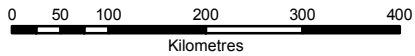


Snapping turtle in Ontario

as recorded by the Ontario Natural
Heritage Information Centre as of
February 29, 2012

- Communities
- Roads
- Species occurrence

Areas in yellow represent known occurrences of this species. For animals this includes areas such as breeding colonies, breeding ponds, denning sites and hibernacula. For plants this is usually where it occurs naturally.

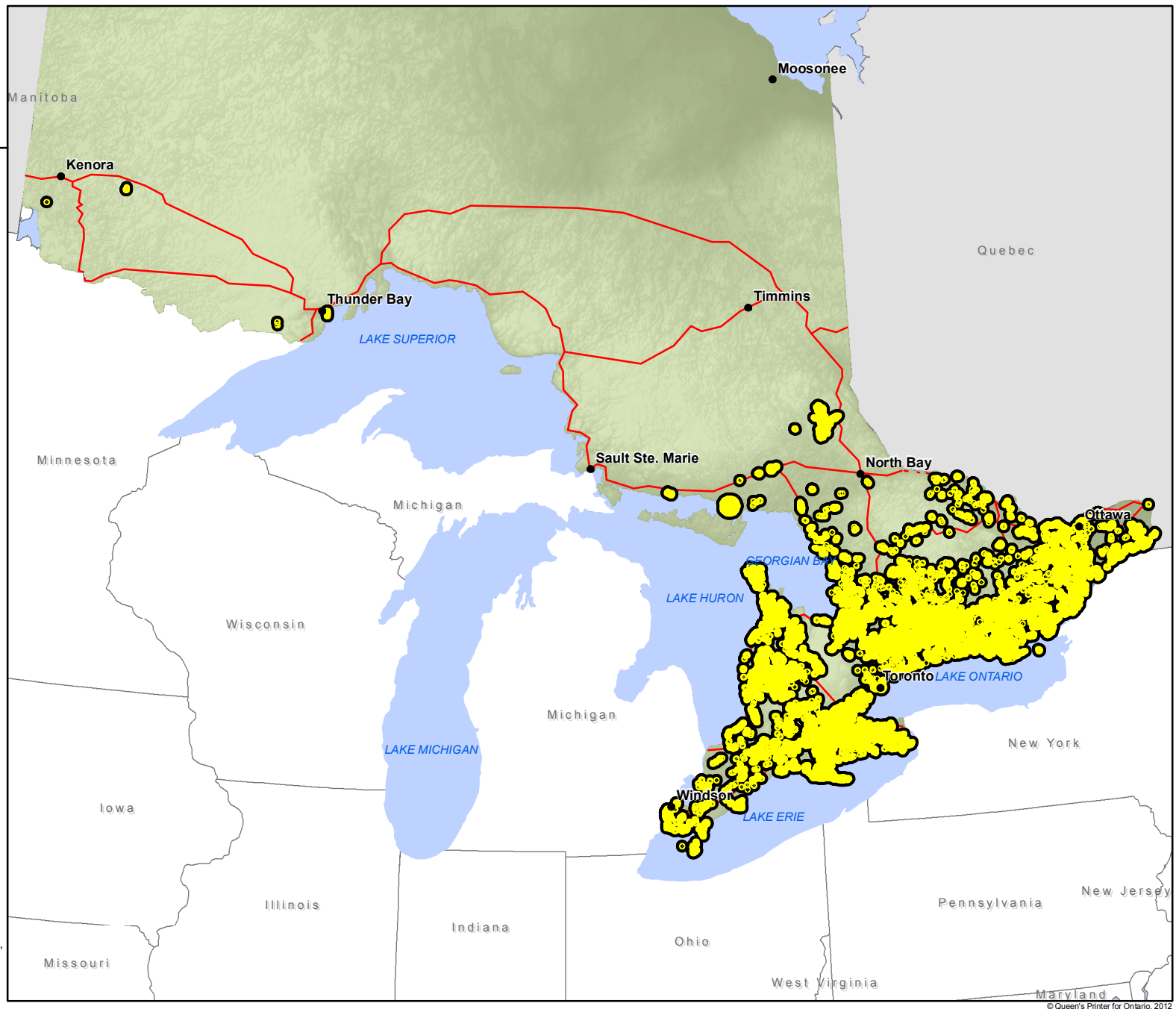


For information on species at risk, visit: ontario.ca/speciesatrisk

To learn more about the Ontario Natural Heritage Information Centre, visit: nhic.mnr.gov.on.ca

Note:

This map should not be relied on as a complete and accurate representation for locations of species at risk, routes or locations, nor as a guide to navigation. The Ontario Ministry of Natural Resources shall not be liable in any way for the use of, or reliance upon, this map or any information on this map.



© Queen's Printer for Ontario, 2012