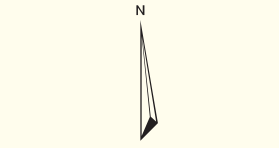
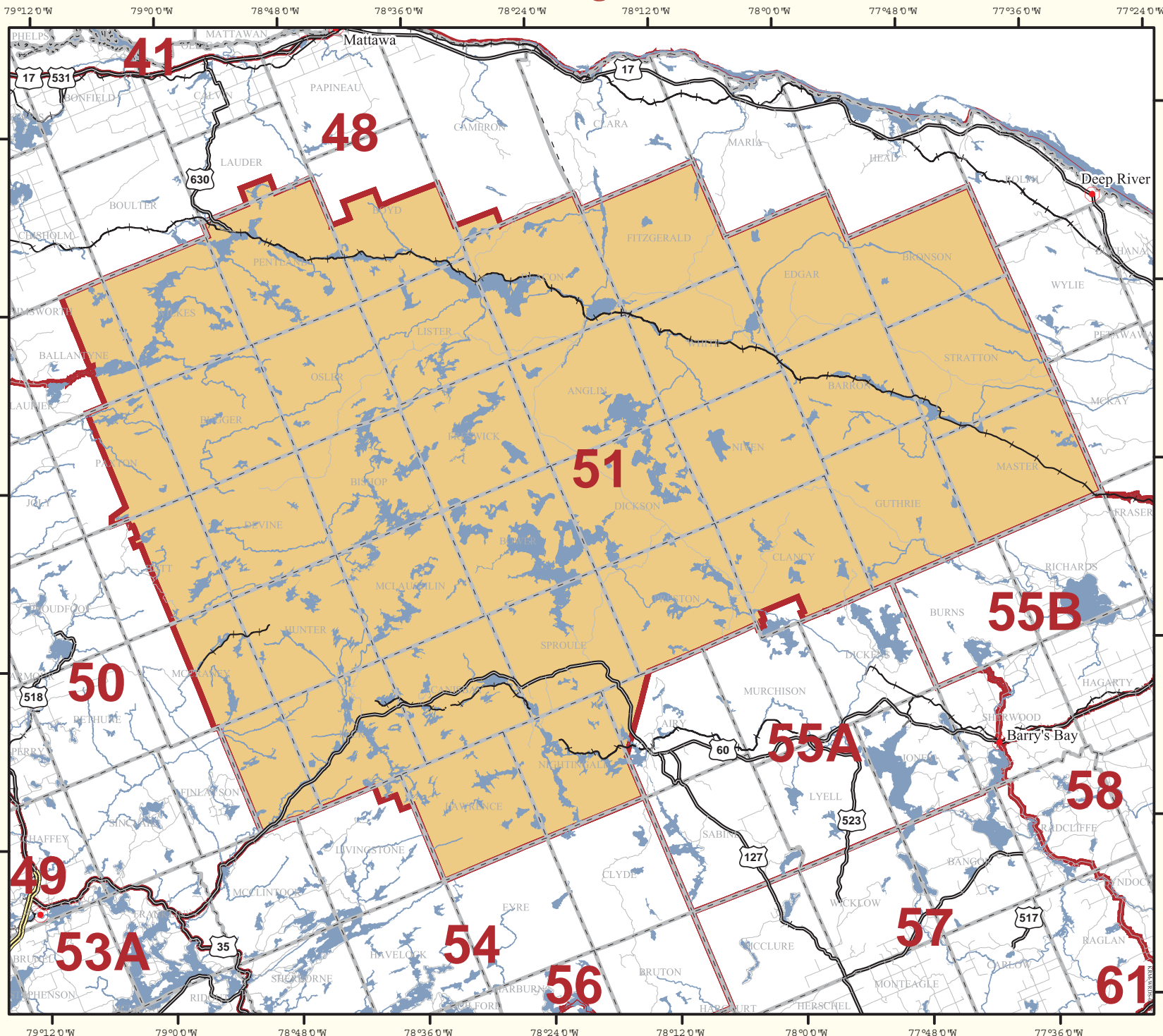
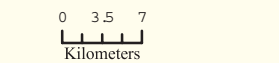


Wildlife Management Unit - 51



- Legend**
- Settlements
 - Geographic Township Boundaries
 - Provincial Highway
 - Municipal Highway
 - Local Street/Road
 - Railway
 - Lakes
 - Rivers & Creeks
 - Approximate WMU Boundaries
 - WMU of Interest



© 2007, Queen's Printer for Ontario

This map has been prepared by the Ministry of Natural Resources for information, consultation and discussion purposes only. The Ministry does not guarantee the accuracy or completeness of the contents and assumes no liability for any consequences arising out of anyone's use of, or reliance on, the information depicted.

For information on exact boundaries, contact the Ministry of Natural Resources.