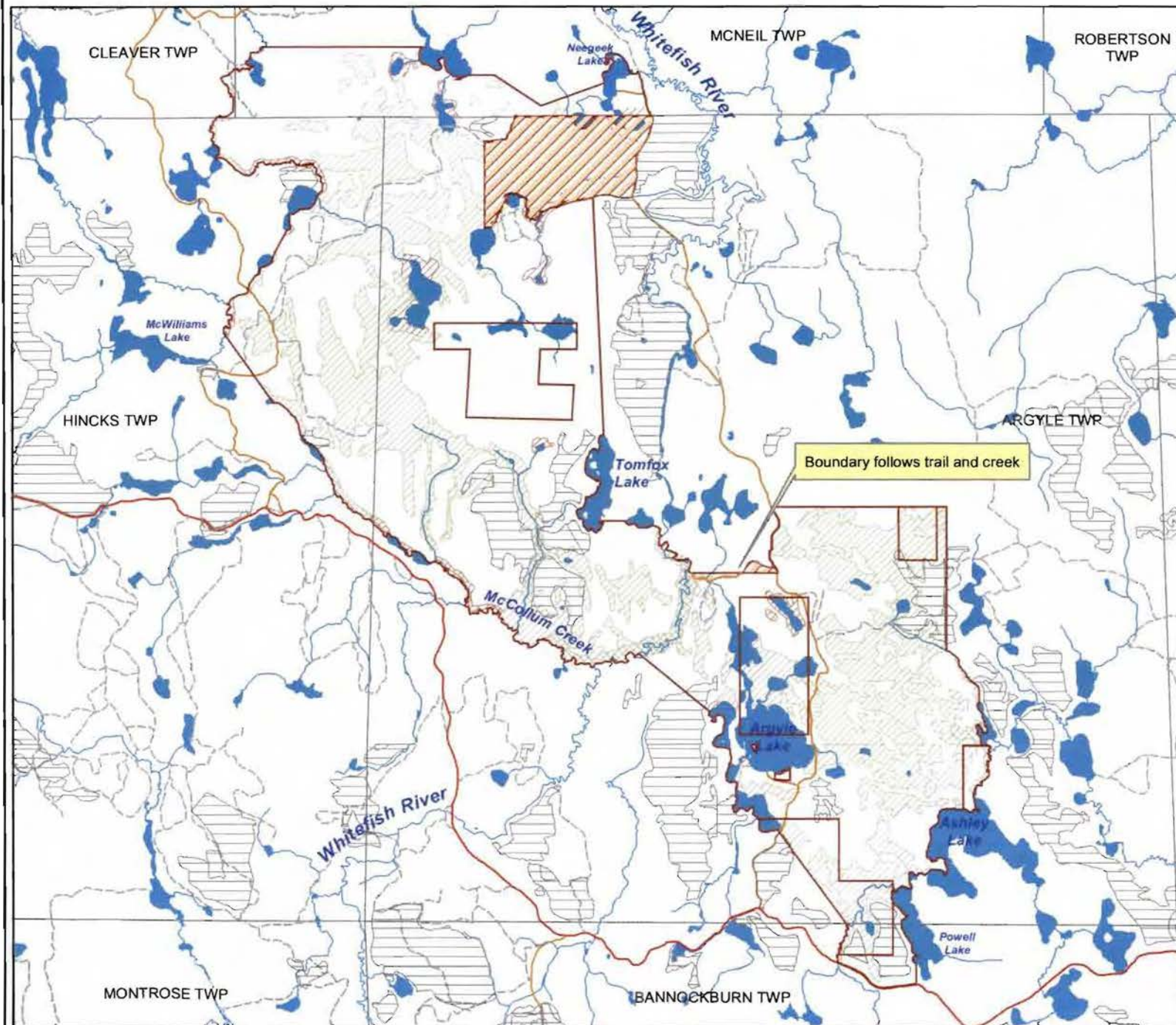
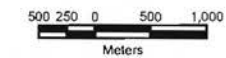


# C1596 Whitefish River Sandy Till CR


## Ecological Considerations

Scale 1:65,000



### Legend

#### Wetlands

-  Treed Muskeg
-  Open Muskeg
-  Brush/Alder
-  Rock
-  Depletion (Harvest)



Map produced by the Ministry of Natural Resources,  
 Northeast Region Planning Unit  
 P.O. Bag 3020, Hwy 101 East,  
 South Porcupine, ON P0N 1H0

February 2004

Sources:  
 Species: OMNR Forest Resource Inventory  
 Depletions: OMNR Kirkland Lake District  
 Base Data: OMNR NRVIS  
 Projection: UTM NAD83 CNT Zone 17

This map is illustrative only. Do not rely on it as a precise indicator of routes or locations, nor as a guide to navigation. This map was produced for Ministry of Natural Resources internal use only and is not intended for external distribution.

