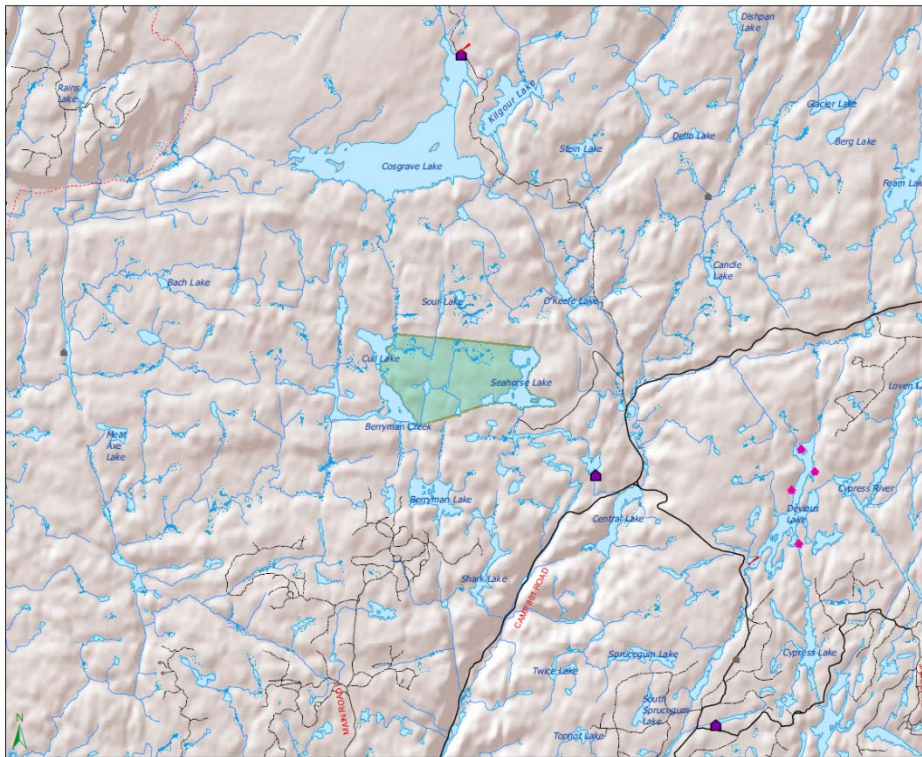


## Seahorse Lake Conservation Reserve (C2232)



### Infrastructure

- Access Point
- Boat Cache (Commercial)
- Boat Cache (Private)
- Camping Site
- Picnic Site
- Trapper Cabin
- Tourism Camp
- Recreation Camp
- Cottage Site
- Building
- Transmission Line
- Pipeline

### Base Features

- Community
- Aboriginal Community
- Lakes
- Stream (Permanent)
- Stream (Intermittent)
- Patent Land
- Wetland Unit
- Conservation Reserve

### Transportation

- Expressway / Highway
- Secondary Highway
- Local Roads
- Primary Roads
- Branch Roads
- Operational Roads
- Rail Line
- Trail Segment

0 0.5 1 2 KM

Scale = 1:75,000

Published January 2012  
© 2012, Queen's Printer for Ontario

This map is illustrative only.  
Do not rely on it as being a precise indicator of routes,  
locations of features, nor as a guide to navigation.



Projection: Lambert Conformal Conic  
Datum: North American Datum 1983  
Base Derived From: LTO (Land Information Ontario)  
Produced by:  
Nipigon District, Ontario Ministry of Natural Resources