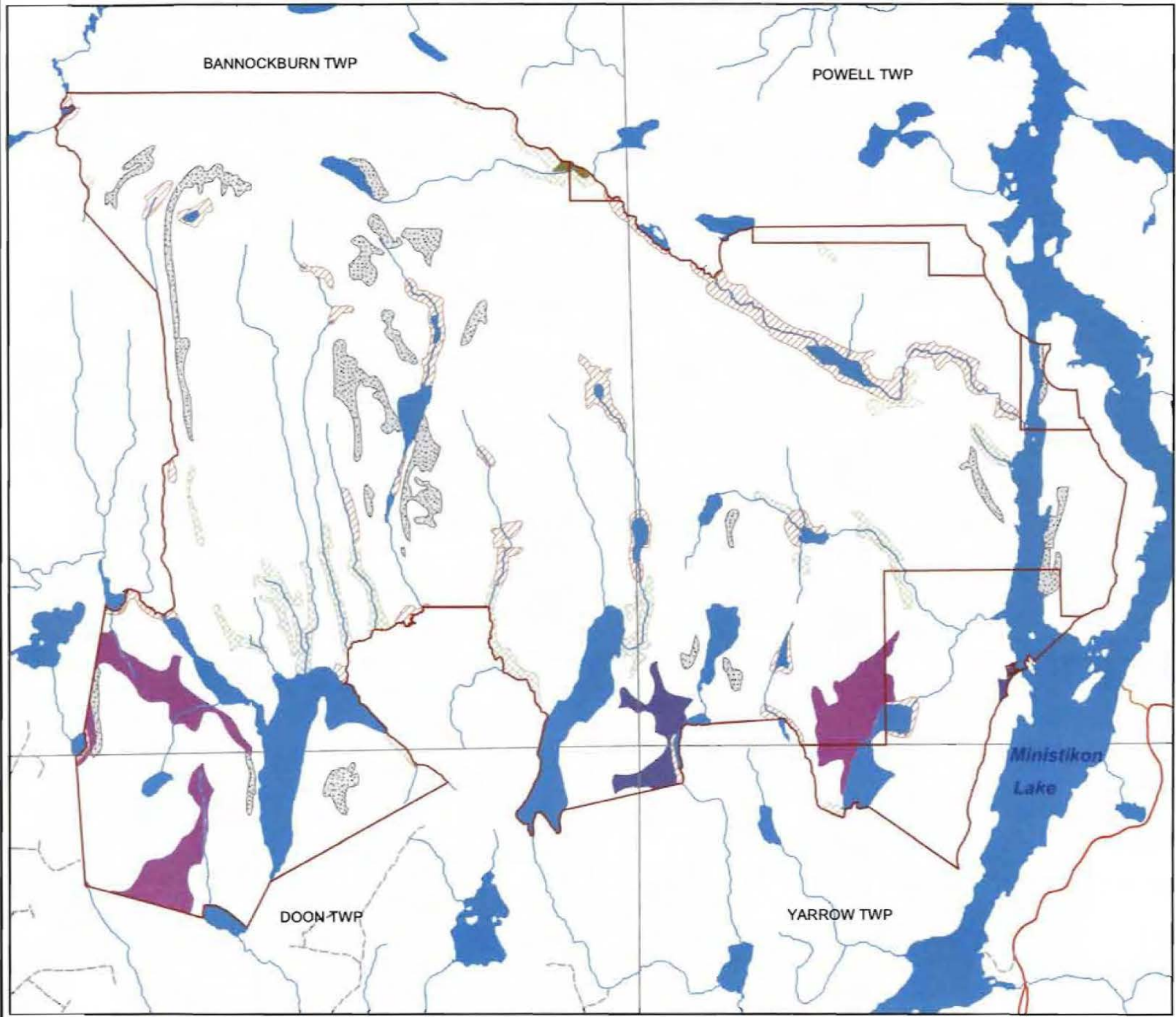


# C1600 Mistinikon Lake Uplands

## OLD GROWTH

Scale 1:48,000



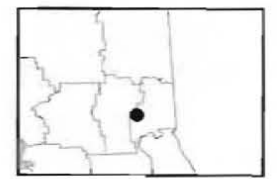
### Legend

#### Standard Forest Unit

- BW1
- MW2
- SB1

#### Wetlands

- Treed Muskeg
- Open Muskeg
- Brush/Alder
- Rock



Map produced by the Ministry of Natural Resources,  
Northeast Region Planning Unit  
P.O. Bag 3020, Hwy 101 East,  
South Porcupine, ON P0N 1H0  
February 2004



Sources:  
Species: Forest Resource Inventory  
Roads: OMNR Kirkland Lake District (Preliminary update)  
Base Data: OMNR NRVIS  
Projection: UTM NAD83 CNT Zone 17

This map is illustrative only. Do not rely on it as a precise indicator of routes or locations, nor as a guide to navigation. This map was produced for Ministry of Natural Resources internal use only and is not intended for external distribution.