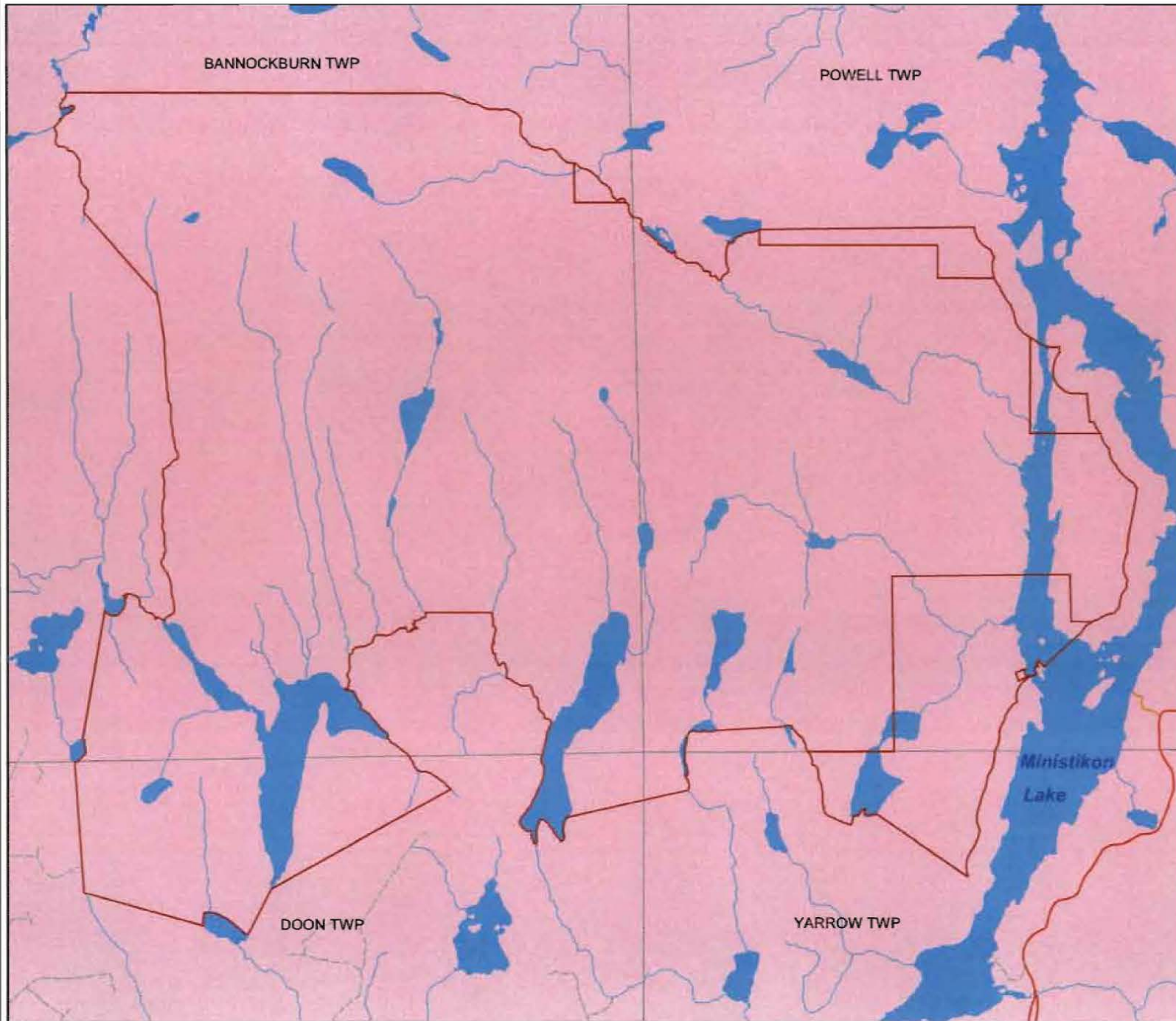


# C1600 Mistinikon Lake Uplands

Map 1b

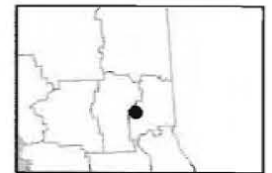


## GEOLOGY

Scale 1:48,000



## Legend



Map produced by the Ministry of Natural Resources,  
Northeast Region Planning Unit  
P.O. Bag 3020, Hwy 101 East,  
South Porcupine, ON P0N 1H0

February 2004

Sources:  
Geology: DGS, Quaternary Geology of Ontario  
Roads: OMNR Kirkland Lake District (Preliminary Update)  
Base Data: OMNR NRVIS  
Projection: UTM NAD83 CNT Zone 17

This map is illustrative only. Do not rely on it as  
a precise indicator of routes or locations, nor as a  
guide to navigation. This map was produced for  
Ministry of Natural Resources internal use only and  
is not intended for external distribution.

