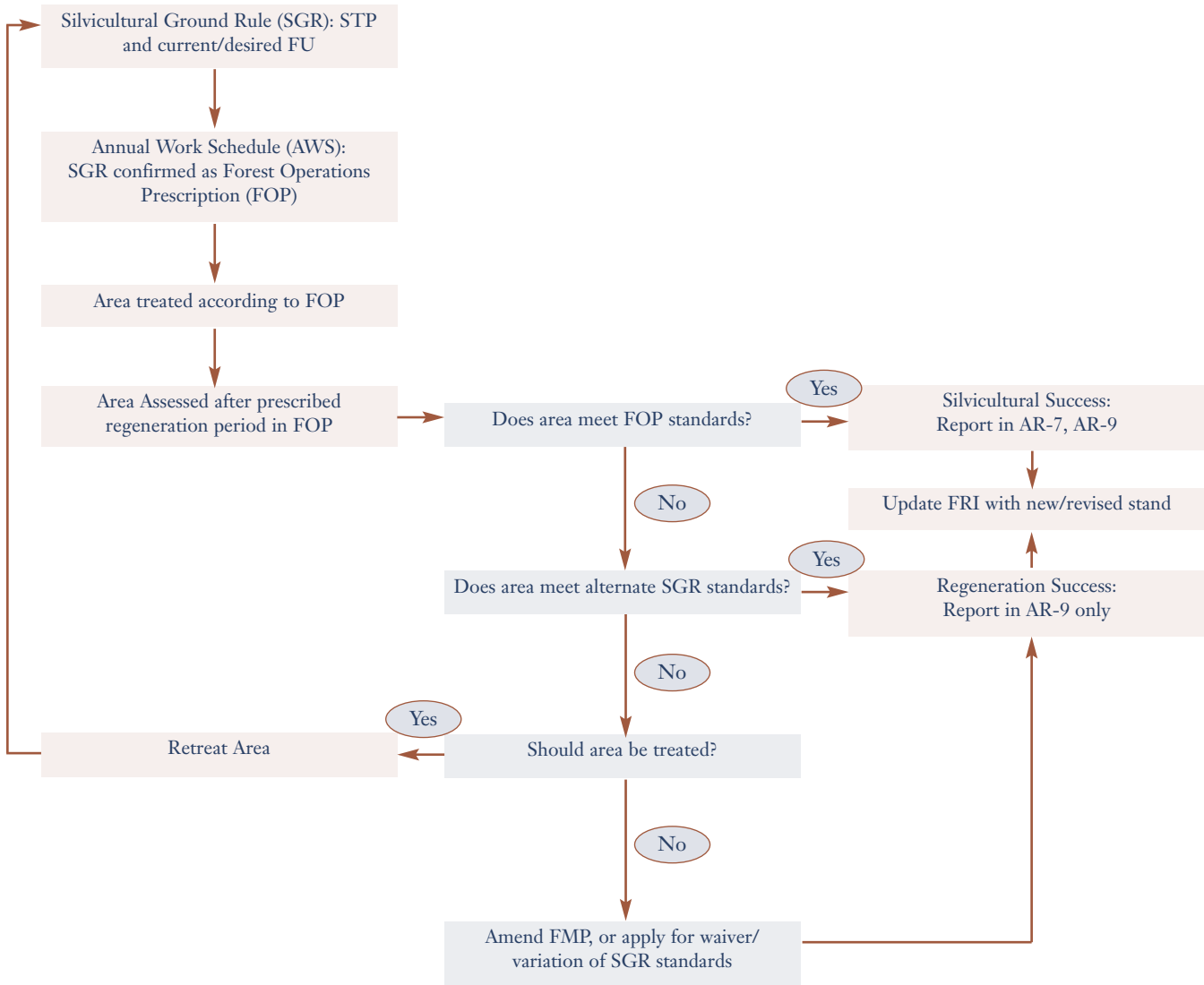


Figure B-2: Silvicultural Effectiveness Decision Process



*Note: This process applies to areas for which the SFL holder has a legal obligation to maintain the forest. Treatment of naturally depleted areas (e.g. fire, windthrow) is at the discretion of the SFL holder. Responsibility defaults to the Crown for areas that SFL holders do not assume responsibility.*