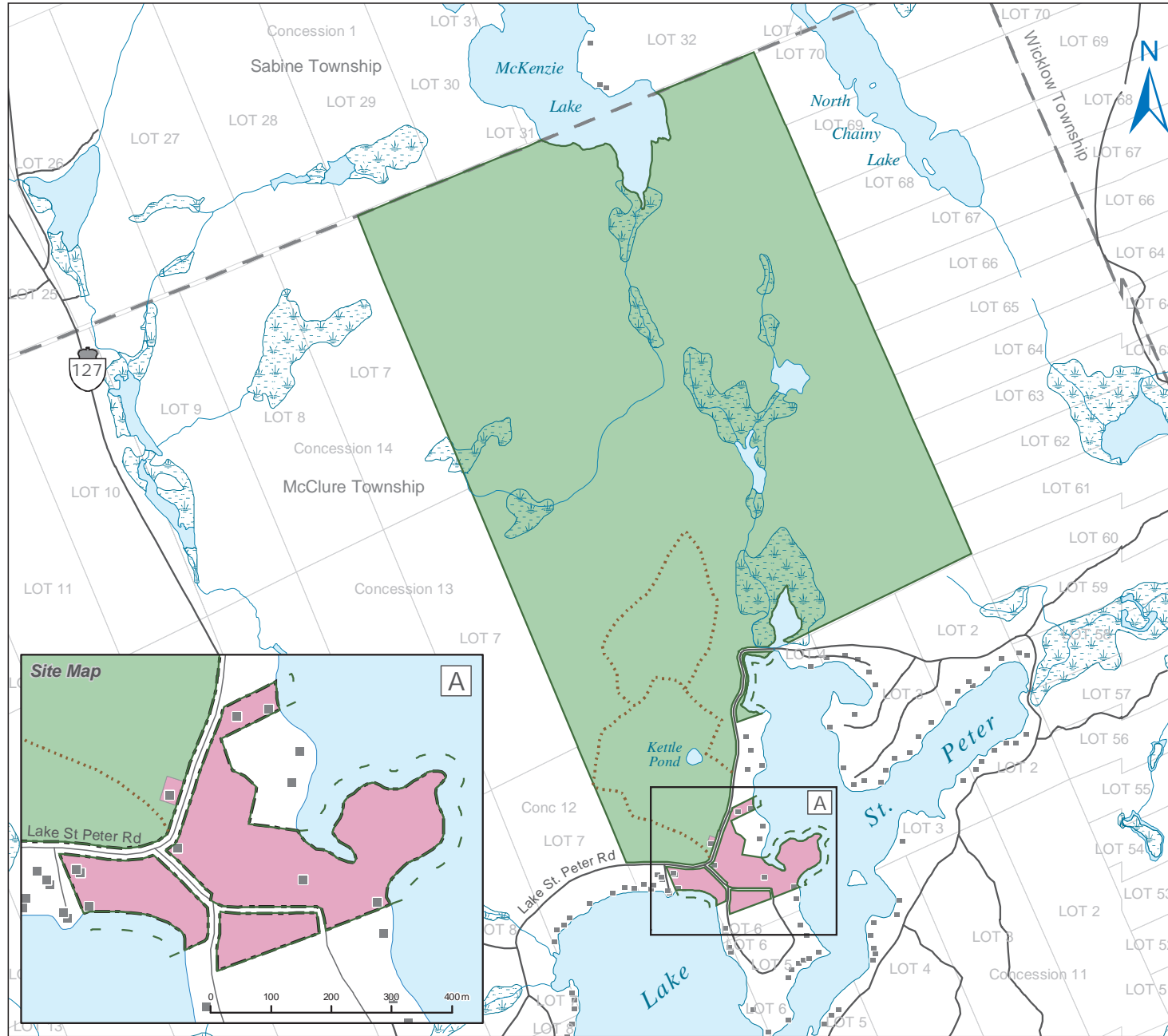


**FIGURE 2**

**PARK BOUNDARY, ZONING AND DEVELOPMENT**



Lake St. Peter



**Legend**

**Line Features**

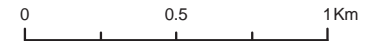
- ..... Hiking Trail
- Road
- Stream / River

**Area Features**

- ▭ Park Boundary Regulated
- - - Park Boundary (Recommended)
- Natural Environment Zone
- Development Zone

**Base Features**

- Building
- Lake
- Wetland
- ▭ Lot
- ▭ Township



Published January 2008  
Copyright 2008, Queen's Printer for Ontario

This map is illustrative only. Do not rely on it as being a precise indicator of routes, locations of features, nor as a guide to navigation.

Projection: UTM Zone 17  
Datum: North American Datum 1983  
Base derived from: NRVIS (Natural Resource Value Information System)  
Produced by: Ontario Parks, Southeast Zone