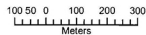





## SURFICIAL GEOLOGY

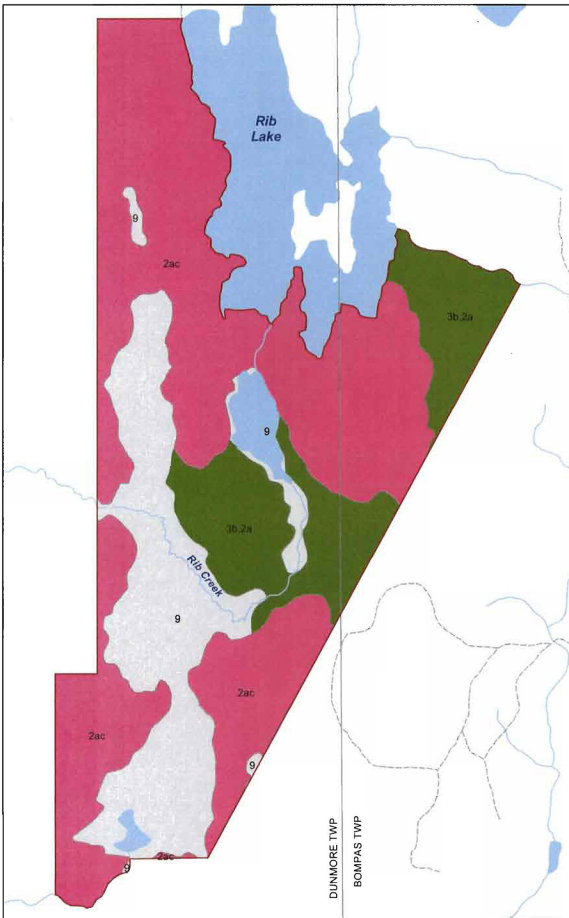
Scale 1:12,000



## Legend

## Geology

-  Organic Deposits  
Unsubdivided
-  Till Deposits Silt to sand  
silt till, Bedrock-Drift  
Complex Drift cover is  
predominantly till
-  Bedrock-Drift Complex  
Drift cover is  
predominantly till, Drift  
cover is discontinuous



Map produced by the Ministry of Natural Resources,  
Northeast Region Planning Unit  
P.O. Bag 3020, Hwy 101 East,  
South Porcupine, ON P0N 1H0

February 2005



Sources:  
Surficial Geology: Rik Kristjansson, OMNR 2002  
Base Data: OMNR NRVIS  
Projection: UTM NAD83 CNT Zone 17

This map is illustrative only. Do not rely on it as a precise indicator of routes or locations, nor as a guide to navigation. This map was produced for Ministry of Natural Resources internal use only and is not intended for external distribution.