



Black Bear Regulations

Information for All Black Bear Hunters

Licence fees can be found on page 14.

Firearms

Big game, including black bears, may only be hunted with a firearm (this includes bows). If you are hunting deer or moose at the same time you are hunting black bears, you may only use or carry (on your person, in a vehicle or boat) a firearm of the type permitted for deer or moose, as the case may be, at that time in that Wildlife Management Unit (WMU). Specifications on rifles, shotguns, bows, bolts and arrows that are permitted when hunting black bear can be found on page 24.

Party Hunting for Black Bears

Party hunting for black bears is permitted during the open season for black bears **under a set of specific conditions.** The list of conditions can be found on page 25.

Sealing and Transporting Black Bears

If you have killed a black bear while hunting alone, you must, **immediately** after the kill and at the kill site, securely **attach the game seal to the animal in the manner described on the instruction panel attached to the seal.** The seal must remain attached while transporting the carcass.

If party hunting for black bears, the member whose game seal is to be used must, immediately after the kill and at the kill site, **securely attach the game seal to the animal in the manner described on the instruction panel attached to the seal.**

A person who seals a black bear must notch out the month, day and time of the kill on the game seal.

Only the hunter whose game seal is to be used is allowed to attach the game seal to the black bear. It is illegal to transfer a game seal in order to seal a black bear.

Other Black Bear Hunting Regulations

It is illegal to hunt black bears within 400 m (437 yd.) of a waste disposal site, regardless of whether the land is Crown or private.

Black Bear Management in Ontario

Bear hunting opportunities in Ontario are dependent on having sustainable black bear populations across the province. Ontario's black bear management program is responsive to the ecological, social and economic interests of the public, and you are encouraged to provide input on how bears are managed locally, including the development of local bear population objectives. You can find out more by contacting your local ministry office for local bear population information and management.

It is illegal to shoot or interfere with black bears in their dens, or damage or destroy their dens.

It is illegal to possess a bear gallbladder that has been separated from the bear carcass. Leave the gallbladder with the entrails after field dressing your bear.

NEW - It is illegal to shoot cubs or female bears accompanied by a cub during the early season. For more information on the pilot project see page 78.

Export and Shipping

See General Regulations, page 30, for information on import, export and shipping.

In some instances, both a Convention on International Trade in Endangered Species of Wild Fauna and Flora (CITES) and a Provincial Export permit are required. Except as outlined below, a resident or non-resident black bear hunter must also contact a ministry office to arrange to obtain a CITES export permit. **Please allow up to 10 days to obtain a permit.**

In some countries, importation of black bears is restricted; requirements for importation should be determined by the exporter prior to shipment.

A Canadian CITES export permit is not required for U.S. or Canadian resident bear hunters transporting their black bear hunting trophy consisting of the hide, hide with paws and claws attached, skull and/or meat in a fresh, frozen or salted condition back to the U.S. or through the U.S. en route to another part of Canada at the conclusion of their hunt. The black bear must accompany the hunter. This exemption does not apply to taxidermy mounts or black bears that are in any condition other than fresh, frozen or salted.

CITES export permits are not normally available near border crossings and, consequently, hunters are advised to obtain any required permits by contacting the ministry office closest to where they are hunting, during business hours, to make arrangements to obtain the appropriate documents. **Please allow up to 10 days to obtain a permit.**

CITES export permits are available free of charge.

In some countries, importation of black bears is restricted. Requirements for importation should be determined by the exporter.

More information on CITES is available at www.cites.ca.

Information for Resident Black Bear Hunters

Mandatory Reporting

Your resident bear hunting licence tag is valid in both the early pilot and fall seasons.

You are required to report your bear hunting activity and harvest for each season by completing and submitting the Mandatory Questionnaire for Resident Black Bear Hunters that you will receive by mail. **You must submit completed questionnaires even if you did not bear hunt.**

If you purchased your licence tag prior to June 16 you will receive an early season mandatory questionnaire by mail in July and must complete it and submit it by mail or online by August 1 of the year of the hunt. All hunters will receive a fall mandatory questionnaire by mail in November and must complete and submit it by December 15.

You may submit your completed questionnaires by mail to the Ministry of Natural Resources, 1350 High Falls Road, Bracebridge, ON P1L 1W9, or use the easy and quick online option at ontario.ca/harvestreporting to complete the questionnaires.

Second Game Seals

WMU-specific **second game seals for black bears** may be available to resident bear hunters in WMUs where bear population levels permit. The second game seal allows a resident hunter to harvest a second black bear. A black bear licence tag is required before a second game seal can be purchased. A second game seal can be used before the seal received with the licence tag is filled. These seals are available from participating ServiceOntario centres. You can contact a participating ServiceOntario centre or visit ontario.ca/outdoorscard in late **April** of the year of the hunt for information on WMUs where second game seals are available for the early pilot season and in **August** for information on other WMUs where second game seals are available. **It is illegal to hunt in a WMU not specified on the game seal when hunting black bears under a second game seal.**

Submitting Teeth From Your Harvested Black Bear

To submit the teeth from your harvested bear(s), in return for an Ontario Bear Hunter Crest and information about the age of your bear(s), you can either:

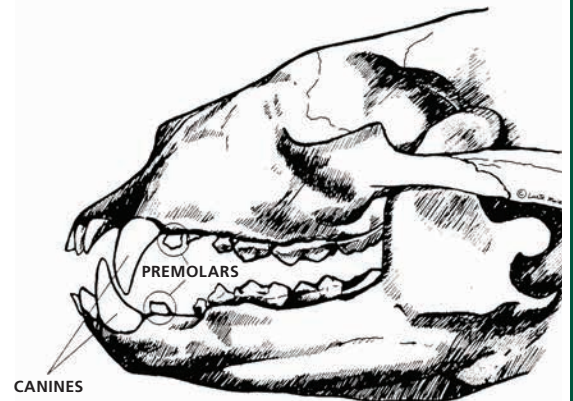
- (1) retain the teeth until you receive your mandatory questionnaire by mail in November and submit the teeth along with your completed questionnaire by mail, or;
- (2) immediately mail the teeth to the Ministry of Natural Resources, Wildlife Surveys Officer, 1350 High Falls Road, Bracebridge, ON P1L 1W9. You will still be mailed a mandatory questionnaire in November, and are required to complete and submit it. When mailing your teeth also include:
 - your name
 - your address
 - your Outdoors Card Number
 - the date the bear was shot
 - the sex of the bear, and
 - the Wildlife Management Unit (WMU) where the bear was shot.

Black Bear Hunters We Need Your Help

Successful black bear hunters can assist the Ministry of Natural Resources in determining the age structure of local bear populations by submitting for analysis **two premolar teeth** from each bear harvested. This information provides data necessary for the sustainable management of the species.

In return for your support of wildlife management efforts, an **Ontario Bear Hunter Crest** and information about the age of your bear(s) will be mailed to your home address, usually within six months. Please contact the ministry office in the area in which you will be hunting, or your bear operator, for more information.

Premolar teeth should be extracted shortly after the animal has been killed while the jaw is still pliable. The first premolar is a small, single-rooted peg-like tooth located just behind the canines. To remove the tooth, push the blade of a knife down along all sides of the tooth between it and the gum. Gently loosen the tooth by rocking it back and forth using the canine for leverage, then carefully remove the tooth using pliers. Care should be taken when extracting the tooth to ensure that the root is not broken.



Information for Non-resident Black Bear Hunters

Requirement for a Licence Validation Certificate

A non-resident who wishes to hunt a black bear in Ontario must have a **Non-Resident Black Bear Hunting Licence Validation Certificate (white copy)** to validate their non-resident black bear hunting licence. This certificate can be obtained from a bear operator (operator of a tourist establishment, guide or air carrier) licensed in Ontario to provide black bear hunting services to non-residents.

The following non-residents are not required to use a licensed bear operator:

- A non-resident hunting with an immediate relative who is an Ontario resident licensed to hunt a black bear in a Wildlife Management Unit that has an open season for non-residents. An immediate relative is a person's grandparent, parent, spouse, child, sibling or grandchild.
- A non-resident who is the owner of property in a WMU that has an open black bear season for non-residents.

A non-resident who qualifies under either of these two exceptions **MUST** contact a ministry office in the area of the hunt to apply for the validation certificate. A non-resident black bear hunting licence is not valid unless a validation certificate accompanies it. Where a property is owned by more than one person or by a corporation, only one validation certificate will be issued. The non-resident landowner may hunt only in the WMU where the property is located. See also Licence Information, page 14.

A non-resident hunter using the bear hunting services of an operator licensed to provide black bear hunting services

must hunt only in the areas designated on the Non-Resident Black Bear Hunting Licence Validation Certificate received from the operator. These areas can include Crown or private land located within a Bear Management Area (BMA) and private land located within a WMU designated on the operator's licence. The operator's licence does not permit the operator to provide bear hunting services on private land located within a BMA licensed to another operator. The operator must have the landowner's permission in order to provide bear hunting services to clients on private land.

Submitting Teeth From Your Harvested Black Bear

To receive an Ontario Bear Hunter Crest and information about the age of your harvested bear, submit its teeth to the issuer of your validation certificate along with your hunter mandatory report:

- (1) if you are hunting with a licenced bear operator, the operator will submit the teeth to the ministry on your behalf;
- (2) if you are a non-resident who is the owner of property or a non-resident hunting with an Ontario immediate relative, take the teeth to the ministry office that issued your validation certificate.

Mandatory Reporting

Non-resident hunters are required to report their black bear hunting activity and harvest by November 30 of the year of the hunt. To report, the hunter must complete, sign and date the hunter mandatory report on the pink copy of the Non-Resident Black Bear Hunting Licence Validation Certificate held by the issuer of the certificate (operator licensed to provide bear hunting services or ministry office). It is the responsibility of the issuer to return the hunter's completed mandatory report to the ministry.

2014 Black Bear Seasons			
Rifles, Shotguns, Bows and Muzzle-loading guns			
WMU(s)	Resident – Open Season	*Non-resident – Open Season	Conditions (Restrictions Only)
13, 14, 29, 30, 36, 39, 41, 42	May 1 to Jun. 15	No Season	No harvesting of cubs and female bears accompanied by a cub.
1A, 1C, 1D, 2, 3, 4, 5, 6, 7B, 8, 9A, 9B, 10, 11A, 11B, 12A, 12B, 13, 14, 15A, 15B, 16A, 16B, 16C, 17, 18A, 18B, 19, 21A, 21B, 22, 23, 24, 25, 26, 27, 28, 29, 30, 31, 32, 33, 34**, 35, 36, 37, 38, 39, 40, 41, 42, 43, 44, 45	Aug. 15 to Oct. 31	Aug. 15 to Oct. 31	** No hunting of black bear in Lake Superior Provincial Park portion of WMU 34.
7A	Aug. 15 to Oct. 31	Aug. 15 to Oct. 31	Bows and muzzle-loading guns only
46, 47, 49, 50, 53A, 53B, 64, 66, 67, 69A, 69B, 71, 72, 73, 74, 75, 76, 83, the geographic townships of Keppel and Sarawak in 82A and the geographic township of Amabel in 84	Sept. 2 to Nov. 30	Sept. 2 to Nov. 30	
48, 54, 55A, 55B, 56, 57, 58, 59, 60, 61, 62, 63, 68	Sept. 1 to Nov. 30	Sept. 1 to Nov. 30	

* A Non-Resident Black Bear Hunting Licence Validation Certificate is required for non-residents hunting black bears.

NEW – Black Bear Pilot Resident Seasons

The ministry has introduced a two-year Bear Pilot Project for 2014 and 2015. The pilot includes an early, open black bear hunting season for residents in Wildlife Management Units (WMUs) 13, 14, 29, 30, 36, 39, 41 and 42 from May 1 to June 15. For more information on the early seasons see table on page 77.

The annual resident bear hunting licence tag is valid in both the early and fall seasons. A resident hunter is permitted to harvest one bear per year during either the early or fall open seasons, unless a second bear game seal is purchased in a WMU where second game seals are available. You can contact a participating ServiceOntario centre or visit ontario.ca/hunting for information on WMUs where second game seals are available.

The harvest of bear cubs and female bears accompanied by a cub is prohibited during the early season. Hunters are reminded that they must always be sure of the sex and age of an animal before deciding if it is legal to shoot. Information on identifying females with cubs is available at ontario.ca/hunting.

Resident bear hunters that purchase a hunting licence tag prior to June 16 are required to report their bear hunting activity and harvest after the end of the season by August 1 by completing and submitting by mail or online the mandatory questionnaire that they receive in the mail. All residents that purchase a licence tag will receive in the mail a separate mandatory questionnaire to report their fall hunting activity and harvest that can be completed by mail or online. For more information on mandatory reporting see page 76.

All other provisions for hunting black bears in the province of Ontario apply to the early open season.

CHOOSE ONTARIO WOOD.

On the hunt for a wood product?
Set your sights on Ontario Wood.
Locally grown and sustainably
harvested. Whatever the season,
support Ontario's forest industry.
"Look for the leaf" and choose
Ontario Wood.



ontario.ca/wood

